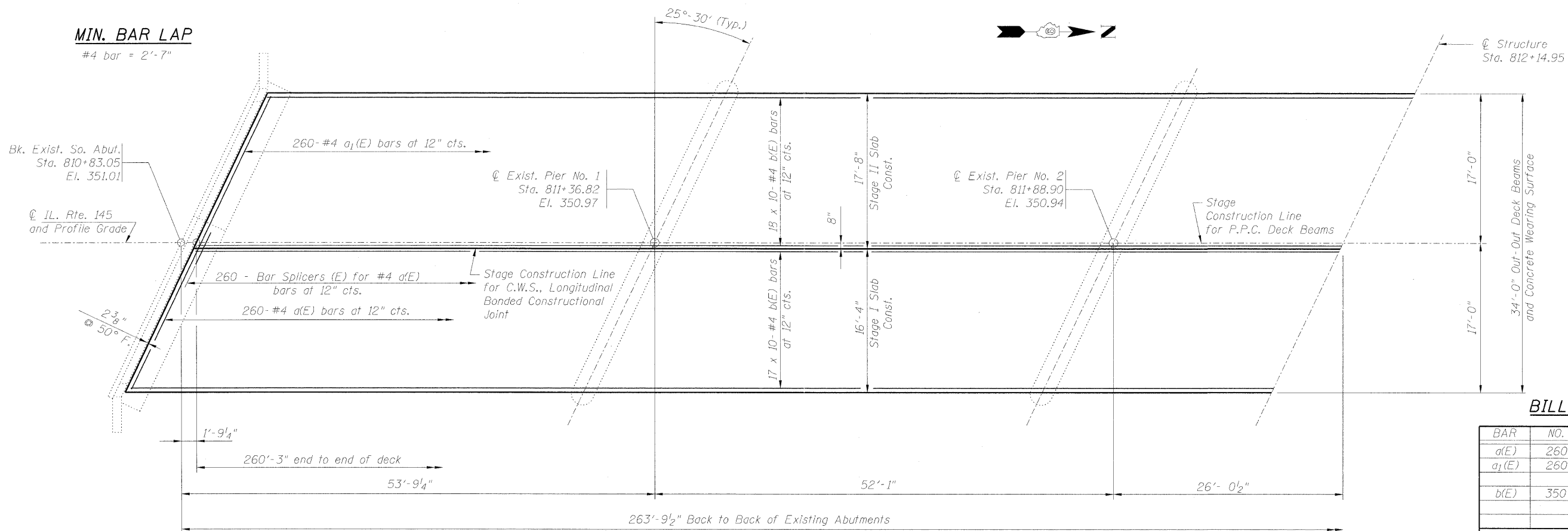


DECK CROSS SECTION
 Looking North

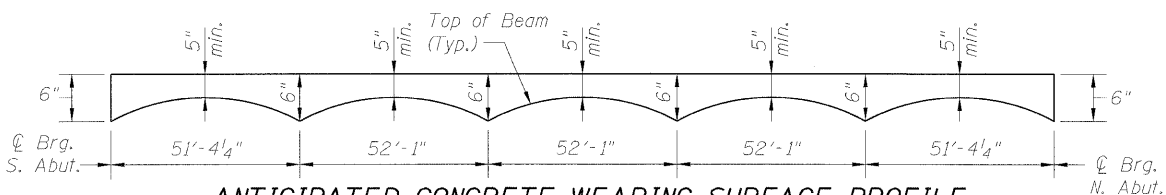
MIN. BAR LAP
 #4 bar = 2'-7"



PLAN

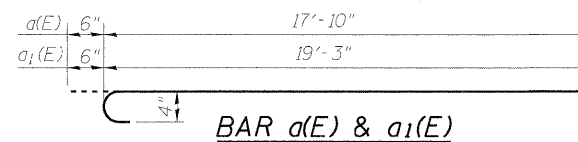
BILL OF MATERIAL

BAR	NO.	SIZE	LENGTH	SHAPE	
a(E)	260	#4	18'-4"	C	
a ₁ (E)	260	#4	19'-9"	C	
b(E)	350	#4	28'-4"	—	
Reinforcement Bars, Epoxy Coated				Pound	13,240
Concrete Wearing Surface, 5"				Sq. Yd.	983
Bridge Deck Grooving				Sq. Yd.	1,143
Bar Splicers				Each	260
Protective Coat				Sq. Yd.	1,221
Precast Prestressed Concrete Deck Beams (21" Depth)				Sq. Ft.	8836



ANTICIPATED CONCRETE WEARING SURFACE PROFILE

(For Information Only)



BAR a(E) & a₁(E)

FILE NAME = 0760025_78164-007-Superplan-xsscdgn

USER NAME = cax01283

DESIGNED - BWC

REVISED -

CHECKED -

REVISI -

REVISI -

PLOT SCALE =

DRAWN - BWC

REVISED -

PLOT DATE = 07/01/2011

CHECKED - MNM

REVISED -

STATE OF ILLINOIS
DEPARTMENT OF TRANSPORTATION

SUPERSTRUCTURE
STRUCTURE NO. 076-0025

SHEET NO. 7 OF 22 SHEETS

F.A.P. RTE. 132 SECTION 103BR-1 COUNTY POPE TOTAL SHEETS 38 SHEET NO. 23

CONTRACT NO. 78164

ILLINOIS FED. AID PROJECT