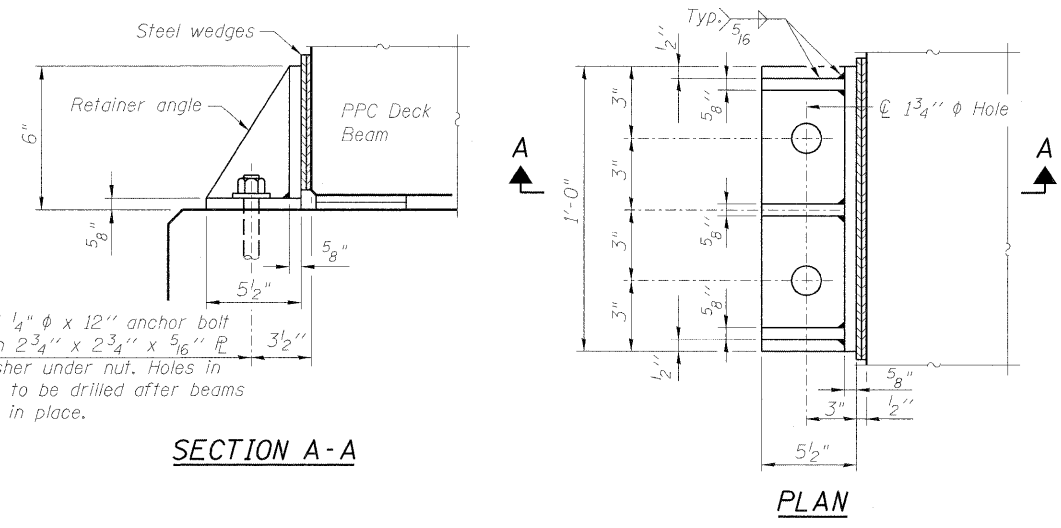
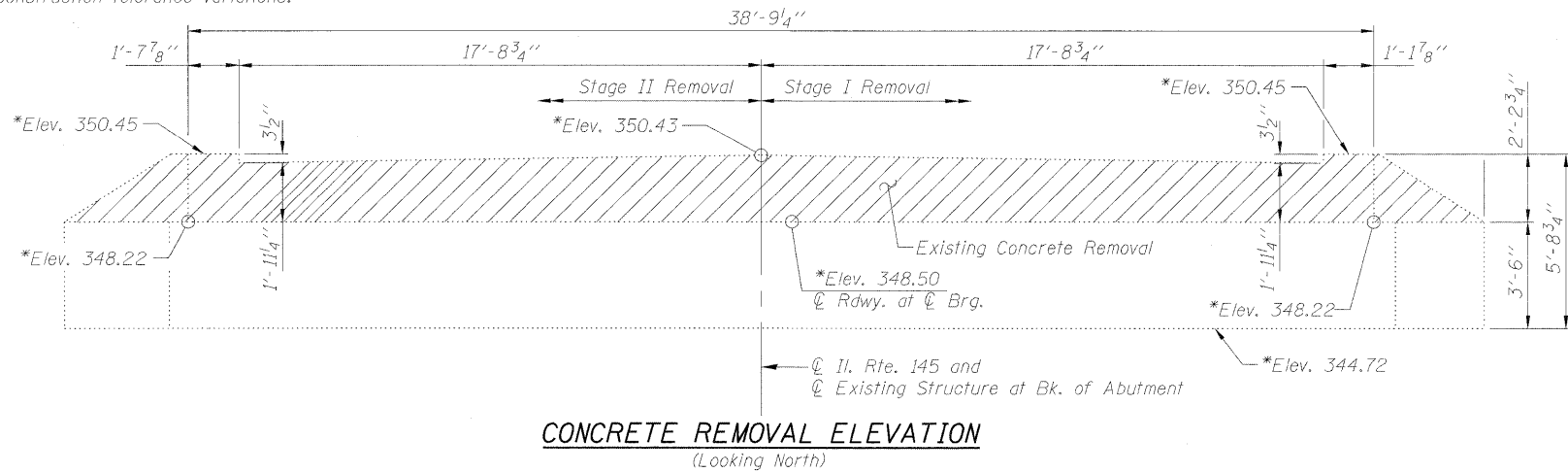


* Elevations given are from existing plans and have been adjusted by deducting 0.41 ft. The comparison data is based on a survey of the existing bearing seats, and is subject to normal construction tolerance variations.



① 1 1/4" φ x 12" anchor bolt with 2 3/4" x 2 3/4" x 5/16" R 3/2" washer under nut. Holes in cap to be drilled after beams are in place.

SECTION A-A

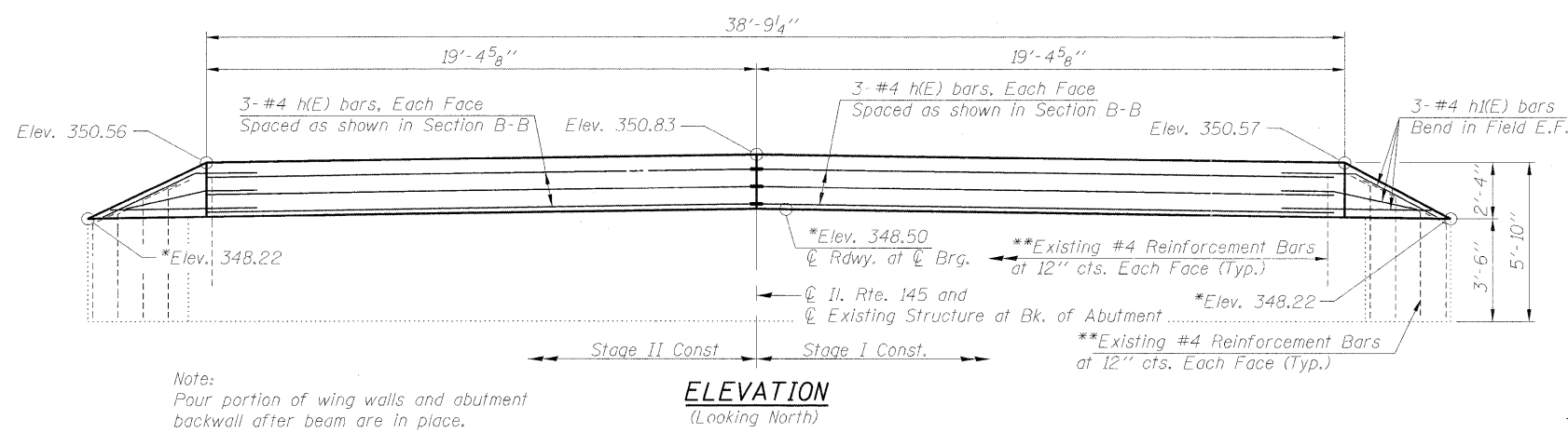
PLAN

Notes:
 Cost of retainer and accessories are included with Precast Prestressed Concrete Deck Beams. Equivalent rolled angle with stiffeners will be allowed in lieu of welded plates. The side retainers shall be galvanized after shop fabrication according to AASHTO M 111 and ASTM 385. Anchor bolts and plate washers shall be galvanized according to AASHTO M 232. After the notch or concrete overlay are poured and cured, the steel wedges shall be removed.

Notes:
 ** Existing reinforcement shall be cleaned and incorporated into the new construction. Cost included with Concrete Removal. Bars damaged or not salvaged shall be replaced with either drilled and epoxy grouted bars or IDOT approved mechanical bar splicer as directed by the Engineer. No additional compensation will be allowed for either method.

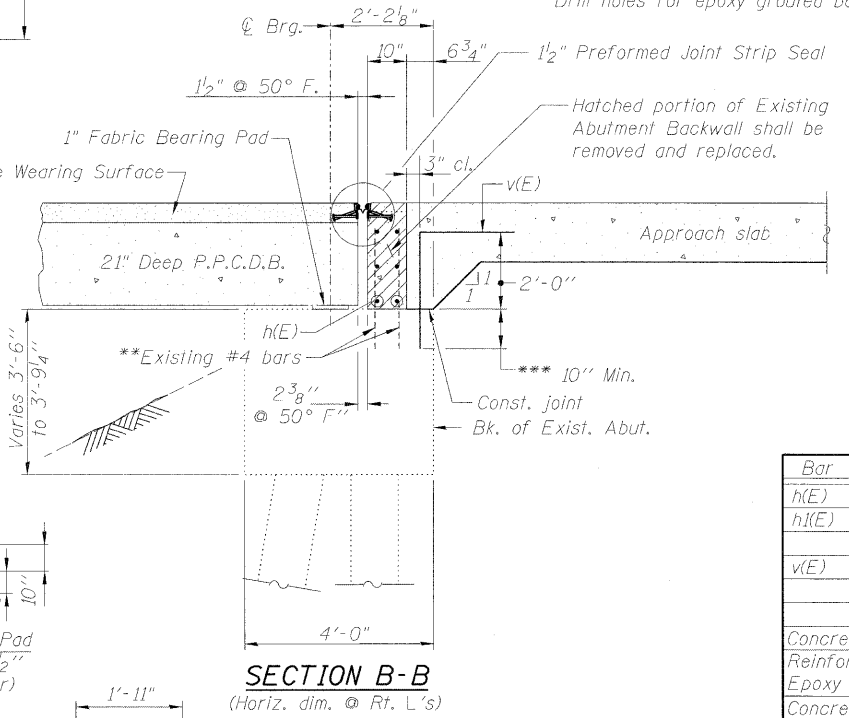
*** Bars epoxy grouted shall have an embedment sufficient to obtain 1.25 x yield strength of the reinforcing bar.

Drill holes for epoxy grouted bars to miss existing reinforcement.



Note:
 Pour portion of wing walls and abutment backwall after beam are in place.

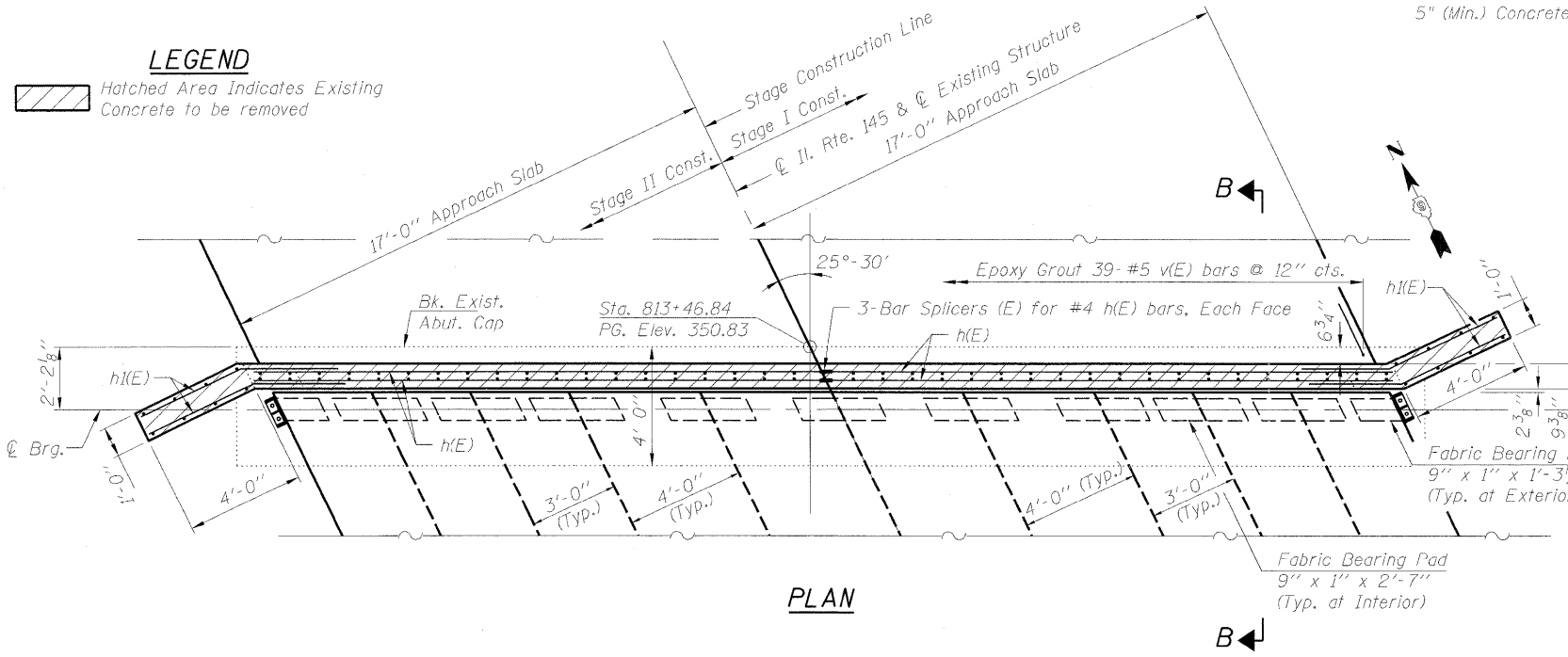
ELEVATION (Looking North)



SECTION B-B (Horiz. dim. @ Rt. L's)

BAR v(E)

LEGEND
 Hatched Area Indicates Existing Concrete to be removed



PLAN

NORTH ABUTMENT BILL OF MATERIAL

Bar	No.	Size	Length	Shape
h(E)	12	#4	19'-2"	—
h(E)	12	#4	7'-0"	—
v(E)	39	#5	4'-9"	└
Concrete Structures		Cu. Yd.		3.1
Reinforcement Bars, Epoxy Coated		Pound		400
Concrete Removal		Cu. Yd.		2.7
Bar Splicers		Each		6
Asbestos Bearing Pad Removal		Each		22

HANSON
 PROFESSIONAL DESIGN FIRM LICENSE #184-001084
 © Copyright Hanson Professional Services Inc. 2011

FILE NAME = 0760025_78164-019-NorthAbut.dgn

USER NAME = cox01293
 PLOT SCALE =
 PLOT DATE = 07/01/2011

DESIGNED - BWC
 CHECKED - BWC
 DRAWN - BWC
 CHECKED - MNM

REVISED -
 REVISED -
 REVISED -
 REVISED -

STATE OF ILLINOIS
 DEPARTMENT OF TRANSPORTATION

NORTH ABUTMENT
 STRUCTURE NO. 076-0025

SHEET NO. 19 OF 22 SHEETS

F.A.P. RTE.	SECTION	COUNTY	TOTAL SHEETS	SHEET NO.
132	103BR-1	POPE	38	35
CONTRACT NO. 78164				

ILLINOIS FED. AID PROJECT