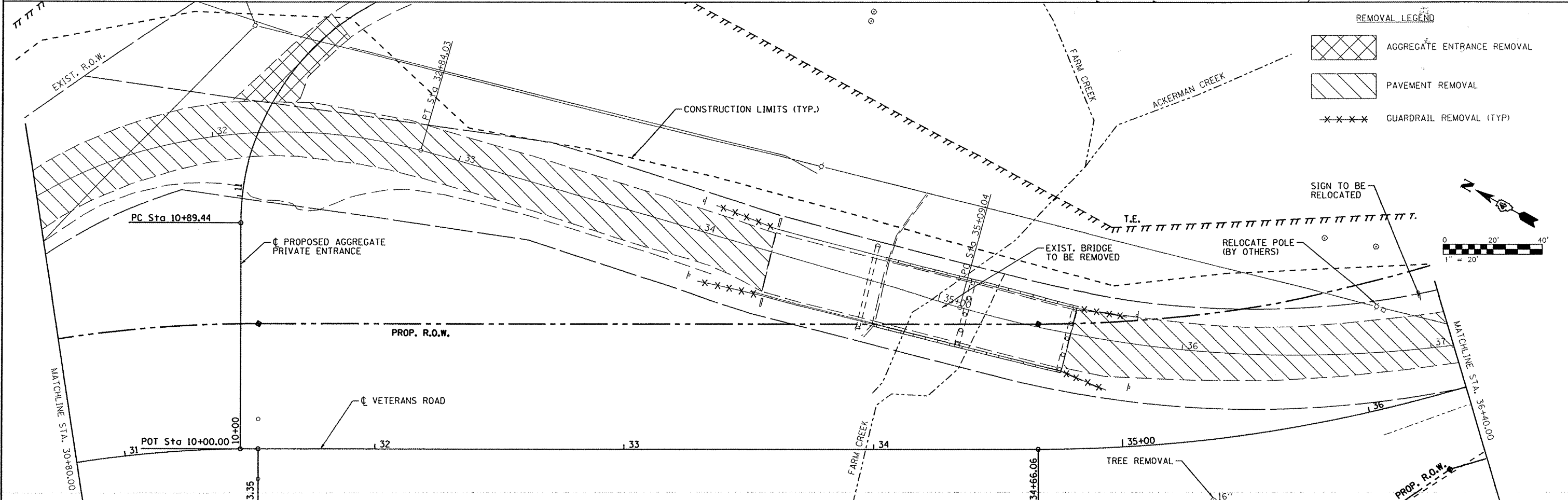
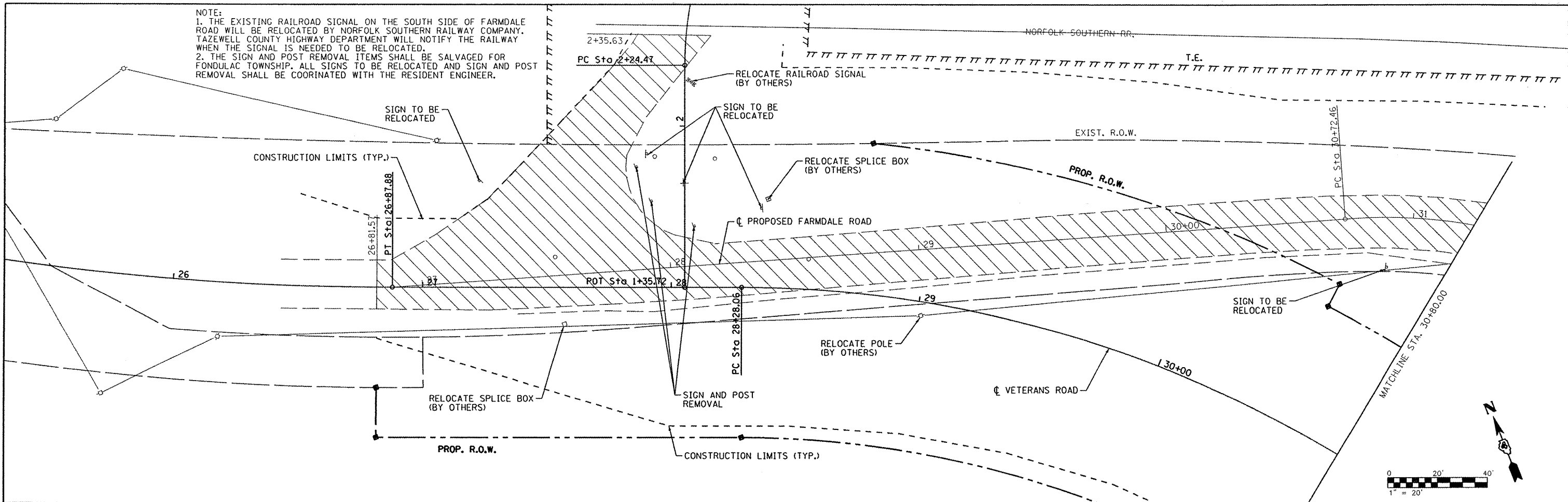


NOTE:
 1. THE EXISTING RAILROAD SIGNAL ON THE SOUTH SIDE OF FARMDALE ROAD WILL BE RELOCATED BY NORFOLK SOUTHERN RAILWAY COMPANY. TAZEWELL COUNTY HIGHWAY DEPARTMENT WILL NOTIFY THE RAILWAY WHEN THE SIGNAL IS NEEDED TO BE RELOCATED.
 2. THE SIGN AND POST REMOVAL ITEMS SHALL BE SALVAGED FOR FONDULAC TOWNSHIP. ALL SIGNS TO BE RELOCATED AND SIGN AND POST REMOVAL SHALL BE COORINATED WITH THE RESIDENT ENGINEER.



REMOVAL LEGEND

	AGGREGATE ENTRANCE REMOVAL
	PAVEMENT REMOVAL
	GUARDRAIL REMOVAL (TYP.)

MAURER & STUTZ, INC.
 ENGINEERS
 SURVEYORS

FILE NAME =	USER NAME = jdspliller	DESIGNED -	REVISED -
st:\237\2008\23708010\VeteransRdBridgePh	NCADD\CADD Sheets\0408010-sht-removal.dgn	DRAWN -	REVISED -
	PLOT SCALE = 40.0000 / IN.	CHECKED -	REVISED -
	PLOT DATE = 8/16/2011	DATE -	REVISED -

STATE OF ILLINOIS
DEPARTMENT OF TRANSPORTATION

VETERANS ROAD
REMOVAL PLAN

SCALE: SHEET NO. OF SHEETS STA. TO STA.

T.R.	SECTION	COUNTY	TOTAL SHEETS	SHEET NO.
156	06-07109-00-BR	TAZEWELL	53	10
CONTRACT NO. 89472				
FED. ROAD DIST. NO. ILLINOIS FED. AID PROJECT				