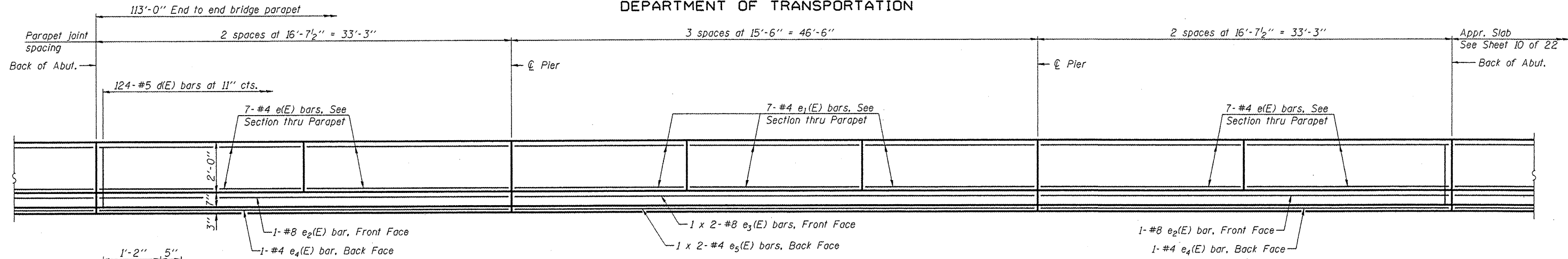
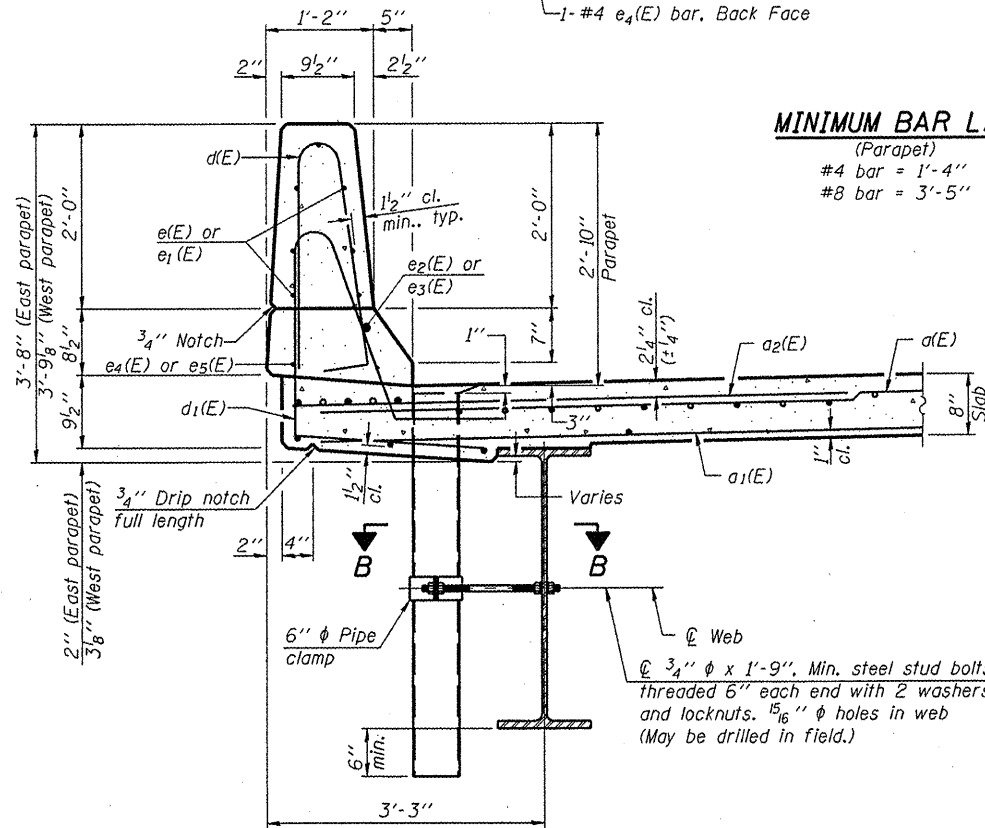


STATE OF ILLINOIS
DEPARTMENT OF TRANSPORTATION

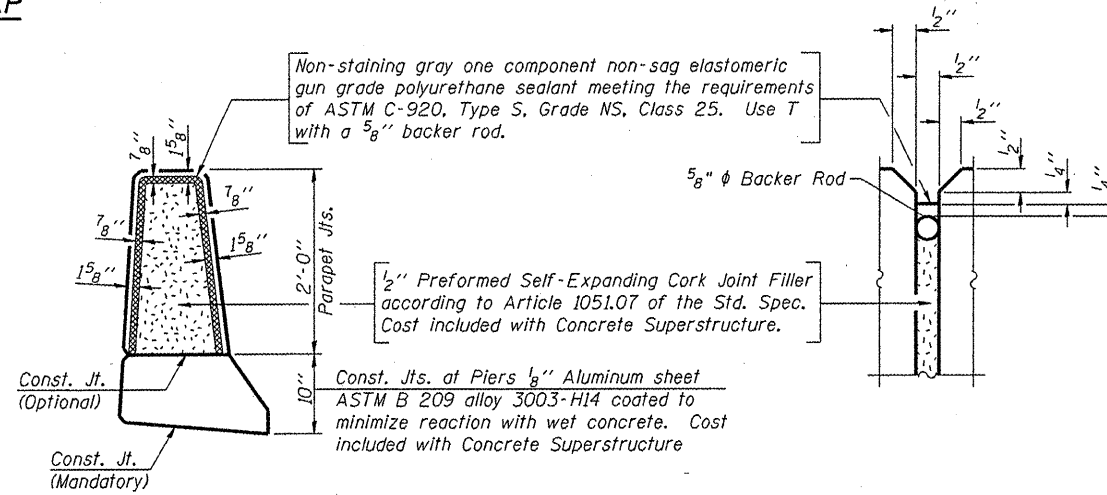


INSIDE ELEVATION OF PARAPET

MINIMUM BAR LAP
(Parapet)
#4 bar = 1'-4"
#8 bar = 3'-5"



SECTION THRU PARAPET



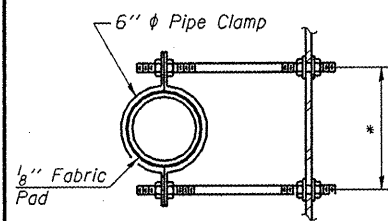
PARAPET JOINT DETAILS

Notes:
Fiberglass pipe shall conform to ASTM D 2996, with short-time rupture strength hoop tensile stress of 30,000 p.s.i. minimum.

SUPERSTRUCTURE BILL OF MATERIAL

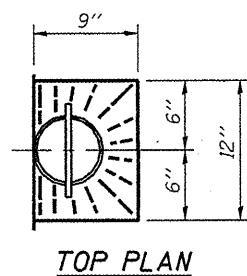
Bar	No.	Size	Length	Shape
a(E)	247	#5	42'-6"	—
a ₁ (E)	143	#5	41'-2"	—
a ₂ (E)	494	#6	6'-0"	—
a ₃ (E)	4	#5	43'-9"	—
b(E)	184	#5	29'-6"	—
b ₁ (E)	86	#6	23'-10"	—
b ₂ (E)	180	#5	23'-11"	—
d(E)	248	#5	5'-7"	┌
d ₁ (E)	248	#5	8'-0"	┌
e(E)	56	#4	16'-4"	—
e ₁ (E)	42	#4	15'-2"	—
e ₂ (E)	4	#8	32'-11"	—
e ₃ (E)	4	#8	24'-11"	—
e ₄ (E)	4	#4	32'-11"	—
e ₅ (E)	4	#4	23'-10"	—
m(E)	10	#6	44'-1"	—
m ₁ (E)	24	#6	9'-8"	—
m ₂ (E)	10	#6	7'-2"	—
m ₃ (E)	4	#6	3'-0"	—
s(E)	98	#5	6'-10"	└
s ₁ (E)	86	#4	8'-7"	└
v(E)	88	#5	3'-4"	┌
Reinforcement Bars, Epoxy Coated			Pound	42910
Concrete Superstructure			Cu. Yd.	172.7
Floor Drains			Each	7

Bars indicated thus 1 x 3-#5 etc. indicates 1 line of bars with 3 lengths per line.

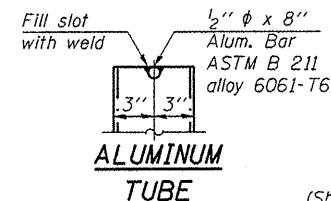
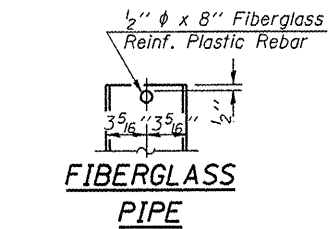


SECTION B-B
*Dimension as required by Pipe Clamp

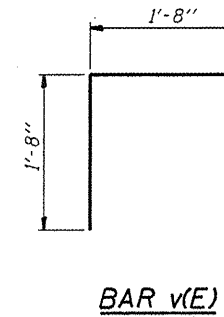
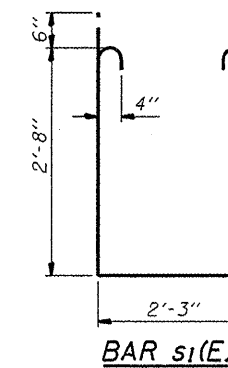
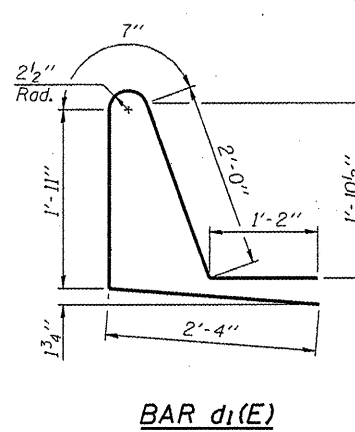
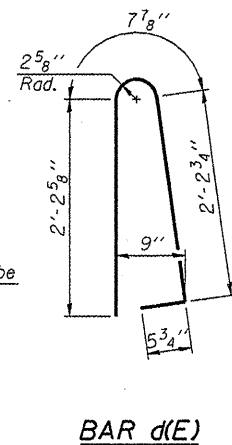
DESIGNED - JAE
CHECKED - BAS
DRAWN - SGM
CHECKED - BAS



TOP PLAN



TOP PLAN (Showing Aluminum Tube)



SUPERSTRUCTURE DETAILS STRUCTURE NO. 090-3244

SHEET NO. 8 22 SHEETS	T.R.	SECTION	COUNTY	TOTAL SHEETS	SHEET NO.
	156	06-07109-00-BR	TAZEWELL	53	28
FED. ROAD DIST. NO. ILLINOIS			FED. AID PROJECT		
			CONTRACT NO. 89472		

