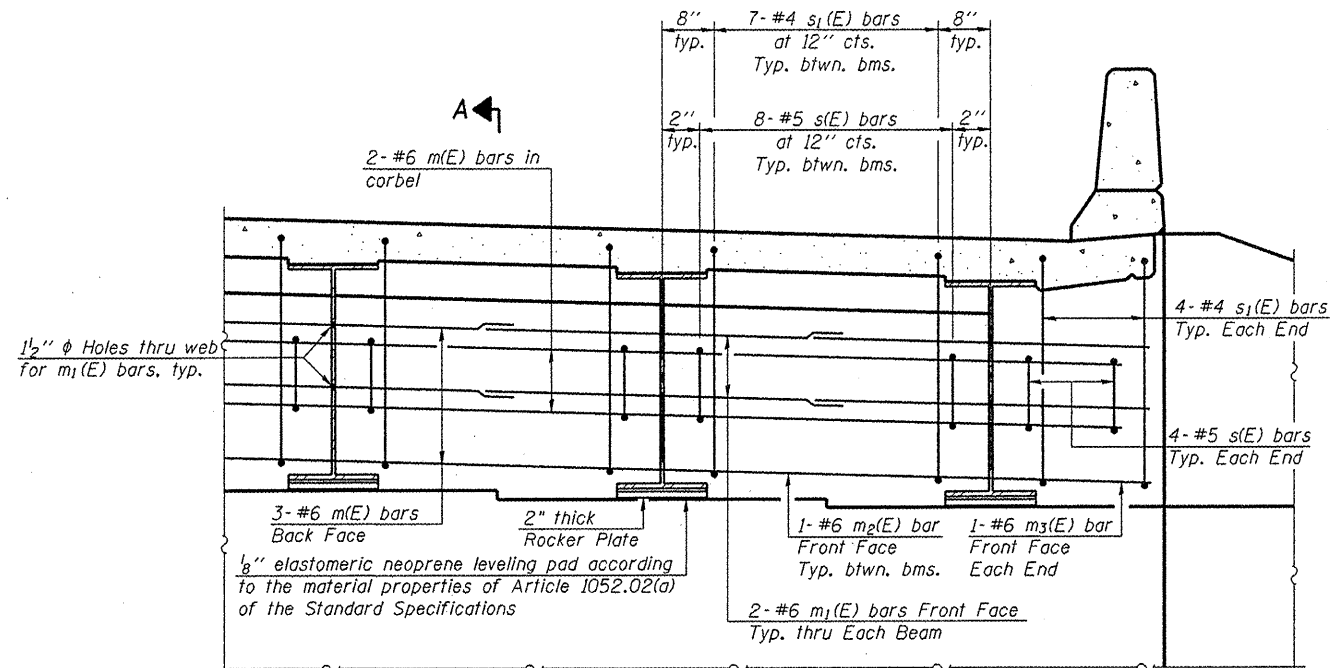


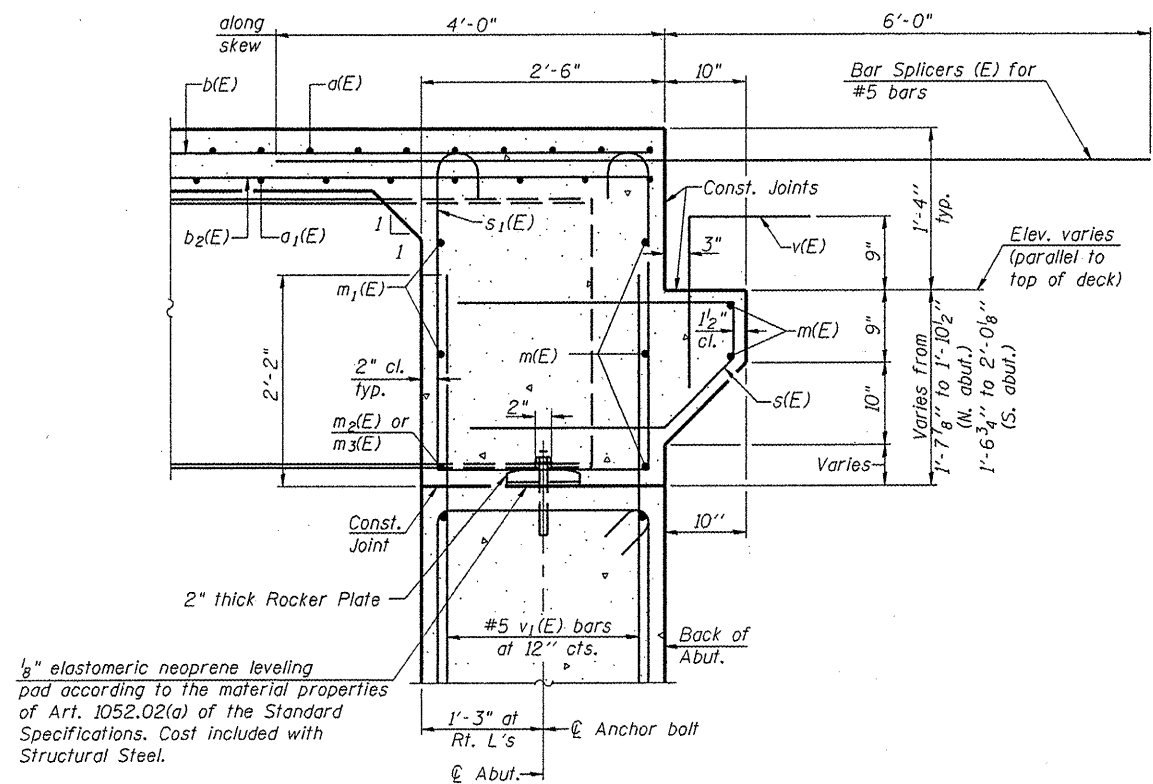
STATE OF ILLINOIS
DEPARTMENT OF TRANSPORTATION



DIAPHRAGM ELEVATION AT ABUTMENT

Notes:
Reinforcement bars in diaphragm are billed with superstructure on sheet 8 of 22.
Concrete in diaphragm is included with Concrete Superstructure on sheet 8 of 22.
For details of bars s(E) & s1(E) see sheet 8 of 22.
The s(E) and s1(E) bars shall be placed parallel to the beams. Spacing for these bars shall be at right angles to the beams.

MIN. BAR LAP
#6 bar = 2'-9"



SECTION A-A

Dimensions at right angles to abutment, except as shown.

**INTEGRAL ABUTMENT
DIAPHRAGM DETAILS
STRUCTURE NO. 090-3244**

DESIGNED - JAE
CHECKED - BAS
DRAWN - SGM
CHECKED - BAS



SHEET NO. 9	T.R.	SECTION	COUNTY	TOTAL SHEETS	SHEET NO.
	156	06-07109-00-BR	TAZEWELL	53	29
22 SHEETS	CONTRACT NO. 89472				
FED. ROAD DIST. NO. ILLINOIS FED. AID PROJECT					