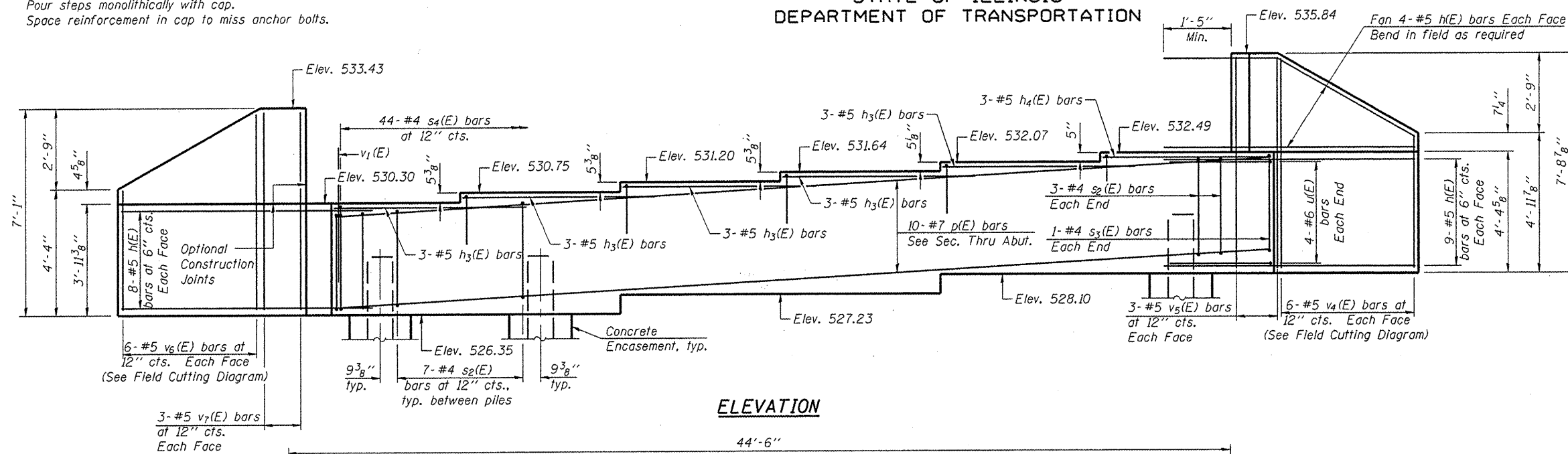
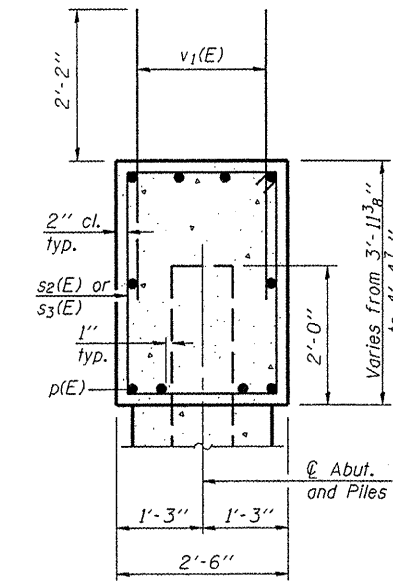


STATE OF ILLINOIS
DEPARTMENT OF TRANSPORTATION

Notes:
Pour steps monolithically with cap.
Space reinforcement in cap to miss anchor bolts.



ELEVATION

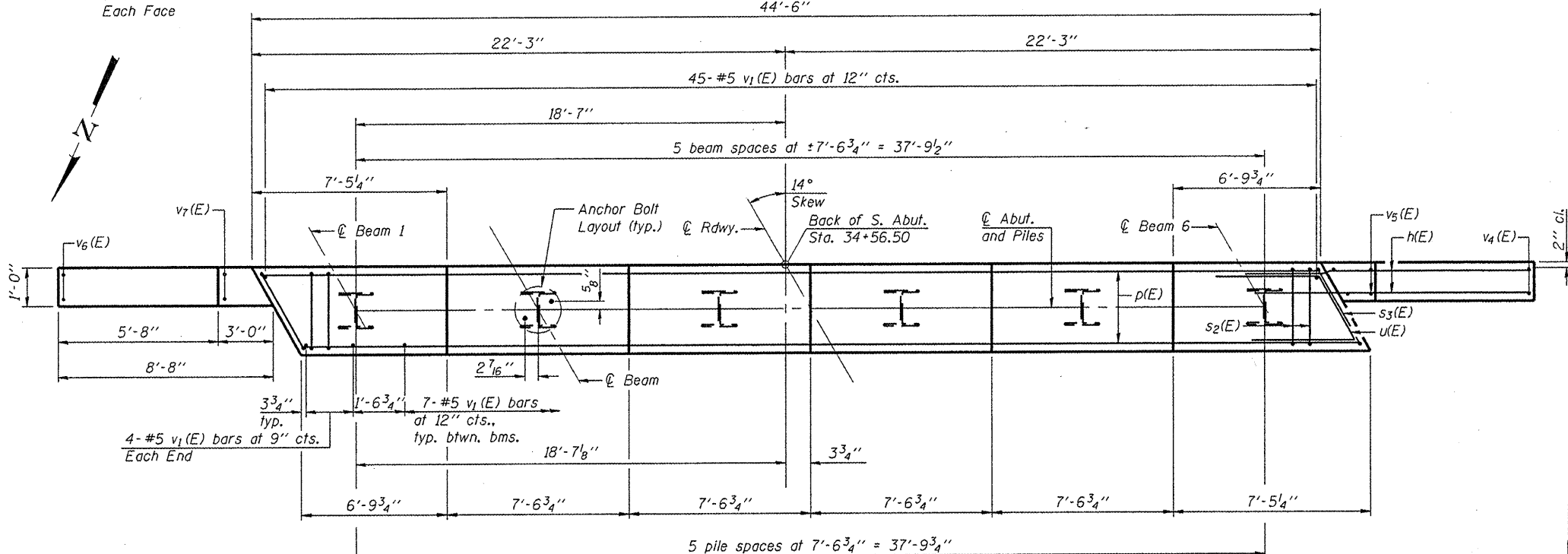


SEC. THRU ABUT.

BILL OF MATERIAL

Bar	No.	Size	Length	Shape
h(E)	50	#5	10'-7"	—
h3(E)	15	#5	9'-3"	—
h4(E)	3	#5	6'-6"	—
p(E)	10	#7	44'-1"	—
s2(E)	41	#4	11'-5"	□
s3(E)	2	#4	11'-7"	□
s4(E)	44	#4	5'-8"	□
u(E)	8	#6	7'-10"	∩
v1(E)	88	#5	4'-4"	—
v4(E)	6	#5	11'-10"	—
v5(E)	6	#5	7'-4"	—
v6(E)	6	#5	10'-10"	—
v7(E)	6	#5	6'-9"	—
Structure Excavation		Cu. Yd.	15	
Concrete Structures		Cu. Yd.	21.3	
Concrete Encasement		Cu. Yd.	2.1	
Reinforcement Bars, Epoxy Coated		Pound	2830	
Furnishing Steel Piles, HP12x53		Foot	265	
Driving Piles		Foot	265	
Test Pile, HP12x53		Each	1	
Anchor Bolts, 1"		Each	12	

For details of Bar Splicers, see sheet 18 of 22.
For details of piles and Concrete Encasement, see sheet 19 of 22.

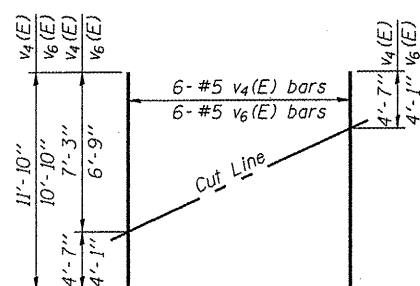


PLAN

PILE DATA

Type: HP12x53
Nominal Required Bearing: 292k
Factored Resistance Available: 146k
Est. Length: 53'
No. Production Piles: 5
No. Test Piles: 1

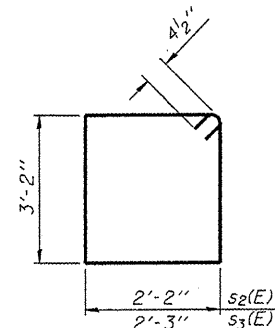
DESIGNED - JAE
CHECKED - BAS
DRAWN - SGM
CHECKED - BAS



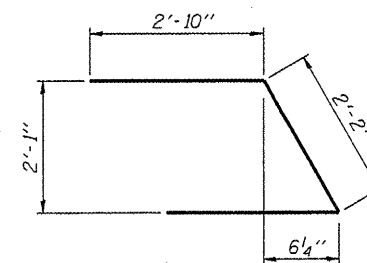
FIELD CUTTING DIAGRAM

Order v4(E) and v6(E) full length. Cut as shown and use remainder of bars in opposite face.

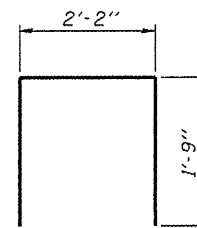
BARS s2(E) & s3(E)



BAR u(E)



BAR s4(E)



SOUTH ABUTMENT
STRUCTURE NO. 090-3244

SHEET NO. 15	T.R.	SECTION	COUNTY	TOTAL SHEETS	SHEET NO.
	156	06-07109-00-BR	TAZEWELL	53	35
22 SHEETS	CONTRACT NO. 89472				
FED. ROAD DIST. NO. - ILLINOIS FED. AID PROJECT					

