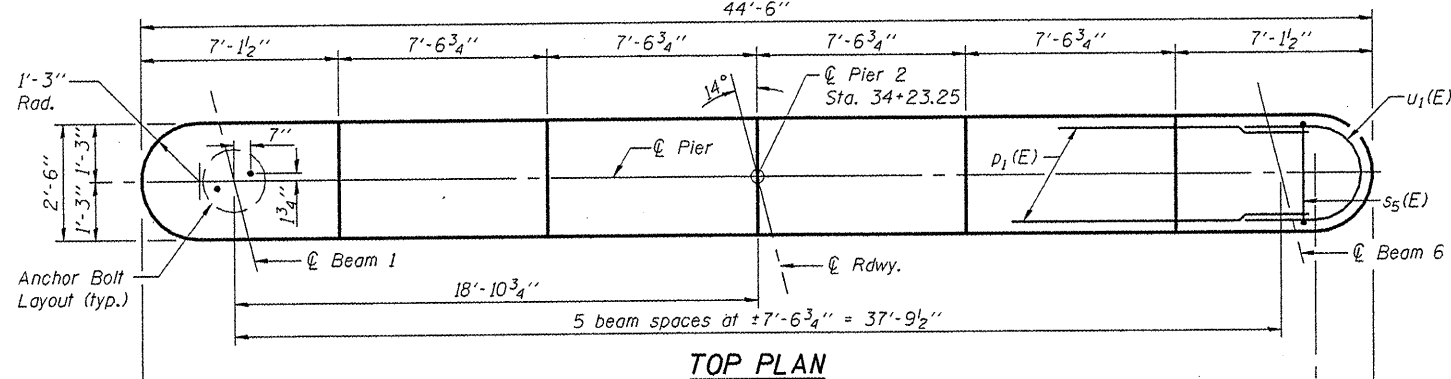


STATE OF ILLINOIS
DEPARTMENT OF TRANSPORTATION

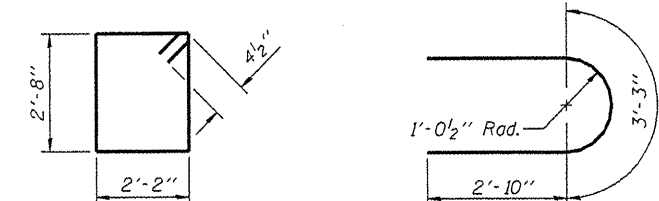
Notes:
Space reinforcement in cap to miss anchor bolts.
Pour steps monolithically with cap.
For details of piles, see sheet 19 of 22.
If a portion of the pier wall or concrete encasement is under water, reinforcement may be placed underwater into forms.
Concrete shall be tremied according to Article 503.08 of the Standard Specifications to an elevation of 1'-0" above the water line at the time of construction.

PILE DATA

Type: Steel HP12x53
Nominal Required Bearing: 314k
Factored Resistance Available: 152k
Est. Length: 61'
No. Production Piles: 7
No. Test Piles: 1

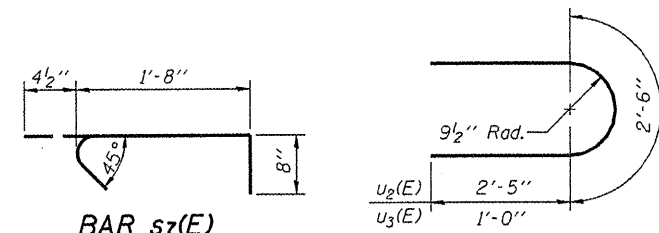


TOP PLAN



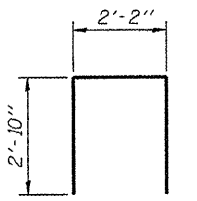
BAR s5(E)

BAR u1(E)

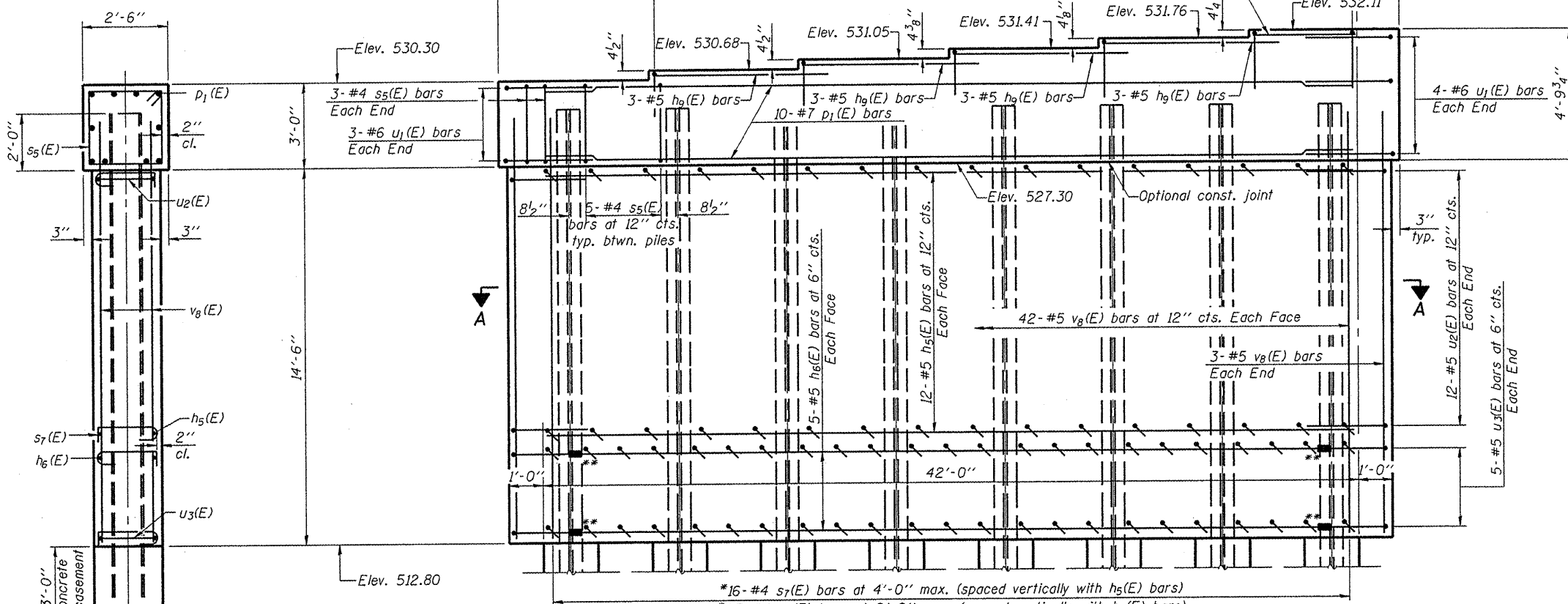


BAR s7(E)

BARS u2(E) & u3(E)



BAR s6(E)

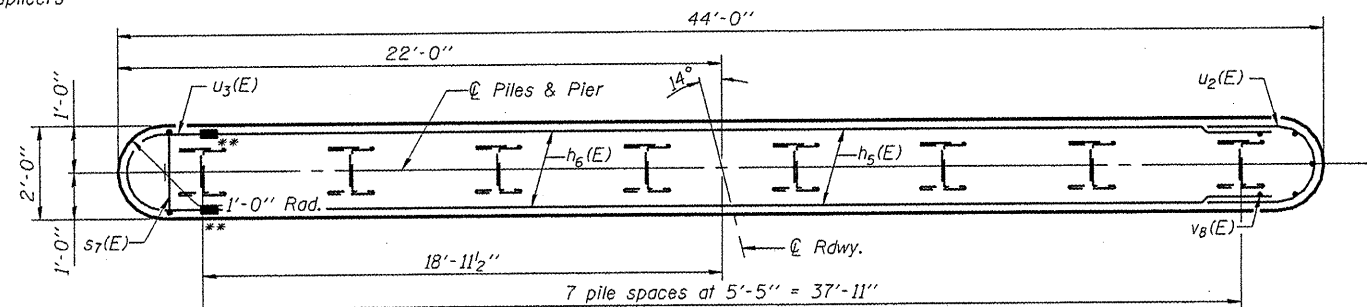


ELEVATION
(Looking South)

*s7(E) bars shall enclose both vertical and horizontal bars. Alternate the position of the 90 and 135 degree hooked ends both vertically and horizontally.

**Mechanical Splicers

END VIEW



SECTION A-A

BILL OF MATERIAL

Bar	No.	Size	Length	Shape
h5(E)	24	#5	42'-0"	—
h6(E)	10	#5	40'-0"	—
h9(E)	12	#5	9'-3"	—
h10(E)	3	#5	5'-8"	—
p1(E)	10	#7	42'-0"	—
s5(E)	41	#4	10'-5"	□
s6(E)	37	#4	7'-10"	□
s7(E)	307	#4	2'-9"	┌
u1(E)	7	#6	8'-11"	U
u2(E)	24	#5	7'-4"	U
u3(E)	10	#5	4'-6"	U
v8(E)	90	#5	16'-0"	—
Structure Excavation		Cu. Yd.	31	
Concrete Structures		Cu. Yd.	62.8	
Concrete Encasement		Cu. Yd.	2.8	
Reinforcement Bars, Epoxy Coated		Pound	5330	
Furnishing Steel Piles, HP12x53		Foot	427	
Driving Piles		Foot	427	
Test Pile, HP12x53		Each	1	
Anchor Bolts, 1"		Each	12	
Mechanical Splicers		Each	20	
Underwater Structure Excavation Protection Location 2		Each	1	

PIER 2
STRUCTURE NO. 090-3244

DESIGNED - JAE
CHECKED - BAS
DRAWN - SGM
CHECKED - BAS

SHEET NO. 17	T.R.	SECTION	COUNTY	TOTAL SHEETS	SHEET NO.
	156	06-07109-00-BR	TAZEWELL	53	37
22 SHEETS	CONTRACT NO. 89472				
FED. ROAD DIST. NO. - ILLINOIS FED. AID PROJECT					

