

RTE.	SECTION	COUNTY	TOTAL SHEETS	SHEET NO.
C.H. 14	94-00091-00-BR	HANCOCK	14	1

INDEX OF SHEETS

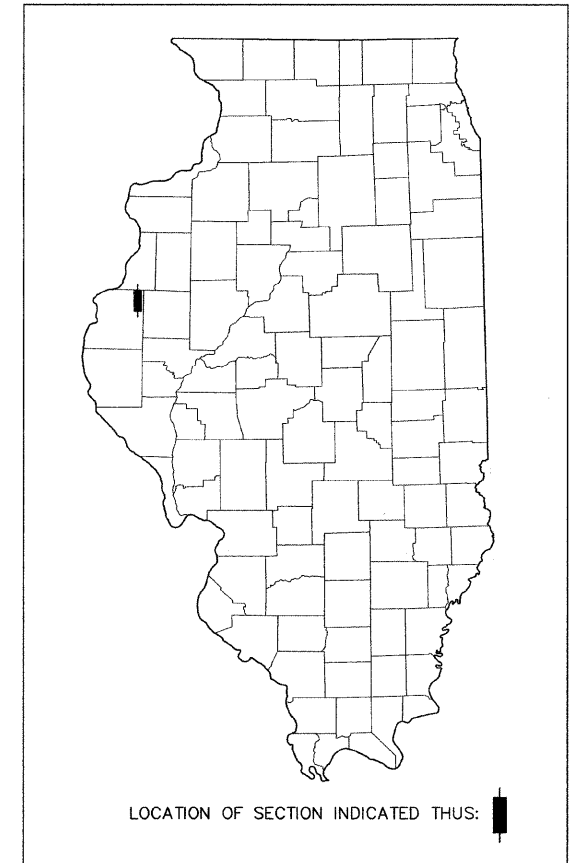
SHEET NO.	DESCRIPTION
1	COVER
2	SUMMARY OF QUANTITIES, TYPICAL SECTIONS GENERAL NOTES AND TRAFFIC CONTROL PLAN
3	PLAN AND PROFILE
4-7	CROSS SECTIONS
8	GENERAL PLAN AND ELEVATION
9-10	P.P.C. DECK BEAM SUPERSTRUCTURE
11	BEAM DETAILS
12	ABUTMENT DETAILS
13	METAL SHELL PILE DETAILS
14	STEEL RAILING, TYPE S-1 DETAILS

HIGHWAY STANDARDS

- 515001-03 -NAME PLATES FOR BRIDGES
- 701901-01 -TRAFFIC CONTROL DEVICES
- BLR 21-8 -TRAFFIC CONTROL DEVICES RURAL LOCAL HWYS.
- BLR 23-3 -TRAFFIC BARRIER TERMINAL, TYPE 1
- BLR 26-2 -STEEL PLATE BEAM GUARD RAIL (27.5" HT.)
- BLR 27-1 -TRAFFIC BARRIER TERMINAL, TYPE 5A

STATE OF ILLINOIS
DEPARTMENT OF TRANSPORTATION
DIVISION OF HIGHWAYS
BUREAU OF LOCAL ROADS / STREETS
PLANS FOR PROPOSED
SURFACE TRANSPORTATION/RURAL PROGRAM

HANCOCK COUNTY SECTION 94-00091-00-BR
COUNTY HIGHWAY 14 STRUCTURE NO. 034-3141
PROJECT NO. RS-0067(143) JOB NO. C-96-264-10

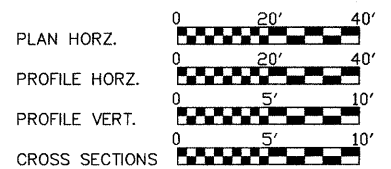
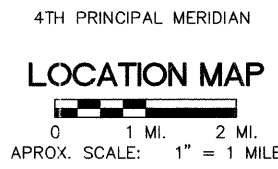
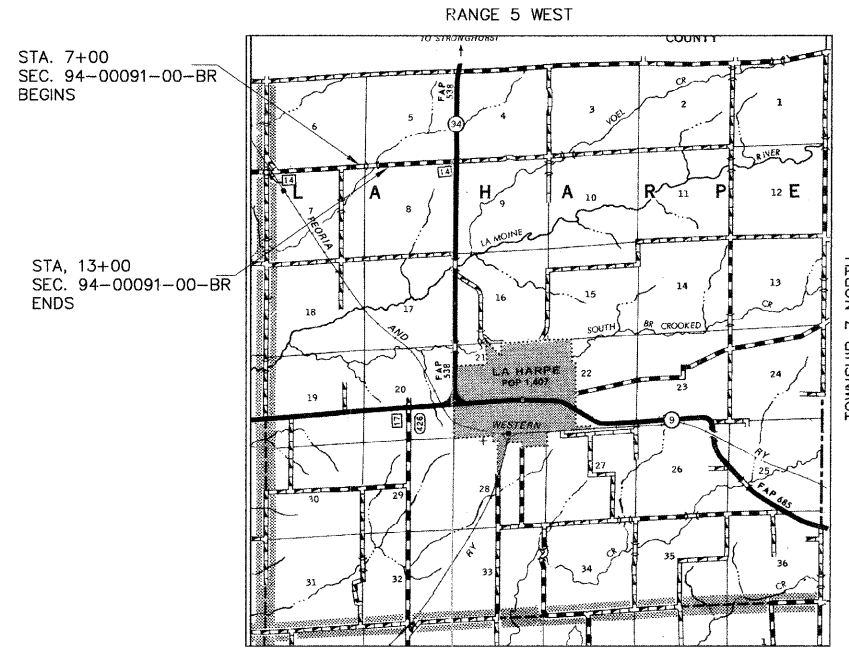


PROJECT DESCRIPTION

SEC. 94-00091-00-BR CONSIST OF THE CONSTRUCTION OF A 55.50' (B-B ABUT.) PRECAST PRESTRESSED CONCRETE DECK BEAM BRIDGE WITH THE NECESSARY BRIDGE APPROACH ADJUSTMENTS.

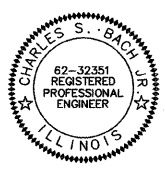
EXISTING STRUCTURE NO. 034-3140
 A 27' X 22' CONCRETE SLAB BRIDGE WITH CLOSED ABUTMENTS AND WINGWALLS.

PROPOSED STRUCTURE NO. 034-3141
 A SINGLE SPAN PRECAST PRESTRESSED CONCRETE DECK BEAM BRIDGE ON PILE BENT ABUTMENTS. 55'-6" B-B ABUTMENTS 30'-0" O-O DECK



DESIGN CLASSIFICATION: RURAL LOCAL ROAD
 DESIGN ADT (2011) = 300
 DESIGN SPEED = 40 MPH

GROSS LENGTH OF IMPROVEMENT = 600.00 FEET
STRUCTURE LENGTH = 55.50 FEET
NET LENGTH OF IMPROVEMENT = 600.00 FEET (0.114 MILES)



Charles S. Bach, Jr. (6/8/2011) DATE
 CHARLES S. BACH, JR.
 062-032351
 EXP. DATE 11/30/11
 THIS SEAL COVERS SHEETS: 1-7

APPROVED	<i>Elgin Berry</i> 6/9	20 11
	COUNTY ENGINEER	
PASSED	<i>August 15</i>	20 11
	<i>Terrence H. Fountain</i> M.A.S.	
	DISTRICT SIX ENGINEER OF LOCAL ROADS & STREETS	
PASSED	<i>August 15</i>	20 11
	<i>Ron Buchanan</i>	
	DISTRICT SIX ENGINEER OF CONSTRUCTION	
Releasing For Bid Based on Limited Review	<i>August 15</i>	20 11
	<i>Roger L. Driskell</i> M.A.S.	
	DEPUTY DIRECTOR OF HIGHWAYS, REGION FOUR ENGINEER	
	STATE OF ILLINOIS DEPARTMENT OF TRANSPORTATION	

JULIE
 JOINT UTILITY LOCATION INFORMATION FOR EXCAVATION
 1-800-892-0123

DALLAS RURAL WATER DIST.-----FERRIS, IL
 AMEREN ILLINOIS-----ST. LOUIS, MO.

CONTRACT NO. **93555**

PSBA
 POEPPING, STONE, BACH & ASSOCIATES, INC.
 ARCHITECTS ENGINEERS PLANNERS SURVEYORS
 100 SOUTH 54TH STREET
 QUINCY, ILLINOIS
 PH (217) 223-4605
 FAX (217) 223-1546
 DESIGN FIRM REGISTRATION NO. 184-000493

PRINTED BY THE AUTHORITY OF THE STATE OF ILLINOIS