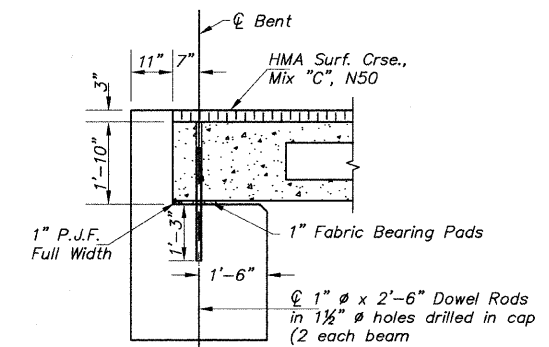
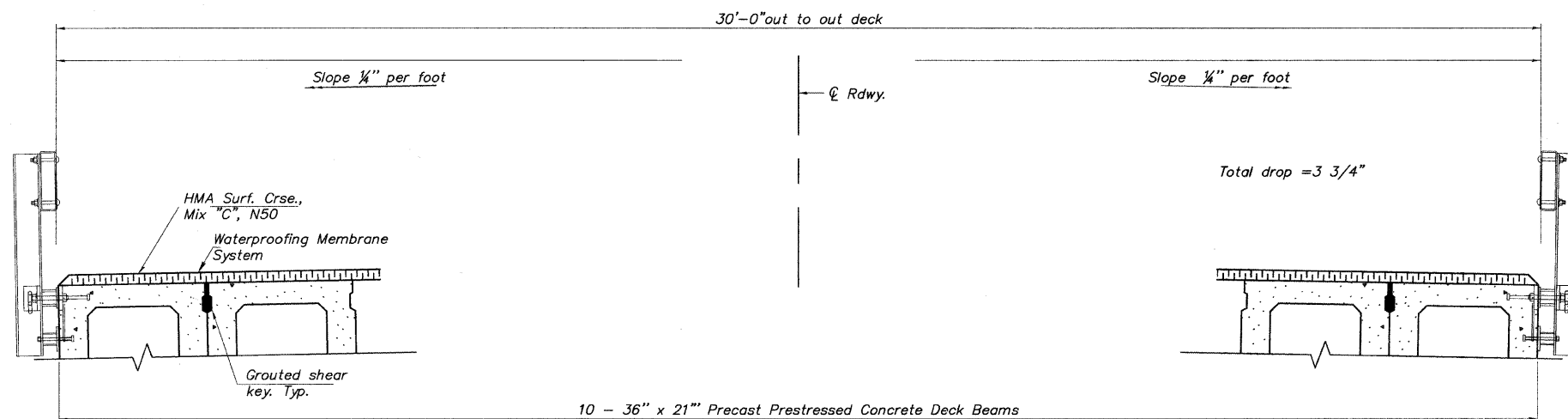


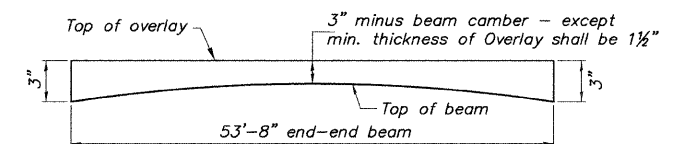
PLAN



SECTION A-A  
See sheet 4 of 7 for fabric bearing pad details.



CROSS SECTION  
(Looking East)



ANTICIPATED HMA WEARING SURFACE PROFILE  
(For information only)

BILL OF MATERIAL

ITEM	UNIT	QUANTITY
Waterproofing Membrane System	Sq. Yds.	179
HMA Surf. Crse., Mix "C", N50	Ton	23
*Portland Cement Mortar Fairing Crse.	As Necessary	

\*See Special Provisions

Notes:  
See sheet 3 of 7 for Superstructure Details and Bill of Material.  
Bars indicated thus 20 x 2-#4 etc. indicates 20 lines of bars with 2 lengths per line.  
After beams have been erected, holes shall be drilled into substructure and anchor dowels placed. Dowel holes shall be filled with non-shrink grout to top of beam and allowed to cure min. 24 hrs. prior to grouting the shear keys.

MINIMUM BAR LAP  
#4 bar = 2'-7"

SUPERSTRUCTURE DETAILS  
HANCOCK COUNTY  
SECTION 94-00091-00-BR  
CH #14 OVER SPRING CREEK

SHEET NO. 2 OF 7 SHEETS	ROUTE NO.	SECTION	COUNTY	TOTAL SHEETS	SHEET NO.
	CH #14	94-00091-00-BR	HANCOCK	14	9
S.N. 034-3141			CONTRACT NO. 93555		
FED. ROAD DIST. NO. 7   ILLINOIS FED. AID PROJ.					