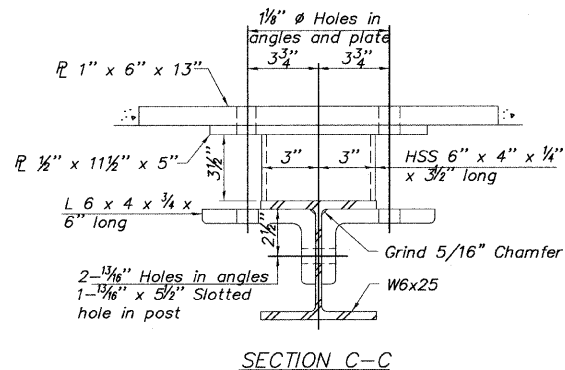
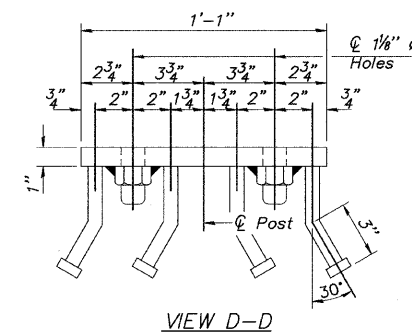
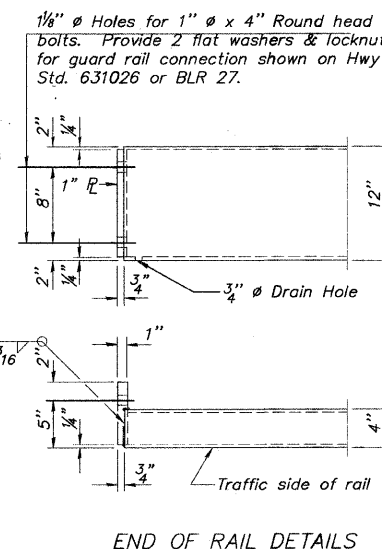
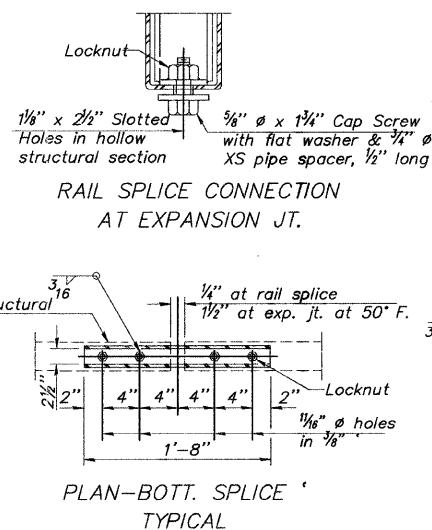
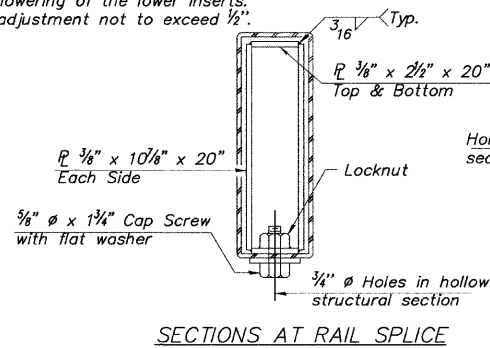


Notes:  
 All field drilled holes shall be coated with an approved zinc rich paint before erection.  
 For multi-span bridges, sufficient 1/4" x 6" x 1'-2" galvanized steel shims shall be provided to align rail between adjacent spans. Cost included with Steel Railing, Type S-1.  
 All steel rail elements shall be galvanized according to Article 509.05 of the Standard Specifications.  
 \*\*\* The studs of the anchor devices shall be placed below the top reinforcement bars and the outermost longitudinal reinforcement bar shall be placed directly above the studs of the rail post anchor device.



\*\* Whenever the lower insert assemblies interfere with strand locations, the #3 bars shall be cut and adjusted in order to allow raising or lowering of the lower inserts. Maximum adjustment not to exceed 1/2".



**BILL OF MATERIAL**

Item	Unit	Quantity
Steel Railing, Type S-1	Foot	108

(10'-9" Maximum Post Spacing)

**STEEL RAILING, TYPE S-1 DETAIL  
 HANCOCK COUNTY  
 SECTION 94-00091-00-BR  
 CH #14 OVER SPRING CREEK**

SHEET NO. 7 OF 7 SHEETS	ROUTE NO.	SECTION	COUNTY	TOTAL SHEETS	SHEET NO.
	CH #14	94-00091-00-BR	HANCOCK	14	14
S.N. 034-3141		CONTRACT NO.		93555	
FED. ROAD DIST. NO. 7		ILLINOIS		FED. AID PROJ.	