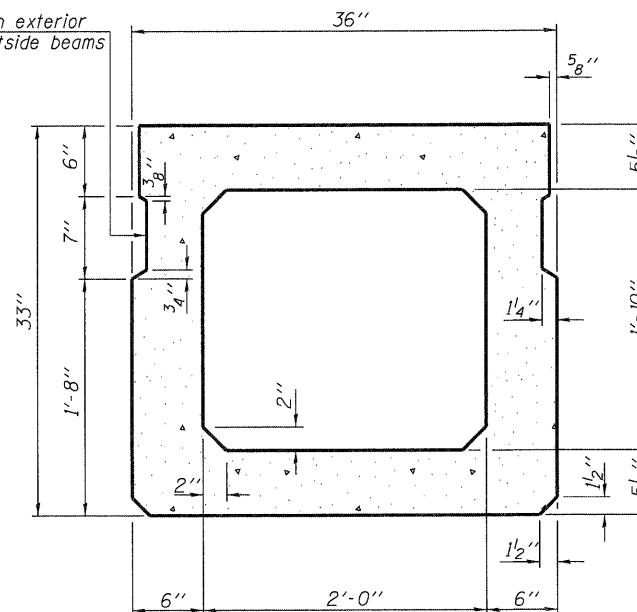
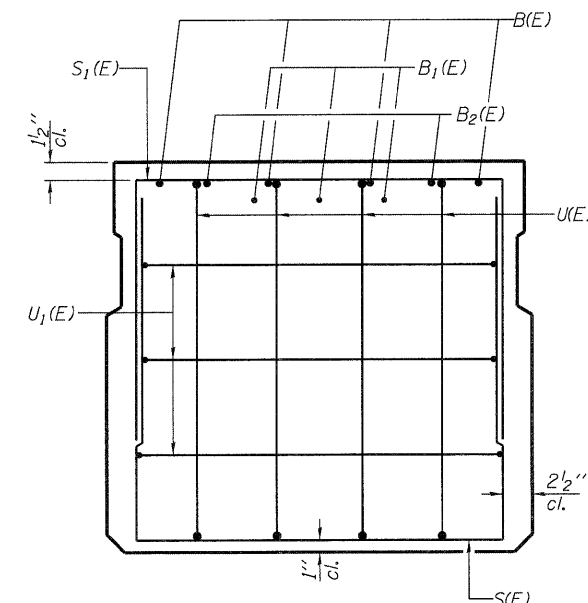


SECTION A-A

* Omit key on exterior face of outside beams

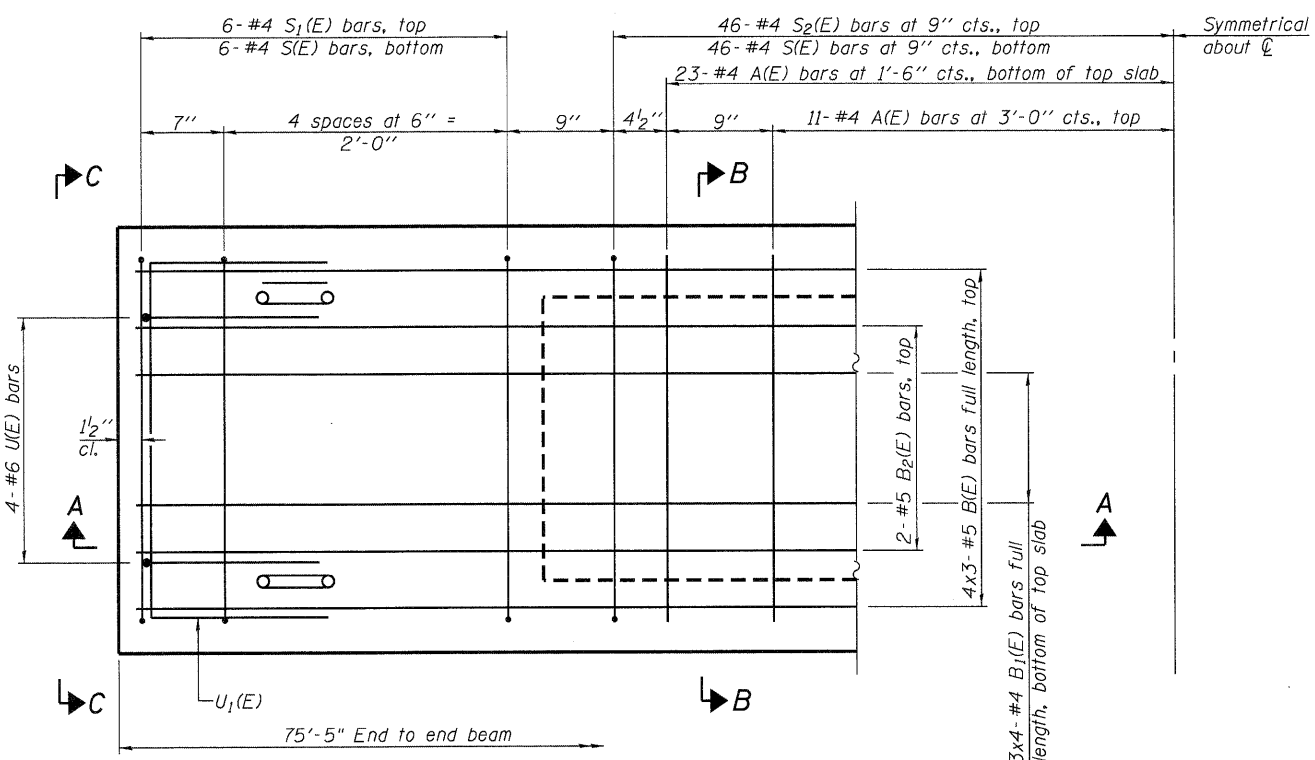


SECTION B-B
(Showing dimensions)

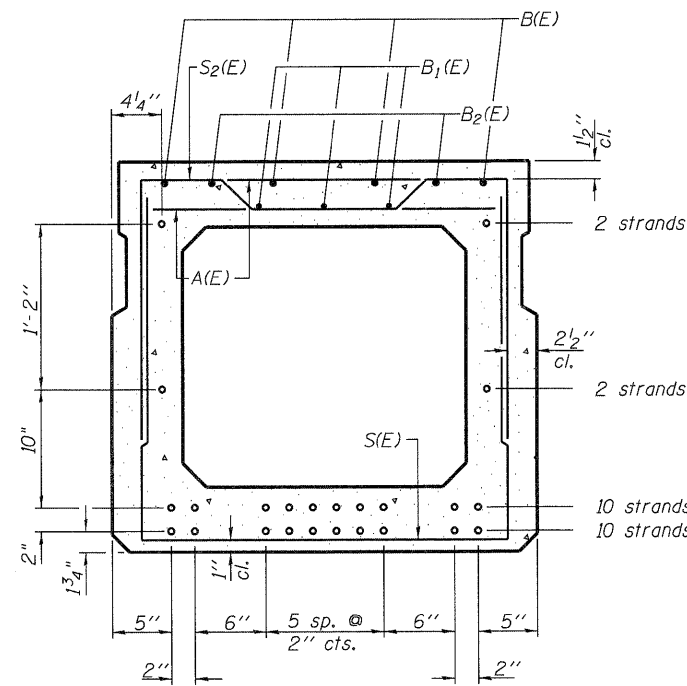


VIEW C-C

* Rail Post Anchor Devices to be cast into exterior face of outside beams. See sheet 5 of 11 for locations.



PLAN VIEW



SECTION B-B
(Showing reinforcement and permissible strand locations)

Note: Place the number of strands specified in each row symmetrically about the centerline of beam in the permissible strand locations shown.

BAR LIST
ONE BEAM ONLY
(For information only)

Bar	No.	Size	Length	Shape
A(E)	68	#4	2'-7"	—
B(E)	12	#5	26'-9"	—
B1(E)	12	#4	20'-4"	—
B2(E)	4	#5	10'-0"	—
S(E)	104	#4	7'-5"	U
S1(E)	12	#4	6'-3"	U
S2(E)	92	#4	6'-6"	U
U(E)	8	#6	5'-0"	C
U1(E)	6	#4	5'-0"	U

Note: See sheet 3 of 11 for additional details and Bill of Material.

Note: Spacing of S(E) and S2(E) bars may be adjusted up to 4" in the immediate area of the transverse tie diaphragms to miss the block outs for the transverse ties.

MINIMUM BAR LAP

#4 bar = 2'-0"
#5 bar = 2'-6"

PD-3336-0 7-1-10

USER NAME = dheberling	DESIGNED - TJZ	REVISED -
FILE NAME = 06.SN0840480.dgn	CHECKED - SDS	REVISED -
PLDT DATE = 9/7/2011	DRAWN - DLH	REVISED -
PLDT TIME = 11:17 AM	CHECKED - TJZ/SDS	REVISED -

WHKS & CO.
ENGINEERING
7018 KINGSMILL CT.,
SPRINGFIELD, IL
(217) 483-9457
DESIGN FIRM #184001036

STATE OF ILLINOIS
DEPARTMENT OF TRANSPORTATION

PPC DECK BEAM DETAILS
STRUCTURE NO. 084-0480

SHEET NO. 2 OF 11 SHEETS

F.A.S. RTE.	SECTION	COUNTY	TOTAL SHEETS	SHEET NO.
556	08-00119-04-BR	SANGAMON	25	9
				CONTRACT NO. 93556
ILLINOIS FED. AID PROJECT				