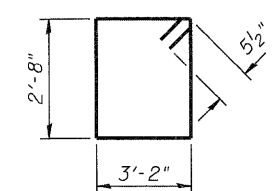
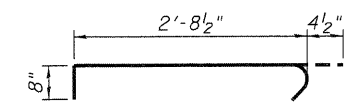


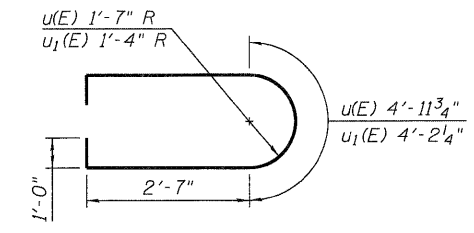
TOP PLAN



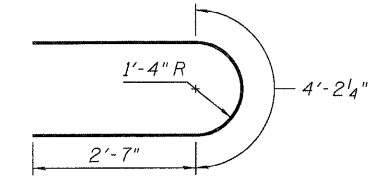
BAR s(E)



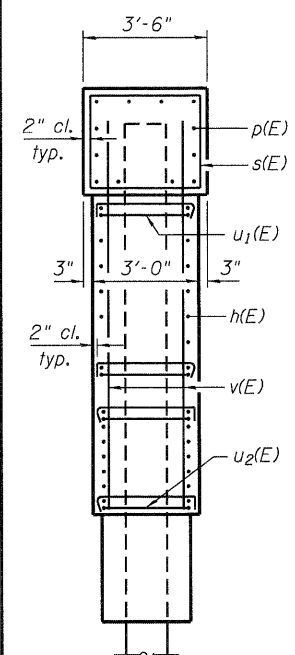
BAR s1(E)



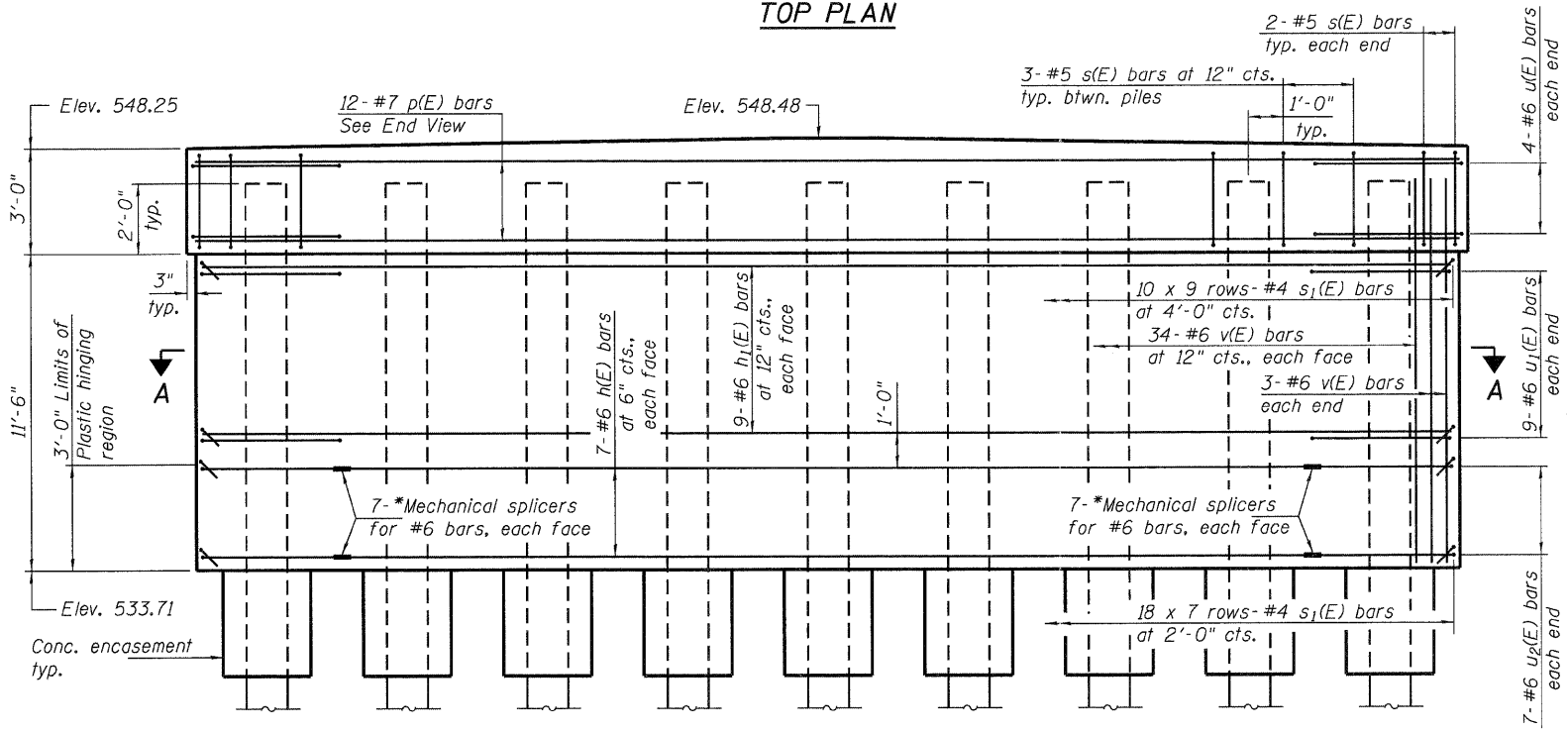
BARS u(E) & u1(E)



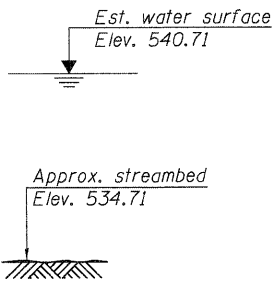
BARS u2(E)



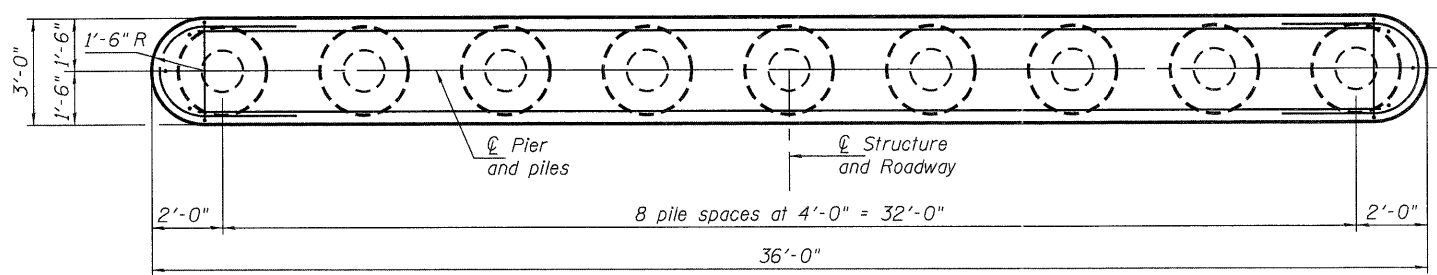
END VIEW



ELEVATION



* As an alternate to the Mechanical splicers shown, the Contractor may provide shop welded splices in accordance with AWS D1.4.



SECTION A-A

PILE DATA

Type: Metal Shell - 14" ϕ x 0.312" walls
 Nominal Required Bearing: 412 kips
 Factored Resistance Available: 221 kips
 Est. Length: 61 ft.
 No. Production Piles: 9

**PIER 1
BILL OF MATERIAL**

Bar	No.	Size	Length	Shape
h(E)	14	#6	27'-10"	—
h1(E)	18	#6	33'-0"	—
p(E)	12	#7	33'-0"	—
s(E)	28	#5	12'-7"	□
s1(E)	216	#4	3'-9"	U
u(E)	8	#6	12'-2"	U
u1(E)	18	#6	11'-5"	U
u2(E)	14	#6	9'-5"	U
v(E)	74	#6	13'-5"	—
Structure Excavation		Cu. Yd.	67	
Concrete Structures		Cu. Yd.	49.9	
Concrete Encasement		Cu. Yd.	2.9	
Reinforcement Bars, Epoxy Coated		Pound	5,340	
Furnishing Metal Shell Piles 14" x 0.312"		Foot	549	
Driving Piles		Foot	549	
Underwater Structure Excavation Protection Location 1		Each	1	
Mechanical Splicers		Each	28	

USER NAME = dheberling	DESIGNED = TJZ	REVISED =
FILE NAME = 08_S08040488.dgn	CHECKED = SDS	REVISED =
PLOT DATE = 9/7/2011	DRAWN = DLH	REVISED =
PLOT TIME = 11:11:31 AM	CHECKED = TJZ/SDS	REVISED =

WHKS & CO.
ENGINEERING
7018 KINGSMILL CT.,
SPRINGFIELD, IL
(217) 483-9457
DESIGN FIRM #184001036

**STATE OF ILLINOIS
DEPARTMENT OF TRANSPORTATION**

**PIER 1
STRUCTURE NO. 084-0480**
SHEET NO. 7 OF 11 SHEETS

F.A.S. RTE.	SECTION	COUNTY	TOTAL SHEETS	SHEET NO.
556	08-00119-04-BR	SANGAMON	25	14
CONTRACT NO. 93556				
ILLINOIS FED. AID PROJECT				