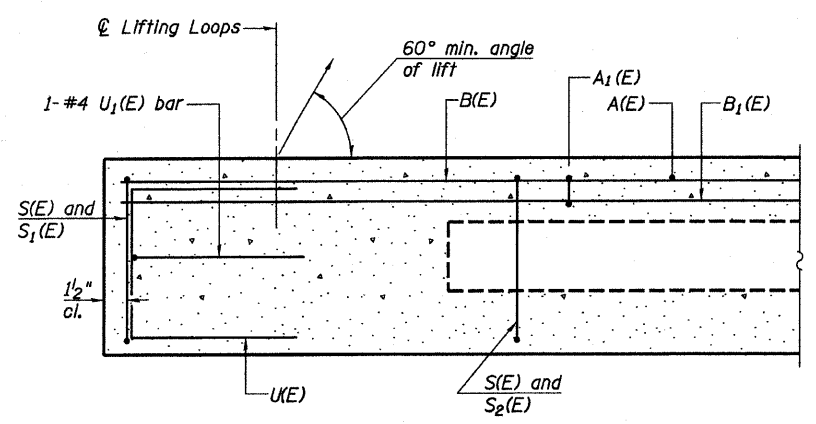
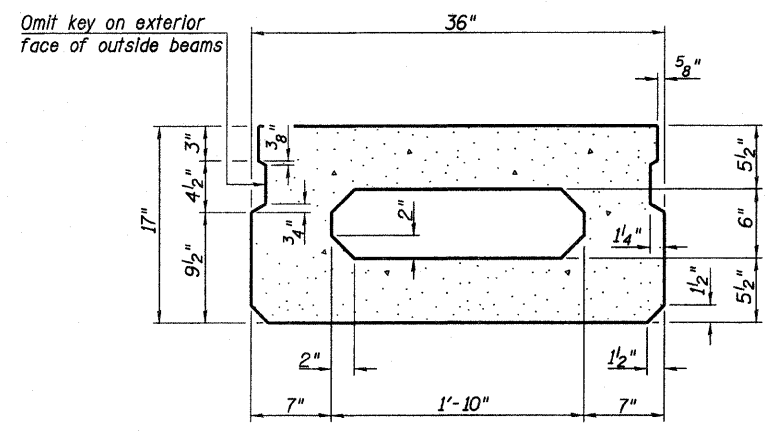


|                     |                |                  |              |           |
|---------------------|----------------|------------------|--------------|-----------|
| ROUTE NO.           | SECTION        | COUNTY           | TOTAL SHEETS | SHEET NO. |
| T.R. 29T            | 07-06117-00-BR | MARION           | 12           | 6         |
| FEDERAL AID PROJECT |                | ILLINOIS PROJECT |              |           |

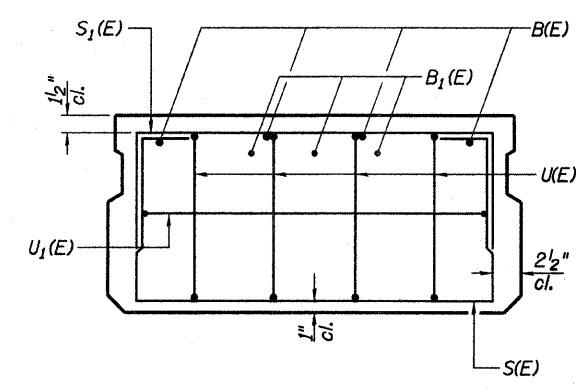
CONTRACT NO.



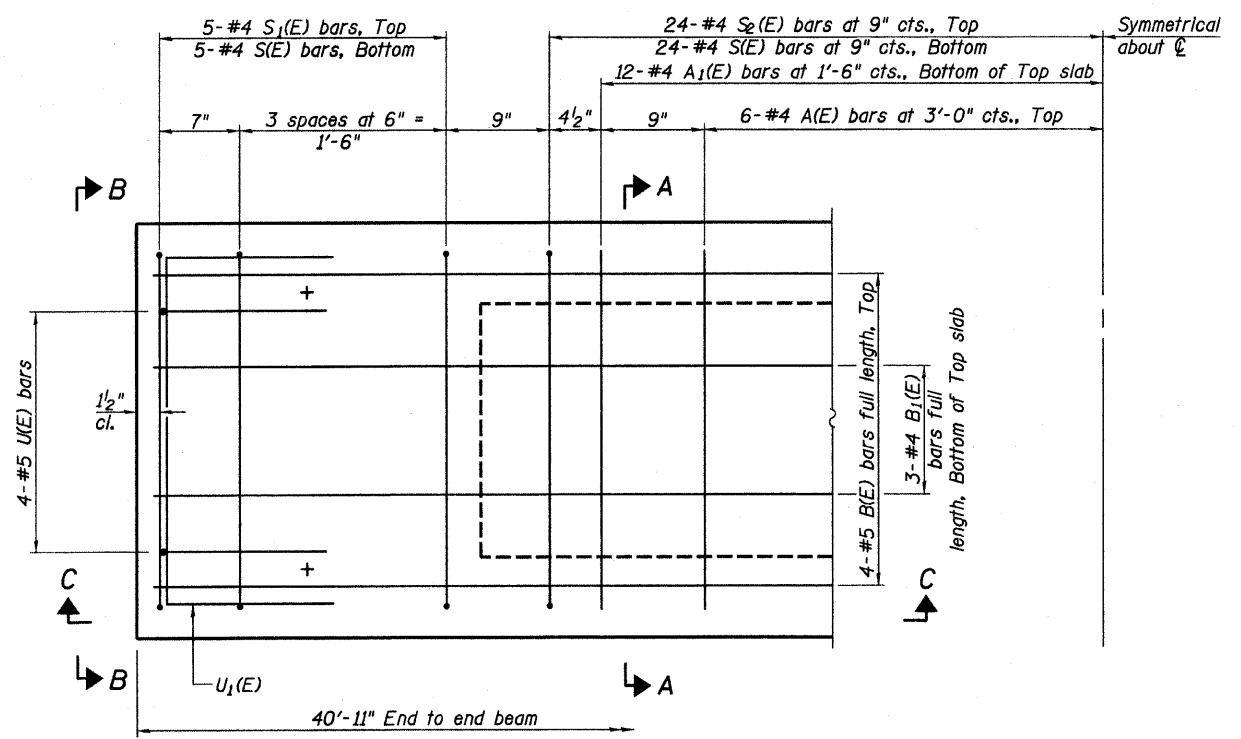
SECTION C-C



SECTION A-A  
(Showing dimensions)

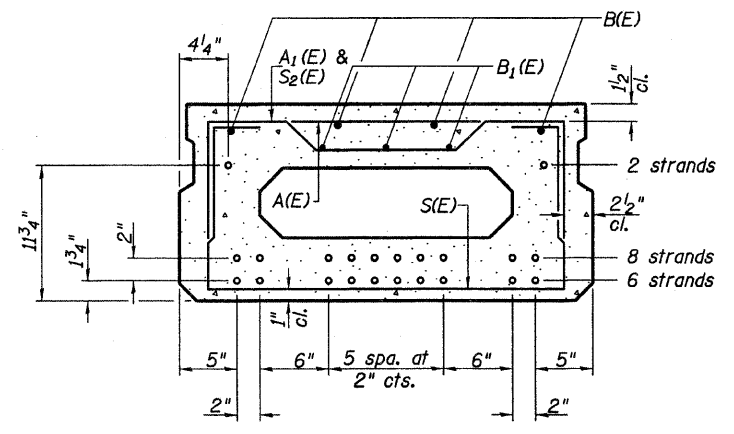


VIEW B-B



PLAN VIEW

Note: Spacing of S(E) and S2(E) bars may be adjusted up to 4" in the immediate area of the transverse tie diaphragms to miss the block outs for the transverse ties.



SECTION A-A

(Showing reinforcement and permissible strand locations)  
Note: Place the number of strands specified in each row symmetrically about the centerline of beam in the permissible strand locations shown.

Strands: 16 - 1/2" strands.

BAR LIST  
ONE BEAM ONLY  
(For information only)

| Bar   | No. | Size | Length | Shape |
|-------|-----|------|--------|-------|
| A(E)  | 12  | #4   | 2'-7"  | —     |
| A1(E) | 24  | #4   | 2'-11" | —     |
| B(E)  | 4   | #5   | 40'-7" | —     |
| B1(E) | 3   | #4   | 40'-7" | —     |
| S(E)  | 58  | #4   | 5'-9"  | U     |
| S1(E) | 10  | #4   | 4'-3"  | U     |
| S2(E) | 48  | #4   | 4'-6"  | U     |
| U(E)  | 8   | #5   | 3'-8"  | U     |
| U1(E) | 2   | #4   | 5'-0"  | U     |

Note: See sheet 7 of 12 for additional details.  
See sheet 4 of 12 for Bill of Material.

P.P.C. DECK BEAM  
DETAILS AND SECTIONS

24' ROADWAY  
17" x 36" BEAMS  
0° SKEW

RHUTASEL and ASSOCIATES, INC.  
CONSULTING ENGINEERS • LAND SURVEYORS  
CENTRALIA, ILLINOIS      FREEBURG, ILLINOIS

PREPARED FOR:  
AECOM  
200705482

Date: 08/15/2011  
Design: WDL  
Drawn: JSD  
Job No.: 51010