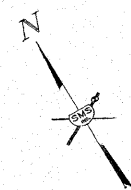
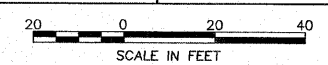


SECTION	COUNTY	TOTAL SHEETS	SHEET NO.
08-00021-00-PK	MADISON	12	4
CONTRACT NO. 97473			

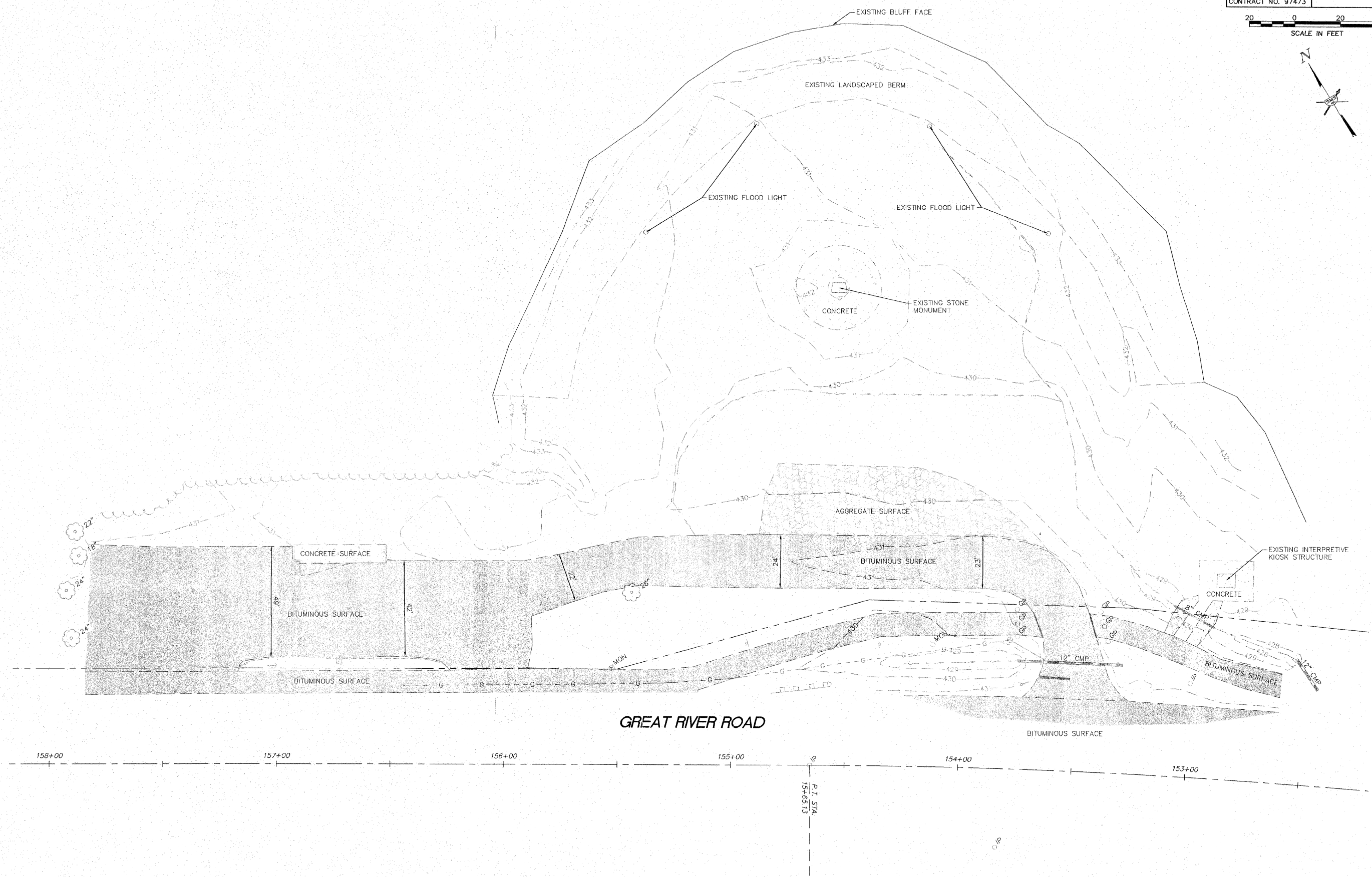


REVISIONS

**SMS** Sheppard, Morgan & Schwaab, Inc.  
 CONSULTING ENGINEERS AND LAND SURVEYORS  
 218 Maple Street, P.O. Box E, Alton, IL 62002, 6184623755, E-mail: mail@smsengineering.com  
 401 Central National Drive, Suite 3, O'Fallon, IL 62450, 6187772700, E-mail: mail@smsengineering.com  
**ENGINEERS** DESIGN FIRM # 184-00992

**IMPROVEMENT PLANS FOR HOFFMAN GARDENS  
 VILLAGE OF GODFREY, ILLINOIS  
 EXISTING SITE PLAN**

DWG. NO.	HOFFMAN EXISTING SITE.DWG
REF. BK.	PG.
JOB NO.	437560
DSN. BY:	SJW/DDT
DWN. BY:	BCS
CHK. BY:	SJW
DATE:	MAY, 2011
SCALE:	1"=20'
SHEET	C3 OF 12



S:\misc\projects\GODFREY PARK (437560)\HOFFMAN GARDENS\HOFFMAN EXISTING SITE.dwg, 6/7/2011 10:55:25 AM, bshapiro, 120