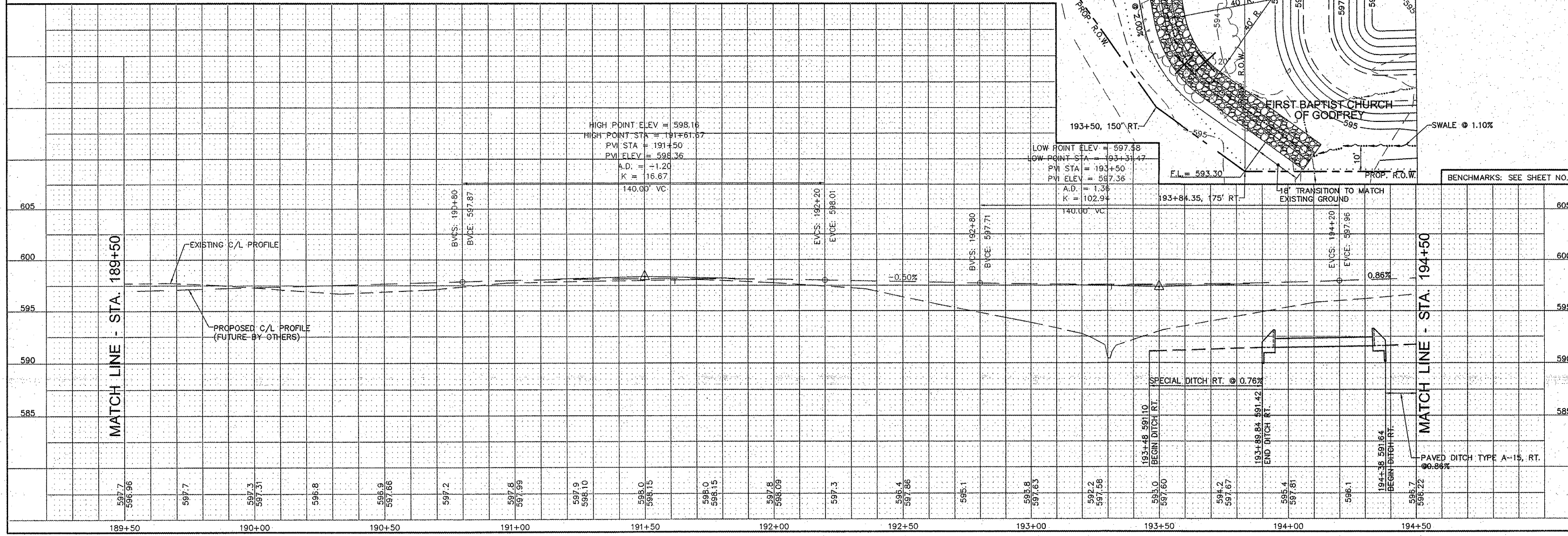


CONTRACT NO. 97476
SCALE IN FEET
N

- STORM SEWERS**
- 62 (51) TO (52) 39.5 FT. 10" SSB2 @ 0.40%
- DRAINAGE STRUCTURES**
- 51 CAST-IN-PLACE REINFORCED CONC. END SECTION, 10" STA. 194+33.67, 67.04' RT. F.L. = 591.60
 - 52 CAST-IN-PLACE REINFORCED CONC. END SECTION, 10" STA. 193+94.17, 67.04' RT. F.L. = 591.44



REVISIONS

SMS ENGINEERS
Sheppard, Morgan & Schwaab, Inc.
CONSULTING ENGINEERS AND LAND SURVEYORS
216 Harriet Street, P.O. Box E, Alton, IL 62802, 618-682-2755, Email: mat@smsengineers.com
10 Central Industrial Drive, Granite City, IL 62040, 618-687-9700, Email: mat@smsengineers.com
DESIGN FIRM # 184-000992

VILLAGE OF GODFREY, ILLINOIS
SECTION 04-00019-00-PV
CROSSTOWN ROAD - PHASE 1 A
PLAN AND PROFILE

DWG. NO. GCTR ROADWAY PP 11.dwg
REF. BK. PG. JOB NO. 237334
DSN. BY: DEG DWN. BY: CAD
CHK. BY: DEG DATE: APRIL, 2011
SCALE: 1" = 20' H. 1" = 5' V.
SHEET 5 OF 38