

REVISIONS

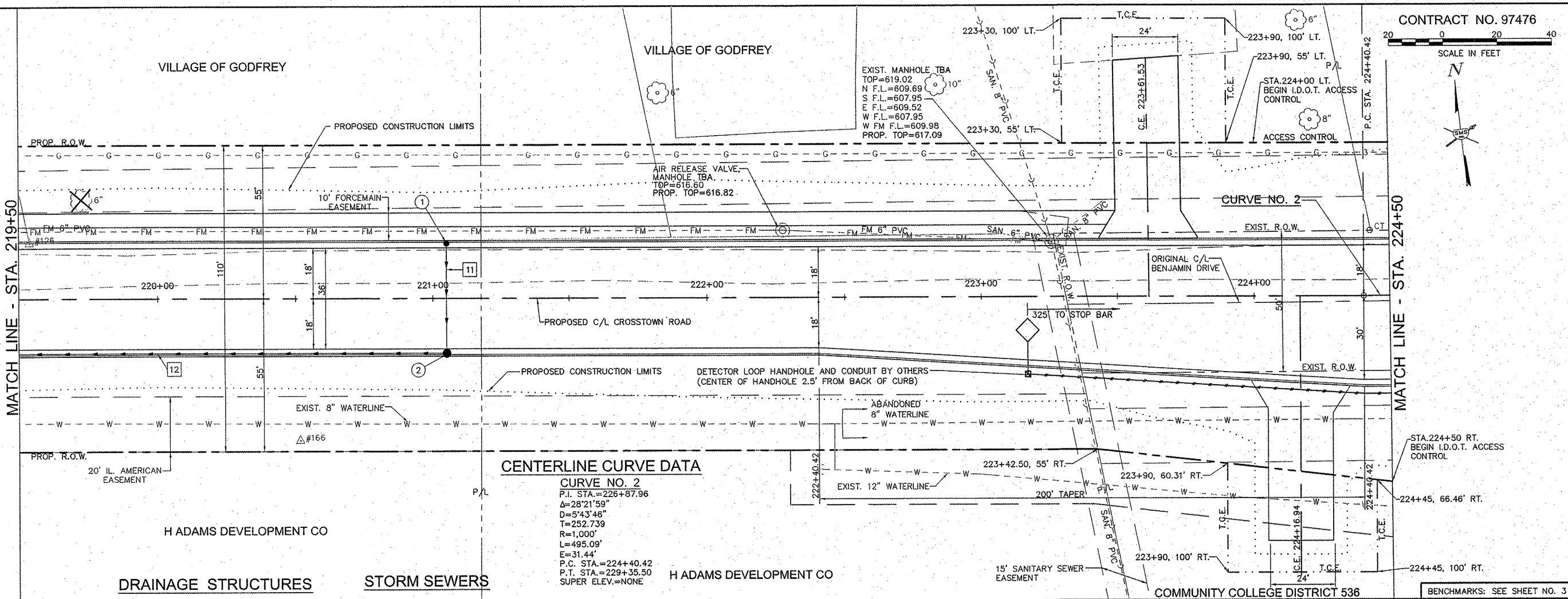
SMS Sheppard, Morgan & Schwaab, Inc.
 CONSULTING ENGINEERS AND LAND SURVEYORS
 215 Market Street, P.O. Box E, Alton, IL 62002 618462-9755 E-mail: mail@smsengr.com
 10 Central Indiana Drive, Gamma City, IL 62040 618877-9700 E-mail: mail@smsengr.com
 DESIGN FIRM # 184-000992

VILLAGE OF GODFREY, ILLINOIS
 SECTION 04-00019-00-PV
 CROSSTOWN ROAD - PHASE 1 A
 PLAN AND PROFILE

DWG. NO.	GCTR ROADWAY PP 17.DWG
REF. BK.	PG.
JOB NO.	237334
DSN. BY:	DEG
DWN. BY:	CAD
CHK. BY:	DEG
DATE:	APRIL, 2011
SCALE:	1" = 20' H. 1" = 5' V.
SHEET	11 OF 38

MATCH LINE - STA. 219+50

MATCH LINE - STA. 224+50



- DRAINAGE STRUCTURES**
- ① INLET TY. A-3V
 STA. 221+05, 19.54' LT.
 T.C. = 615.90
 12" S. F.L. = 612.90
 - ② INLET TY. B-3V
 STA. 221+05, 19.54' RT.
 T.C. = 615.66
 12" N. F.L. = 611.99
 12" W. F.L. = 611.89
- STORM SEWERS**
- ⑪ ① TO ② 39 FT. 12" SSI @ 2.33%
 TRENCH BACKFILL 4.0 CU. YDS.
 - ⑫ ② TO ③ 160 FT. 12" SSI @ 0.74%
 TRENCH BACKFILL 24.3 CU. YDS.

HIGH POINT ELEV = 617.25
 HIGH POINT STA = 223+33.08
 PVI STA = 223+50
 PVI ELEV = 617.60
 A.D. = -2.11
 K = 166.35
 140.00' VC

MATCH LINE - STA. 219+50

MATCH LINE - STA. 224+50

