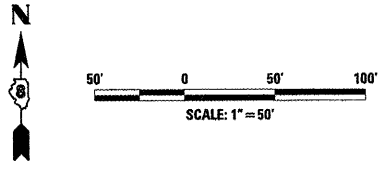


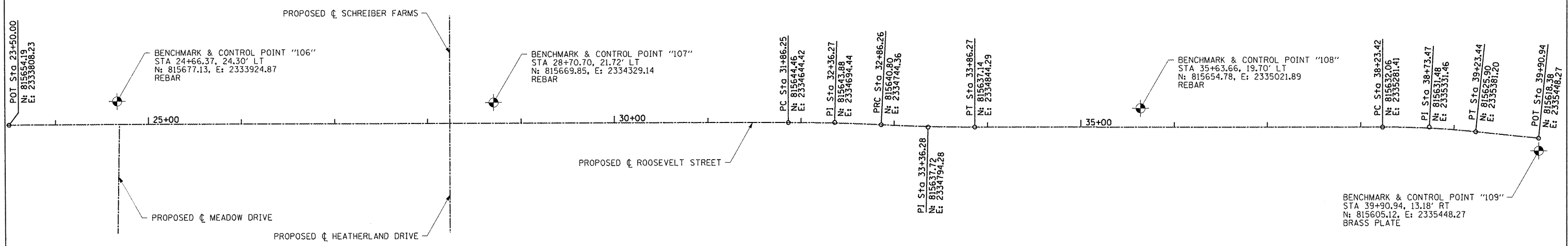
CONTRACT NO.			
F.A.U. RTE.	SECTION	COUNTY	TOTAL SHEETS
8979	09-00017-01-PV	MADISON	34
STA. 23+50.00		TO STA. 39+90.94	
FED. ROAD DIST. NO.	ILLINOIS	FEDERAL AID PROJECT	
CONTRACT NO. 97479			



PROP. CURVE ROOSEVELT-5
 PI STA. = 32+36.27
 $\Delta = 2^\circ 51' 54''$ (RT)
 $D = 2^\circ 51' 53''$
 $R = 2,000.00'$
 $T = 50.02'$
 $L = 100.01'$
 $E = 0.63'$
 $e = \text{N.C.}$
 $T.R. = \text{N.A.}$
 $S.E. \text{ RUN} = \text{N.A.}$
 $P.C. \text{ STA.} = 31+86.25$
 $P.T. \text{ STA.} = 32+86.26$

PROP. CURVE ROOSEVELT-6
 PI STA. = 33+36.28
 $\Delta = 2^\circ 51' 54''$ (LT)
 $D = 2^\circ 51' 53''$
 $R = 2,000.00'$
 $T = 50.02'$
 $L = 100.01'$
 $E = 0.63'$
 $e = \text{N.C.}$
 $T.R. = \text{N.A.}$
 $S.E. \text{ RUN} = \text{N.A.}$
 $P.C. \text{ STA.} = 32+86.26$
 $P.T. \text{ STA.} = 33+86.27$

PROP. CURVE ROOSEVELT-7
 PI STA. = 38+73.47
 $\Delta = 5^\circ 43' 51''$ (RT)
 $D = 5^\circ 43' 46''$
 $R = 1,000.00'$
 $T = 50.05'$
 $L = 100.02'$
 $E = 1.25'$
 $e = \text{N.C.}$
 $T.R. = \text{N.A.}$
 $S.E. \text{ RUN} = \text{N.A.}$
 $P.C. \text{ STA.} = 38+23.42$
 $P.T. \text{ STA.} = 39+23.44$



PLOT DATE = 8/24/2011
 PLOT SCALE = 1/8" = 50'
 USER NAME = Aaron Klenke

REVISIONS	
NAME	DATE

ILLINOIS DEPARTMENT OF TRANSPORTATION

ALIGNMENT AND BENCHMARKS

SCALE: VERT. N.A.
 HORIZ. 1" = 50'
 DATE 8/19/2011

DRAWN BY RJM, AJK
 CHECKED BY JWB