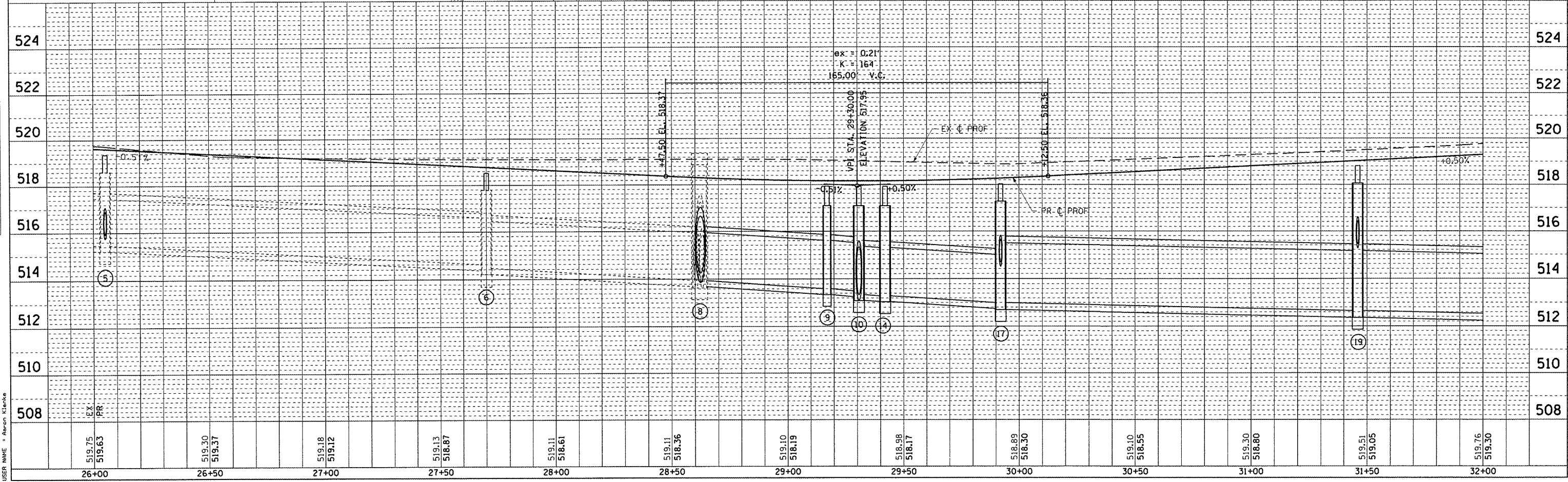
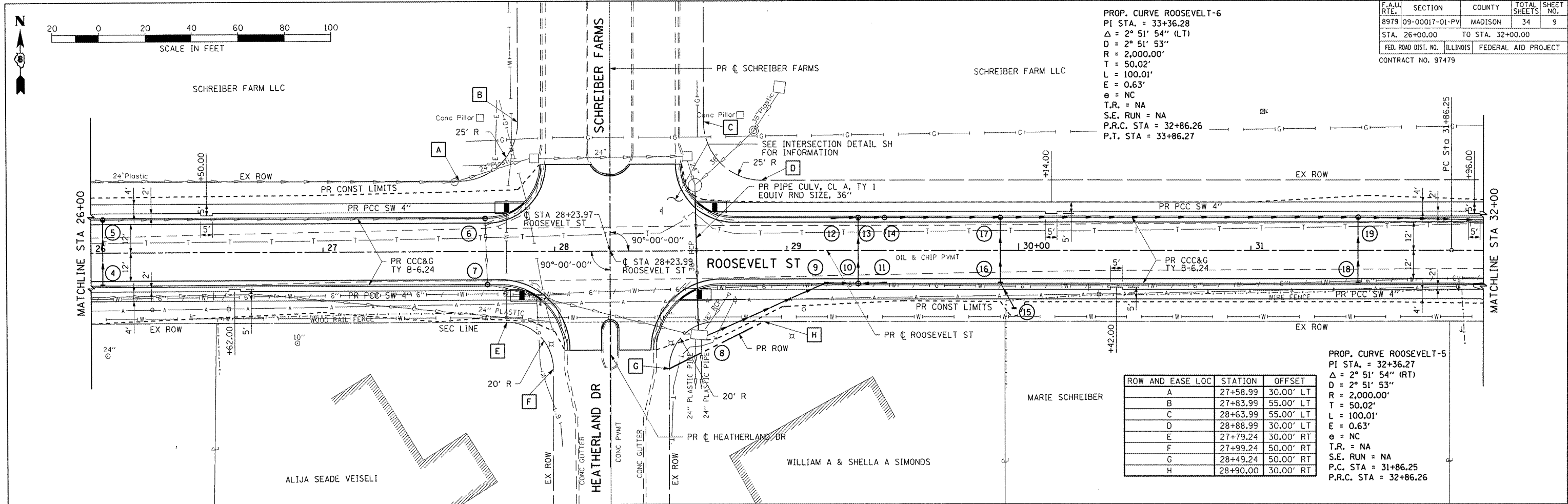


CONTRACT NO.			
F.A.U. R.T.E.	SECTION	COUNTY	TOTAL SHEETS
8979	09-00017-01-PV	MADISON	34
STA. 26+00.00		TO STA. 32+00.00	
FED. ROAD DIST. NO.	ILLINOIS	FEDERAL AID PROJECT	
CONTRACT NO. 97479			

PROP. CURVE ROOSEVELT-6
 PI STA. = 33+36.28
 $\Delta = 2^\circ 51' 54''$ (LT)
 $D = 2^\circ 51' 53''$
 $R = 2,000.00'$
 $T = 50.02'$
 $L = 100.01'$
 $E = 0.63'$
 $e = NC$
 $T.R. = NA$
 $S.E. RUN = NA$
 $P.R.C. STA = 32+86.26$
 $P.T. STA = 33+86.27$

PROP. CURVE ROOSEVELT-5
 PI STA. = 32+36.27
 $\Delta = 2^\circ 51' 54''$ (RT)
 $D = 2^\circ 51' 53''$
 $R = 2,000.00'$
 $T = 50.02'$
 $L = 100.01'$
 $E = 0.63'$
 $e = NC$
 $T.R. = NA$
 $S.E. RUN = NA$
 $P.C. STA = 31+86.25$
 $P.R.C. STA = 32+86.26$

ROW AND EASE LOC	STATION	OFFSET
A	27+58.99	30.00' LT
B	27+83.99	55.00' LT
C	28+63.99	55.00' LT
D	28+88.99	30.00' LT
E	27+79.24	30.00' RT
F	27+99.24	50.00' RT
G	28+49.24	50.00' RT
H	28+90.00	30.00' RT



PLAN & PROFILE: ROOSEVELT STREET - STA 26+00.00 TO STA 32+00.00

PLAN	DATE
BY	
NO.	

PROFILE	DATE
BY	
NO.	

PLOT DATE = 8/24/2011
 PLOT SCALE = 42.563 / IN
 USER NAME = Aaron Klank