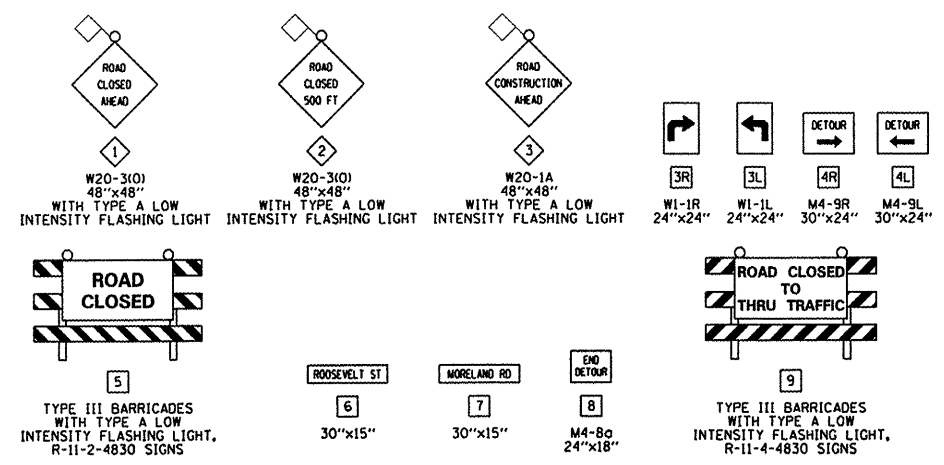
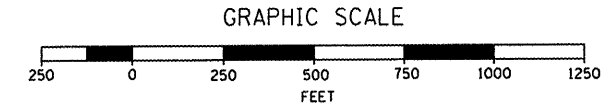
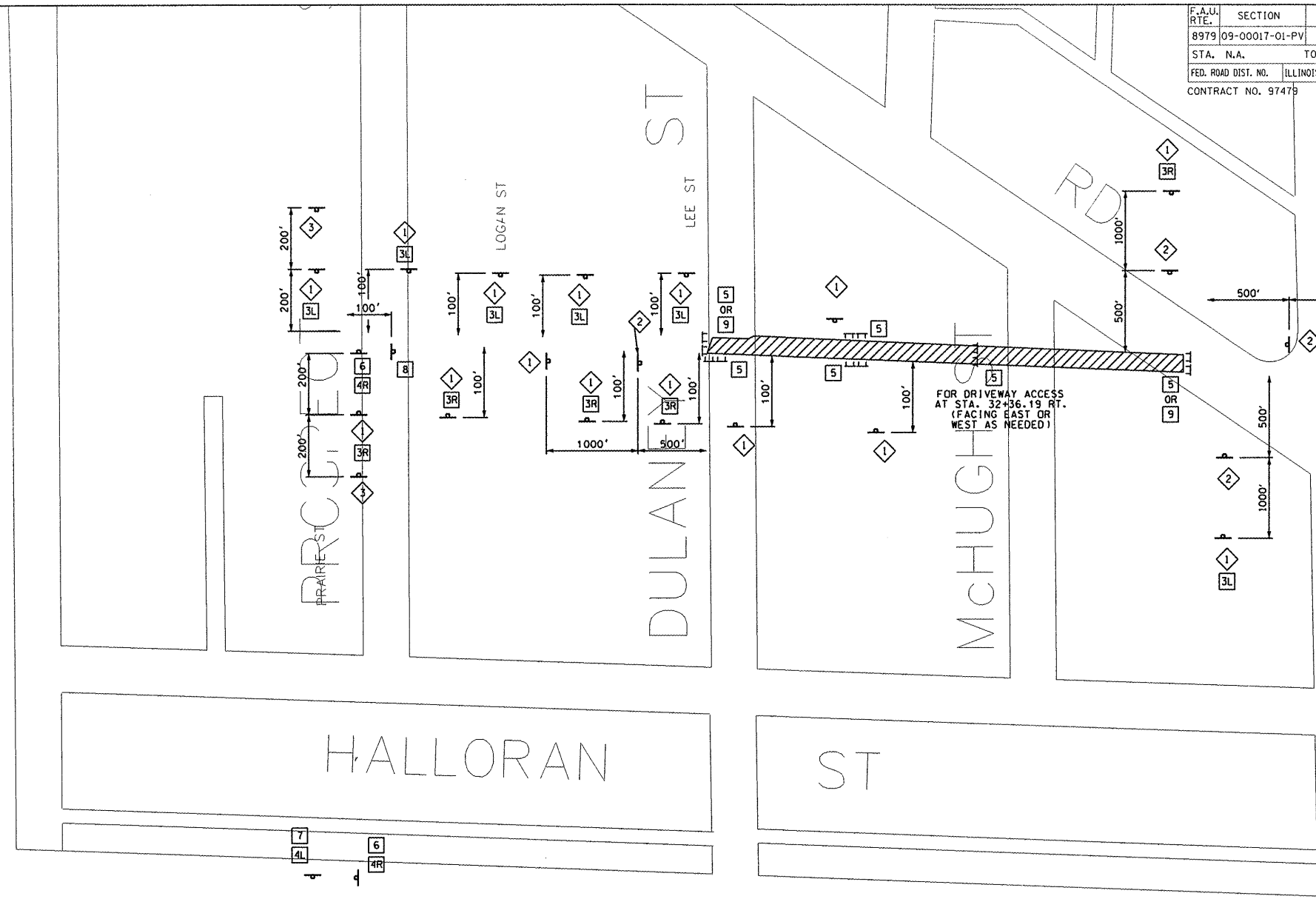


F.A.U. RTE.		SECTION	COUNTY	TOTAL SHEETS	SHEET NO.
8979		09-0017-01-PV	MADISON	34	14
STA. N.A.		TO STA. N.A.			
FED. ROAD DIST. NO.		ILLINOIS	FEDERAL AID PROJECT		
CONTRACT NO. 97479					

CONSTRUCTION NOTES

- ROOSEVELT STREET SHALL BE CLOSED FROM STA. 23+50.00 TO STA. 39+23.44 DURING THIS STAGE.
- ACCESS TO ALL PROPERTIES SHALL BE MAINTAINED AT ALL TIMES. IF A RESIDENT'S DRIVEWAY IS NOT ACCESSIBLE DURING CONSTRUCTION, THE CONTRACTOR SHALL PROVIDE AN ACCEPTABLE PARKING SPACE AS DETERMINED BY THE ENGINEER ALONG A SIDE STREET/ALLEY. THE CONTRACTOR SHALL ALSO PROVIDE AN ACCESSIBLE ROUTE AS DETERMINED BY THE ENGINEER FROM THE ON-STREET PARKING AREA TO THE RESIDENT'S HOUSE.
- COORDINATE UTILITY ADJUSTMENTS AND RELOCATIONS WITH APPROPRIATE UTILITY PRIOR TO CONSTRUCTION.
- STAGE 1: STA. 23+50.00 TO STA 32+36.19.
 - ACCESS TO THE DRIVEWAY LOCATED AT STA. 32+36.19 RT. SHALL BE MAINTAINED AT ALL TIMES. DURING STAGE 1, ACCESS TO THE DRIVEWAY SHALL BE PROVIDED FROM THE EAST BY STAGGERING THE TYPE III BARRICADES LOCATED ON ROOSEVELT STREET AT THE MORELAND ROAD INTERSECTION AS SHOWN IN STANDARD BLR 22-6. "ROAD CLOSED TO THRU TRAFFIC" SIGNS SHALL BE USED ON THE TYPE III BARRICADES WHEN THEY ARE STAGGERED. ADDITIONAL NON-STAGGERED TYPE III BARRICADES SHALL BE PLACED AT THE DRIVEWAY LOCATED AT STA. 32+36.19 RT. AS SHOWN IN STANDARD BLR 21-8. "ROAD CLOSED" SIGNS SHALL BE USED ON THE NON-STAGGERED BARRICADES. THE CONTRACTOR MAY ADJUST THE BARRICADES TO PROVIDE ACCESS FROM THE WEST DURING THE CONSTRUCTION OF THE PORTION OF THE STORM SEWER SYSTEM LOCATED EAST OF THE DRIVEWAY AT STA. 32+36.19 RT. ALL TRAFFIC CONTROL ADJUSTMENTS SHALL BE APPROVED BY THE ENGINEER. CONTRACTOR SHALL COORDINATE THE ACCESS TO THE DRIVEWAY AT STA. 32+36.19 RT. WITH THE PROPERTY OWNER.
 - INSTALL TEMPORARY EROSION CONTROL.
 - COMPLETE REMOVAL AND ADJUSTMENT ITEMS.
 - CONSTRUCT ROADWAY EMBANKMENT AND PREPARE SUBGRADE.
 - CONSTRUCT STORM SEWER SYSTEM (STRUCTURE NO. 1 THRU NO. 27).
 - CONSTRUCT MODIFIED SOIL AND CCC&G.
 - CONSTRUCT CONCRETE PAVEMENT.
 - CONSTRUCT PCC DRIVEWAY PAVEMENTS AND PCC SIDEWALK.
- STAGE 2: STA. 32+36.19 TO STA 39+23.44.
 - ACCESS TO THE DRIVEWAY LOCATED AT STA. 32+36.19 RT. SHALL BE MAINTAINED AT ALL TIMES. DURING STAGE 2, ACCESS TO THE DRIVEWAY SHALL BE PROVIDED FROM THE WEST BY STAGGERING THE TYPE III BARRICADES LOCATED ON ROOSEVELT STREET AT THE MEADOW DRIVE INTERSECTION AS SHOWN IN STANDARD BLR 22-6. "ROAD CLOSED TO THRU TRAFFIC" SIGNS SHALL BE USED ON THE TYPE III BARRICADES WHEN THEY ARE STAGGERED. ADDITIONAL NON-STAGGERED TYPE III BARRICADES SHALL BE PLACED AT THE DRIVEWAY LOCATED AT STA. 32+36.19 RT. AS SHOWN IN STANDARD BLR 21-8. "ROAD CLOSED" SIGNS SHALL BE USED ON THE NON-STAGGERED BARRICADES. ALL TRAFFIC CONTROL ADJUSTMENTS SHALL BE APPROVED BY THE ENGINEER. CONTRACTOR SHALL COORDINATE THE ACCESS TO THE DRIVEWAY AT STA. 32+36.19 RT. WITH THE PROPERTY OWNER.
 - INSTALL TEMPORARY EROSION CONTROL.
 - COMPLETE REMOVAL AND ADJUSTMENT ITEMS.
 - CONSTRUCT ROADWAY EMBANKMENT AND PREPARE SUBGRADE.
 - CONSTRUCT STORM SEWER SYSTEM (STRUCTURE NO. 28 THRU NO. 32).
 - CONSTRUCT MODIFIED SOIL AND CCC&G.
 - CONSTRUCT CONCRETE PAVEMENT.
 - CONSTRUCT PCC DRIVEWAY PAVEMENTS AND PCC SIDEWALK.
- COMPLETE FINAL GRADING FOR ENTIRE PROJECT.
- COMPLETE PERMANENT SEEDING, SIGNING AND PAVEMENT MARKING FOR ENTIRE PROJECT.
- BARRICADES AND CONSTRUCTION SIGNS SHALL BE POSITIONED AS SHOWN IN IDOT STANDARD 701901 AND AS DIRECTED BY THE ENGINEER.
- TYPE A LOW INTENSITY LIGHTS SHALL BE USED ON EACH BARRICADE, DRUM AND SIGN IN ADVANCE AND WITHIN THE WORK AREA SHOWN DURING HOURS OF DARKNESS. DRUMS SHALL HAVE STEADY BURN LIGHTS FOR HAZARDOUS OR OBSTACLES GREATER THAN 100' IN LENGTH.
- ALL WARNING SIGNS SHALL HAVE MINIMUM DIMENSIONS OF 48" BY 48" AND HAVE A BLACK LEGEND ON AN ORANGE REFLECTORIZED BACKGROUND.
- ALL WORK ZONE SIGNS ARE REQUIRED TO MEET, AS A MINIMUM, TYPE B REFLECTIVITY REQUIREMENTS OF TABLE 1091-2 IN ARTICLE 1091.02 OF THE STANDARD SPECIFICATIONS.
- LONGITUDINAL DIMENSIONS MAY BE ADJUSTED TO FIT FIELD CONDITIONS.
- WHEN FLUORESCENT SIGNS ARE USED, ORANGE FLAGS ARE NOT REQUIRED.
- ALL SIGNS SHALL BE POST MOUNTED IF CLOSURE TIME EXCEEDS FOUR DAYS.
- ALL IMPROVEMENTS TO ROOSEVELT STREET DURING THIS STAGE SHALL BE COMPLETED UTILIZING TRAFFIC CONTROL AND PROTECTION STANDARDS 701901, BLR-21 AND BLR-22.
- ACTUAL NUMBER OF BARRICADES REQUIRED MAY DIFFER FROM THE NUMBER SHOWN.



REVISIONS	
NAME	DATE

ILLINOIS DEPARTMENT OF TRANSPORTATION
TRAFFIC CONTROL PLAN
 SCALE: VERT. N.A.
 HORIZ. 1"=250'
 DATE 8/19/2011
 DRAWN BY RJM, AJK
 CHECKED BY JWB

PLOT DATE = 8/24/2011
 FILE NAME = J:\Nashville\0546083\dr\m\shw\phase 2\014 DETOUR.MXD.dgn
 PLOT SCALE = 211765 / IN.
 USER NAME = Aaron Klank