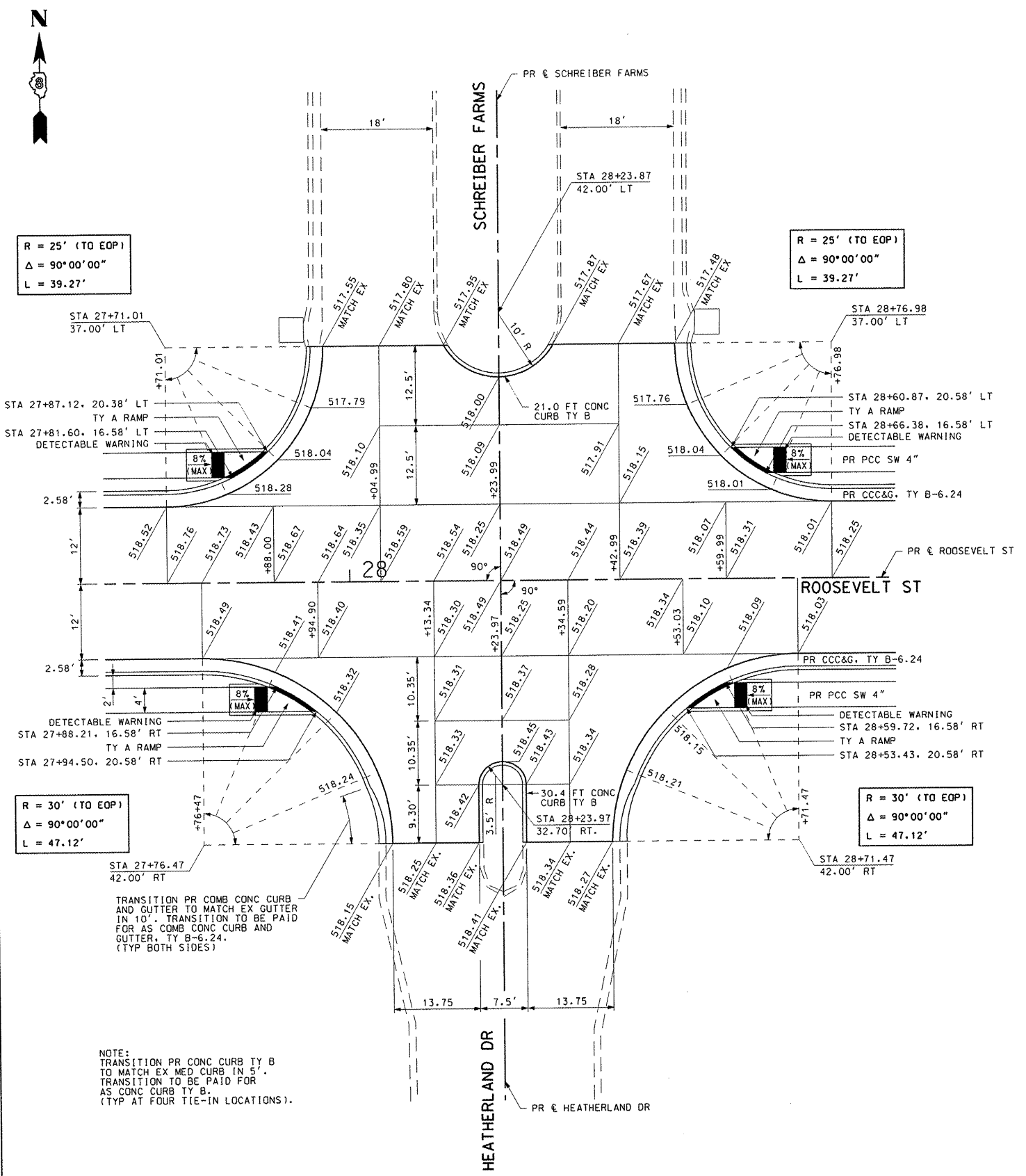
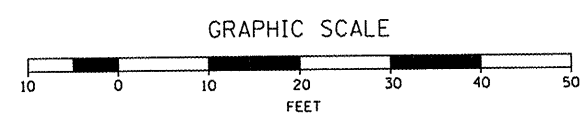


F.A.U. RTE.		SECTION	COUNTY	TOTAL SHEETS	SHEET NO.
8979		09-00017-01-PV	MADISON	34	20
STA. N.A.		TO STA. N.A.			
FED. ROAD DIST. NO.		ILLINOIS	FEDERAL AID PROJECT		
CONTRACT NO. 97479					



R = 25' (TO EOP)  
 Δ = 90°00'00"  
 L = 39.27'

R = 25' (TO EOP)  
 Δ = 90°00'00"  
 L = 39.27'

R = 30' (TO EOP)  
 Δ = 90°00'00"  
 L = 47.12'

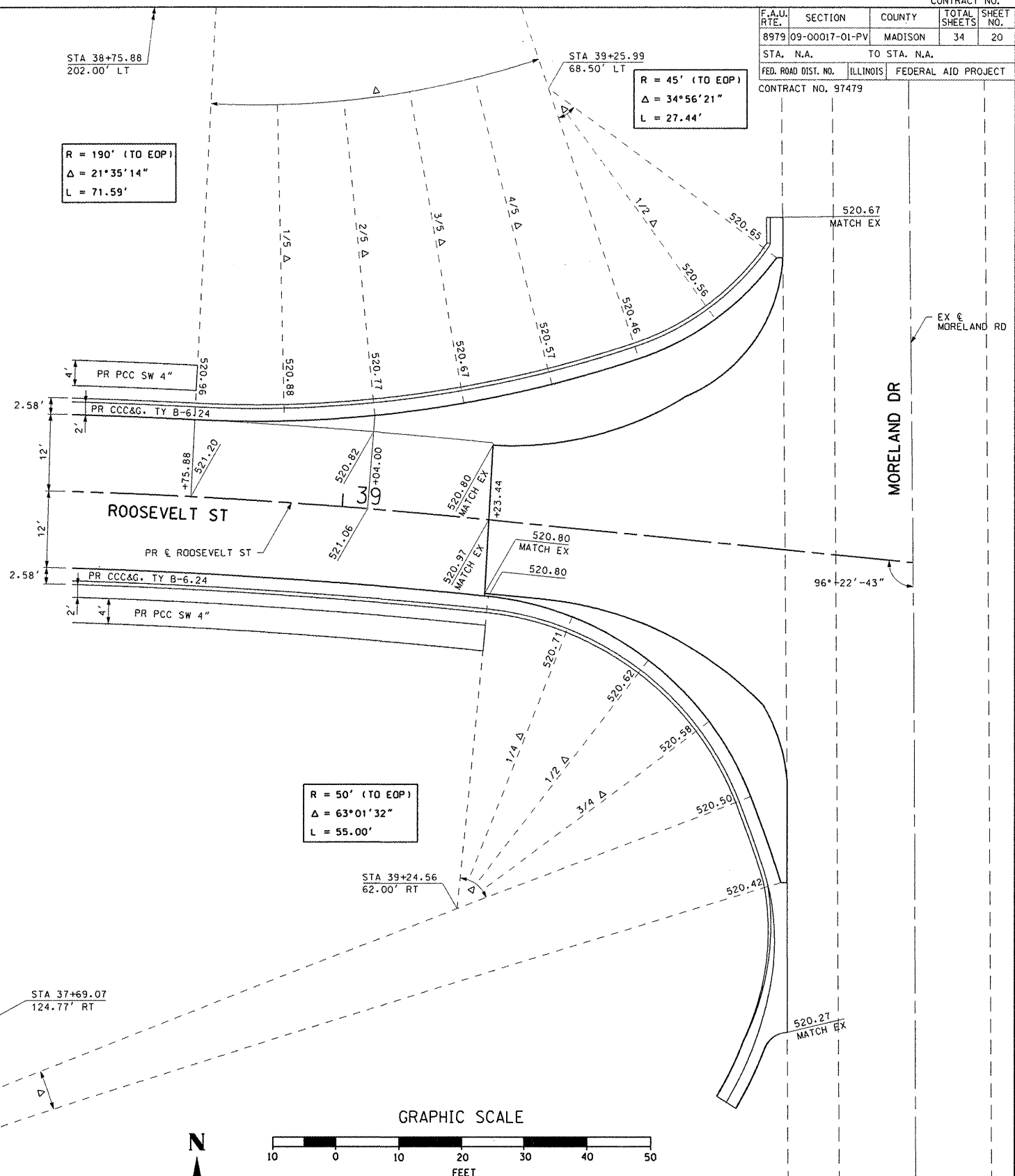
R = 30' (TO EOP)  
 Δ = 90°00'00"  
 L = 47.12'

R = 210' (TO EOP)  
 Δ = 4°00'26"  
 L = 14.69'

NOTE:  
 TRANSITION PR CONC CURB TY B  
 TO MATCH EX MED CURB IN 5'.  
 TRANSITION TO BE PAID FOR  
 AS CONC CURB TY B.  
 (TYP AT FOUR TIE-IN LOCATIONS).

Roosevelt Street and Heatherland Drive and Schreiber Farms

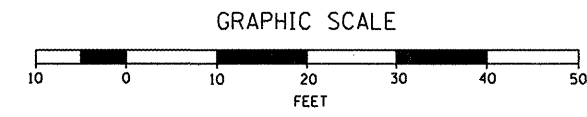
PLOT DATE = 8/24/2011  
 FILE NAME = I:\nrb\h101\0546803\p\sh\sh\phase 2\020-INTERSECTION-DETAILS.005.dgn  
 USER NAME = jrb\jrb



R = 190' (TO EOP)  
 Δ = 21°35'14"  
 L = 71.59'

R = 45' (TO EOP)  
 Δ = 34°56'21"  
 L = 27.44'

R = 50' (TO EOP)  
 Δ = 63°01'32"  
 L = 55.00'



REVISIONS	
NAME	DATE

ILLINOIS DEPARTMENT OF TRANSPORTATION  
**INTERSECTION DETAILS**  
 SCALE: VERT. N.A.  
 HORIZ. 1"=10'  
 DATE 8/19/2011  
 DRAWN BY RJM, AJK  
 CHECKED BY JWB

Roosevelt Street & Moreland Drive

INTERSECTION DETAILS: ROOSEVELT STREET