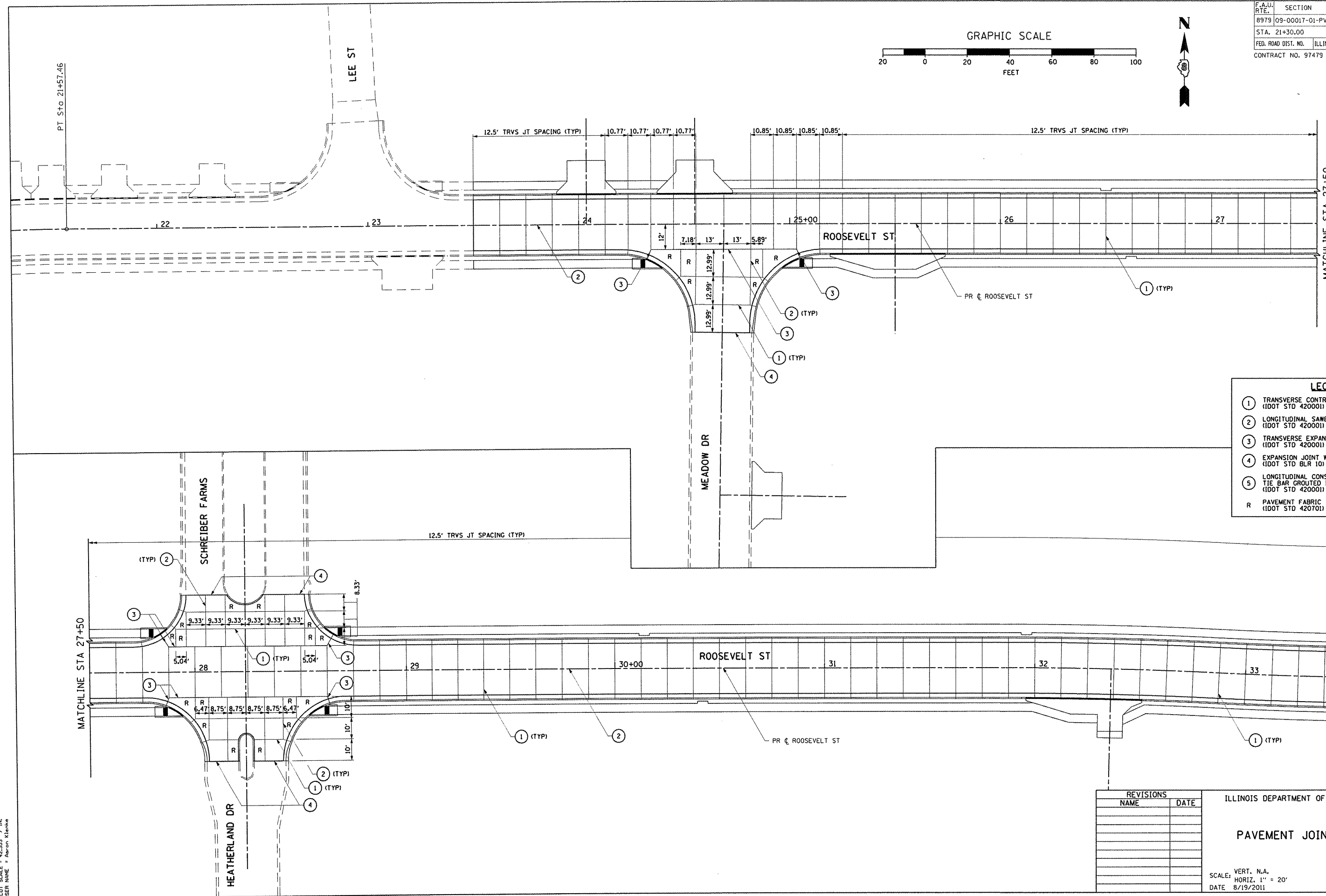
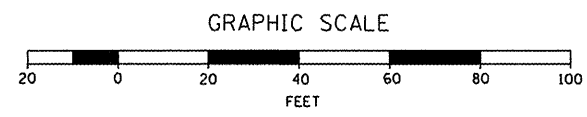


CONTRACT NO.			
F.A.J.J. RTE.	SECTION	COUNTY	TOTAL SHEETS
8979	09-0017-01-PV	MADISON	34
STA. 21+30.00		TO STA. 33+50.00	
FED. ROAD DIST. NO.	ILLINOIS	FEDERAL AID PROJECT	
CONTRACT NO. 97479			



LEGEND

- ① TRANSVERSE CONTRACTION JOINT (DOT STD 420001)
- ② LONGITUDINAL SAWED JOINT (DOT STD 420001)
- ③ TRANSVERSE EXPANSION JOINT (DOT STD 420001)
- ④ EXPANSION JOINT WITH THICKENED EDGE (DOT STD BLR 10)
- ⑤ LONGITUDINAL CONSTRUCTION JOINT WITH TIE BAR GROUTED IN PLACE (DOT STD 420001)
- R PAVEMENT FABRIC (DOT STD 420701)

REVISIONS	
NAME	DATE

ILLINOIS DEPARTMENT OF TRANSPORTATION

PAVEMENT JOINTING PLAN

SCALE: VERT. N.A.
 HORIZ. 1" = 20'
 DATE 8/19/2011

DRAWN BY RJM, AJK
 CHECKED BY JWB

PLOT DATE = 8/24/2011
 FILE NAME = I:\bshato\MS46803\Draws\Sheets\phase 2\024_JOINT_002.dgn
 PLOT SCALE = 42.353 / IN.
 USER NAME = Adam Klerene

PAVEMENT JOINTING PLAN: ROOSEVELT STREET - STA. 21+30.00 TO STA. 33+50.00