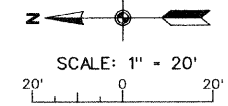
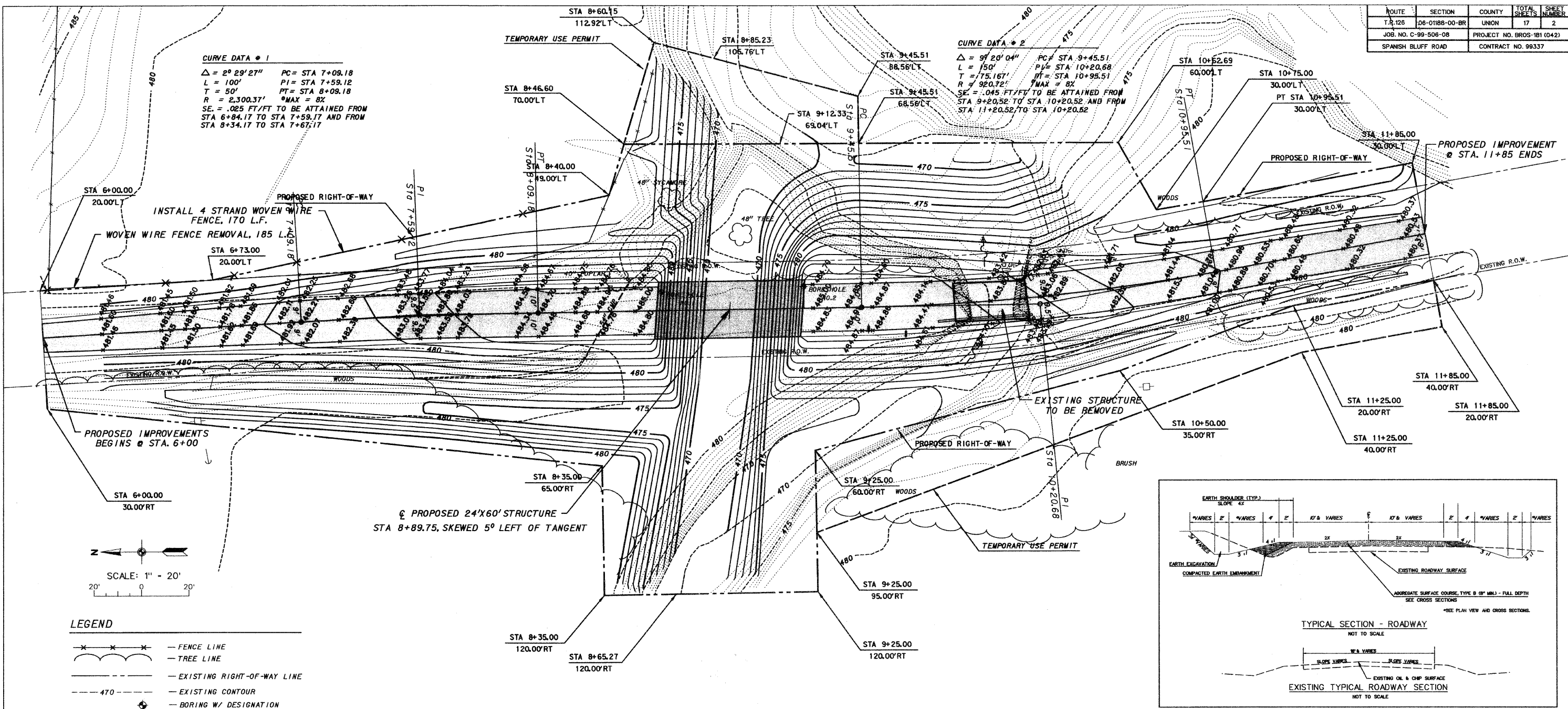


ROUTE	SECTION	COUNTY	TOTAL SHEETS	SHEET NUMBER
T.R. 126	06-01188-00-BR	UNION	17	2
JOB NO. C-99-506-08		PROJECT NO. BR08-181 (042)		
SPANISH BLUFF ROAD		CONTRACT NO. 98337		

**CURVE DATA # 1**  
 $\Delta = 2^\circ 29' 27''$  PC = STA 7+09.18  
 L = 100' PI = STA 7+59.12  
 T = 50' PT = STA 8+09.18  
 R = 2,300.37' \*MAX = 8%  
 SE = .025 FT/FT TO BE ATTAINED FROM STA 6+84.17 TO STA 7+59.17 AND FROM STA 8+34.17 TO STA 7+67.17

**CURVE DATA # 2**  
 $\Delta = 9^\circ 20' 04''$  PC = STA 9+45.51  
 L = 150' PI = STA 10+20.68  
 T = 75.167' PT = STA 10+95.51  
 R = 920.72' \*MAX = 8%  
 SE = .045 FT/FT TO BE ATTAINED FROM STA 9+20.52 TO STA 10+20.52 AND FROM STA 11+20.52 TO STA 10+20.52



- LEGEND**
- X --- X --- FENCE LINE
  - ( ) --- TREE LINE
  - --- EXISTING RIGHT-OF-WAY LINE
  - 470 --- EXISTING CONTOUR
  - B --- BORING W/ DESIGNATION

