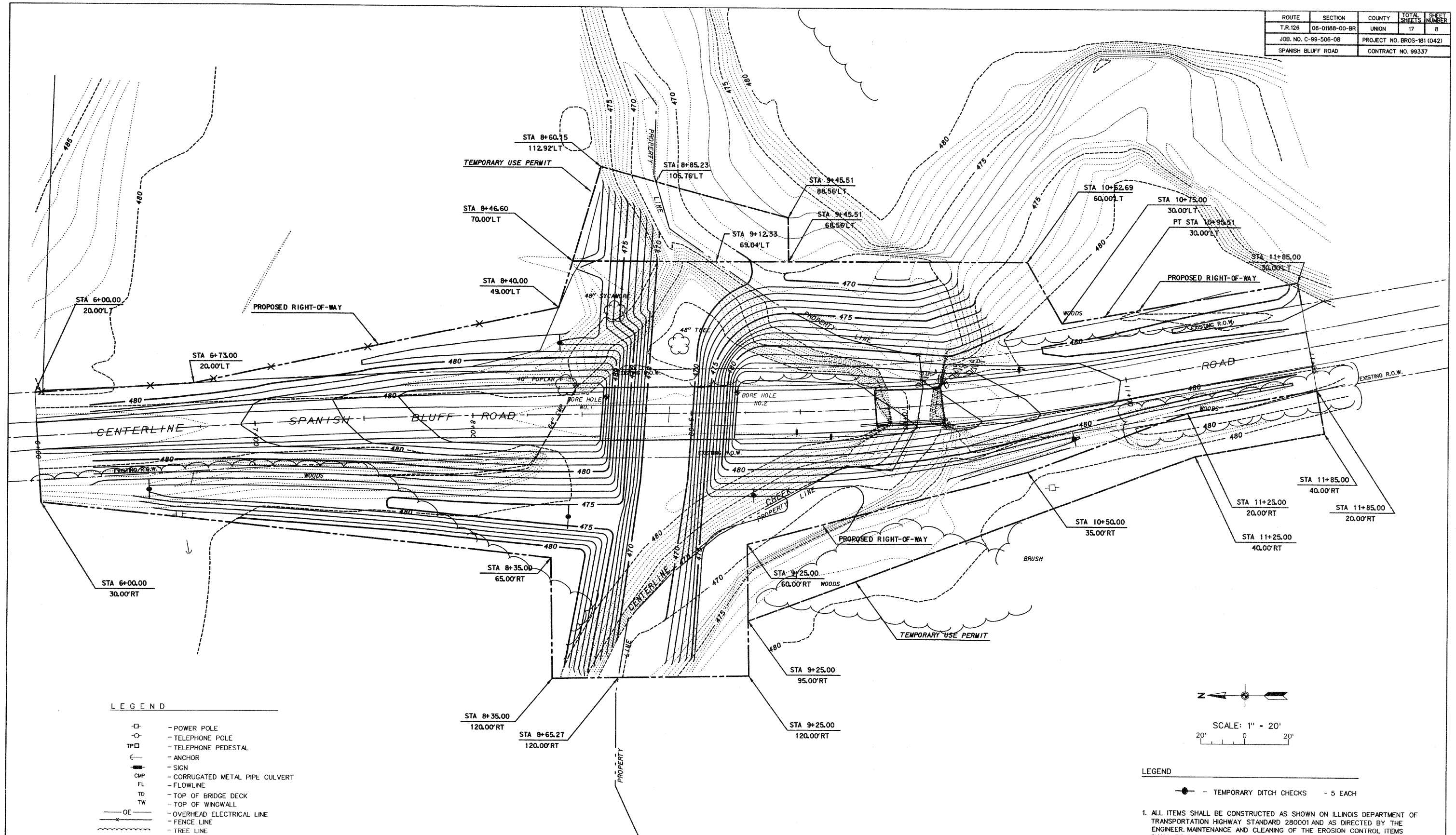
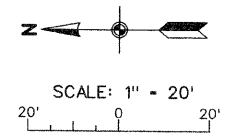


ROUTE	SECTION	COUNTY	TOTAL SHEETS	SHEET NUMBER
T.R.126	06-01188-00-BR	UNION	17	8
JOB. NO. C-99-508-08		PROJECT NO. BROS-181 (042)		
SPANISH BLUFF ROAD		CONTRACT NO. 99337		



LEGEND

□	- POWER POLE
○	- TELEPHONE POLE
TP□	- TELEPHONE PEDESTAL
⊖	- ANCHOR
■	- SIGN
CMP	- CORRUGATED METAL PIPE CULVERT
FL	- FLOWLINE
TD	- TOP OF BRIDGE DECK
TW	- TOP OF WINGWALL
— OE —	- OVERHEAD ELECTRICAL LINE
— X —	- FENCE LINE
—	- TREE LINE
---	- EXISTING RIGHT-OF-WAY LINE
- - -	- PROPOSED RIGHT-OF-WAY LINE
.....	- EXISTING CONTOUR
..... 570	- PROPOSED FINISH GRADE
..... 570	- PROPOSED CONTOUR
⊕ B1-S	- BORING W/ DESIGNATION



- LEGEND**
- - TEMPORARY DITCH CHECKS - 5 EACH
1. ALL ITEMS SHALL BE CONSTRUCTED AS SHOWN ON ILLINOIS DEPARTMENT OF TRANSPORTATION HIGHWAY STANDARD 280001 AND AS DIRECTED BY THE ENGINEER. MAINTENANCE AND CLEANING OF THE EROSION CONTROL ITEMS SHALL BE INCLUDED IN THE RESPECTIVE EROSION CONTROL PAY ITEM.
 2. THE LOCATIONS FOR ADDITIONAL TEMPORARY DITCH CHECKS AND PERIMETER EROSION BARRIER WILL BE DETERMINED IN THE FIELD BY THE ENGINEER DURING CONSTRUCTION.
 3. SEE STORM WATER PREVENTION PLAN (SWPPP) BDE 2342 INCLUDED IN SPECIAL PROVISIONS.