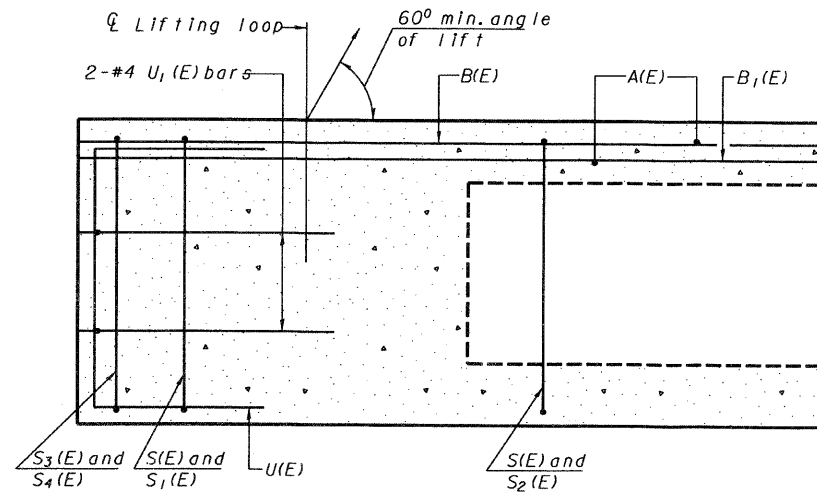
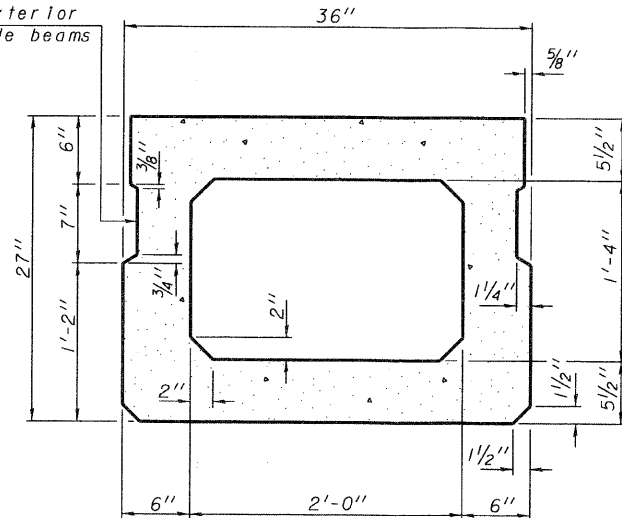


ROUTE	SECTION	COUNTY	TOTAL SHEETS	SHEET NUMBER
T.R. 126	06-0188-00-BR	UNION	17	10
JOB NO. C-99-506-08		PROJECT NO. BROS-181 (042)		
SPANISH BLUFF ROAD		CONTRACT NO. 99337		

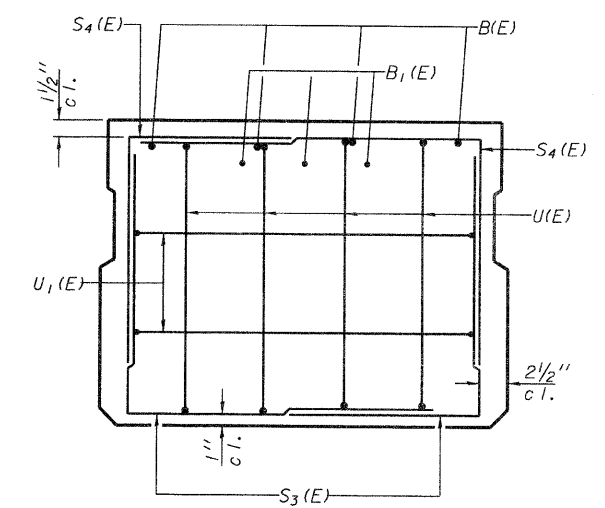


SECTION C-C

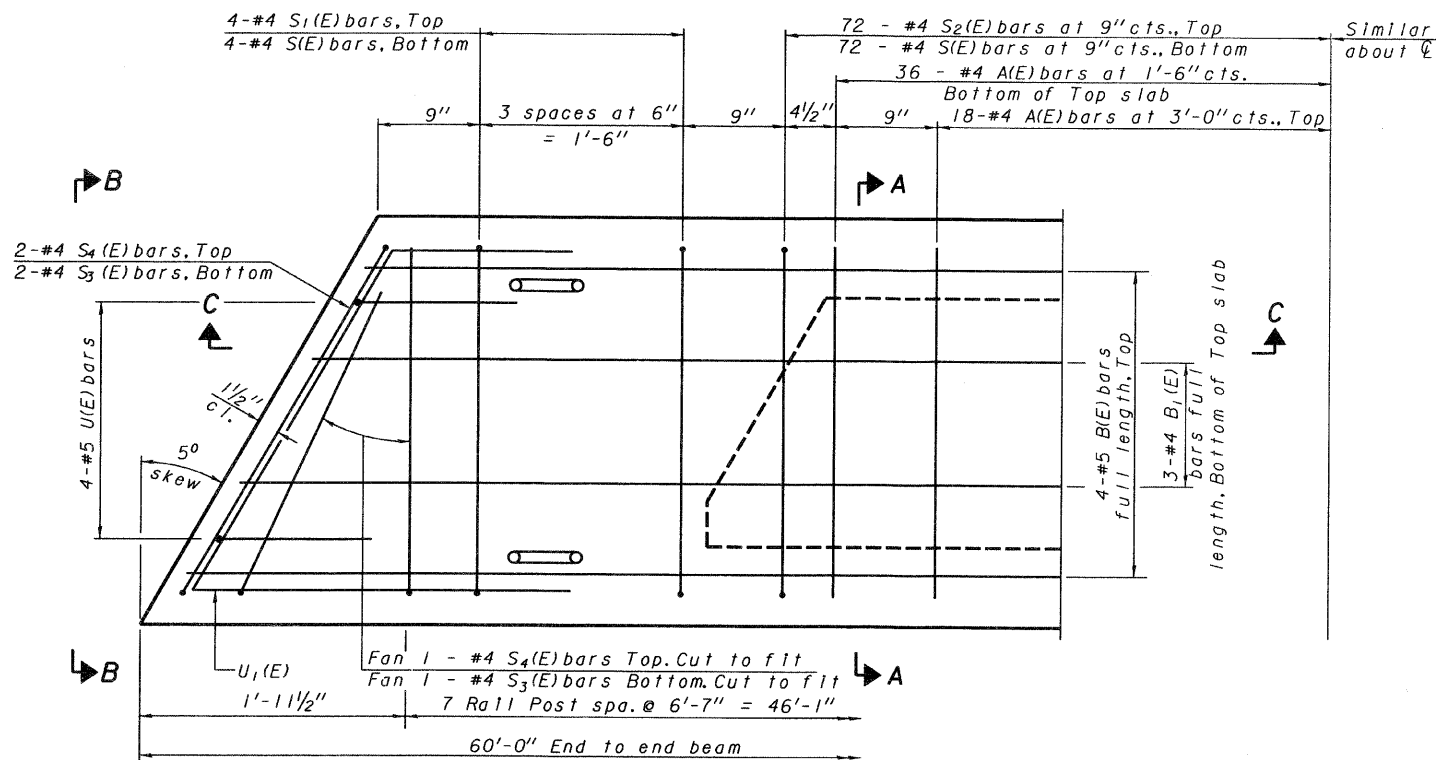
Omit key on exterior face of outside beams



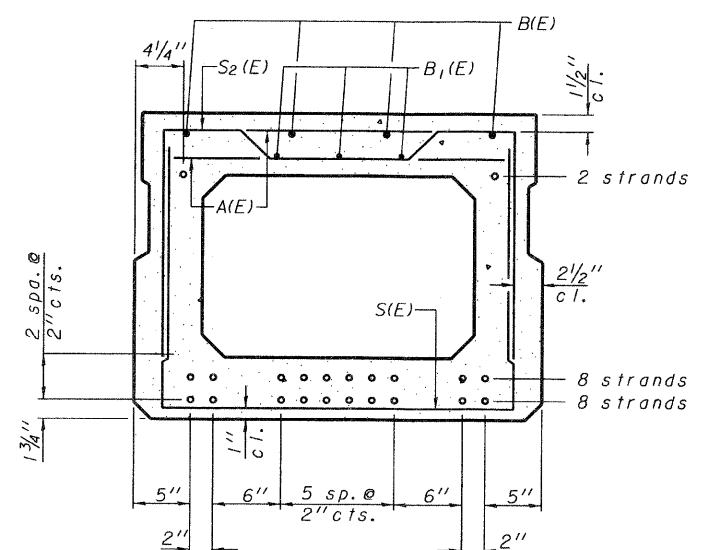
SECTION A-A
(Showing dimensions)



VIEW B-B



PLAN VIEW



SECTION A-A
(Showing reinforcement and permissible strand locations)
Note: Place the number of strands specified in each row symmetrically about the centerline of beam in the permissible strand locations shown.

BAR LIST
ONE BEAM ONLY

(For information only)

Bar	No.	Size	Length	Shape
A(E)	18	#4	2'-7"	—
B(E)	12	#5	21'-8"	—
B1(E)	9	#4	21'-8"	—
S(E)	80	#4	6'-5"	┌
S1(E)	8	#4	5'-11"	┌
S2(E)	72	#4	6'-2"	┌
S3(E)	2	#4	4'-7"	┌
S4(E)	2	#4	4'-4"	┌
U(E)	8	#5	4'-6"	┌
U1(E)	4	#4	5'-0"	┌

Note: See sheet 13 of 19 for additional details and Bill of Material.

Note: Spacing of S(E) and S2(E) bars may be adjusted up to 4" in the immediate area of the transverse tie diaphragms to miss the block outs for the transverse ties.

MINIMUM BAR LAP

#4 bar = 2'-0"
#5 bar = 2'-6"