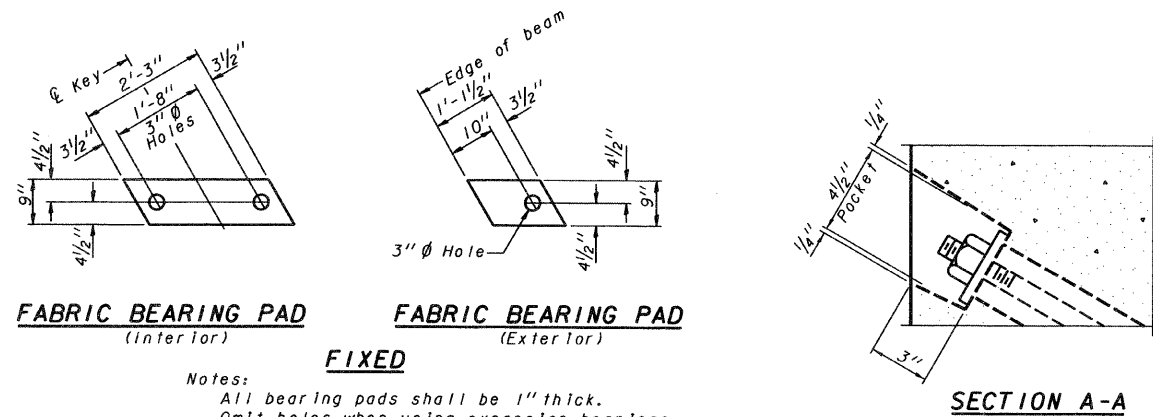
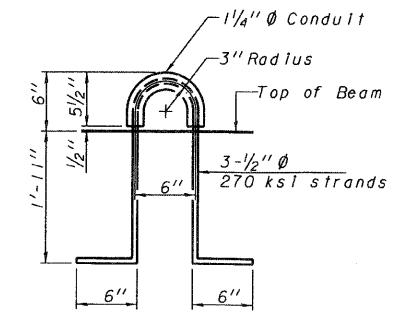
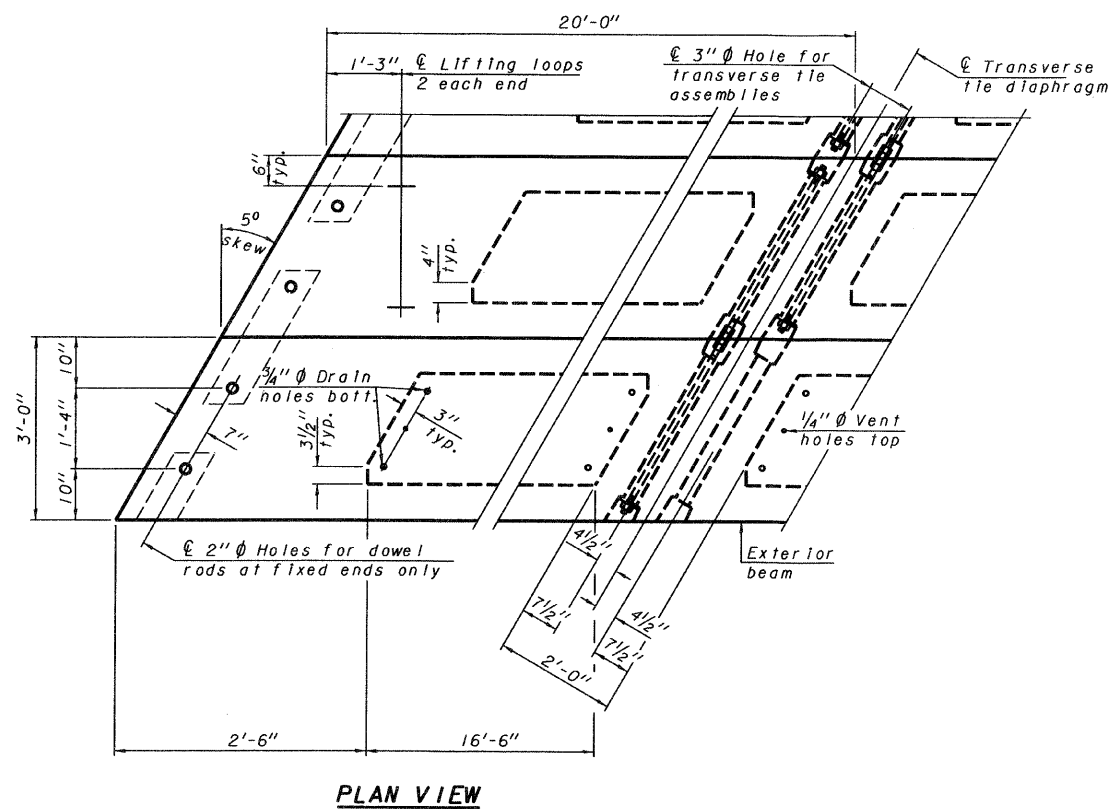
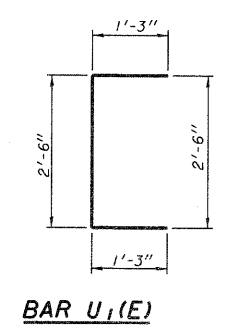
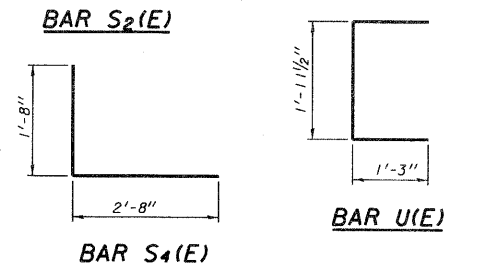
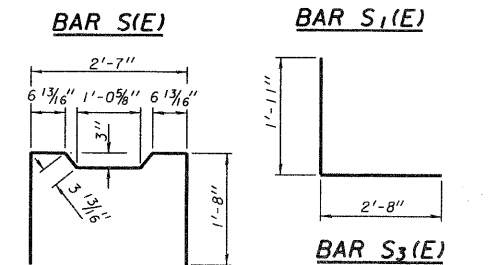
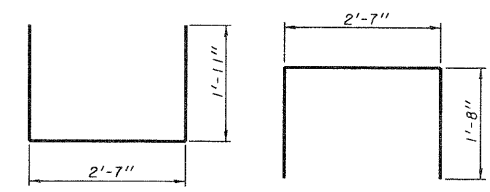
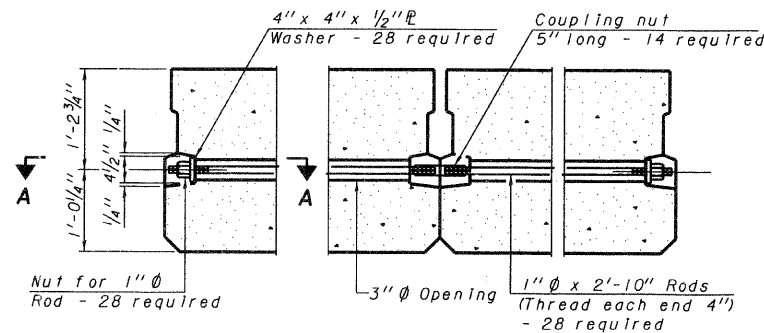


| | | | | |
|---------------------|---------------|----------------------------|--------------|--------------|
| ROUTE | SECTION | COUNTY | TOTAL SHEETS | SHEET NUMBER |
| T.R. 126 | 06-0188-00-BR | UNION | 17 | 11 |
| JOB NO. C-99-506-08 | | PROJECT NO. BROS-181 (042) | | |
| SPANISH BLUFF ROAD | | CONTRACT NO. 99337 | | |



Notes:
 All bearing pads shall be 1" thick.
 Omit holes when using expansion bearings.
 Expansion bearing pad shall be bonded to the substructure.



Note: Connect beams in pairs with the transverse tie configuration shown.

NOTES

- Prestressing steel shall be uncoated high strength, low relaxation 7-wire strand, Grade 270. The nominal diameter shall be 1/2" and the nominal cross-sectional area shall be 0.153 sq. in.
- The 1" rods in the transverse tie assembly shall be tightened to a snug fit and the threads set. Pockets on exterior faces of bridge shall be filled with grout after transverse tie assembly is in place.
- Reinforcement bars shall conform to ASTM A 706, Grade 60. (See Special Provisions).
- Two 1/8" fabric adjusting shims of the dimensions of the exterior bearing pad shall be provided for each bearing pad location.
- A minimum 2 1/2" lifting pin shall be used to engage the lifting loops during handling.
- Corrosion Inhibitor, per Article 1020.05(b)(12) and 1021.06 of the Standard Specifications, shall be used in the concrete for precast prestressed concrete deck beams.
- Compressive strength of prestressed concrete, f'c, shall be 6000 psi.
- Compressive strength of prestressed concrete at release, f'cl, shall be 5000 psi.

BILL OF MATERIAL

| | | |
|---|---------|------|
| Precast Prestressed Conc. Deck Bms. (27" depth) | Sq. Ft. | 1440 |
|---|---------|------|

| |
|---|
| UNION COUNTY HIGHWAY DEPARTMENT UNION COUNTY, ILLINOIS |
| SPANISH BLUFF ROAD |
| 27" X 36" PCC DECK BEAM DETAILS |