

HOLCOMB FOUNDATION ENGINEERING INC.
 P.O. Box 88 618-529-5262
 Carbondale, Il. 62903 618-457-8991 fax Page 1 of 1

Bridge Foundation Boring Log

Project: H-08008 Bridge: _____ Date: 1/25/08
 Section: 06-01188-00-BR Station: _____
 Route: Spanish Bluff Rd Bored by: D. Russell
 County: Union Checked By: J. Holcomb

Boring No. 1	Station	Offset	Surface Water Elev.			Ground Water Elev.			Upon Completion		
			Elevation	N	Qu tsf	Elevation	N	Qu tsf	Elevation	N	Qu tsf
Ground Surface	481.45	0									
Brown Clayey SILT (A-4)											
		4	0.7S	25				456.45	100/6	2.5S	9
		5	1.1S	29							
		2	0.6S	19							
	472.45										
Brown Mottled Gray Clayey SILT (A-4)		wh	0.3B	27							
	469.45	100/6	--	20							
Gray LIMESTONE (boulder)											
	467.45										
Gray Silty CLAY (A-6) with Limestone Boulders and Cobbles		28	--	16							
	464.45	137	3.8S	11							
Gray SHALE											
		100/6	4.5S	10							
		100/5	--	9							

N = Standard Penetration Test Blows per foot to drive 2" O.D. Split Spoon Sampler 12" with a 140 lbs. hammer falling 30"

Qu = Unconfined Compressive Strength in tons/sq.ft.
 w = Water Content - percentage of oven dry weight - %
 P = Penetrometer

B = Bulge Failure
 S = Shear Failure
 E = Estimated Value

HOLCOMB FOUNDATION ENGINEERING INC.
 P.O. Box 88 618-529-5262
 Carbondale, Il. 62903 618-457-8991 fax Page 1 of 1

Bridge Foundation Boring Log

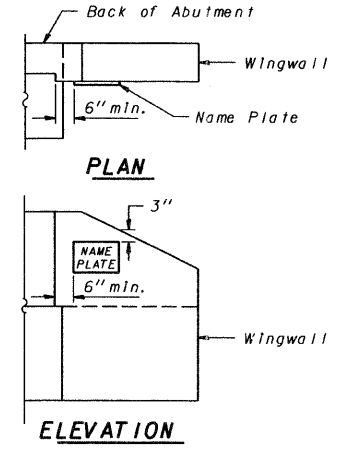
Project: H-08008 Bridge: _____ Date: 1/25/08
 Section: 06-01188-00-BR Station: _____
 Route: Spanish Bluff Rd Bored by: D. Russell
 County: Union Checked By: J. Holcomb

Boring No. 2	Station	Offset	Surface Water Elev.			Ground Water Elev.			Upon Completion		
			Elevation	N	Qu tsf	Elevation	N	Qu tsf	Elevation	N	Qu tsf
Ground Surface	481.55	0									
Brown Clayey SILT (A-4)											
		3	0.6S	25				457.05	100/6	5.2S	10
		2	0.5S	27							
	475.05										
Brown Clayey SILT (A-4) with sand		1	0.6S	28							
		wh	--	27							
	470.55										
Brown Mottled Gray Silty CLAY (A-6) with sand		5	0.7S	5							
	467.55										
Gray SHALE		31	2.5S	44							
	464.55	78	--	10							
Gray SHALE											
		100/6	4.5S	10							
		100/6	--	11							

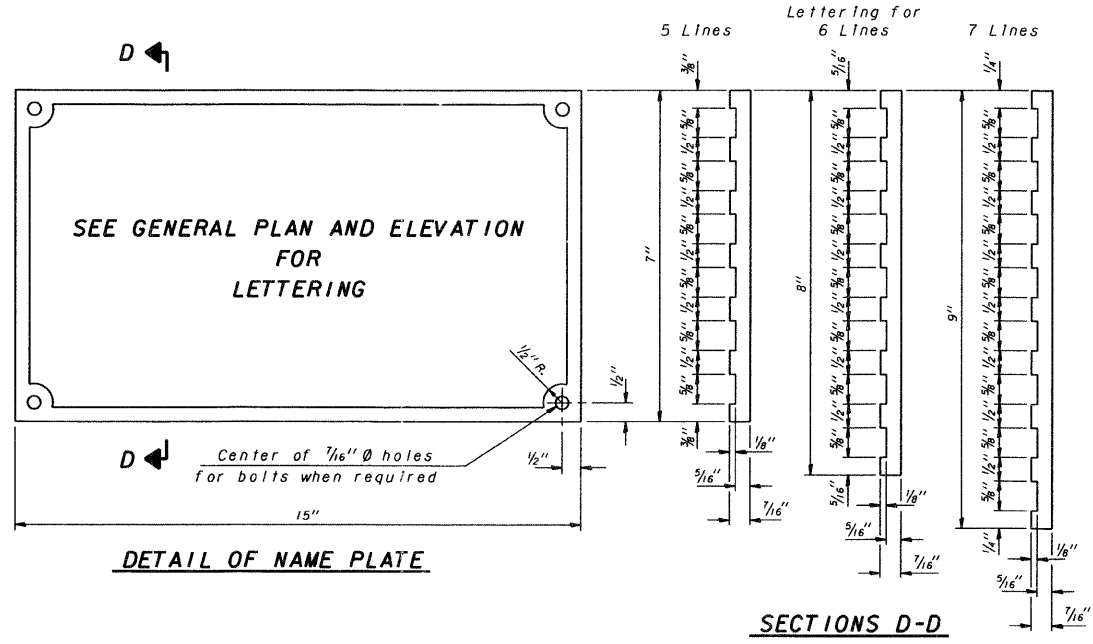
N = Standard Penetration Test Blows per foot to drive 2" O.D. Split Spoon Sampler 12" with a 140 lbs. hammer falling 30"

Qu = Unconfined Compressive Strength in tons/sq.ft.
 w = Water Content - percentage of oven dry weight - %
 P = Penetrometer

B = Bulge Failure
 S = Shear Failure
 E = Estimated Value



LOCATION OF NAME PLATE



DETAIL OF NAME PLATE

SECTIONS D-D

Material: Best quality brass or bronze.
 Border & Lettering: Raised 1/16 Inch. Square cut and not tapered. Top surface polished.
 Fastenings: Four lugs at least three inches long, cast on back of plate.