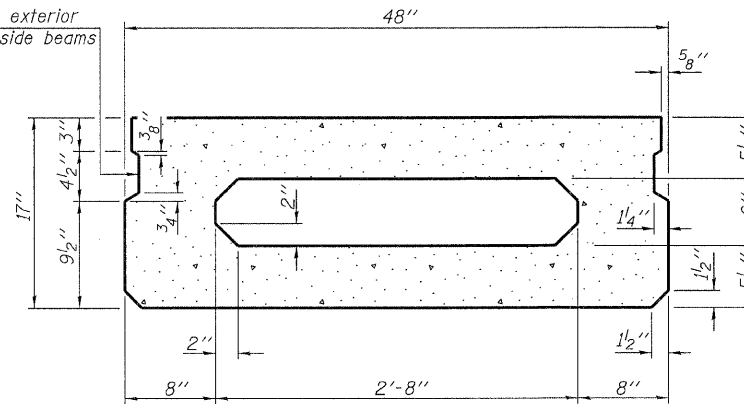
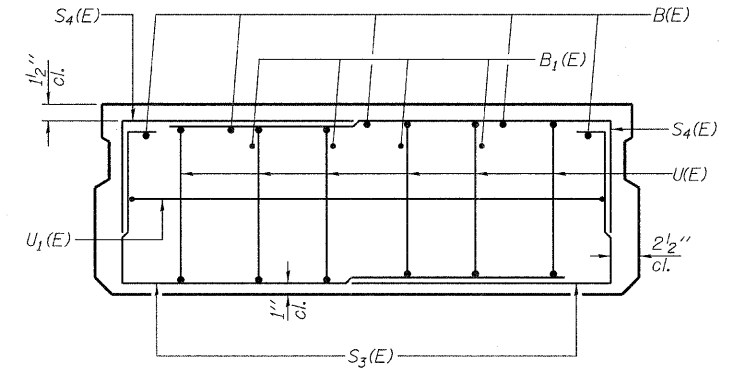


SECTION C-C

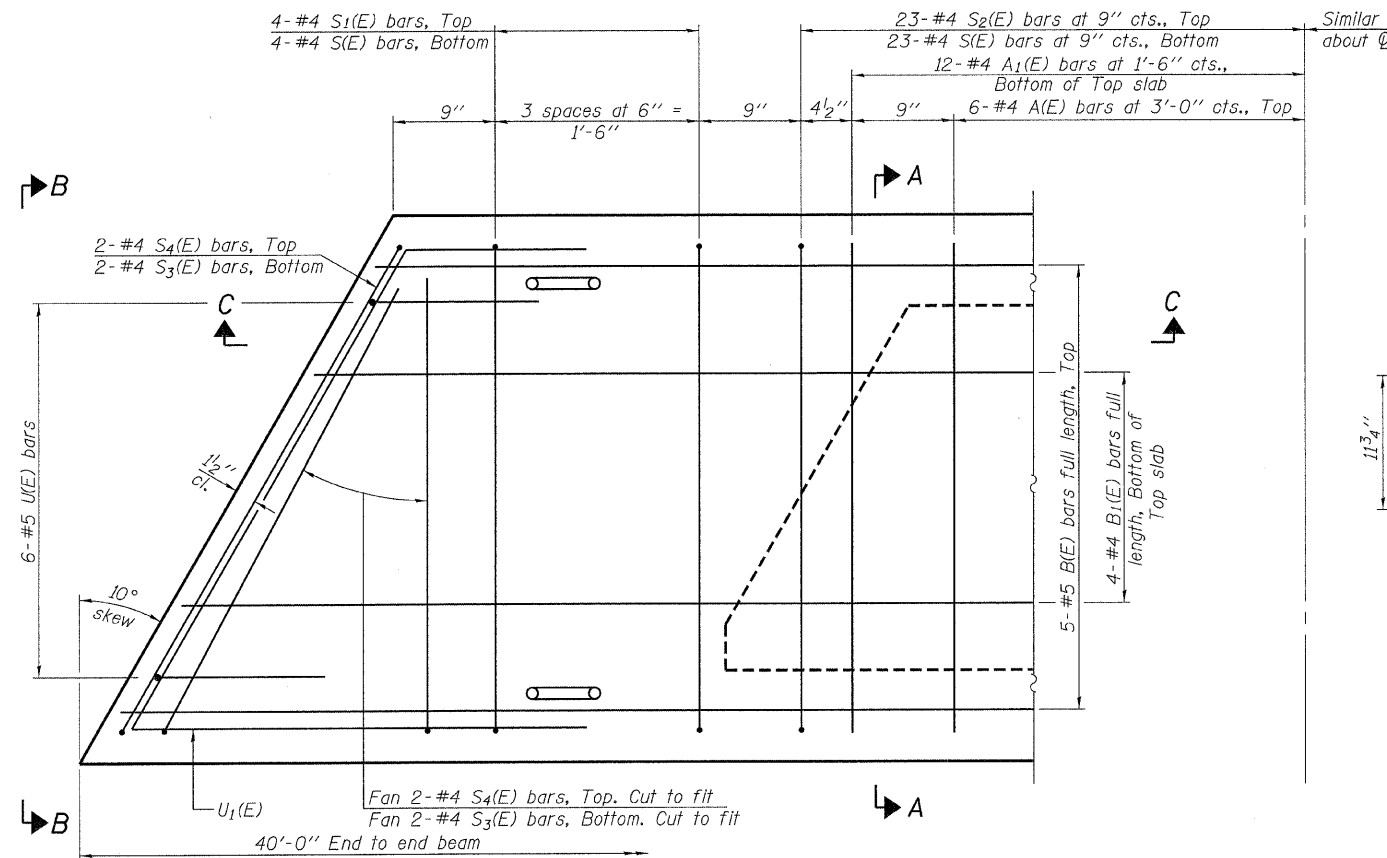
Omit key on exterior face of outside beams



SECTION A-A  
(Showing dimensions)

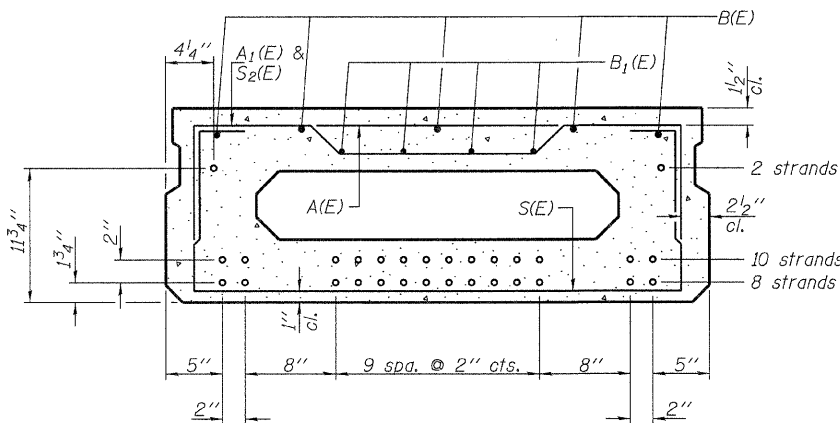


VIEW B-B



PLAN VIEW

Note: Spacing of S(E) and S2(E) bars may be adjusted up to 4" in the immediate area of the transverse tie diaphragms to miss the block outs for the transverse ties.



SECTION A-A

(Showing reinforcement and permissible strand locations)  
Note: Place the number of strands specified in each row symmetrically about the centerline of beam in the permissible strand locations shown.

BAR LIST  
ONE BEAM ONLY  
(For information only)

Bar	No.	Size	Length	Shape
A(E)	12	#4	3'-7"	—
A1(E)	24	#4	3'-10"	—
B(E)	5	#5	39'-8"	—
B1(E)	4	#4	39'-8"	—
S(E)	54	#4	6'-9"	┌
S1(E)	8	#4	5'-3"	┌
S2(E)	46	#4	5'-6"	┌
S3(E)	8	#4	4'-4"	┌
S4(E)	8	#4	3'-7"	┌
U(E)	12	#5	3'-8"	┌
U1(E)	2	#4	6'-8"	┌

Note: See sheet 11 of 12 for additional details and Bill of Material.

MINIMUM BAR LAP

#4 bar = 2'-0"  
#5 bar = 2'-6"

DESIGNED	A.S.L.
CHECKED	S.W.M.
DRAWN	D.A.B.
CHECKED	S.W.M.

PD-1748-L

11-1-09

**HAMPTON, LENZINI AND RENWICK, INC.**  
 CIVIL ENGINEERS - STRUCTURAL ENGINEERS - LAND SURVEYORS  
 3085 STEVENSON DRIVE, SUITE 201  
 SPRINGFIELD, ILLINOIS 62703  
 217.546.3400 www.hlrengineering.com

184.000989  
 ILLINOIS PROFESSIONAL DESIGN FIRM LS / PE / SE CORPORATION

PROJECT NUMBER: 09.0150.130 DATE: 02/07/11

T.R.	SECTION	COUNTY	TOTAL SHEETS	SHEET NO.
272	08-02136-00-BR	FRANKLIN	16	10
BENTON ROAD DISTRICT		CONTRACT NO. 99426		
FED. ROAD DIST. NO.		ILLINOIS FED. AID PROJECT BROS-0055(061)		

SUPERSTRUCTURE  
 17" X 48" PPC DECK BEAM  
 STRUCTURE NO. 028-3406