

STATE OF ILLINOIS  
DEPARTMENT OF TRANSPORTATION

F.A.I. RTE.	SECTION	COUNTY	TOTAL SHEETS	SHEET NO.
I-80	D2 BC 2023-1	ROCK ISLAND	4	1
		ILLINOIS	CONTRACT NO. 64R80	

INDEX OF SHEETS

1. COVER SHEET, INDEX OF SHEETS, STATE STANDARDS
2. SUMMARY OF QUANTITIES
3. SCHEDULE OF QUANTITIES
4. LOCATION MAP ROCK ISLAND COUNTY

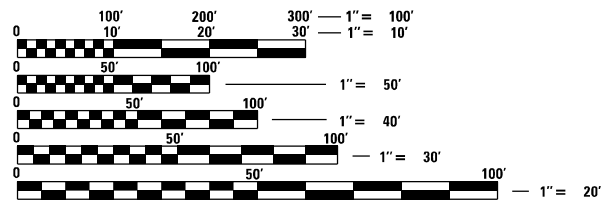
PROPOSED  
HIGHWAY PLANS

F.A.I. 80 (I-80)  
SECTION: D2 BC 2023-01  
PROJECT: NHPP-SXEU(241)  
TYPE of IMPROVEMENT: BRIDGE WASHING  
ROCK ISLAND COUNTY

C-92-104-22

STATE STANDARDS

- 701101-05 OFF-ROAD OPERATIONS, MULTILANE, 15'(4.5m) TO 24'(600mm) FROM PAVEMENT EDGE
- 701400-11 APPROACH TO LANE CLOSURE, FREEWAY/EXPRESSWAY
- 701406-13 LANE CLOSURE, FREEWAY/EXPRESSWAY, DAY OPERATIONS ONLY
- 701411-09 LANE CLOSURE, MULTILANE, AT ENTRANCE OR EXIT RAMP FOR SPEEDS ≥ 45 MPH
- 701901-08 TRAFFIC CONTROL DEVICES
- 720011-01 METAL POSTS FOR SIGNS, MARKERS AND DELINEATORS
- 728001-01 TELESCOPING STEEL SIGN SUPPORT
- 729001-01 APPLICATIONS OF TYPES A & B METAL POSTS (FOR SIGNS & MARKERS)

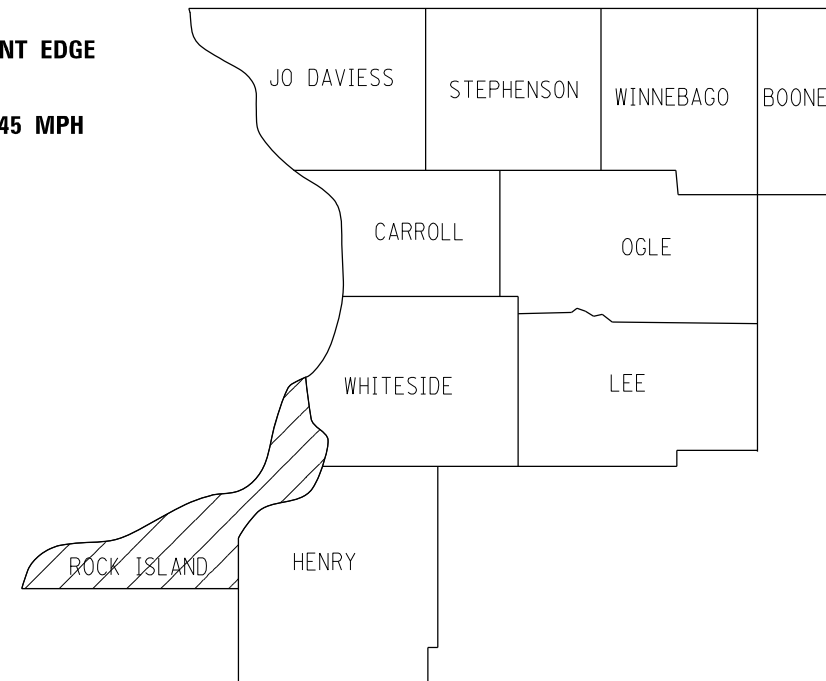


FULL SIZE PLANS HAVE BEEN PREPARED USING STANDARD ENGINEERING SCALES, REDUCED SIZED PLANS WILL NOT CONFORM TO STANDARD SCALES. IN MAKING MEASUREMENTS ON REDUCED PLANS, THE ABOVE SCALES MAY BE USED.

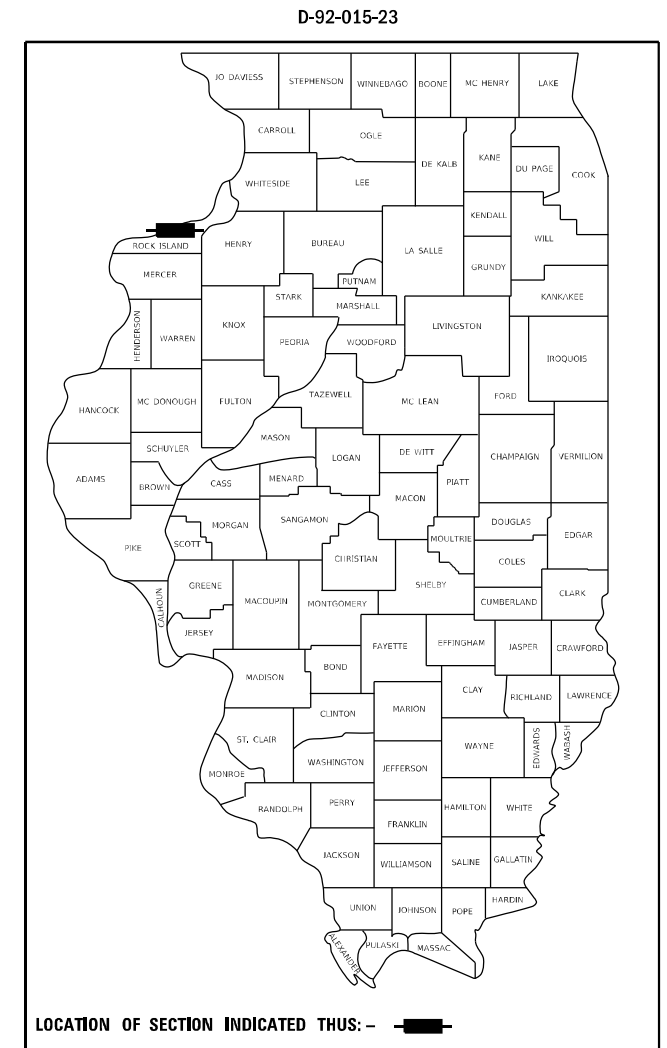
J.U.L.I.E.  
JOINT UTILITY LOCATION INFORMATION FOR EXCAVATION  
1-800-892-0123  
OR 811

PROJECT ENGINEER: DAVID DOSS (815) 284-5416  
PROJECT MANAGER: MAHMOUD ETEMADI (815) 284-5393

CONTRACT NO. 64R80



LOCATION OF SECTION INDICATED THIS: - [shaded box]



LOCATION OF SECTION INDICATED THIS: - [solid black box]

STATE OF ILLINOIS  
DEPARTMENT OF TRANSPORTATION

SUBMITTED Aug 15, 20 22  
*David Doss*  
REGIONAL ENGINEER

October 14, 2022  
*Scott A. Etkin*  
ENGINEER OF DESIGN AND ENVIRONMENT

October 14, 2022  
*Stephen M. Smith*  
DIRECTOR OF HIGHWAYS PROJECT IMPLEMENTATION

PRINTED BY THE AUTHORITY  
OF THE STATE OF ILLINOIS

# SUMMARY OF QUANTITIES

Paycode	Description	Units	Total	ILLINOIS	IOWA
				URBAN NHPP > 200k 90% FEDERAL 10% STATE  0047	URBAN 100% STATE  0047
59200101	BRIDGE WASHING NO. 1	EACH	1	0.5	0.5
59200102	BRIDGE WASHING NO. 2	EACH	1	0.5	0.5
67100100	MOBILIZATION	L SUM	1	0.5	0.5
70100420	TRAFFIC CONTROL AND PROTECTION, STANDARD 701411	EACH	2	1	1
70100700	TRAFFIC CONTROL AND PROTECTION, STANDARD 701406	L SUM	1	0.5	0.5
70200100	NIGHTTIME WORK ZONE LIGHTING	L SUM	1	0.5	0.5

MODEL: Default  
 FILE: Mainfile  
 P:\Ildot-cw-bentley.com\PROJECTS\Documents\DOT Offices\District 2\Projects\Operations\Bridge Section\Bridge Washing over Mississippi River 1\1\CAD\64R80-sh-cove.dgn

USER NAME = David.Doss	DESIGNED - _____	REVISED - _____
PLOT SCALE = 40.0000 ' / in.	CHECKED - _____	REVISED - _____
PLOT DATE = Jul-11-2022 06:22:44 AM	DATE - _____	REVISED - _____

**STATE OF ILLINOIS  
DEPARTMENT OF TRANSPORTATION**

**SUMMARY OF QUANTITIES**

SCALE: \_\_\_\_\_ SHEET \_\_\_\_ OF \_\_\_\_ SHEETS STA. \_\_\_\_\_ TO STA. \_\_\_\_\_

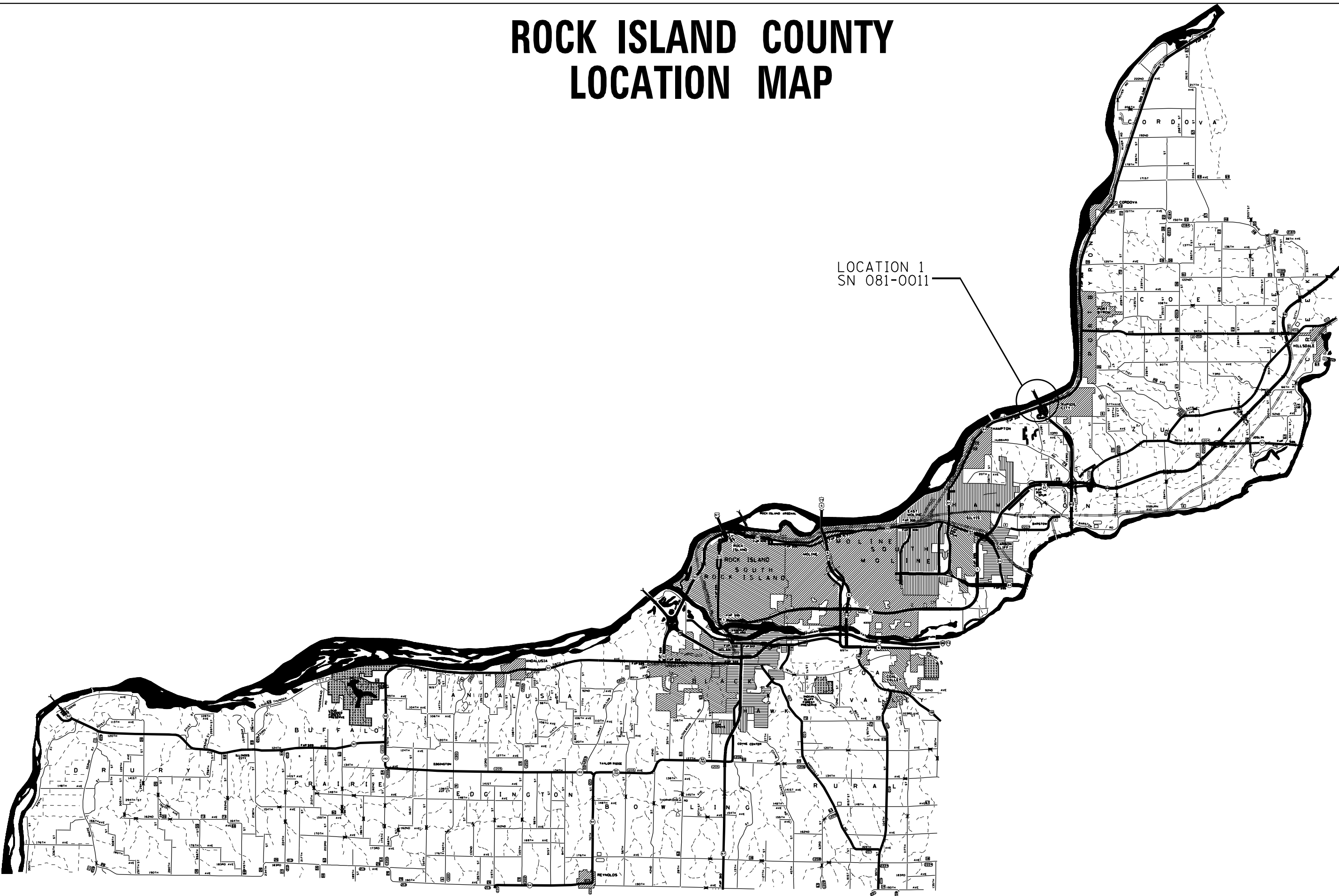
F.A.I. RTE.	SECTION	COUNTY	TOTAL SHEETS	SHEET NO.
I-80	D2 BC 2023-1	ROCK ISLAND	4	2
CONTRACT NO. 64R80				
ILLINOIS FED. AID PROJECT				

# SCHEDULE OF QUANTITIES

Pay Item Spring 2023	SN	Feature Crossed	Facility Carried	Bridge Location	Traffic Control
BRIDGE WASHING NO. 1	081-0011	Mississippi River	FAI 80 (I-80)	Near LeClaire Iowa	701400, 701406, 701411
Pay Item Fall 2023	SN	Feature Crossed	Facility Carried	Bridge Location	
BRIDGE WASHING NO. 2	081-0011	Mississippi River	FAI 80 (I-80)	Near LeClaire Iowa	701400, 701406, 701411

MODEL: Default  
 FILE: \\naulst-cw-bea-fwy.com\P\W\DOT\Documents\DOT Office\District 2\Project\Operations\Bridge Section\Bridge Washing Contracts\2023\64R80 Bridge Washing over Mississippi River (1)\CAD\64R80-sh-curve.dgn

# ROCK ISLAND COUNTY LOCATION MAP



LOCATION 1  
SN 081-0011

MODEL: C:\p\ref\h...  
 FILE: M:\MIF...  
 MODEL: C:\p\ref\h...  
 FILE: M:\MIF...

USER NAME = David.Doss	DESIGNED - _____	REVISED - _____
	DRAWN - _____	REVISED - _____
PLOT SCALE = 40,0000 * / in.	CHECKED - _____	REVISED - _____
PLOT DATE = Jul-11-2022 06:23:07 AM	DATE - _____	REVISED - _____

**STATE OF ILLINOIS  
DEPARTMENT OF TRANSPORTATION**

**ROCK ISLAND COUNTY  
LOCATION MAP**

SCALE: \_\_\_\_\_ SHEET \_\_\_\_\_ OF \_\_\_\_\_ SHEETS STA. \_\_\_\_\_ TO STA. \_\_\_\_\_

F.A.I. RTE.	SECTION	COUNTY	TOTAL SHEETS	SHEET NO.
I-80	D2 BC 2023-1	ROCK ISLAND	4	4
CONTRACT NO. 64R80				
ILLINOIS FED. AID PROJECT				