

STATE OF ILLINOIS
DEPARTMENT OF TRANSPORTATION

PROPOSED
HIGHWAY PLANS

VARIOUS ROUTES
DIST 8 WEED SPRAYING 2023-1
WEED SPRAYING
VARIOUS COUNTIES

INDEX OF SHEETS

1. COVER SHEET, INDEX OF SHEETS, MAP
2. HIGHWAY STANDARDS, SPRAY SCHEDULE, AND COMMITMENTS
3. SUMMARY OF QUANTITIES
- 4.-7. OMISSIONS/NO SPRAY SITES

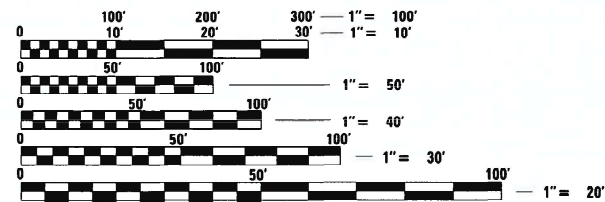
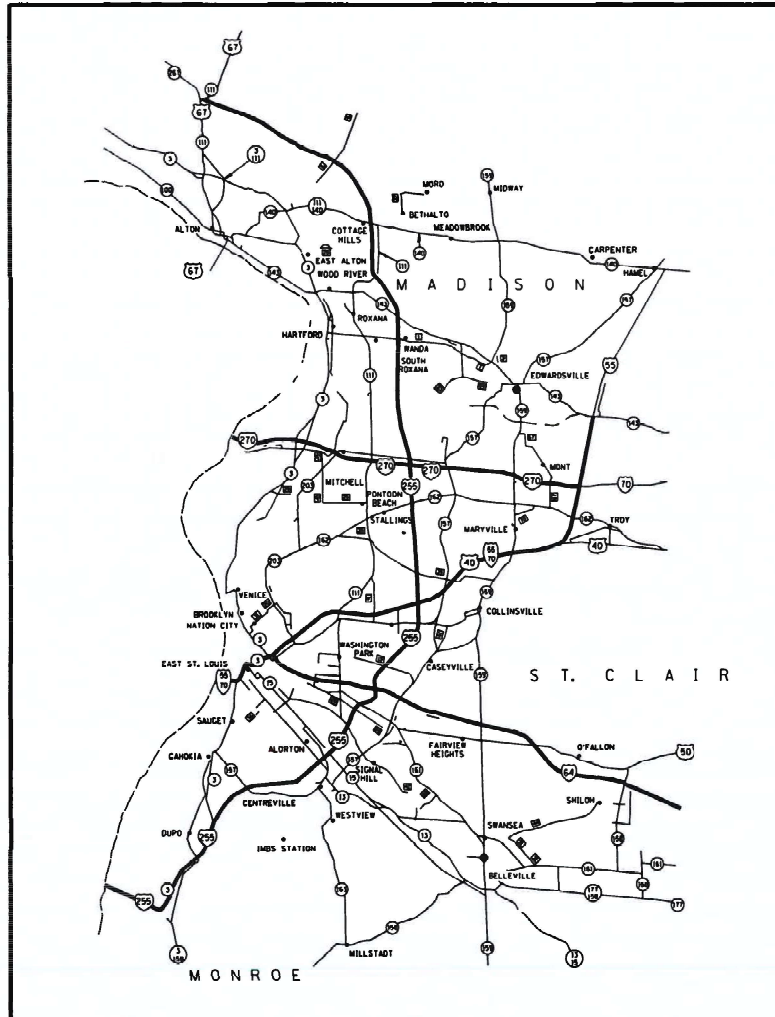
F.A. RTE.	SECTION	COUNTY	TOTAL SHEETS	SHEET NO.
-	**	VARIOUS	7	1
		ILLINOIS	CONTRACT NO. 76R44	

* VARIOUS
** DIST 8 WEED SPRAYING 2023-1

D-98-088-22



C-98-120-22



FULL SIZE PLANS HAVE BEEN PREPARED USING STANDARD ENGINEERING SCALES. REDUCED SIZED PLANS WILL NOT CONFORM TO STANDARD SCALES. IN MAKING MEASUREMENTS ON REDUCED PLANS, THE ABOVE SCALES MAY BE USED.

J.U.L.I.E.
JOINT UTILITY LOCATION INFORMATION FOR EXCAVATION
1-800-892-0123
OR 811

PROJECT ENGINEER: CHERYL KEPLAR
SQUAD CONTACT: TONI MANN
PROJECT MANAGER: JEFF ABEL
CONTRACT NO. 76R44

STATE OF ILLINOIS
DEPARTMENT OF TRANSPORTATION

SUBMITTED Aug. 9, 2022
[Signature] REGIONAL ENGINEER

October 14, 2022
[Signature] ENGINEER OF DESIGN AND ENVIRONMENT

October 14, 2022
[Signature] DIRECTOR OF HIGHWAYS PROJECT IMPLEMENTATION

PRINTED BY THE AUTHORITY
OF THE STATE OF ILLINOIS

COMMITMENTS
NONE

STANDARDS

000001-08
001006
701001-02
701006-05
701101-05
701106-02
701301-04
701426-09
701901-08

DISTRICT 8 WEED SPRAYING 2023-1				
COUNTY	ROUTE	MILES	2023	2024
			ACRES	ACRES
MADISON	FAI 55/70	30	182	182
	FAI 270	22	133	133
	FAI 255*	21	127	127
	ROUTE 255*	52	315	315
	FAI 55	20	121	121
ST. CLAIR	FAI 64	26	158	158
	FAI 255*	35	212	212
MONROE	FAI 255*	20	121	121
TOTAL		226	2740	

50' SWATH
*TO INCLUDE MEDIANS WHERE FEASIBLE

IT IS ESTIMATED THAT THE CONTRACTOR WILL NEED 55 GALLONS OF "METHOD", OR APPROVED EQUIVALENT, 55 GALLONS OF "MILESTONE", OR APPROVED EQUIVALENT, AND 30 POUNDS OF "ESCORT", OR APPROVED EQUIVALENT FOR HERBICIDE SPRAYING. OFF ROAD AND ON ROAD QUANTITIES ARE APPROXIMATE AND ARE SUBJECT TO CHANGE.

REV. - MS

* VARIOUS
** DIST 8 WEED SPRAYING 2023-1

MODEL: Default
FILE: M:\MS\p\ulidect-pw-bentley.com\PROJECTS\DOT_Offices\District_8\Projects\DIST 8 WEED SPRAYING 2023-1\CAD\data\CAD\sheet\generate.dgn

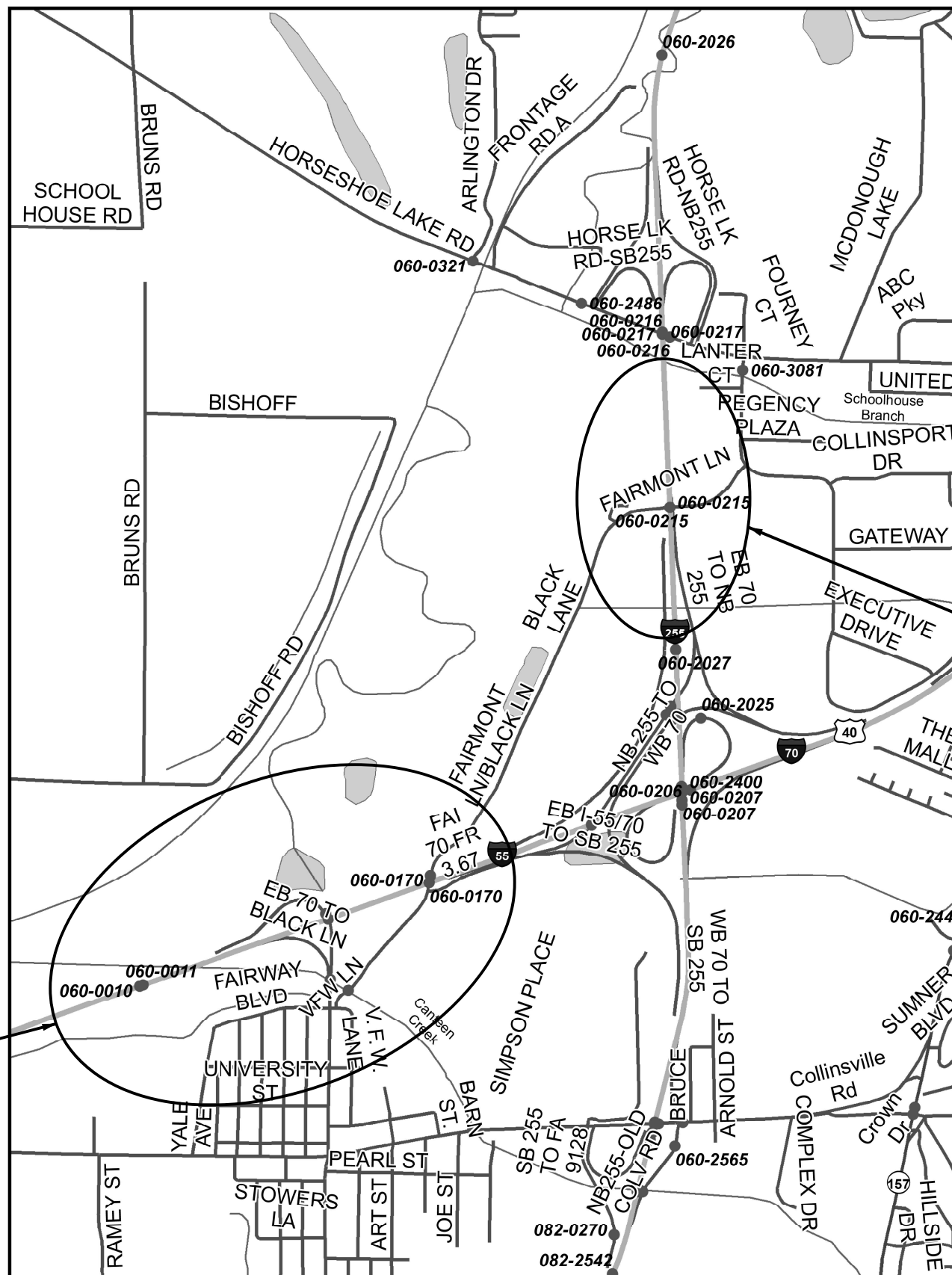
USER NAME = lewiska	DESIGNED -	REVISED -	STATE OF ILLINOIS DEPARTMENT OF TRANSPORTATION	HIGHWAY STANDARDS, SPRAY SCHEDULE, AND COMMITMENTS	F.A. RTE.	SECTION	COUNTY	TOTAL SHEETS	SHEET NO.	
PLOT SCALE = 100.0000 ' / in.	DRAWN -	REVISED -			*	**	VARIOUS	7	2	
PLOT DATE = 7/12/2022	CHECKED -	REVISED -			CONTRACT NO. 76R44					
	DATE -	REVISED -			SCALE:	SHEET OF SHEETS	STA. TO STA.	ILLINOIS FED. AID PROJECT		

MODEL: Default
 FILE NAME: p:\ultra-cw-bee-fwy.com\PIV\DOT\Documents\DOT_offices\Dir\dr. 8\Project\0876844\CAD\Drawings\0876844-ctb-500.dwg

CODE NO.	ITEM	UNIT	TOTAL QUANTITY	CONSTR. CODE
				100% STATE
				0031
				URBAN
67100100	MOBILIZATION	L SUM	1	1
K0012950	HERBICIDE SPRAYING	ACRE	2740	2740

- VARIOUS
- DIST 8 WEED SPRAYING 2023-1

USER NAME = leviska	DESIGNED -	REVISED -	STATE OF ILLINOIS DEPARTMENT OF TRANSPORTATION	SUMMARY OF QUANTITIES				F.A. RTE.	SECTION	COUNTY	TOTAL SHEETS	SHEET NO.
PLOT SCALE = 100,0000 ' / in.	DRAWN -	REVISED -						*	**	VARIOUS	7	3
PLOT DATE = 7/12/2022	CHECKED -	REVISED -		SCALE: SHEET OF SHEETS STA. TO STA.				CONTRACT NO. 76R44				
	DATE -	REVISED -		ILLINOIS FED. AID PROJECT								



DO NOT SPRAY

DO NOT SPRAY

MADISON COUNTY
LEVEE LAKE
SECTION 36, T3N-R9W

- VARIOUS
- ** DIST 8 WEED SPRAYING 2023-1

MODEL: D:\default
 FILE: NAME: p:\ddict-new\bedruy.com\PIV\DOT\Documents\DOT_offices\Dir\dr_8\Project\0876844\CADD\Sheet\0876844_rh-ctb-1b.dgn

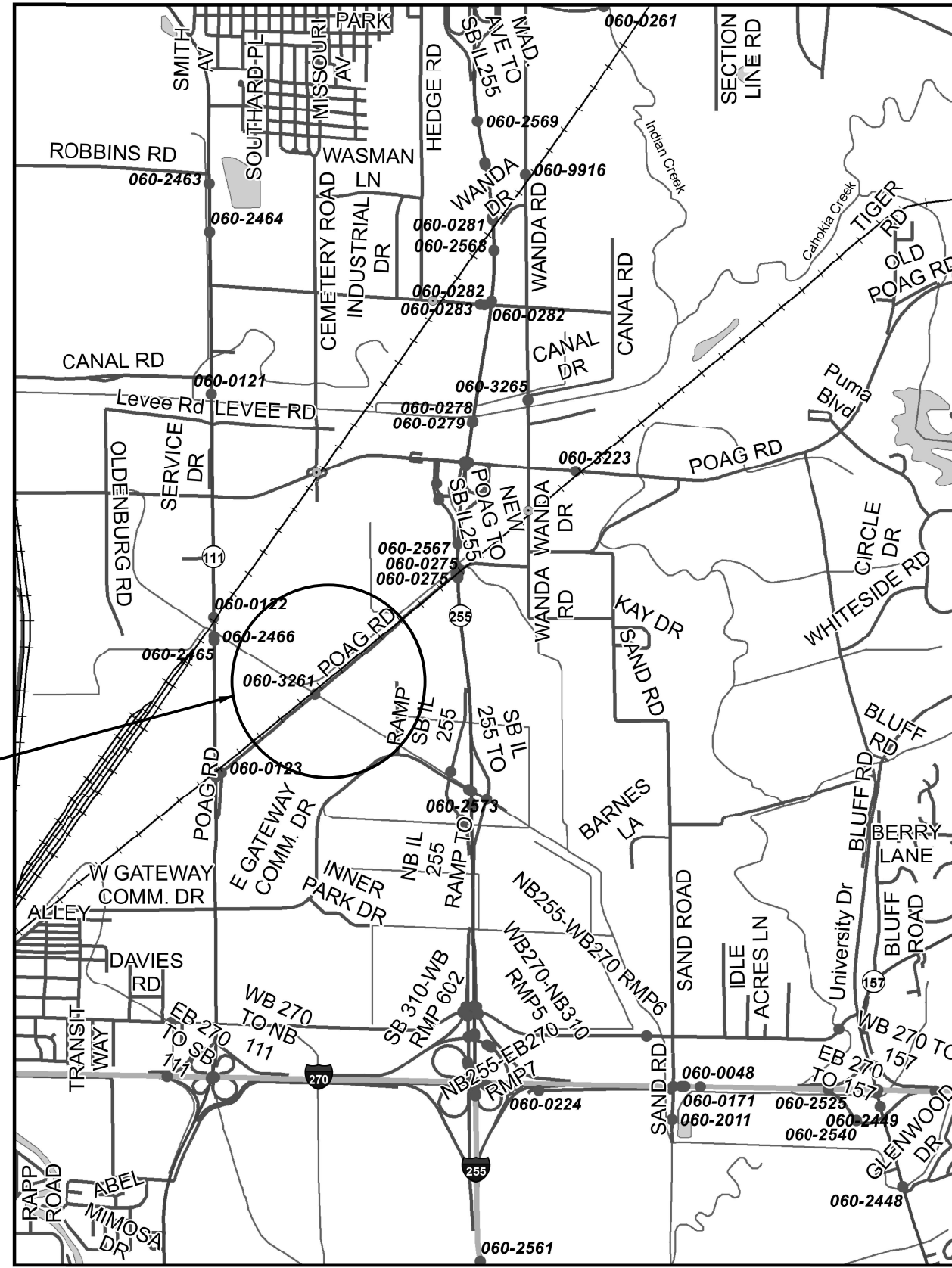
USER NAME = leviska	DESIGNED -	REVISED -
PLOT SCALE = 100,0000' / in.	DRAWN -	REVISED -
PLOT DATE = 7/12/2022	CHECKED -	REVISED -
	DATE -	REVISED -

**STATE OF ILLINOIS
DEPARTMENT OF TRANSPORTATION**

SCALE: SHEET OF SHEETS STA. TO STA.

**OMISSIONS NAMEOKI AND
GRANITE CITY TOWNSHIP**

F.A. RTE.	SECTION	COUNTY	TOTAL SHEETS	SHEET NO.
*	**	VARIOUS	7	4
		CONTRACT NO. 76R44		
ILLINOIS FED. AID PROJECT				



DO NOT SPRAY

MADISON COUNTY
POAG R.R. PRAIRIE
SECTION 24, T4N-R9W

- VARIOUS
- DIST 8 WEED SPRAYING 2023-1

MODEL: Default
 FILE: 3dmap.ctb
 PROJECT: I:\Projects\10876844\CADD\10876844\CADD\10876844.ctb

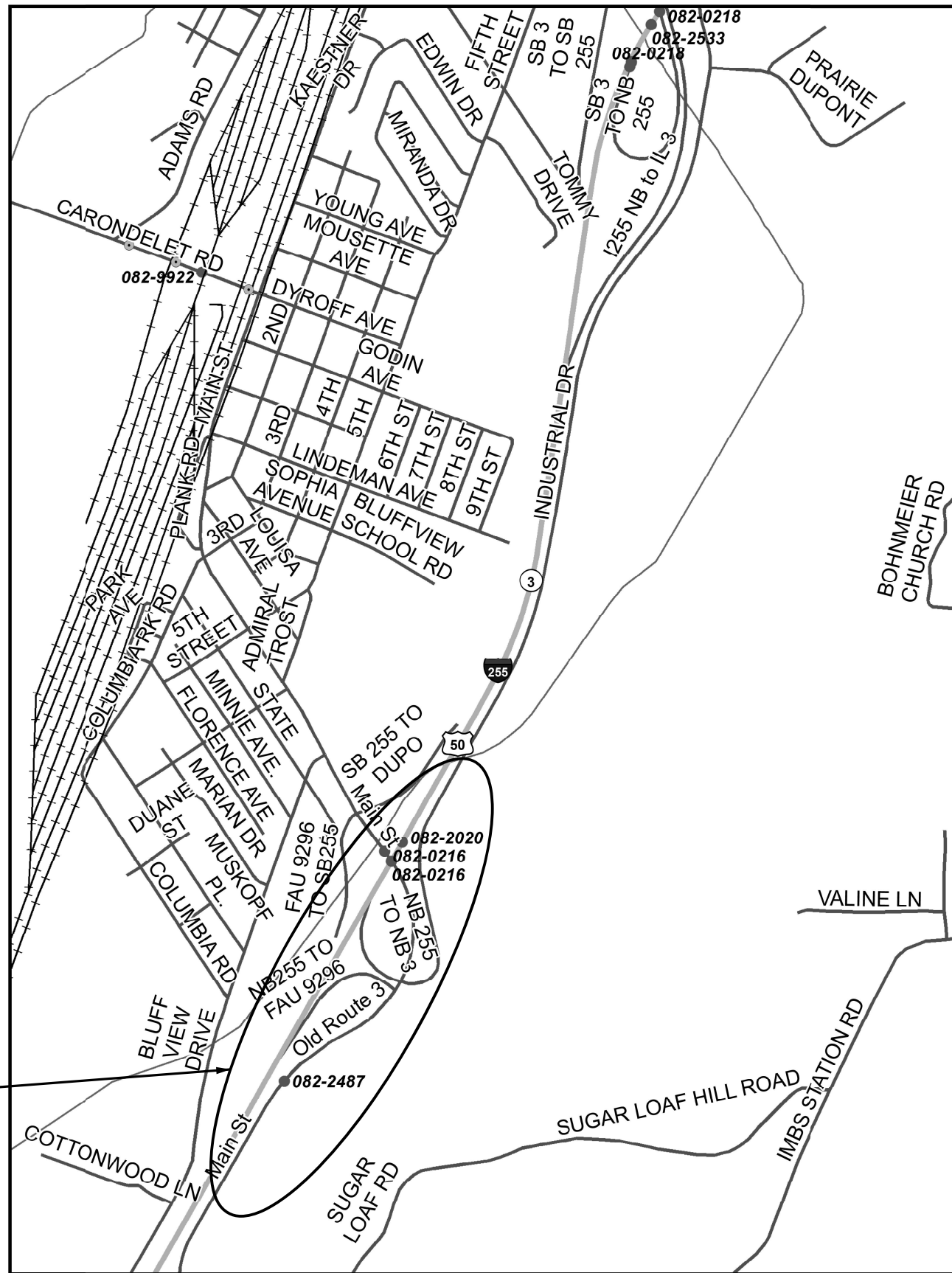
USER NAME = leviska	DESIGNED -	REVISED -
	DRAWN -	REVISED -
PLOT SCALE = 100,0000' / in.	CHECKED -	REVISED -
PLOT DATE = 7/12/2022	DATE -	REVISED -

**STATE OF ILLINOIS
DEPARTMENT OF TRANSPORTATION**

**OMISSONS CHOUTEAU &
GRANITE CITY TOWNSHIP**

SCALE: SHEET OF SHEETS STA. TO STA.

F.A. RTE.	SECTION	COUNTY	TOTAL SHEETS	SHEET NO.
**	**	VARIOUS	7	5
CONTRACT NO. 76R44				
ILLINOIS FED. AID PROJECT				



DO NOT SPRAY

ST. CLAIR COUNTY
 DUPO PRAIRIE/SUGAR LOAF PRAIRIE
 SECTION 27 & 28, T1N-R10W

- VARIOUS
- DIST 8 WEED SPRAYING 2023-1

MODEL: P:\default...
 FILE: 082-2487...
 PROJECT: 082-2487...
 DRAWN: 082-2487...
 CHECKED: 082-2487...
 DATE: 082-2487...

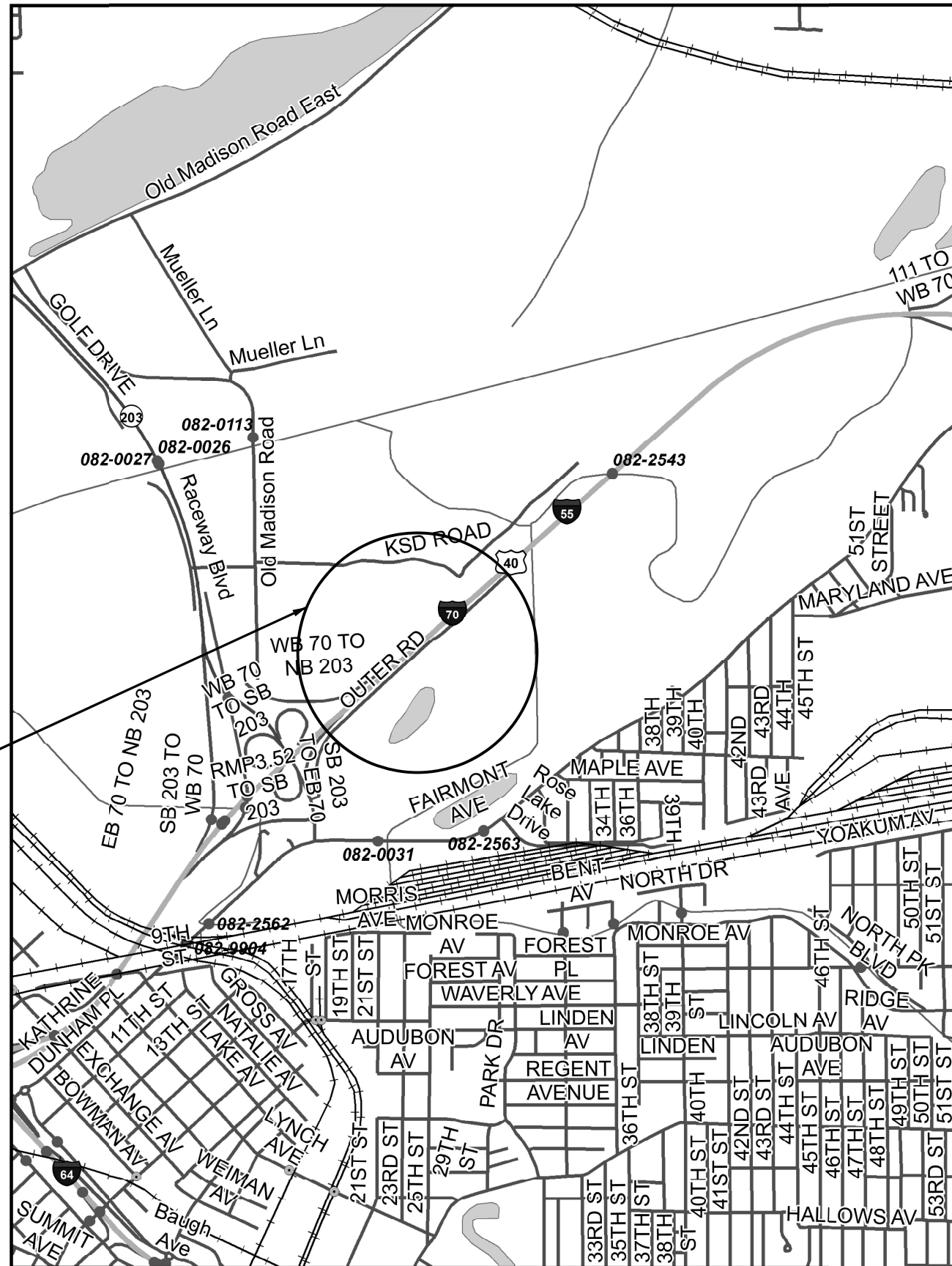
USER NAME = leviska	DESIGNED -	REVISED -
PLOT SCALE = 100,0000' / in.	DRAWN -	REVISED -
PLOT DATE = 7/12/2022	CHECKED -	REVISED -
	DATE -	REVISED -

STATE OF ILLINOIS
 DEPARTMENT OF TRANSPORTATION

OMISSIONS
 SUGAR LOAF TOWNSHIP

SCALE: SHEET OF SHEETS STA. TO STA.

F.A. RTE.	SECTION	COUNTY	TOTAL SHEETS	SHEET NO.
-	**	VARIOUS	7	6
			CONTRACT NO. 76R44	
ILLINOIS FED. AID PROJECT				



DO NOT SPRAY

ST. CLAIR COUNTY
FAIRMONT CITY SITE
T1N-R9W

- VARIOUS
- DIST 8 WEED SPRAYING 2023-1

MODEL: Default
 FILE NAME: p:\iludct-cw-bead-fv.com\p\11001\Documents\11001_offices\Dir\dr. E\Project\0876844\CADD\Sheet\0876844-sh-1-bn.dgn

USER NAME = leviska	DESIGNED -	REVISED -
	DRAWN -	REVISED -
PLOT SCALE = 100,0000' / in.	CHECKED -	REVISED -
PLOT DATE = 7/12/2022	DATE -	REVISED -

**STATE OF ILLINOIS
DEPARTMENT OF TRANSPORTATION**

**OMISSIONS
FAIRMONT CITY SITE**

SCALE: SHEET OF SHEETS STA. TO STA.

F.A. RTE.	SECTION	COUNTY	TOTAL SHEETS	SHEET NO.
*	**	VARIOUS	7	7
CONTRACT NO. 76R44				
ILLINOIS		FED. AID PROJECT		