

11-18-2022 LETTING ITEM 069

FOR INDEX OF SHEETS & STATE STANDARDS
SEE SHEET NO. 2

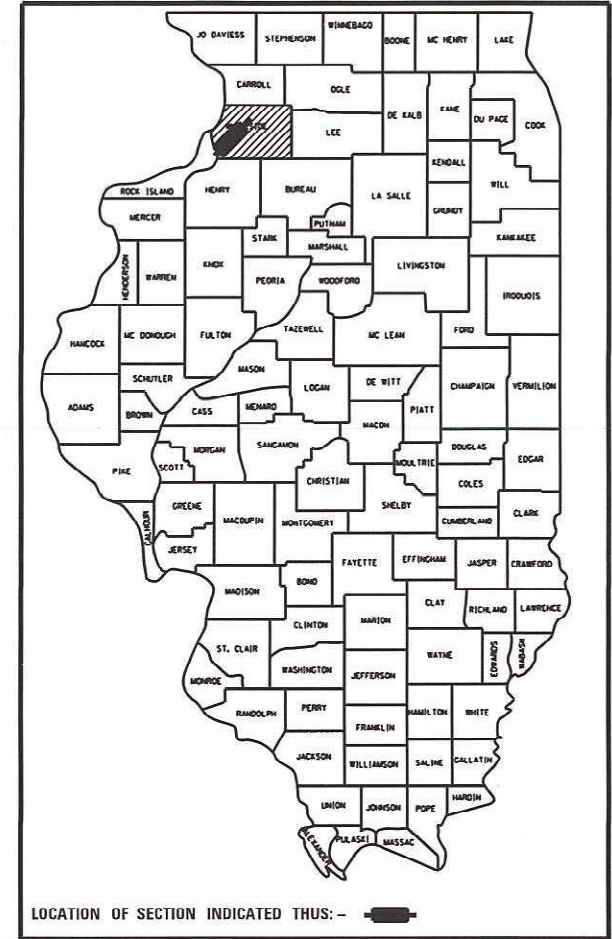
STATE OF ILLINOIS
DEPARTMENT OF TRANSPORTATION
DIVISION OF HIGHWAYS

**PROPOSED
HIGHWAY PLANS**

FAI 88 (I-88)
SECTION D2 PP 2023-05
WHITESIDE COUNTY
C-92-122-22

FAI RTE.	SECTION	COUNTY	TOTAL SHEETS	SHEET NO.
88	D2 PP 2023-05	WHITESIDE	4	1

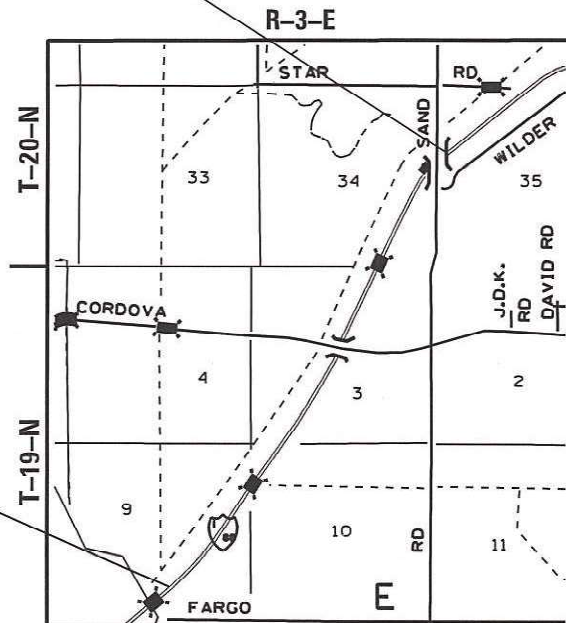
CONTRACT NO. 64S06
D-92-040-23



PROJECT ENGINEER: SCOTT KULLERSTRAND

SQUAD LEADER: LANCE NICKLAUS 815-284-5407

SECTION IMPROVEMENT ENDS
3.10 MILE NE



SECTION IMPROVEMENT BEGINS
AT COUNTY LINE

TOWNSHIP (SECTION):
ERIE (3, 9)
NEWTON (34)

J.U.L.I.E.
JOINT UTILITY LOCATION INFORMATION FOR EXCAVATION
1-800-892-0123

GROSS LENGTH OF PROJECT = 16,368 FT = 3.10 MILES
NET LENGTH OF PROJECT = 16,368 FT = 3.10 MILES

CONTRACT NO. 64S06

FAI 88 (I-88) SECTION D2 PP 2023-05 WHITESIDE COUNTY

STATE OF ILLINOIS
DEPARTMENT OF TRANSPORTATION
DIVISION OF HIGHWAYS

SUBMITTED August 22, 2022

[Signature]
REGION ENGINEER

October 14, 2022
[Signature]
ENGINEER OF DESIGN AND ENVIRONMENT

October 14, 2022
[Signature]
DIRECTOR OF HIGHWAYS PROJECT IMPLEMENTATION

PRINTED BY THE AUTHORITY
OF THE STATE OF ILLINOIS

INDEX

- 1 Cover Sheet
- 2 Index of Sheets / State Standards
- 3 Summary of Quantities
- 4 General Notes

STATE STANDARDS

- | | |
|-----------|----------------------------------------------------------------------------|
| 001001-02 | AREAS OF REINFORCEMENT BARS |
| 421001-03 | BAR REINFORCEMENT FOR CRC PAVEMENT |
| 442001-04 | CLASS A PATCHES |
| 701400-11 | APPROACH TO LANE CLOSURE, FREEWAY/EXPRESSWAY |
| 701401-13 | LANE CLOSURE, FREEWAY/EXPRESSWAY |
| 701406-13 | LANE CLOSURE, FREEWAY/EXPRESSWAY, DAY OPERATIONS ONLY |
| 701426-09 | LANE CLOSURE, MULTILANE, INTERMITTENT OR MOVING OPERATIONS, FOR SPEEDS > 4 |
| 701428-01 | TRAFFIC CONTROL, SETUP AND REMOVAL, FREEWAY/EXPRESSWAY |
| 701901-08 | TRAFFIC CONTROL DEVICES |
| 720011-01 | METAL POST FOR SIGNS, MARKERS AND DELINEATORS |
| 728001-01 | TELESCOPING STEEL SIGN SUPPORT |
| 729001-01 | APPLICATIONS OF TYPES A AND B METAL POST (FOR SIGNS & MARKERS) |

DISTRICT STANDARDS

- 34.1 Work Zone Sign Details

SUMMARY OF QUANTITIES

FAI 88 (I-88)
SECTION D2 PP 2023-05
Whiteside County
CONTRACT # 64S06
SHEET 3 OF 4

100% State
0006

CODE NO.	ITEM	UNIT	TOTAL QUANTITY
44200565	CLASS A PATCHES, TYPE II , 11"	SQ YD	1,002
44200569	CLASS A PATCHES, TYPE III , 11"	SQ YD	222
44200571	CLASS A PATCHES, TYPE IV, 11"	SQ YD	720
44213000	PATCHING REINFORCEMENT	SQ YD	1944
44213200	SAW CUT	FOOT	9636
44213204	TIE BARS 3/4"	EACH	312
67100100	MOBILIZATION	L SUM	1
70100700	TRAFFIC CONTROL AND PROTECTION, STANDARD 701406	L SUM	1
70100800	TRAFFIC CONTROL AND PROTECTION, STANDARD 701401	L SUM	1
70103815	TRAFFIC CONTROL SURVEILLANCE	CAL DAY	20

* Specialty Items

GENERAL NOTES

When laying out for patching, the minimum distance between new patches (saw cut to saw cut) shall be 15 feet. When patch spacing is less than 15 feet, the pavement between patches shall also be removed and replaced.

Any raised reflective pavement markers removed during the patching operation shall not be replaced.

FILE NAME = 64506 GN.DOCX	USER NAME =	DESIGNED - Engineering Systems	REVISED -	STATE OF ILLINOIS DEPARTMENT OF TRANSPORTATION	GENERAL NOTES	ROUTE	SECTION	COUNTY	TOTAL SHEETS	SHEET NO.	
		DRAWN -	REVISED -			FAI	D2 PP 2023-05	Whiteoak	4	4	
	PLOT SCALE =	CHECKED -	REVISED -			BB		CONTRACT NO. 64506			
	PLOT DATE = 6/7/2022 11:16 AM	DATE - 7/29/2021 10:36 AM	REVISED -			SCALE:	SHEET NO.	OF	SHEETS	STA.	TO STA.