

STATE OF ILLINOIS
DEPARTMENT OF TRANSPORTATION

F.A.P. RTE.	SECTION	COUNTY	TOTAL SHEETS	SHEET NO.
311	(3BB)CLV	LASALLE	26*	1
		ILLINOIS	CONTRACT NO. 66M51	

* 26 + 1 = 27 TOTAL SHEETS

INDEX OF SHEETS

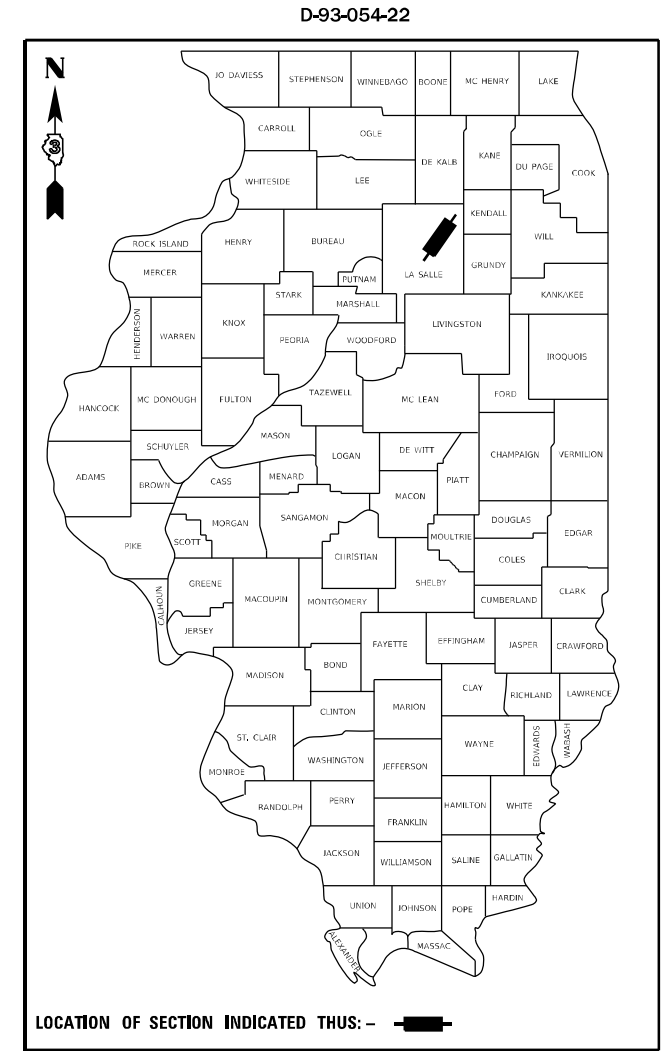
- 1 . COVER SHEET
- 2 . GENERAL NOTES
- 3 - 6 . SUMMARY OF QUANTITIES
- 7 . TYPICAL SECTIONS
- 9 . SCHEDULES
- 9 - 11 . TRAFFIC CONTROL AND PROTECTION, STANDARD 701321
- 12 - 20 A PROPOSED PLAN DETAILS FOR STRUCTURE NO. 050-2574
- 21 . PAVEMENT MARKING
- 22 . TEMPORARY INFORMATION SIGNING
- 23 . BORINGS
- 24 - 26 . CROSS SECTIONS

PROPOSED HIGHWAY PLANS

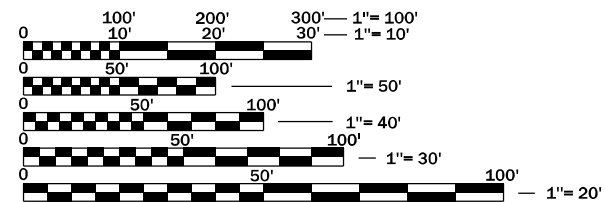
F.A.P. ROUTE 311 (IL 71)
SECTION (3BB)CLV
BOX CULVERT REPAIRS
LASALLE COUNTY
C-93-076-22

HIGHWAY STANDARDS

- 000001-08 STANDARD SYMBOLS, ABBREVIATIONS AND PATTERNS
- 001001-02 AREAS OF REINFORCEMENT BARS
- 001006 DECIMAL OF AN INCH AND OF A FOOT
- 280001-07 TEMPORARY EROSION CONTROL SYSTEMS
- 482006-03 HMA SHOULDER ADJACENT TO RIGID PAVEMENT
- 642006-01 SHOULDER RUMBLE STRIPS, 16 INCH
- 701001-02 OFF-ROAD OPERATIONS 2L, 2W, MORE THAN 15' AWAY
- 701006-05 OFF-ROAD OPERATIONS 2L, 2W, 15' TO 24" FROM PAVEMENT EDGE
- 701201-05 LANE CLOSURE, 2L, 2W, DAY ONLY, FOR SPEEDS ≥ 45 MPH
- 701301-04 LANE CLOSURE, 2L, 2W, SHORT TIME OPERATIONS
- 701311-03 LANE CLOSURE, 2L, 2W, MOVING OPERATIONS - DAY ONLY
- 701321-18 LANE CLOSURE, 2L, 2W, BRIDGE REPAIR, WITH BARRIER
- 701901-08 TRAFFIC CONTROL DEVICES
- 704001-08 TEMPORARY CONCRETE BARRIER
- 782006-01 GUARDRAIL AND BARRIER WALL REFLECTOR MOUNTING DETAILS



PROJECT LOCATION
STRUCTURE NO. 050-2574
CARRYING FAP 311 (IL 71) OVER A STREAM
APPROXIMATELY 2.47 MILES NORTH OF US ROUTE 52



FULL SIZE PLANS HAVE BEEN PREPARED USING STANDARD ENGINEERING SCALES. REDUCED SIZED PLANS WILL NOT CONFORM TO STANDARD SCALES. IN MAKING MEASUREMENTS ON REDUCED PLANS, THE ABOVE SCALES MAY BE USED.

J.U.L.I.E.
JOINT UTILITY LOCATION INFORMATION FOR EXCAVATION
1-800-892-0123
OR 811

PROJECT ENGINEER: YOGESH PATEL P.E.
UNIT CHIEF: RON WOODSHANK
DISTRICT 3 NO. (815) 434-6131
CONTRACT NO. 66M51



FUNCTIONAL CLASSIFICATION
RURAL OTHER PRINCIPAL ARTERIAL
F.A.P. ROUTE 311 (IL 71)
2021 ADT = 6,150
P.V. 87.0 % S.U. 3.2 % M.U. 9.8 %

STATE OF ILLINOIS
DEPARTMENT OF TRANSPORTATION

SUBMITTED August 31, 2022
Thomas Howard
REGIONAL ENGINEER

October 14, 2022
Scott A. Etkin
ENGINEER OF DESIGN AND ENVIRONMENT

October 14, 2022
Stephen M. Smith
DIRECTOR OF HIGHWAYS PROJECT IMPLEMENTATION

PRINTED BY THE AUTHORITY
OF THE STATE OF ILLINOIS

GENERAL NOTES

THE ENGINEER WILL BE THE SOLE JUDGE CONCERNING CURING TIME FOR THE VARIOUS HMA LIFTS.

THE FINISHED EARTHWORK SHALL HAVE A VEGETATION SUSTAINING SOIL COVERING THE TOP FOUR INCHES IN AREAS TO BE SEEDED OR SODDED. THE VEGETATION SUSTAINING SOIL REQUIRED WILL NOT BE PAID FOR SEPARATELY BUT WILL BE INCLUDED IN THE COST OF FURISHED EXCAVATION.

THE FOLLOWING RATES OF APPLICATION HAVE BEEN USED IN CALCULATING PLAN QUANTITIES:

GRANULAR MATERIALS	2.05	TONS / CU YD
HMA RESURFACING	112	LBS / SQ YD / IN
SHORT TERM PAVEMENT MARKING	10	FT /100 FT OF APPLICATION

MEMBERS OF JULIE KNOWN TO BE WITHIN THE LIMITS OF THE IMPROVEMENT ARE:

AMEREN ILLINOIS - (NORTH)
ATT - DISTRIBUTION
NICOR GAS

COMMITMENTS

HMA MIXTURE REQUIREMENT TABLE	
LOCATION(S):	ENTIRE PROJECT
MIXTURE USE(S):	HMA SHOULDER
BINDER GRADE (PG):	PG64-22
DESIGN AIR VOIDS:	4% @ N50
MIXTURE COMPOSITION: (MIXTURE GRADATION)	1L-19.0
FRICITION AGGREGATE:	
MIXTURE WEIGHT:	112.0 LB/SY/IN
QUALITY MANAGEMENT PROGRAM:	QC/QA
SUBLOT SIZE:	N/A
DENSITY TEST METHOD:	CORES
MATERIAL TRANSFER DEVISE REQUIRED	NO

STATE OF ILLINOIS
DEPARTMENT OF TRANSPORTATION
DISTRICT THREE
AS BUILT INFORMATION

STATE OF ILLINOIS
DEPARTMENT OF TRANSPORTATION
DISTRICT THREE

SUPERVISING CONSTRUCTION FIELD ENGINEER

PREPARED BY: _____
DISTRICT STUDIES & PLANS ENGINEER

RESIDENT ENGINEER / TECHNICIAN

DATE: _____

START & END DATES
OF CONSTRUCTION:

EXAMINED BY: _____
DISTRICT CONSTRUCTION ENGINEER

INSPECTORS: _____

DISTRICT MATERIALS ENGINEER

DISTRICT OPERATIONS ENGINEER

**STATE OF ILLINOIS
DEPARTMENT OF TRANSPORTATION**

GENERAL NOTES

F.A.P. RTE.	SECTION	COUNTY	TOTAL SHEETS	SHEET NO.
311	(3BB)CLV	LASALLE	26	2
			CONTRACT NO. 66M51	
		ILLINOIS FED. AID PROJECT		

SCALE: SHEET 1 OF 1 SHEETS STA. TO STA.

MODEL: Default
FILE NAME: p:\subject-raw-bee-fwy.com\FW\DOT\Documents\DOT Office\Dir\Dir: 3\Project\ID366M51\CADD\Date: D366M51_P1_ANS.dgn

CONSTRUCTION CODE
CONTRACT MAINTENANCE
100% STATE
BOX CULVERT
0004
S.N. 050-2574

CODE NO.	ITEM	UNIT	TOTAL QUANTITY	
20200100	EARTH EXCAVATION	CU YD	152	152
* 20201200	REMOVAL AND DISPOSAL OF UNSUITABLE MATERIAL	CU YD	28	28
20400800	FURNISHED EXCAVATION	CU YD	466	466
21400100	GRADING AND SHAPING DITCHES	FOOT	450	450
25000210	SEEDING, CLASS 2A	ACRE	0.12	0.12
25000400	NITROGEN FERTILIZER NUTRIENT	POUND	11	11
25000500	PHOSPHORUS FERTILIZER NUTRIENT	POUND	11	11
25000600	POTASSIUM FERTILIZER NUTRIENT	POUND	11	11
25100635	HEAVY DUTY EROSION CONTROL BLANKET	SQ YD	500	500
28000305	TEMPORARY DITCH CHECKS	FOOT	20	20
31101200	SUBBASE GRANULAR MATERIAL, TYPE B 4"	SQ YD	70	70
40200800	AGGREGATE SURFACE COURSE, TYPE B	TON	8	8
40600290	BITUMINOUS MATERIALS (TACK COAT)	POUND	14	14
44004250	PAVED SHOULDER REMOVAL	SQ YD	30	30

*= SPECIALTY ITEM

MODEL: Default
 FILE: M:\GIS\Projects\66M51\Drawings\DOT_Offices\Drawings\Project\66M51\CAD\Drawings\66M51_PLAN.dgn

USER NAME = ronald.woodshank	DESIGNED - RW	REVISED -
	DRAWN - RW	REVISED -
PLOT SCALE = 100.0000' / in.	CHECKED - YP	REVISED -
PLOT DATE = 8/31/2022	DATE - 2/14/2022	REVISED -

**STATE OF ILLINOIS
DEPARTMENT OF TRANSPORTATION**

SUMMARY OF QUANTITIES	
SCALE:	SHEET 1 OF 4 SHEETS STA. TO STA.

F.A.P. RTE.	SECTION	COUNTY	TOTAL SHEETS	SHEET NO.
311	(3BB)CLV	LASALLE	26	3
			CONTRACT NO. 66M51	
ILLINOIS FED. AID PROJECT				

CONSTRUCTION CODE
CONTRACT MAINTENANCE
100% STATE
BOX CULVERT
0004
S.N. 050-2574

CODE NO.	ITEM	UNIT	TOTAL QUANTITY	
48101200	AGGREGATE SHOULDERS, TYPE B	TON	42	42
48203100	HOT-MIX ASPHALT SHOULDERS	TON	20	20
50102400	CONCRETE REMOVAL	CU YD	62	62
50105220	PIPE CULVERT REMOVAL	FOOT	32	32
50200100	STRUCTURE EXCAVATION	CU YD	44	44
50300225	CONCRETE STRUCTURES	CU YD	58.6	58.6
50300255	CONCRETE SUPERSTRUCTURE	CU YD	9.2	9.2
50800205	REINFORCEMENT BARS, EPOXY COATED	POUND	13240	13240
50800530	MECHANICAL SPLICERS	EACH	88	88
52200010	TEMPORARY SHEET PILING	SQ FT	260	260
54002080	EXPANSION BOLTS 3/4 INCH X 18 INCH	EACH	54	54
542C0220	PIPE CULVERTS, CLASS C, TYPE 1 15"	FOOT	32	32
54213450	END SECTIONS 15"	EACH	2	2
54260315	TRAVERSABLE PIPE GRATE FOR CONCRETE END SECTION	FOOT	168	168
58600101	GRANULAR BACKFILL FOR STRUCTURES	CU YD	164	164

MODEL: D:\default
 FILE: M:\mch\p\illinois\benley.com\PROJECTS\DOT OFFICES\DISTRICT 3\PROJECTS\66M51\CLAVERT\66M51_PLANS.dgn

USER NAME = ronald.woodshank	DESIGNED - RW	REVISED -
PLOT SCALE = 100.0000' / in.	DRAWN - RW	REVISED -
PLOT DATE = 8/31/2022	CHECKED - YP	REVISED -
	DATE - 2/14/2022	REVISED -

**STATE OF ILLINOIS
DEPARTMENT OF TRANSPORTATION**

SUMMARY OF QUANTITIES	
SCALE:	SHEET 2 OF 4 SHEETS STA. TO STA.

F.A.P. RTE.	SECTION	COUNTY	TOTAL SHEETS	SHEET NO.
311	(3BB)CLV	LASALLE	26	4
			CONTRACT NO. 66M51	
ILLINOIS FED. AID PROJECT				

CONSTRUCTION CODE
CONTRACT MAINTENANCE
100% STATE
BOX CULVERT
0004
S.N. 050-2574

CODE NO.	ITEM	UNIT	TOTAL QUANTITY	
63200310	GUARDRAIL REMOVAL	FOOT	411	411
64200116	SHOULDER RUMBLE STRIPS, 16 INCH	FOOT	94	94
67100100	MOBILIZATION	L SUM	1	1
70100405	TRAFFIC CONTROL AND PROTECTION, STANDARD 701321	EACH	1	1
70100450	TRAFFIC CONTROL AND PROTECTION, STANDARD 701201	L SUM	1	1
70106500	TEMPORARY BRIDGE TRAFFIC SIGNALS	EACH	1	1
70300100	SHORT TERM PAVEMENT MARKING	FOOT	14	14
70300150	SHORT TERM PAVEMENT MARKING REMOVAL	SQ FT	5	5
70400100	TEMPORARY CONCRETE BARRIER	FOOT	312.5	312.5
70400200	RELOCATE TEMPORARY CONCRETE BARRIER	FOOT	312.5	312.5
* 78009004	MODIFIED URETHANE PAVEMENT MARKING - LINE 4"	FOOT	1044	1044
* 78009006	MODIFIED URETHANE PAVEMENT MARKING - LINE 6"	FOOT	220	220
78300202	PAVEMENT MARKING REMOVAL - WATER BLASTING	SQ FT	414	414
X0326390	CONCRETE SLAB REMOVAL	SQ YD	106	106

*= SPECIALTY ITEM

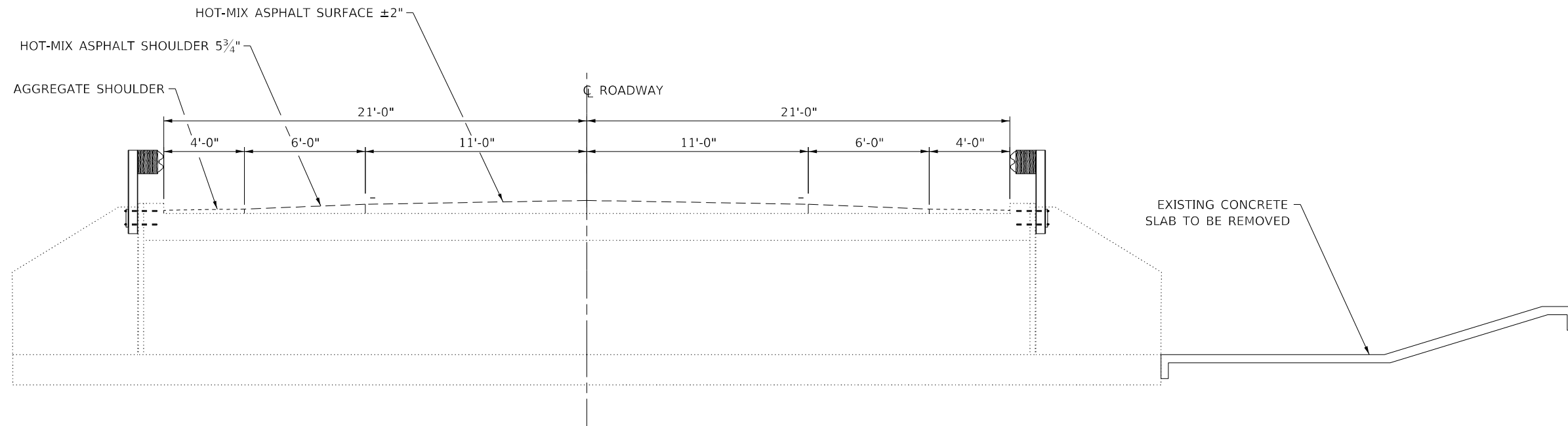
MODEL: Default
FILE: M:\asrc\p\illinois\benley.com\PROJECTS\DOT_Offices\District_3\Project\366645\CA\Drawings\366645-PLAN-501

USER NAME = ronald.woodshank	DESIGNED - RW	REVISED -	STATE OF ILLINOIS DEPARTMENT OF TRANSPORTATION	SUMMARY OF QUANTITIES			F.A.P. RTE.	SECTION	COUNTY	TOTAL SHEETS	SHEET NO.
PLOT SCALE = 100.0000' / in.	DRAWN - RW	REVISED -					311	(3BB)CLV	LASALLE	26	5
PLOT DATE = 8/31/2022	CHECKED - YP	REVISED -		SCALE: SHEET 3 OF 4 SHEETS STA. TO STA.			CONTRACT NO. 66M51				
DATE = 2/14/2022	REVISOR -	REVISED -					ILLINOIS FED. AID PROJECT				

CODE NO.	ITEM	UNIT	TOTAL QUANTITY	CONSTRUCTION CODE	
				CONTRACT MAINTENANCE	100% STATE
				BOX CULVERT	
				0004	
				S. N. 050-2574	
X2700001	TEMPORARY RUMBLE STRIPS (SPECIAL)	EACH	6		6
Z0030850	TEMPORARY INFORMATION SIGNING	SQ FT	42		42

MODEL: D:\draft
 FILE NAME: p:\110324\kenderley.com\PROJECTS\Documents\DOT_Offices\District_3\Project\3D66M51\CADD\3D66M51-PLAN.dgn

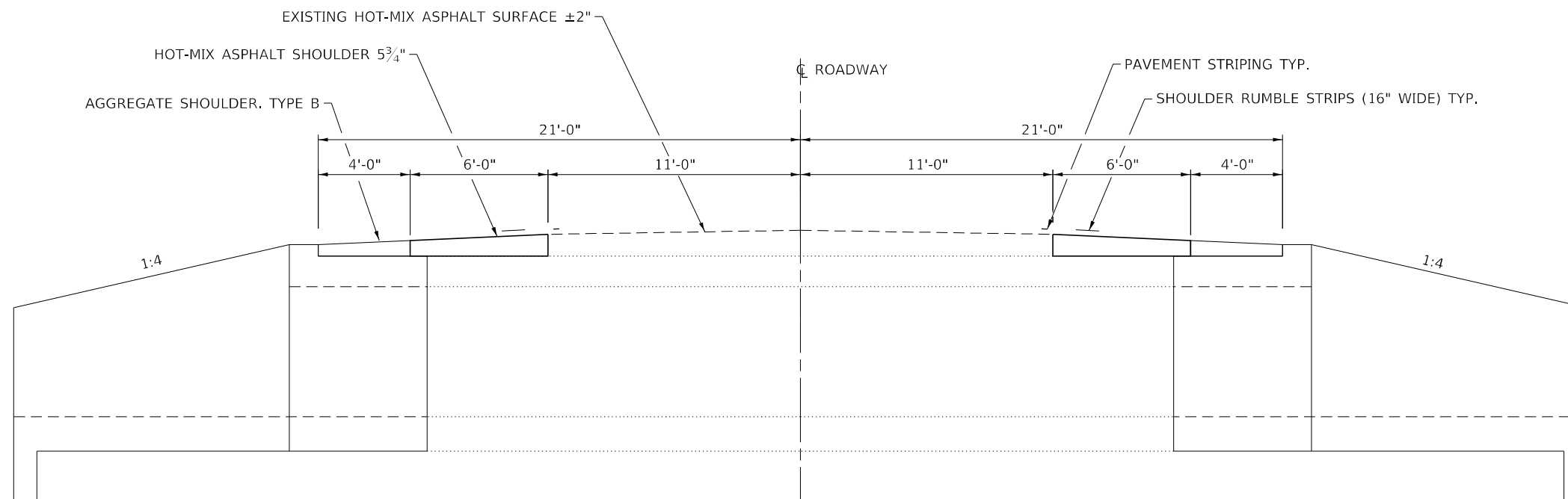
USER NAME = ronald.woodshank	DESIGNED - RW	REVISED -	STATE OF ILLINOIS DEPARTMENT OF TRANSPORTATION	SUMMARY OF QUANTITIES				F.A.P. RTE.	SECTION	COUNTY	TOTAL SHEETS	SHEET NO.
DRAWN - RW	REVISED -	311						(3BB)CLV	LASALLE	26	6	
PLOT SCALE = 100.0000' / in.	CHECKED - YP	REVISED -		SCALE: SHEET 3 OF 4 SHEETS STA. TO STA.				CONTRACT NO. 66M51		ILLINOIS FED. AID PROJECT		
PLOT DATE = 8/31/2022	DATE - 2/14/2022	REVISED -										



EXISTING TYPICAL SECTION

STRUCTURE NO. 05-2574

STA. 797+70



PROPOSED TYPICAL SECTION

STRUCTURE NO. 05-2574

STA. 797+70

FILE NAME: p:\u1d3caw\beadefy.com\P\I\DOT\Documents\DOT Office\Dir\rdet_3\Project\036665\CAD\Drawings\036665_1.dwg

USER NAME = ronald.woodshank	DESIGNED - RW	REVISED -
	DRAWN - RW	REVISED -
PLOT SCALE = 100,0000' / in.	CHECKED - YP	REVISED -
PLOT DATE = 8/31/2022	DATE - 2/14/2022	REVISED -

**STATE OF ILLINOIS
DEPARTMENT OF TRANSPORTATION**

TYPICAL SECTIONS

SCALE: SHEET 1 OF 1 SHEETS STA. TO STA.

F.A.P. RTE.	SECTION	COUNTY	TOTAL SHEETS	SHEET NO.
311	(3BB)CLV	LASALLE	27	7
CONTRACT NO. 66M51				
ILLINOIS FED. AID PROJECT				

SCHEDULE - EXCAVATION

LOCATION		REMOVAL AND DISPOSAL OF UNSUITABLE MATERIALS	EARTH EXCAVATION	STRUCTURE EXCAVATION	FURNISHED EXCAVATION	GRADING AND SHAPING DITCHES
STATION	LT/RT	CU YD	CU YD	CU YD	CU YD	FOOT
797+70	LT	14	76	22	254	225
	RT	14	76	22	212	225
TOTAL		28	152	44	466	450

SCHEDULE - PIPE CULVERT

LOCATION				PIPE CULVERT REMOVAL	PIPE CULVERT CLASS C TYPE 1 15"	END SECTION 15"
STA.	TO	STA.	LT/RT	FOOT	FOOT	EACH
797+97	TO	798+29	LT	32	32	2
TOTAL				32	32	2

SCHEDULE - GUARDRAIL

LOCATION				GUARDRAIL REMOVAL
STA.	TO	STA.	LT/RT	FOOT
796+69	TO	797+98	LT	129
796+73	TO	798+39	RT	166
798+24	TO	799+40	LT	116
TOTAL				411

SCHEDULE - SEEDING

LOCATION			SEEDING CLASS 2A	NITROGEN FERTILIZER NUTRIENT	PHOSPHORUS FERTILIZER NUTRIENT	POTASSIUM FERTILIZER NUTRIENT	HEAVY DUTY EROSION CONTROL BLANKET	TEMPORARY DITCH CHECKS
STATION	TO	STATION	ACRE	POUND	POUND	POUND	SQ YD	FOOT
796+95	LT	798+70	0.06	5.5	5.5	5.5	208	60
796+95	RT	798+00	0.06	5.5	5.5	5.5	292	60
TOTAL			0.12	11	11	11	500	120

SCHEDULE - PAVEMENT MARKING

LOCATION			PAVEMENT MARKING REMOVAL WATER-BLASTING	SHORT TERM PAVEMENT MARKING	SHORT TERM PAVEMENT MARKING REMOVAL	MODIFIED URETHANE PAVEMENT MARKING LINE 4"	MODIFIED URETHANE PAVEMENT MARKING LINE 6"
STATION	TO	STATION	SQ FT	FOOT	SQ FT	WHITE FOOT	YELLOW FOOT
793+46	TO	801+91	70	14	5		220
795+09	TO	800+31	172			522	
795+09	TO	800+31	172			522	
TOTAL			414	14	5	1044	220

SCHEDULE TEMPORARY CONCRETE BARRIER

LOCATION	TEMPORARY CONCRETE BARRIER	RELOCATE TEMPORARY CONCRETE BARRIER
STA.	FOOT	FOOT
STAGE I	312.5	
STAGE II		312.5
TOTAL	312.5	312.5

SCHEDULE - AGGREGATE

LOCATION		SUBBASE GRANULAR MATERIAL TYPE B 4"	AGGREGATE SHOULDERS TYPE B	AGGREGATE SURFACE COURSE TYPE B	GRANULAR BACKFILL FOR STRUCTURES
STA.	LT/RT	SQ YD	TON	TON	CU YD
797+70	LT	35	21	8	36.3
	RT	35	21		36.3
TOTAL		70	42	8	72.6

SCHEDULE - PAVING

LOCATION				PAVED SHOULDER REMOVAL	BITUMINOUS MATERIALS (TACK-COAT)	HOT-MIX ASPHALT SHOULDERS	SHOULDER RUMBLE STRIPS 16 INCH
STATION	TO	STATION	LT/RT	SQ YD	POUND	TON	FOOT
797+47	TO	797+94	LT	15	7	10	47
797+47	TO	797+94	RT	15	7	10	47
TOTAL				30	14	20	94

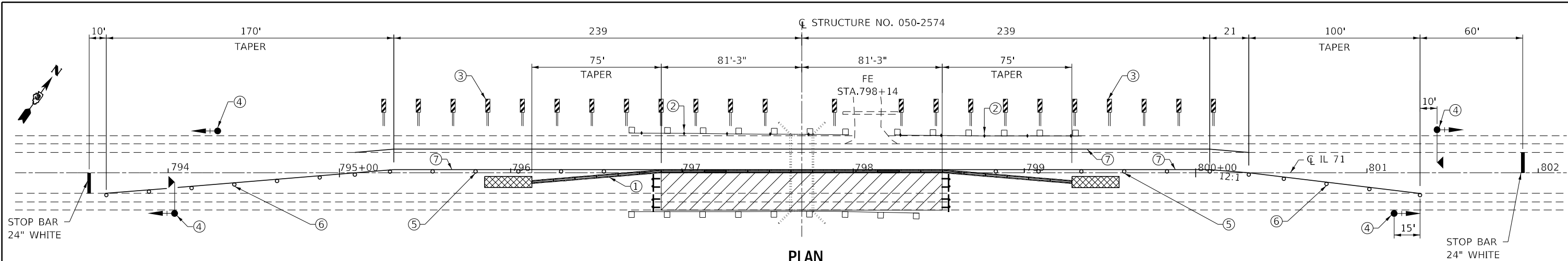
MODEL: Default
 FILE NAME: p:\ultra-pw-benefits.com\p\DOT\Documents\DOT Office\Dir\dir: 3\Project\036645\CAD\DATA\036645_L1_ANS.dgn

USER NAME = ronald.woodshank	DESIGNED - RW	REVISED -
	DRAWN - RW	REVISED -
PLOT SCALE = 100,0000' / in.	CHECKED - YP	REVISED -
PLOT DATE = 8/31/2022	DATE - 2/14/2022	REVISED -

**STATE OF ILLINOIS
DEPARTMENT OF TRANSPORTATION**

SCHEDULES			
SCALE:	SHEET 1 OF 1 SHEETS	STA.	TO STA.

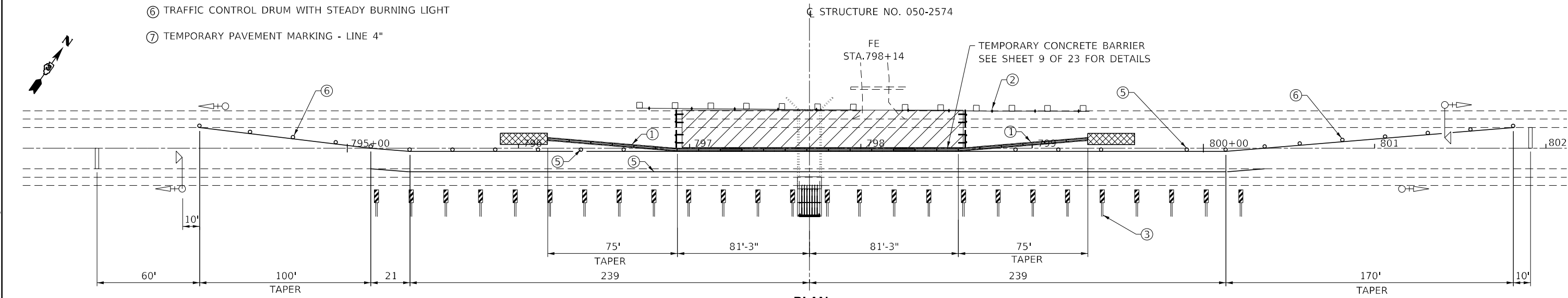
F.A.P. RTE.	SECTION	COUNTY	TOTAL SHEETS	SHEET NO.
311	(3BB)CLV	LASALLE	26	8
			CONTRACT NO. 66M51	
ILLINOIS FED. AID PROJECT				



**PLAN
STAGE I CONSTRUCTION**
CL STA. 797+70

- ① TEMPORARY CONCRETE BARRER SEE SHEET 11 OF 26 FOR DETAILS
- ② GUARDRAIL MARKERS AT 25' CTS. SEE STANDARD 782006
- ③ VERTICAL PANELS THROUGHOUT LANE SHIFT.
- ④ THE EDGE OF THE POST MOUNTED SIGNAL HEAD SHALL BE BETWEEN 24" AND 6' FROM THE EDGE OF SHOULDER.
- ⑤ TRAFFIC CONTROL DRUM
- ⑥ TRAFFIC CONTROL DRUM WITH STEADY BURNING LIGHT
- ⑦ TEMPORARY PAVEMENT MARKING - LINE 4"

NOTE: SEE SHEET 11 OF 26 FOR TEMPORARY CONCRETE BARRIER DETAILS



**PLAN
STAGE II CONSTRUCTION**
CL STA. 797+70

LEGEND

- WORK AREA
- SIGN
- TYPE III BARRICADE WITH FLASHING LIGHTS WHEN ARE NOT PRESENT
- DOUBLE VERTICAL PANEL (SEE DETAIL)
- CRYSTAL, BIDIRECTIONAL GUARDRAIL BARRIER WALL REFLECTOR
- TRAFFIC SIGNAL WITH BACKPLATE
- TRAFFIC SIGNAL WITH BACKPLATE AND MOTION DETECTOR
- TRAFFIC SIGNAL (STAGE I INSTALLATION)
- TRAFFIC SIGNAL WITH BACKPLATE AND MOTION DETECTOR (STAGE I INSTALLATION)
- TEMPORARY IMPACT ATTENUATORS (NON-REDIRECTIVE, NARROW) TEST LEVEL 3

MODEL: Default
 FILE NAME: p:\project\paw_bentley.com\p\w\dot\Documents\1\DOT Office\Drawings\3\Project\0366645\LA_ANS.dgn
 PROJECT: 0366645\LA_ANS.dgn

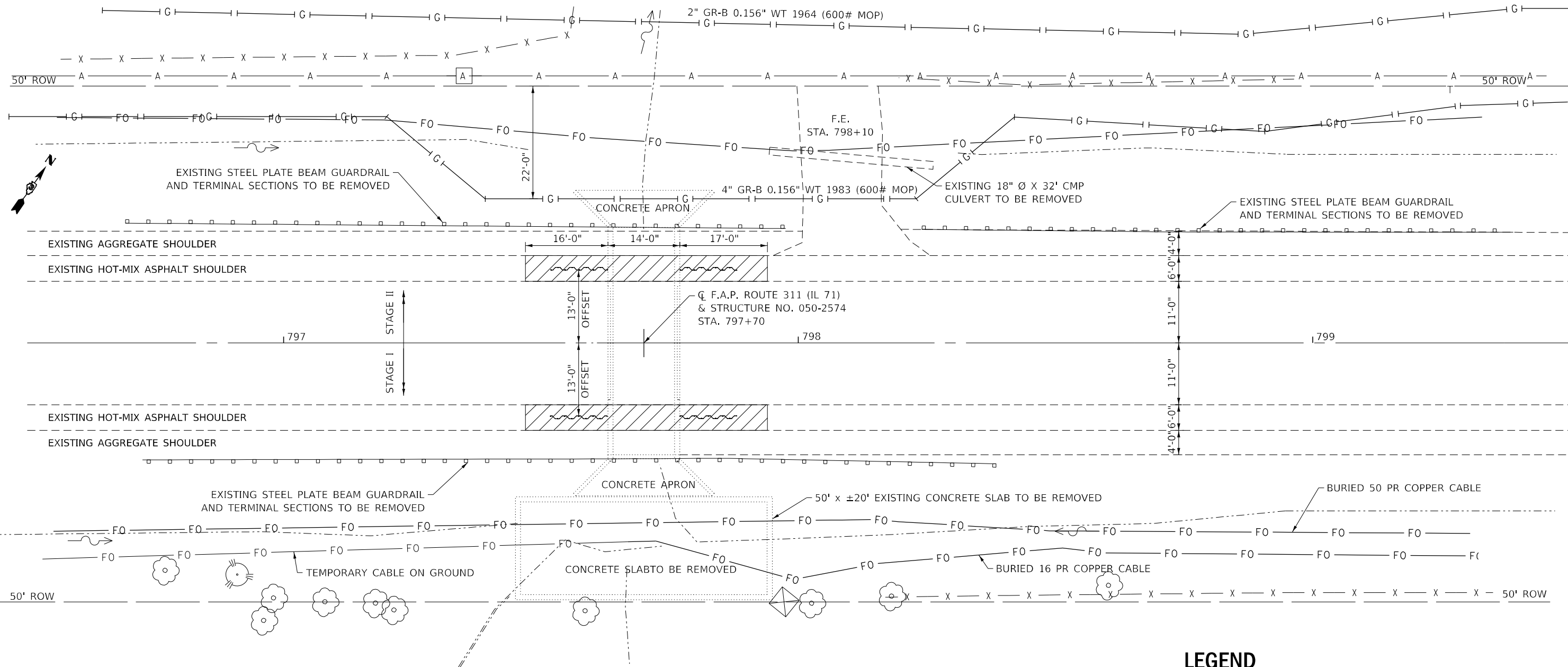
USER NAME = ronald.woodshank	DESIGNED - RW	REVISED -
	DRAWN - RW	REVISED -
PLOT SCALE = 100,0000' / in.	CHECKED - YP	REVISED -
PLOT DATE = 8/31/2022	DATE - 2/14/2022	REVISED -

**STATE OF ILLINOIS
DEPARTMENT OF TRANSPORTATION**

TRAFFIC CONTROL AND PROTECTION, STANDARD 701321

SCALE: SHEET 2 OF 3 SHEETS STA. TO STA.

F.A.P. RTE.	SECTION	COUNTY	TOTAL SHEETS	SHEET NO.
311	(3BB)CLV	LASALLE	26	10
CONTRACT NO. 66M51				
ILLINOIS FED. AID PROJECT				



EXISTING ROADWAY PLAN DETAILS

LEGEND	
	TEMPORARY SHEET PILING
FO	BURIED FIBER OPTIC
FO	ON GROUND TEMPORARY FIBER OPTIC
A	AREIAL POWER LINE
G	BURID GAS LINE
X	FENCE
	STEEL PLATE BEAM GUARDRAIL
---	RIGHT OF WAY
---	EXISTING DITCH LINE
	TREE/SHRUB
	GAS MARKER (NICOR)
	PAVED SHOULDER REMOVAL (HMA)

MODEL: Default
 FILE: \\nas101.pva.bluestem.com\P\W\DOT\Documents\1\DOT Office\Dir\rdet_3\Project\1\366645\1\366645_1.dwg

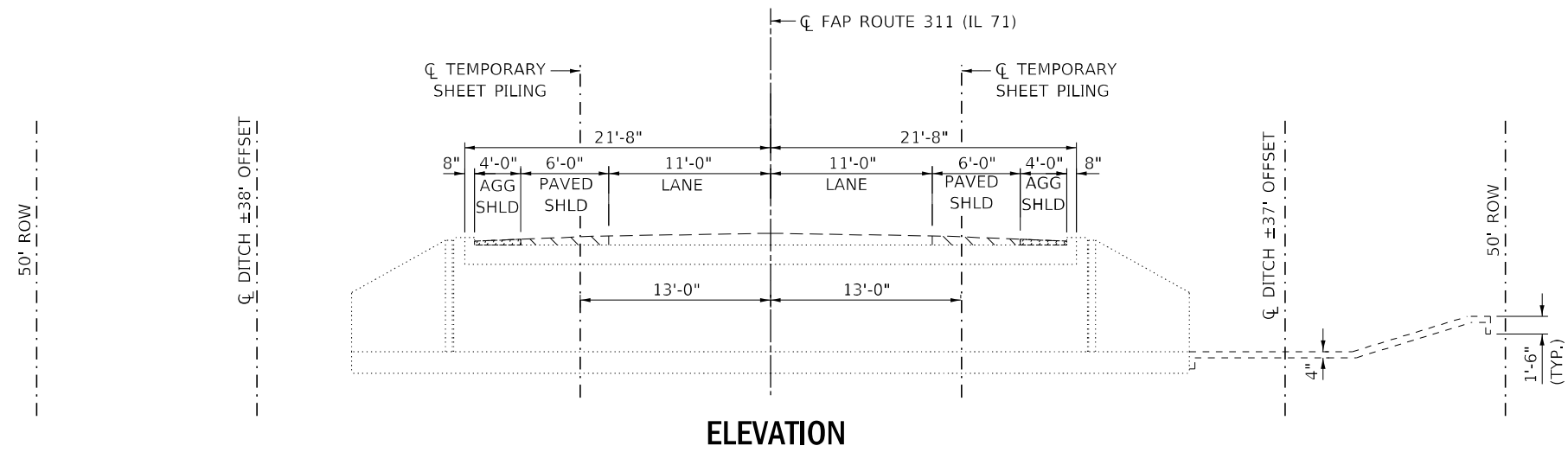
USER NAME = ronald.woodshank	DESIGNED - RW	REVISED -
	DRAWN - RW	REVISED -
PLOT SCALE = 100,0000' / in.	CHECKED - YP	REVISED -
PLOT DATE = 10/13/2022	DATE - 2/14/2022	REVISED -

**STATE OF ILLINOIS
DEPARTMENT OF TRANSPORTATION**

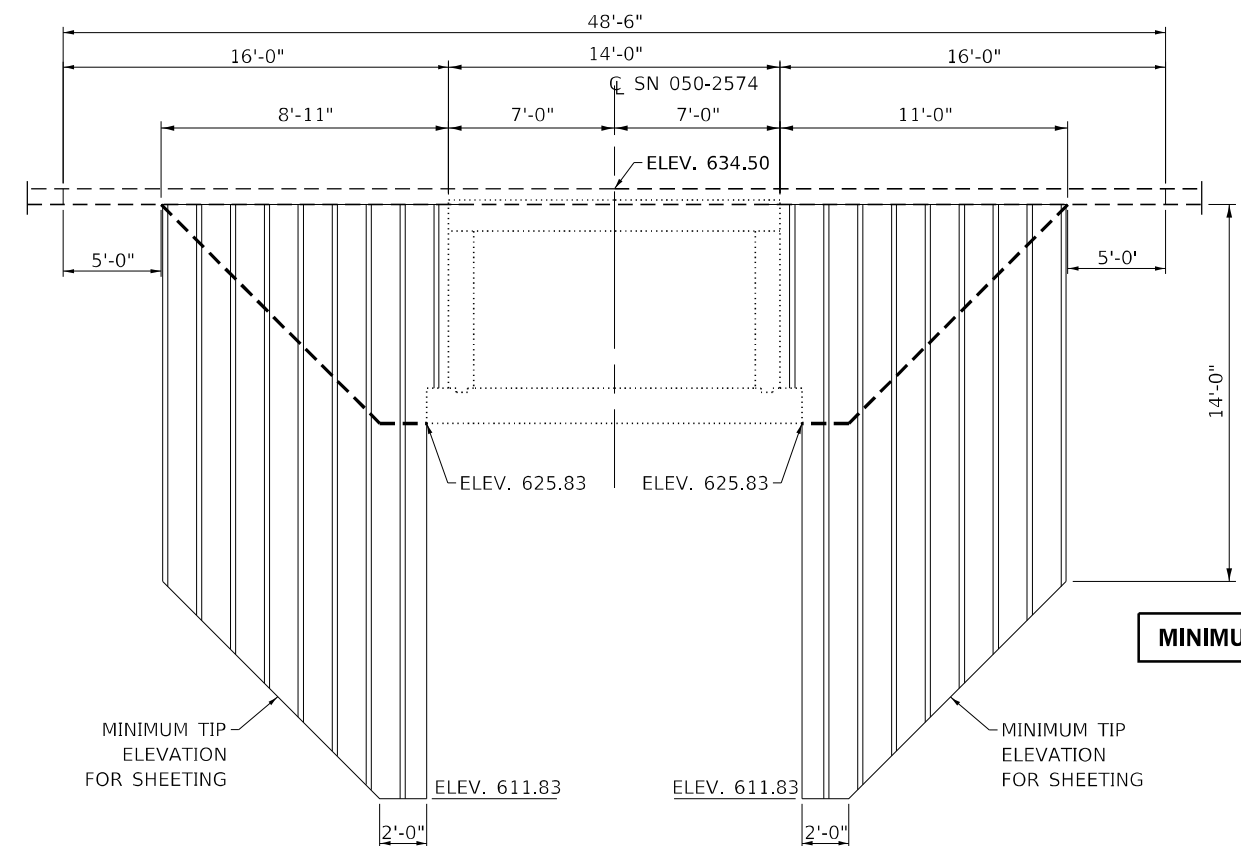
EXISTING ROADWAY PLAN REMOVAL DETAILS

SCALE: SHEET 2 OF 9 SHEETS STA. TO STA.

F.A.P. RTE.	SECTION	COUNTY	TOTAL SHEETS	SHEET NO.
311	(3BB)CLV	LASALLE	26	13
			CONTRACT NO. 66M51	
ILLINOIS FED. AID PROJECT				

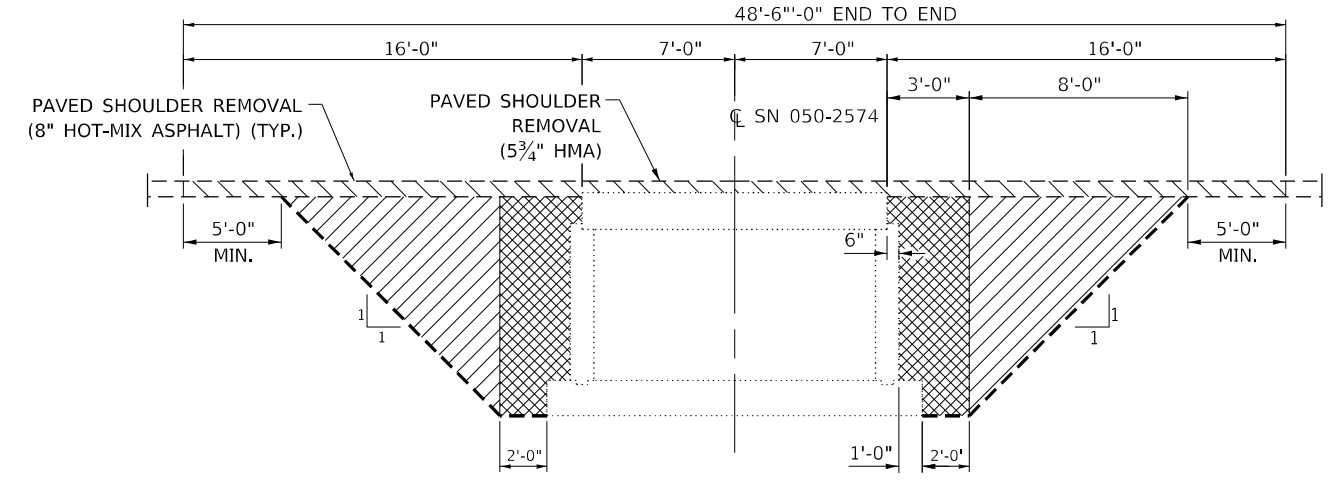


ELEVATION



SECTION THROUGH BARREL
SHOWING TEMPORARY SHEET PILING

MINIMUM SECTION MODULUS = 17 in³/ft



SECTION THROUGH BARREL
SHOWING EXCAVATION

BILL OF MATERIAL FOR STAGE I

ITEM	UNIT	TOTAL
TEMPORARY SHEET PILING	SQ FT	130

LEGEND

- EXCAVATION LIMITS
- EARTH EXCAVATION
- STRUCTURE EXCAVATION

MODEL: Default
FILE NAME: c:\illco-ew-bentley.com\p\dot\Documents\DOT_Offices\District_3\Projects\0366M51\CADD\0366M51-PLANS.dgn

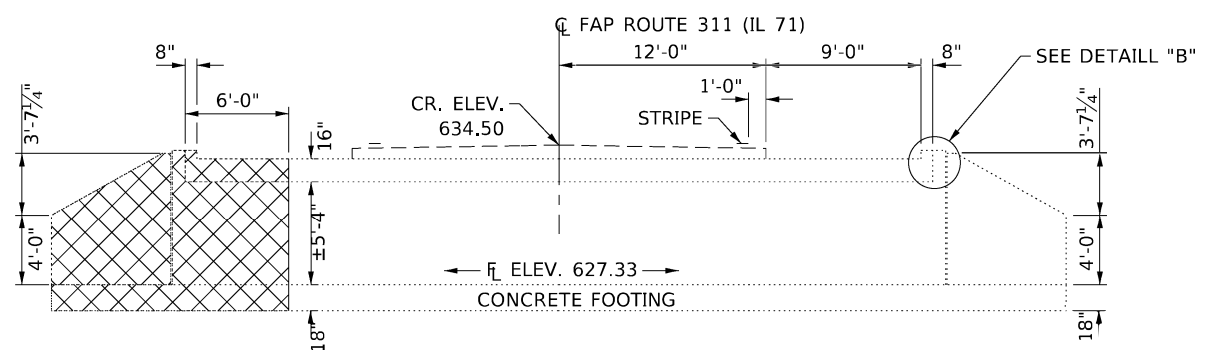
USER NAME = ronald.woodshank	DESIGNED - RW	REVISED -
PLOT SCALE = 100,000' / in.	DRAWN - RW	REVISED -
PLOT DATE = 10/13/2022	CHECKED - YP	REVISED -
	DATE - 2/14/2022	REVISED -

**STATE OF ILLINOIS
DEPARTMENT OF TRANSPORTATION**

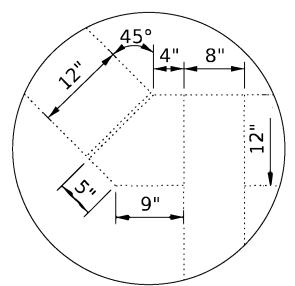
EXCAVATION DETAILS FOR STRUCTURE NO. 050-2574	
SCALE:	SHEET 3 OF 9 SHEETS STA. TO STA.

F.A.P. RTE.	SECTION	COUNTY	TOTAL SHEETS	SHEET NO.
311	(3BB)CLV	LASALLE	26	14
			CONTRACT NO. 66M51	
ILLINOIS FED. AID PROJECT				

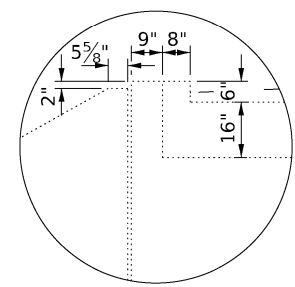
NOTE: EXISTING LONGITUDINAL REINFORCEMENT BARS SHALL BE CLEANED, STRAIGHTENED AND CUT A MINIMUM OF 6" FROM REMOVAL LINE TO FACILITATE THE INSTALLATION OF MECHANICAL SPLICERS. COST INCLUDED WITH CONCRETE REMOVAL.



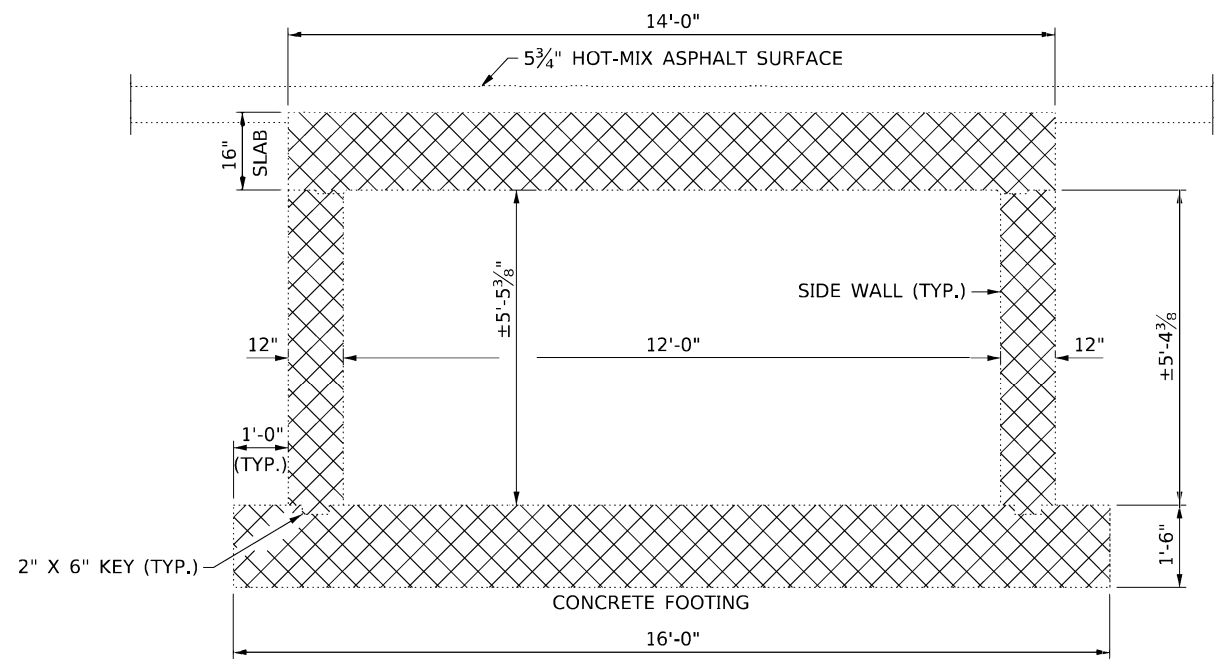
ELEVATION
LOOKING EAST



DETAIL "A"

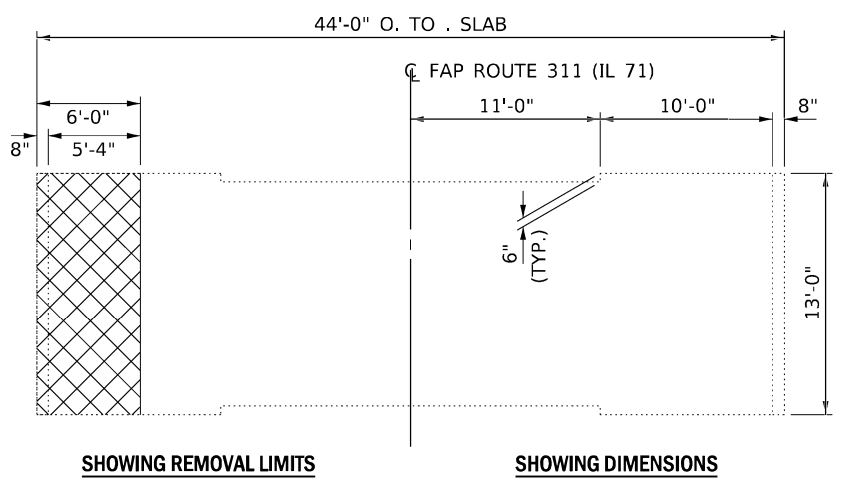


DETAIL "B"

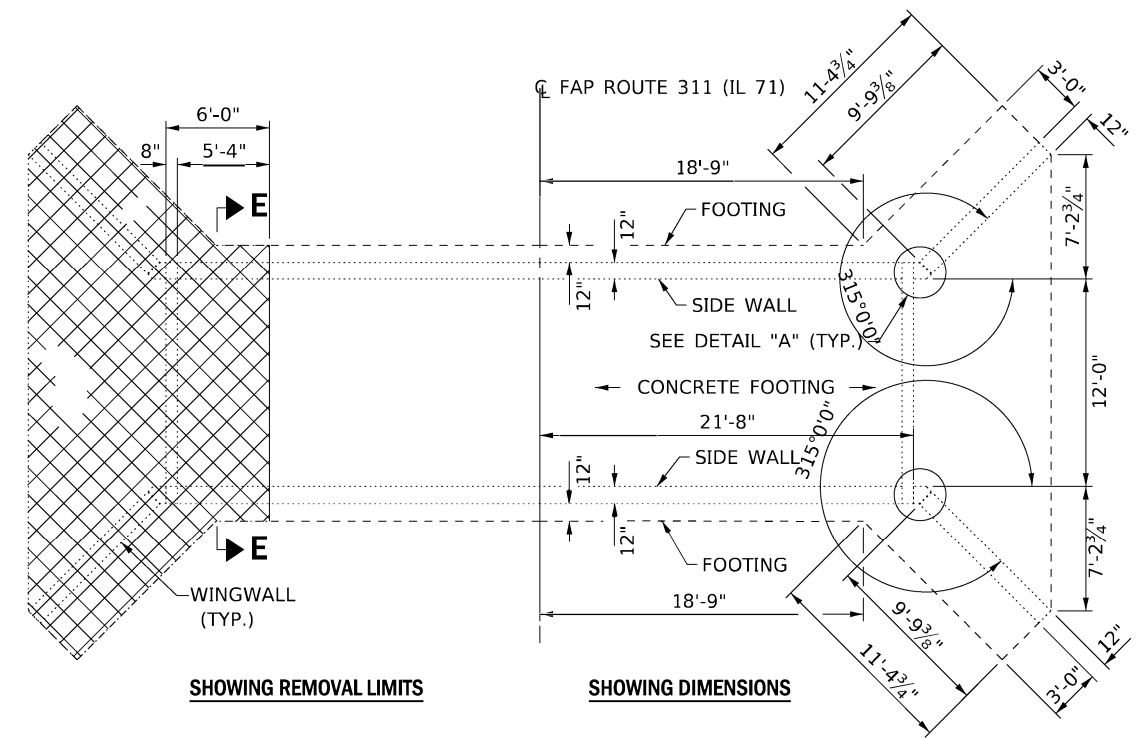


SECTION E-E

CONCRETE REMOVAL
 CONCRETE SLAB REMOVAL



PLAN - SUPERSTRUCTURE



PLAN - SUBSTRUCTURE

**BILL OF MATERIAL
FOR STAGE I**

ITEM	UNIT	TOTAL
CONCRETE REMOVAL	CU YD	31

MODEL: Default
 FILE: Mainfile_PlanSubdet-cw_bentley.com:PNWIDOT\Documents\DOT_Offices\District_3\Project\3136665\ICAD\Drawn\3136665_1_PANS.dgn

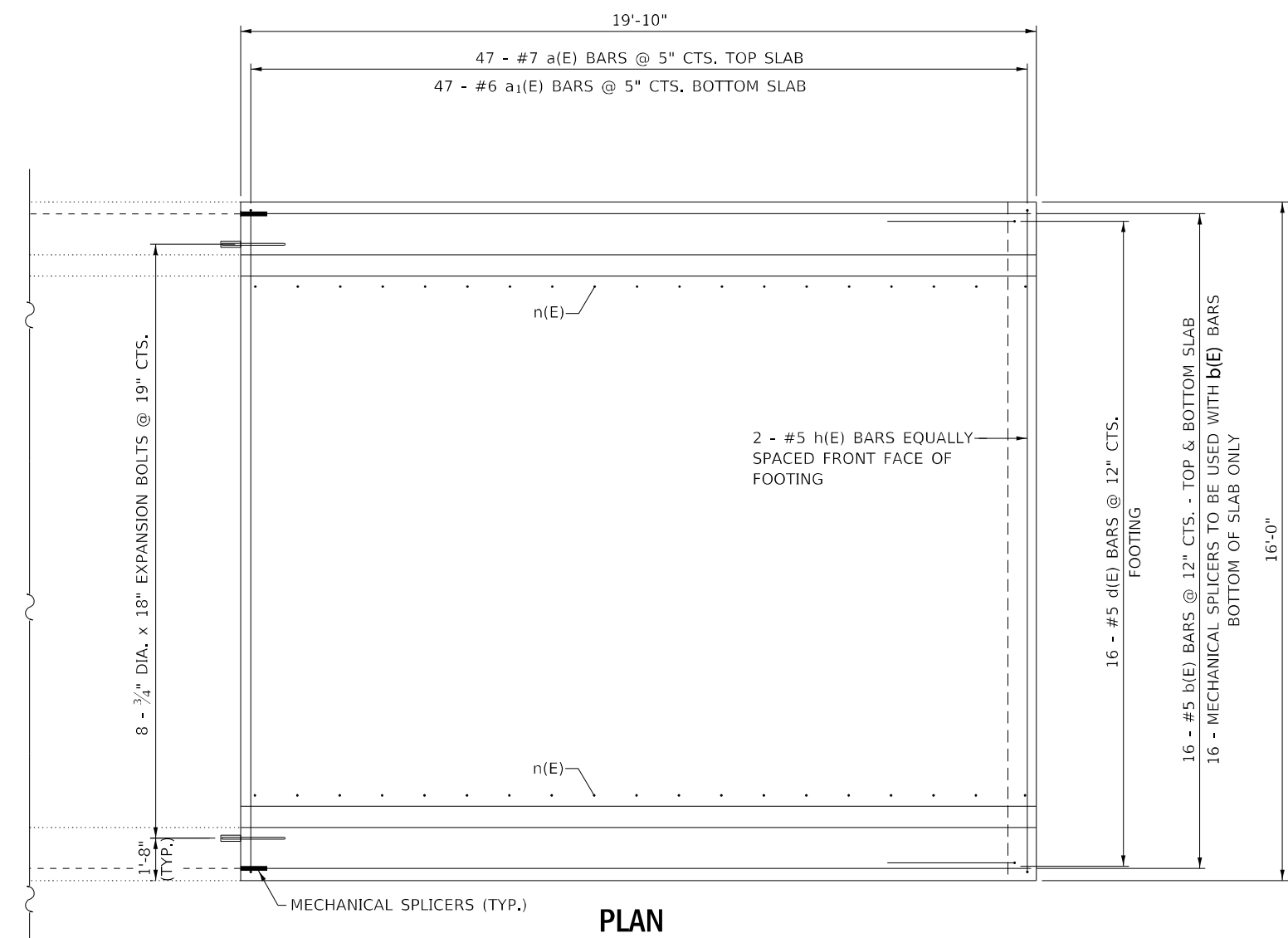
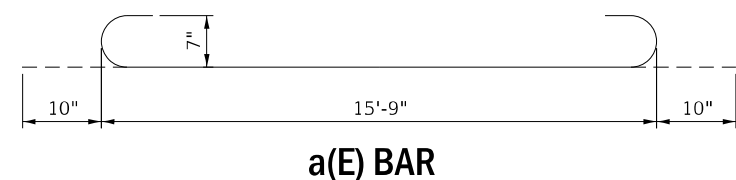
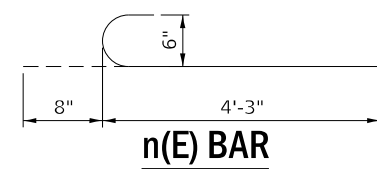
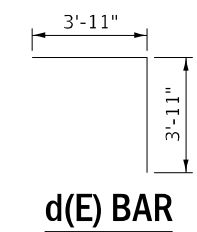
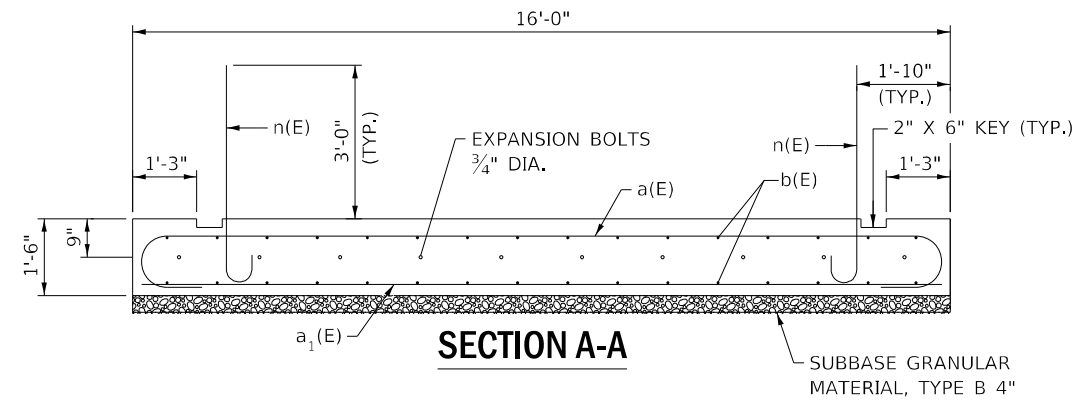
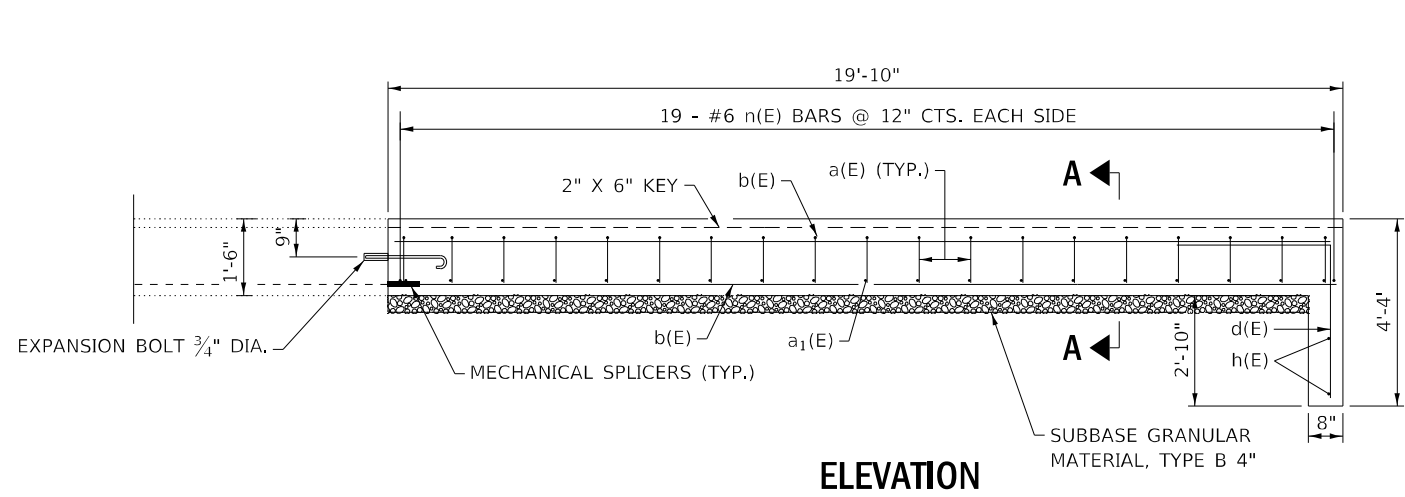
USER NAME = ronald.woodshank	DESIGNED - RW	REVISED -
	DRAWN - RW	REVISED -
PLOT SCALE = 100.0000' / in.	CHECKED - YP	REVISED -
PLOT DATE = 10/13/2022	DATE - 2/14/2022	REVISED -

**STATE OF ILLINOIS
DEPARTMENT OF TRANSPORTATION**

STAGE II REMOVAL DETAILS FOR STRUCTURE NO. 050-2574

SCALE: SHEET 5 OF 9 SHEETS STA. TO STA.

F.A.P. RTE. 311	SECTION (3BB)CLV	COUNTY LASALLE	TOTAL SHEETS 26	SHEET NO. 16
			CONTRACT NO. 66M51	
ILLINOIS FED. AID PROJECT				



BILL OF MATERIAL FOR STAGE I

BAR	NO.	SIZE	LENGTH	SHAPE
a(E)	47	#7	17'-5"	
a1(E)	47	#6	15'-9"	
b(E)	32	#5	19'-1"	
d(E)	16	#5	7'-10"	
h(E)	2	#5	15'-9"	
n(E)	38	#6	4'-11"	
CONCRETE STRUCTURES			CU YD	18.7
REINFORCEMENT BARS EPOXY COATED			POUND	3870
MECHANICAL SPLICERS			EACH	16
EXPANSION BOLTS 3/4" x 18"			EACH	8

- GENERAL NOTES:
1. DETAILS FOR EAST END SHOWN, WEST END IS A MIRROR IMAGE OF WHAT IS SHOWN
 2. A MINIMUM OF 1 1/2" CLEARANCE BETWEEN CONCRETE AND REINFORCEMENT IS REQUIRED.

MODEL: Default
 FILE NAME: p:\projects\66m51\stage1\stage1.dwg
 PROJECT: 66M51-1-ANS.dgn

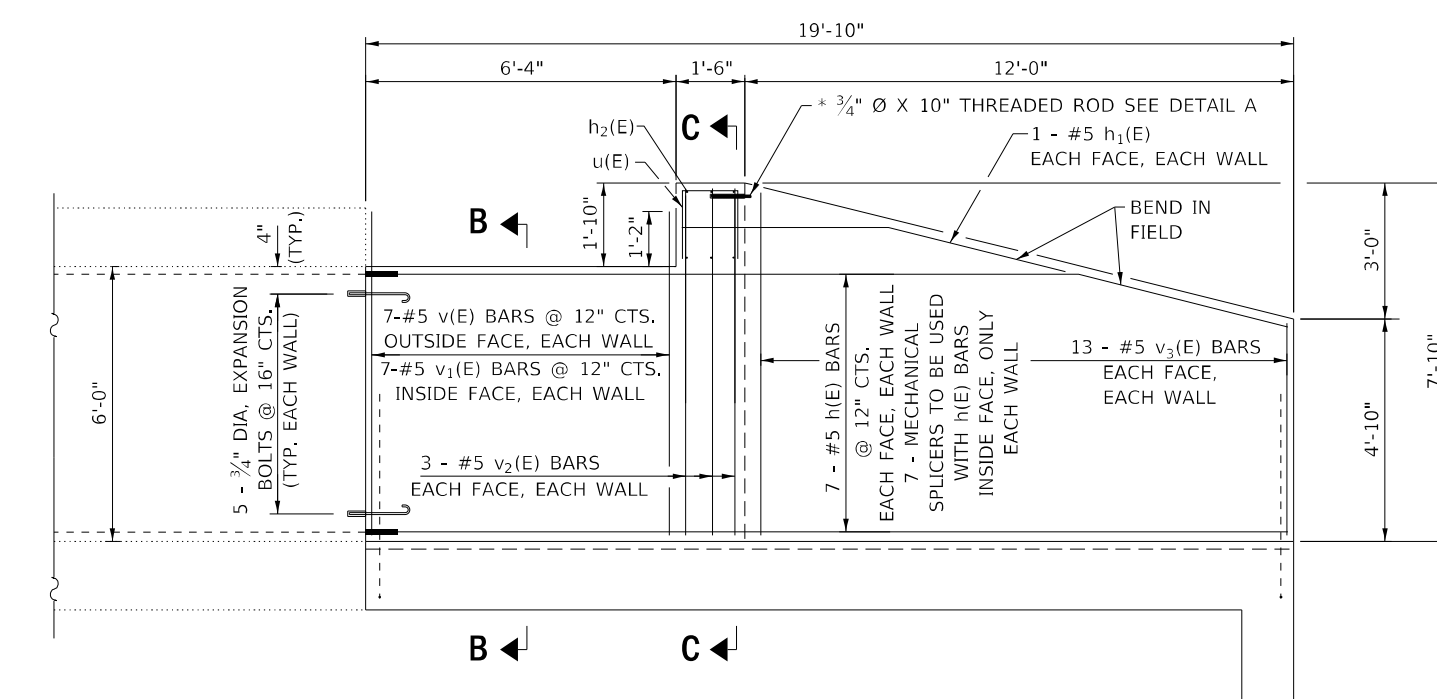
USER NAME = ronald.woodshank	DESIGNED - RW	REVISED -
PLOT SCALE = 100,0000' / in.	DRAWN - RW	REVISED -
PLOT DATE = 10/13/2022	CHECKED - YP	REVISED -
	DATE - 2/14/2022	REVISED -

**STATE OF ILLINOIS
DEPARTMENT OF TRANSPORTATION**

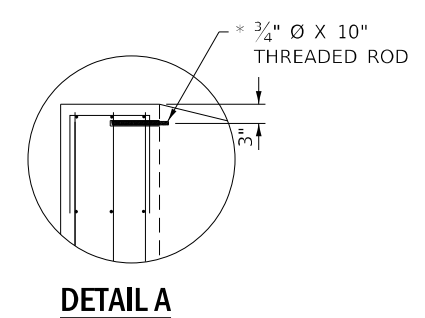
**STAGE I CONSTRUCTION
CONCRETE STRUCTURE - FOOTING**

SCALE: SHEET 6 OF 9 SHEETS STA. TO STA.

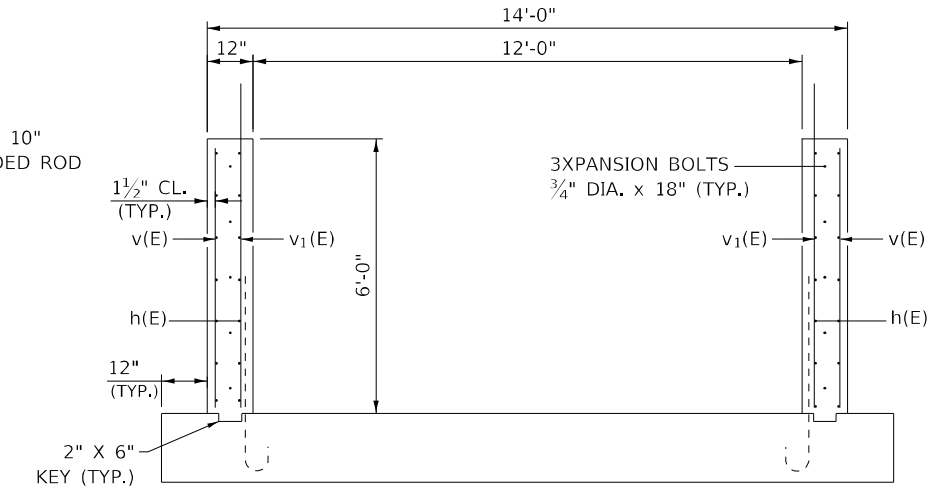
F.A.P. RTE.	SECTION	COUNTY	TOTAL SHEETS	SHEET NO.
311	(3BB)CLV	LASALLE	26	17
ILLINOIS FED. AID PROJECT			CONTRACT NO. 66M51	



ELEVATION

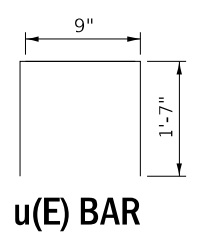


DETAIL A

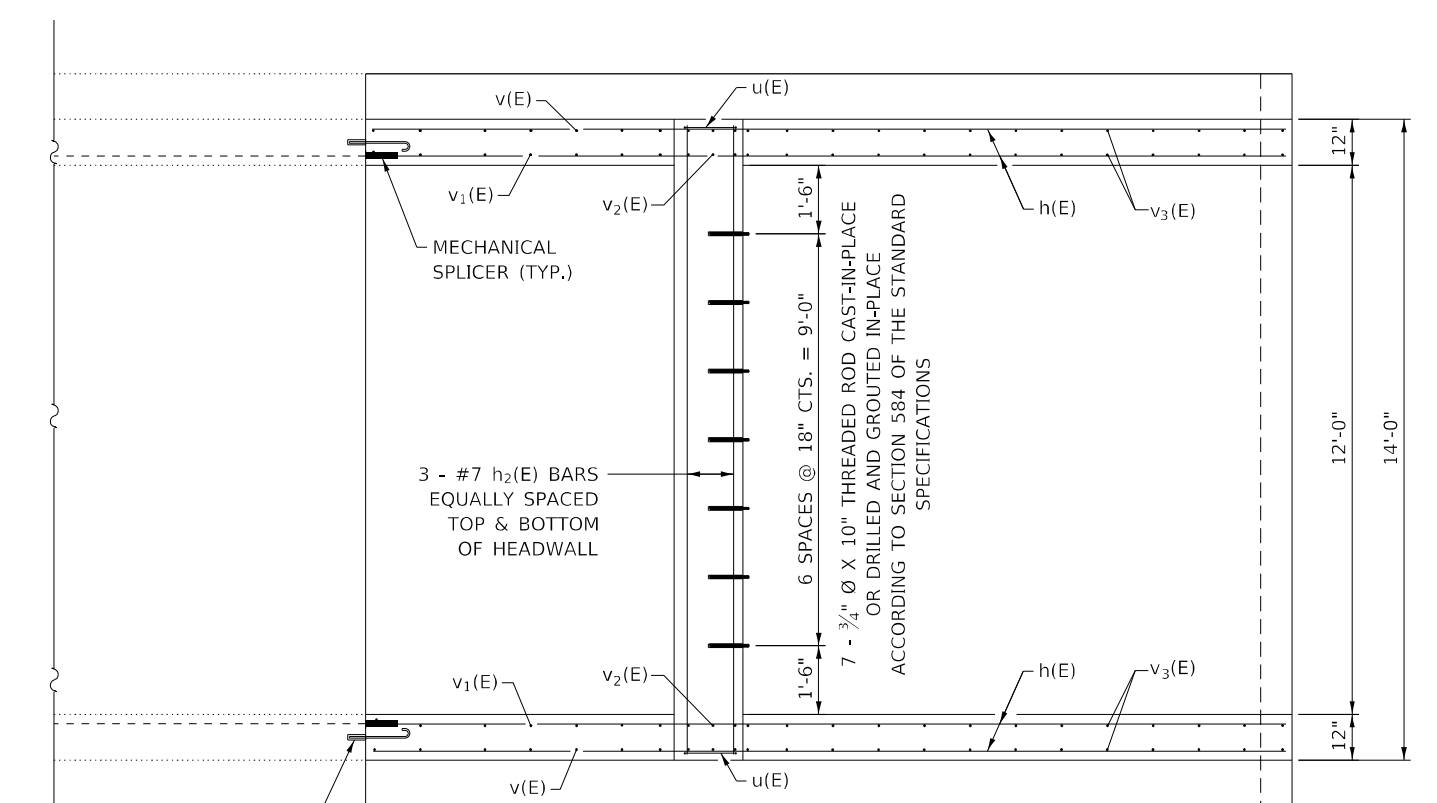


SECTION B-B

NOTE: ORDER v₃(E) BARS FULL LENGTH AND CUT TO FIT SLOPE



u(E) BAR

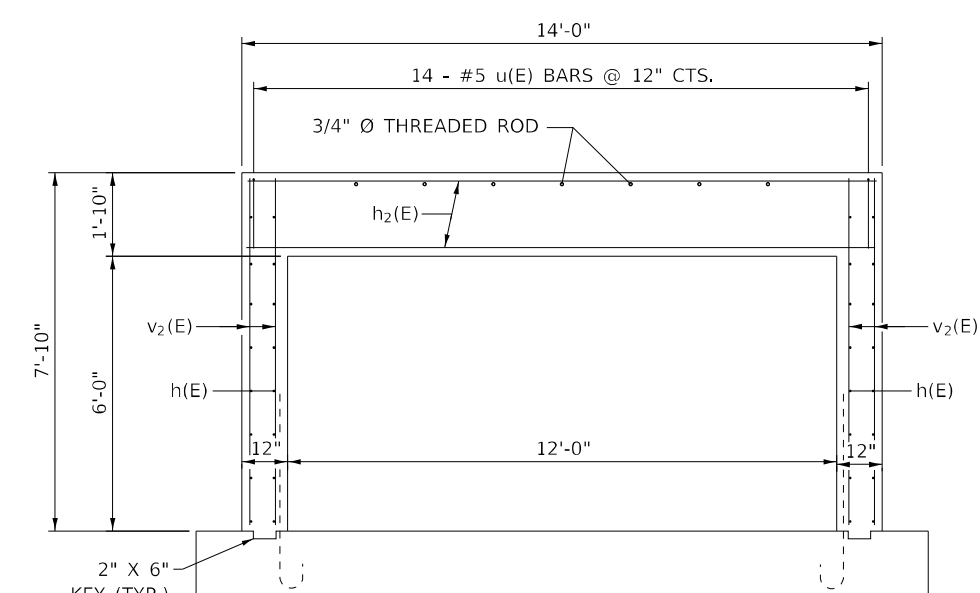


**PLAN
STAGE I CONSTRUCTION**

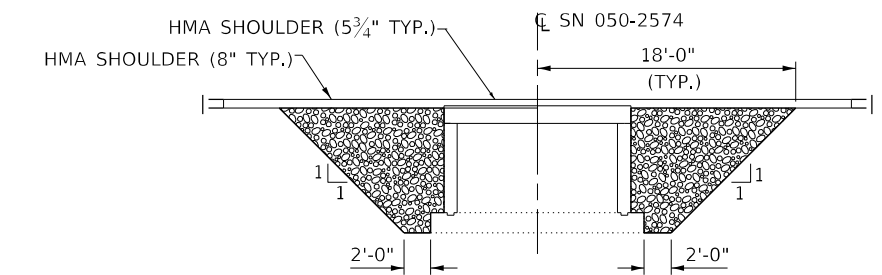
**BILL OF MATERIAL
FOR STAGE I**

BAR	NO.	SIZE	LENGTH	SHAPE
h(E)	28	#5	20'-0"	—
h1(E)	4	#5	4'-0"	—
h2(E)	6	#7	13'-9"	—
u(E)	14	#5	3'-11"	□
v(E)	14	#5	5'-9"	—
v1(E)	14	#5	7'-2"	—
v2(E)	12	#5	7'-7"	—
v3(E)	52	#5	7'-6"	—
CONCRETE STRUCTURES			CU. YDS.	10.6
REINFORCEMENT BARS, EPOXY COATED			LBS.	1520
MECHANICAL SPLICERS			EACH	14
EXPANSION BOLTS 3/4" x 18"			EACH	10

COST OF FURNISHING AND INSTALLING 3/4" Ø THREADED ROD SHALL BE INCLUDED IN THE COST OF THE "TRAVERSABLE PIPE GRATE FOR CONCRETE END SECTION".



SECTION C-C



CROSS SECTION

SHOWING GRANULAR BACKFILL FOR STRUCTURES ADJACENT TO SIDE WALLS

- GENERAL NOTES:
 1. DETAILS FOR EAST END SHOWN, WEST END IS A MIRROR IMAGE OF WHAT IS SHOWN
 2. A MINIMUM OF 1/2" CLEARANCE BETWEEN CONCRETE AND REINFORCEMENT IS REQUIRED.

MODEL: Default
 FILE NAME: p:\projects\66651\CAD\Drawings\311\Project\311\Drawings\311\ANS.dgn
 PROJECT: 66651

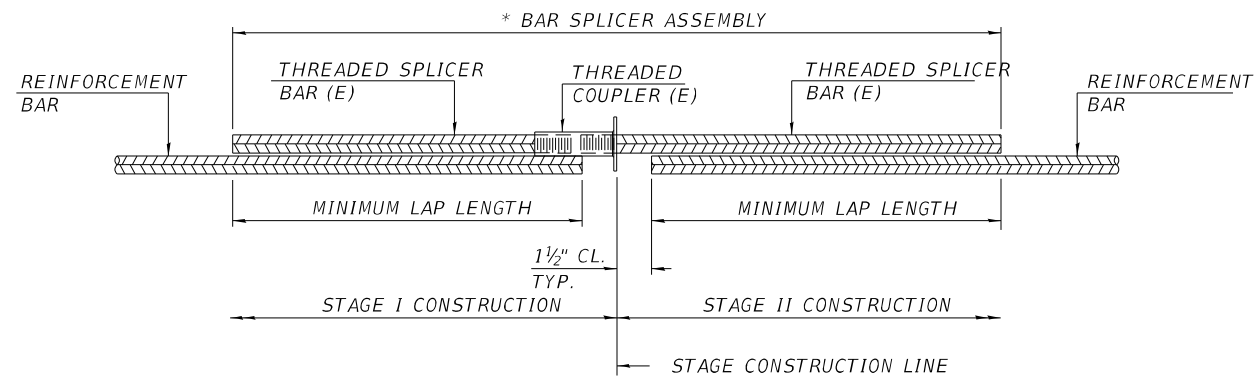
USER NAME = ronald.woodshank	DESIGNED - RW	REVISED -
PLOT SCALE = 100,0000' / in.	CHECKED - YP	REVISED -
PLOT DATE = 10/13/2022	DATE - 2/14/2022	REVISED -

**STATE OF ILLINOIS
DEPARTMENT OF TRANSPORTATION**

**STAGE I CONSTRUCTION
STRUCTURE - SIDE WALLS & HEAD WALL**

SCALE: SHEET 7 OF 9 SHEETS STA. TO STA.

F.A.P. RTE. 311	SECTION (3BB)CLV	COUNTY LASALLE	TOTAL SHEETS 26	SHEET NO. 18
ILLINOIS FED. AID PROJECT			CONTRACT NO. 66M51	

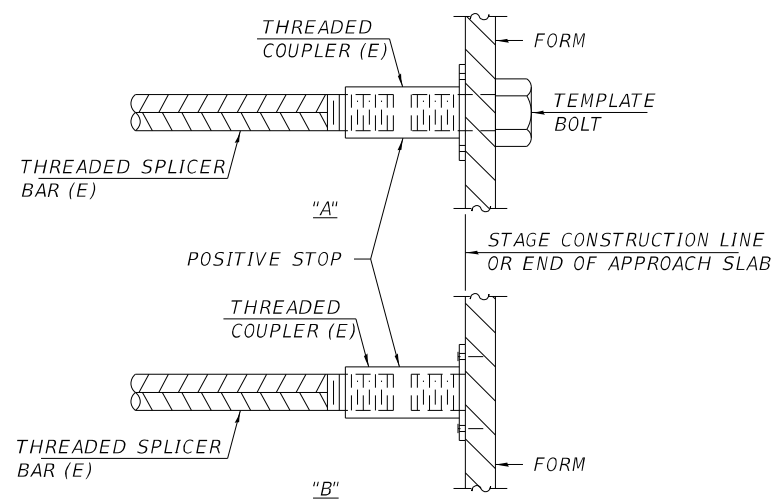


STANDARD BAR SPLICER ASSEMBLY PLAN
(ALL COMPONENTS SHALL BE PROVIDED FROM ONE SUPPLIER)

THREADED SPLICER BAR LENGTH = MIN. LAP LENGTH + 1 1/2" + THREAD LENGTH

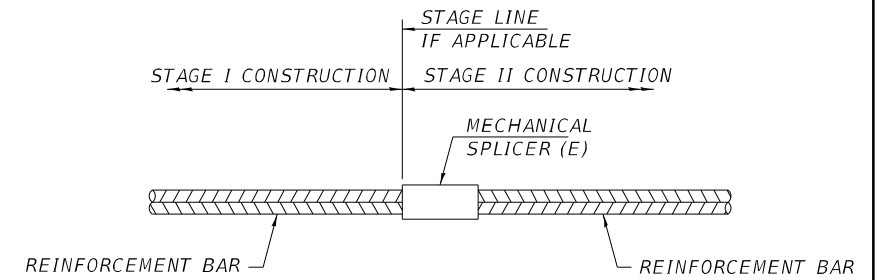
* EPOXY NOT REQUIRED ON BAR SPLICER ASSEMBLY COMPONENTS USED IN CONJUNCTION WITH BLACK BARS.

LOCATION	BAR SIZE	NO. ASSEMBLIES REQUIRED	MINIMUM LAP LENGTH



INSTALLATION AND SETTING METHODS

"A" : SET BAR SPLICER ASSEMBLY BY MEANS OF A TEMPLATE BOLT.
 "B" : SET BAR SPLICER ASSEMBLY BY NAILING TO WOOD FORMS OR CEMENTING TO STEEL FORMS.
 (E) : INDICATES EPOXY COATING.



STANDARD MECHANICAL SPLICER

LOCATION	BAR SIZE	NO. ASSEMBLIES REQUIRED
TOP SLAB	#5	28
SIDE WALLS	#5	28
BOTTOM SLAB	#5	32

Notes:
 Splicer bars shall be deformed with threaded ends and have a minimum 60 ksi yield strength.
 All reinforcement shall be lapped and tied to the splicer bars.
 Bar splicer assemblies shall be epoxy coated according to the requirements for reinforcement bars. See Section 508 of the Standard Specifications.
 See approved list of bar splicer assemblies and mechanical splicers for alternatives.

BSD-1

1-1-2020

MODEL: Default
 FILE NAME: p:\project-pw-bentley.com\p\indot\documents\indot_office\dir\dr_3\project\0366m5\cadd\date\0366m5_1.d\ANS.dgn

USER NAME = ronald.woodshank	DESIGNED - RW	REVISED -
	DRAWN - RW	REVISED -
PLOT SCALE = 100,0000 ' / in.	CHECKED - YP	REVISED -
PLOT DATE = 10/13/2022	DATE - 10/13/2022	REVISED -

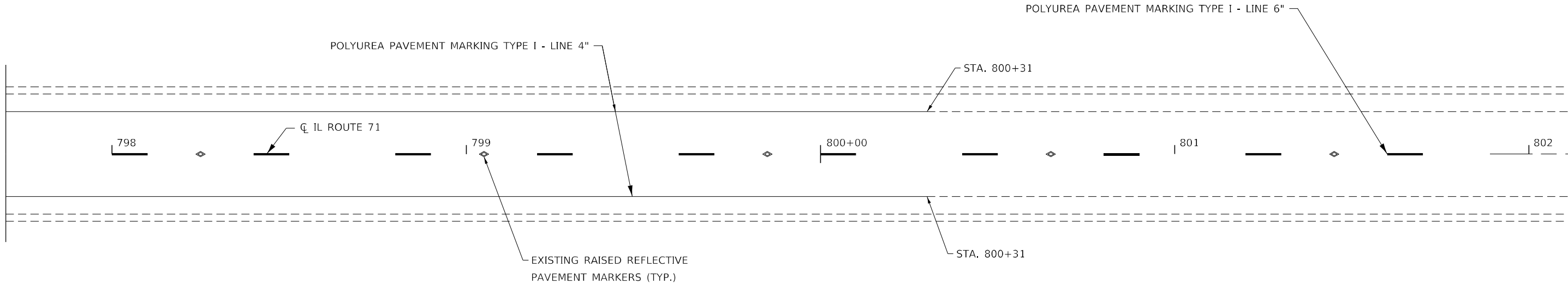
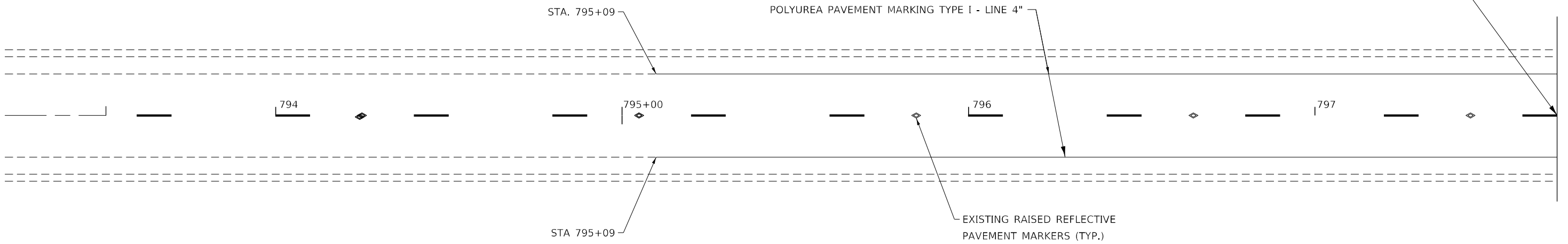
**STATE OF ILLINOIS
DEPARTMENT OF TRANSPORTATION**

**BAR SPLICER ASSEMBLY AND MECHANICAL SPLICER DETAILS
STRUCTURE NO.**

SCALE: SHEET 1 OF 1 SHEETS STA. TO STA.

F.A.P. RTE.	SECTION	COUNTY	TOTAL SHEETS	SHEET NO.
311	(3BB)CLV	LASALLE	20A	21
CONTRACT NO. 66M51			ILLINOIS FED. AID PROJECT	

CL STRUCTURE NO. 050-2574
STA. 797+70



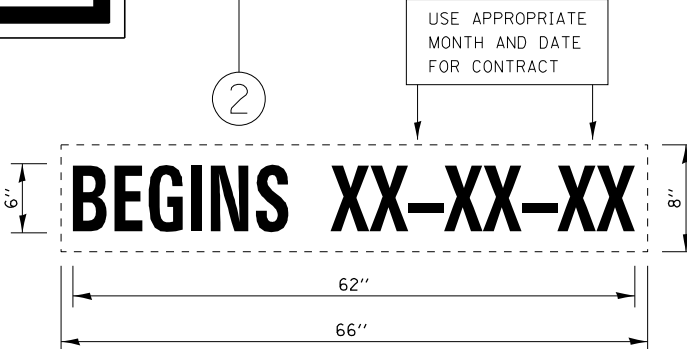
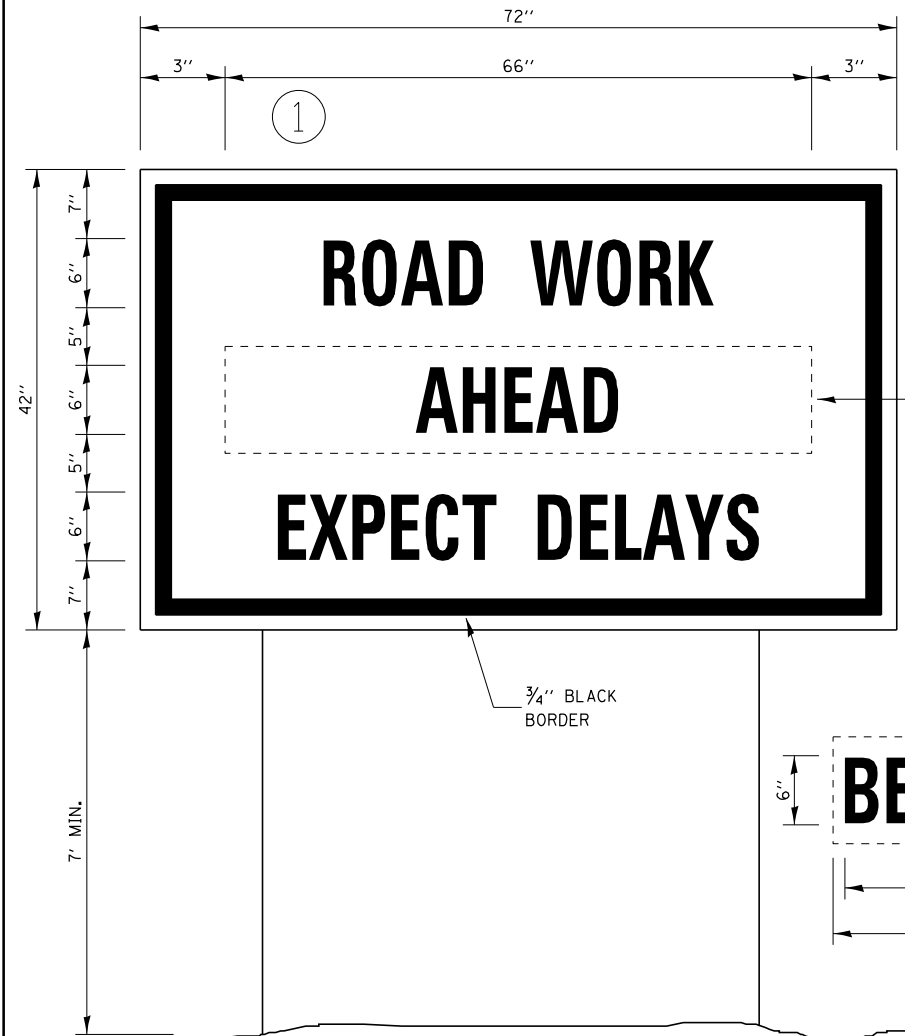
MODEL: Default
 FILE NAME: p:\project-cw-beadley.com\PIV\DOT\Documents\DOT Office\Dir\rdet_3\Project\036665\036665_1.dwg
 PROJECT: 036665

USER NAME = ronald.woodshank	DESIGNED - RW	REVISED -
	DRAWN - RW	REVISED -
PLOT SCALE = 100,0000' / in.	CHECKED - YP	REVISED -
PLOT DATE = 8/31/2022	DATE - 2/14/2022	REVISED -

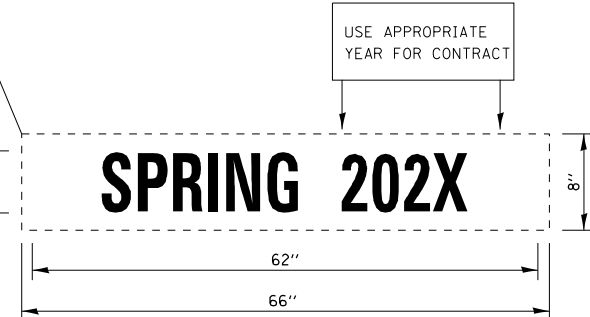
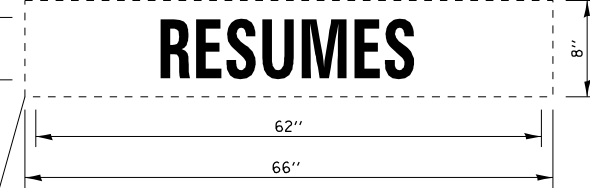
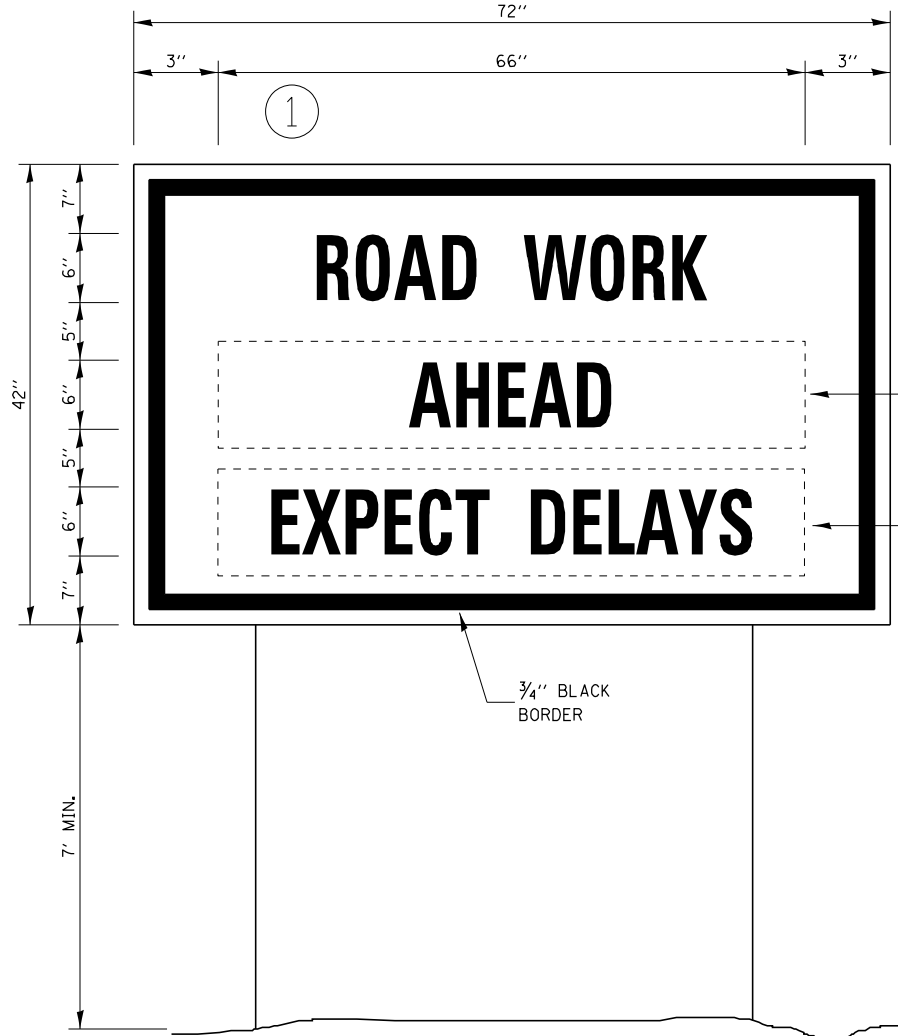
**STATE OF ILLINOIS
DEPARTMENT OF TRANSPORTATION**

PAVEMENT MARKING			
SCALE:	SHEET 1 OF 1 SHEETS	STA.	TO STA.

F.A.P. RTE. 311	SECTION (3BB)CLV	COUNTY LASALLE	TOTAL SHEETS 26	SHEET NO. 21
			CONTRACT NO. 66M51	
ILLINOIS FED. AID PROJECT				



TEMPORARY INFORMATION SIGNING



WINTER SHUT DOWN SIGNING

NOTES:

- USE 6" D BLACK LETTERING ON FLOURESENT ORANGE BACKGROUND.
- ERECT SIGNS AT LOCATIONS IN ADVANCE OF THE "ROAD CONSTRUCTION AHEAD" SIGNS AS DIRECTED BY THE ENGINEER.
- ERECT SIGN ① WITH INSTALLED PANEL ② A MINIMUM OF ONE WEEK PRIOR TO THE START OF THE LANE CLOSURE.
- REMOVE PANEL ② ON THAT DATE.
- SEE SPECIAL PROVISION "TEMPORARY INFORMATION SIGNING" FOR ADDITIONAL INFORMATION.
- WILL BE PAID FOR PER SQ FT AS "TEMPORARY INFORMATION SIGNING". EACH SIGN = 21 SQ FT AND THE DATE PANEL ② WILL NOT BE MEASURED SEPARATELY FOR PAYMENT.

MODEL: Default
 FILE: \\nafe-pw\subject-pw-beadefy.com\FW\DOT\Documents\DOT Office\Dir\dr: 3\Project\10366645\10366645_10366645_10366645.dgn

USER NAME = ronald.woodshank	DESIGNED - RW	REVISED -
DRAWN - RW	REVISIONS -	
PLOT SCALE = 100,0000' / in.	CHECKED - YP	REVISIONS -
PLOT DATE = 8/31/2022	DATE - 2/14/2022	REVISIONS -

**STATE OF ILLINOIS
DEPARTMENT OF TRANSPORTATION**

TEMPORARY INFORMATION SIGNING

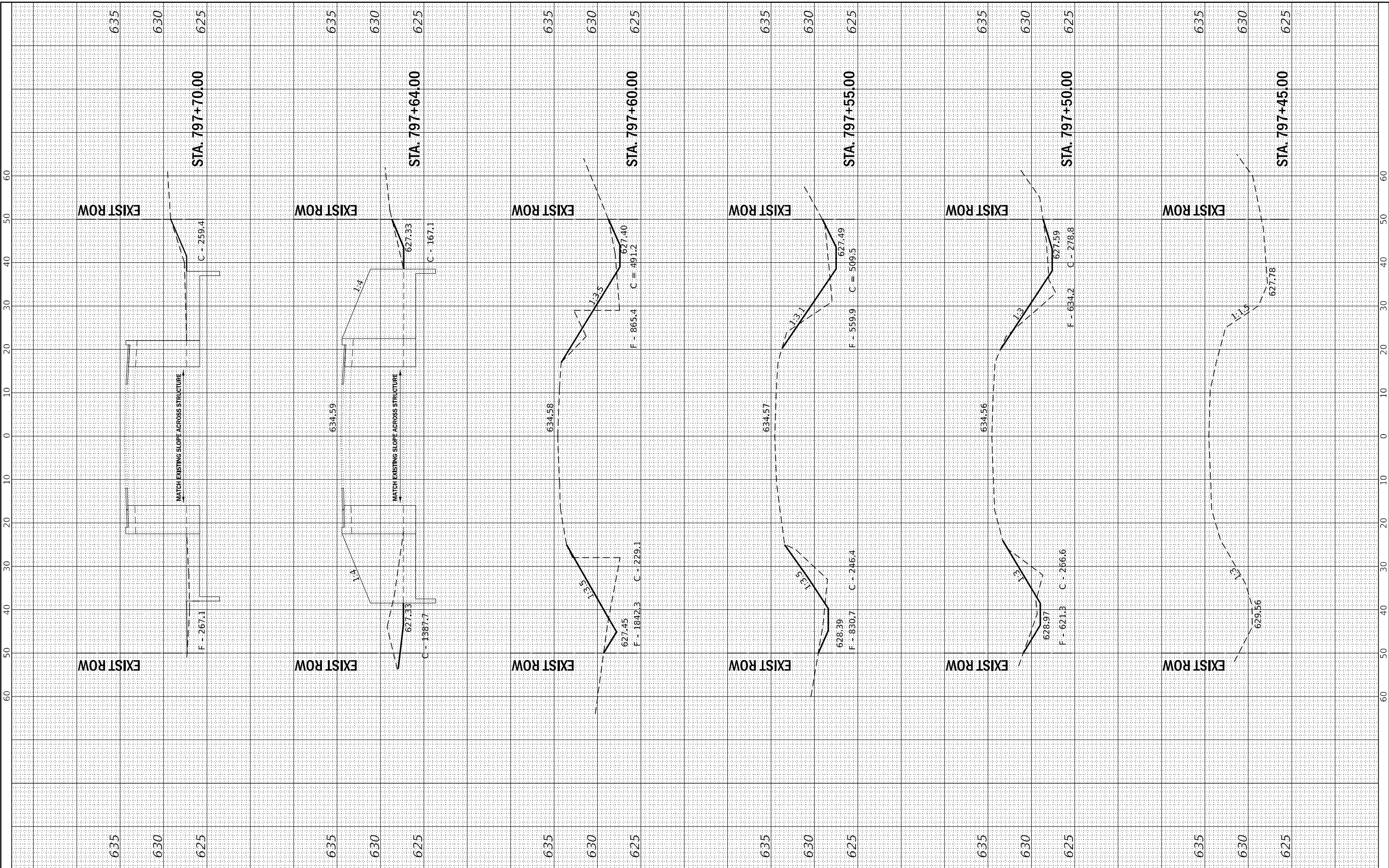
SCALE: SHEET 1 OF 1 SHEETS STA. TO STA.

F.A.P. RTE.	SECTION	COUNTY	TOTAL SHEETS	SHEET NO.
311	(3BB)CLV	LASALLE	26	22
CONTRACT NO. 66M51			ILLINOIS FED. AID PROJECT	

ORIGINAL SURVEY	DATE
SURVEYED	
PLOTTED	
TEMPLATE	
NO. _____	
AREAS CHECKED	

ORIGINAL SURVEY	DATE
SURVEYED	
PLOTTED	
TEMPLATE	
NO. _____	
AREAS CHECKED	

MODEL: Default
FILE: \\aarc\p\illinois\barber\com\PMDD01\Documents\1001\Office\06\06\13\3066\MS\1\CA000\010\3066MS-1\01005.dgn



USER NAME = ronald.woodshank	DESIGNED -	REVISED -
PLOT SCALE = 100,0000' / in.	DRAWN -	REVISED -
PLOT DATE = 8/31/2022	CHECKED -	REVISED -
	DATE -	REVISED -

**STATE OF ILLINOIS
DEPARTMENT OF TRANSPORTATION**

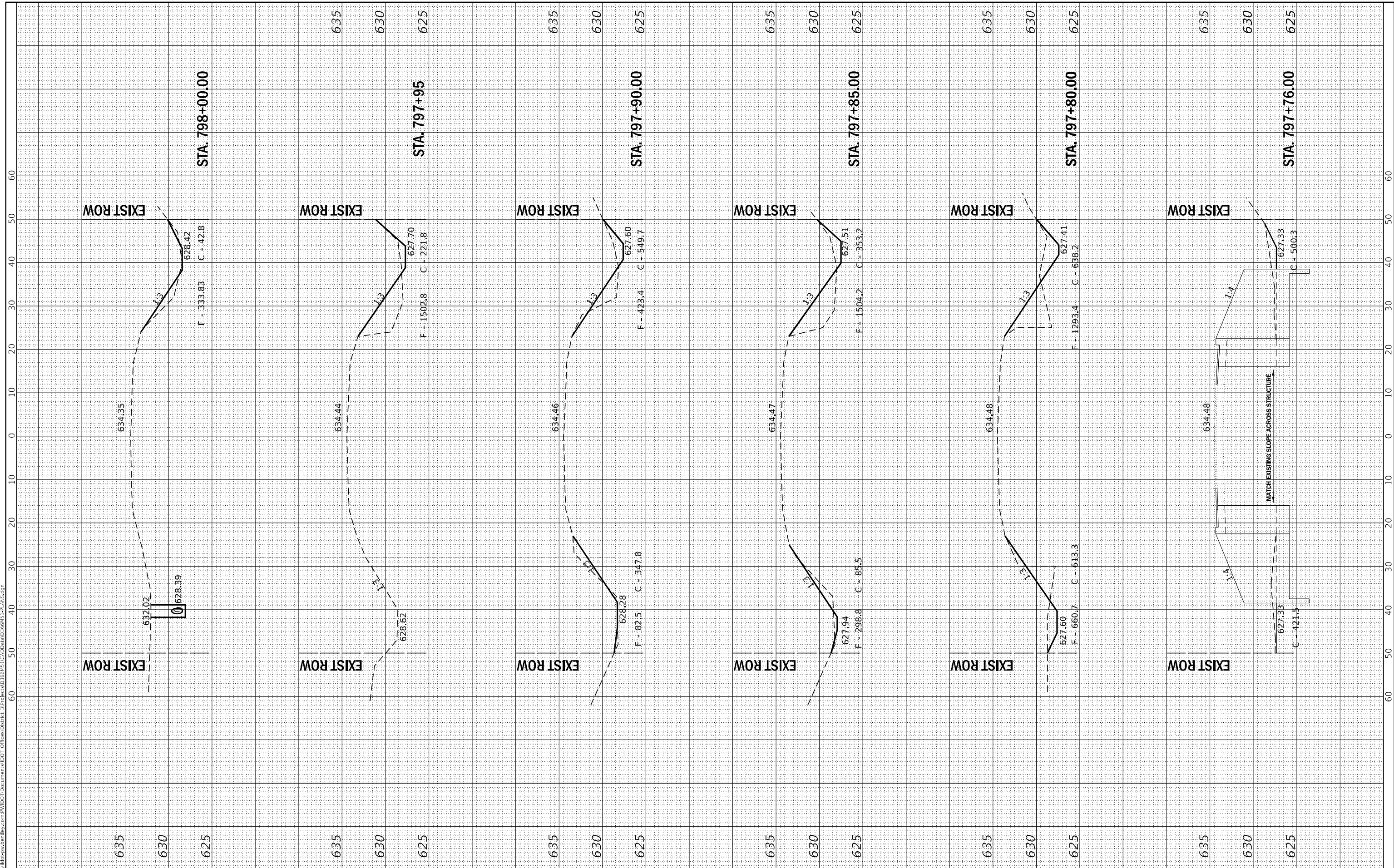
CROSS SECTIONS FOR STRUCTURE NO. 050-2574	
SCALE:	SHEET 1 OF 3 SHEETS STA. TO STA.

F.A.P. RTE. 311	SECTION (3BB)CLV	COUNTY LASALLE	TOTAL SHEETS 26	SHEET NO. 24
CONTRACT NO. 66M51				
ILLINOIS FED. AID PROJECT				

FINAL SURVEY NO.	DATE
SURVEYED	
PLOTTED	
TEMPLATE	
AREAS CHECKED	

ORIGINAL SURVEY NO.	DATE
SURVEYED	
PLOTTED	
TEMPLATE	
AREAS CHECKED	

MODEL: Default
FILE: i:\a\m\c...
PLOT DATE: 8/31/2022



USER NAME = ronald.woodshank	DESIGNED -	REVISED -
PLOT SCALE = 100,000' / in.	DRAWN -	REVISED -
PLOT DATE = 8/31/2022	CHECKED -	REVISED -
	DATE -	REVISED -

**STATE OF ILLINOIS
DEPARTMENT OF TRANSPORTATION**

CROSS SECTIONS FOR STRUCTURE NO. 050-2574	
SCALE:	TO STA.
SHEET 2 OF 3 SHEETS	STA. TO STA.

F.A.P. RTE. 311	SECTION (3BB)CLV	COUNTY LASALLE	TOTAL SHEETS 26	SHEET NO. 25
ILLINOIS FED. AID PROJECT			CONTRACT NO. 66M51	

