

F.A.I. RTE.	SECTION	COUNTY	TOTAL SHEETS	SHEET NO.
90/94/290	2013-0741	COOK	98	1
ILLINOIS		CONTRACT NO. 60X62		

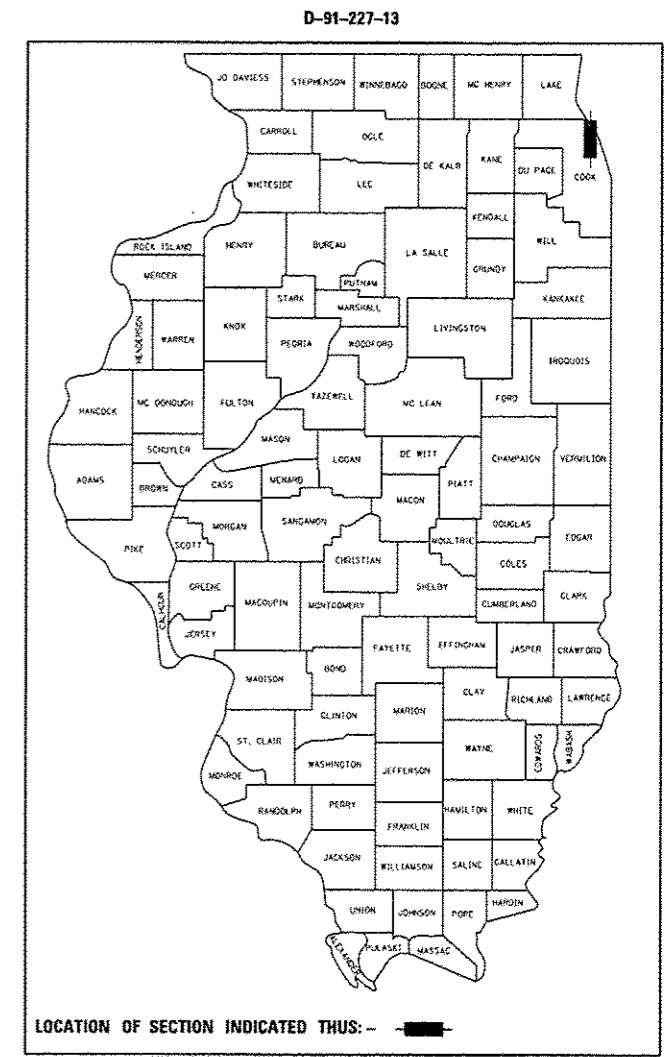
FOR INDEX OF SHEETS AND STANDARDS SEE SHEET NO. 2

DESIGN DESIGNATIONS: PEORIA STREET 0(2040) LOCAL STREET (URBAN)
 POSTED /DESIGN SPEEDS: N/A

STATE OF ILLINOIS
 DEPARTMENT OF TRANSPORTATION
 DIVISION OF HIGHWAYS

**PROPOSED
 HIGHWAY PLANS**

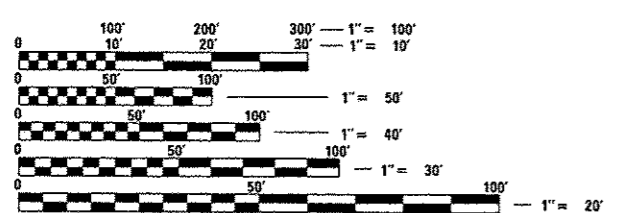
PEORIA STREET AESTHETICS AT
 FAI-290 / CONGRESS PARKWAY (I-90/94/290)
 (CIRCLE INTERCHANGE)
 SECTION 2013-0741
 MISCELLANEOUS LANDSCAPING, KNEE WALL
 PROJECT: ACNHPP-000V(002)
 COOK COUNTY
 C-91-150-14



Jennifer M. Golemba 8/15/14
 JENNIFER M. GOLEMB A
 LICENSE EXPIRES 11/30/2015
 SHEET RANGE 1-47, 55-58

Waseen Li 8/15/14
 DAJIN LIU
 LICENSE EXPIRES 11/30/2014
 SHEET RANGE 48-54

DISTRICT 1 DESIGN /CONSULTANT SERVICES: BRIAN KUTTAB, P.E. (847)705-4431 SCHAUMBURG, ILLINOIS

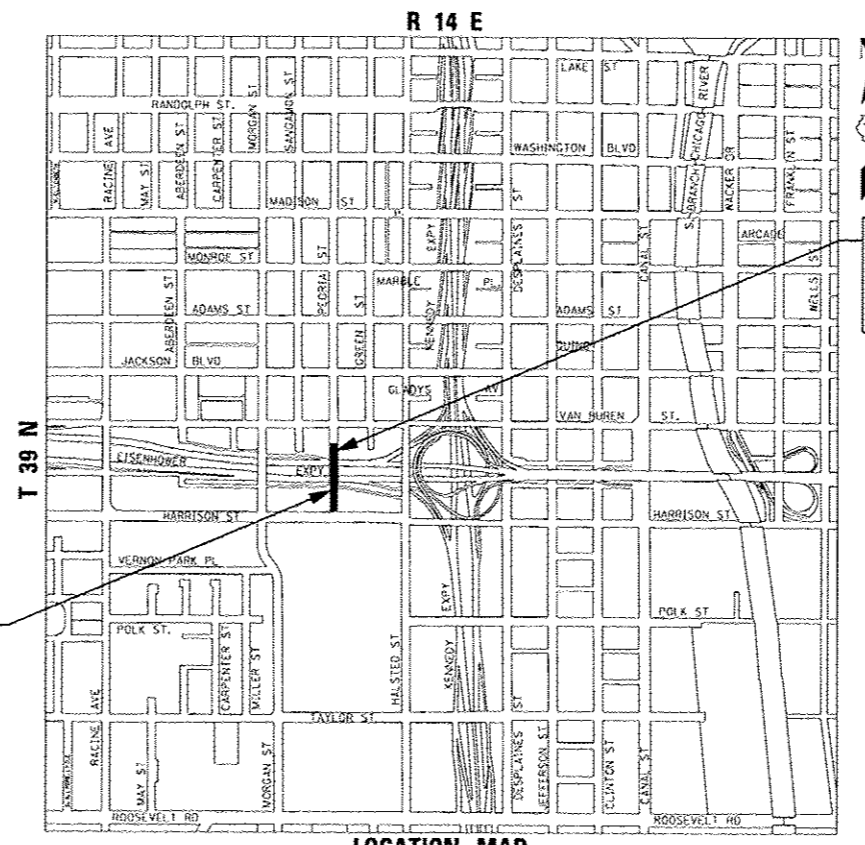


FULL SIZE PLANS HAVE BEEN PREPARED USING STANDARD ENGINEERING SCALES. REDUCED SIZED PLANS WILL NOT CONFORM TO STANDARD SCALES. IN MAKING MEASUREMENTS ON REDUCED PLANS, THE ABOVE SCALES MAY BE USED.

C.U.A.N.
 CHICAGO UTILITY ALERT NETWORK
 1-312-744-7000

NPDES PERMIT INFORMATION	
NPDES Disturbed	
Area =	1.02 Acres
Approximate Location of Roadway is :	
Longitude	87° 38' 58.22" W
Latitude	41° 52' 31.87" N

PEORIA STREET BRIDGE OMISSION
 SN 016-1708
 STA 3702 + 57.64 TO
 STA 3705 + 30.73



LOCATION MAP
 NOT TO SCALE
 THE PROJECT IS LOCATED IN THE CITY OF CHICAGO
 GROSS LENGTH = 648.02 FT (0.123 MILES)
 NET LENGTH = 374.93 FT (0.071 MILES)

PEORIA STREET:
 STA 3700 + 03.04 TO
 STA 3706 + 51.06



STATE OF ILLINOIS
 DEPARTMENT OF TRANSPORTATION
 DIVISION OF HIGHWAYS

SUBMITTED August 11 20 14
John P. Antonino
 DEPUTY DIRECTOR OF HIGHWAYS, REGION ENGINEER

Oct 17 20 14
John D. Baranzelli, P.E.
 acting ENGINEER OF DESIGN AND ENVIRONMENT

Oct 17 20 14
Omer Osman, P.E.
 DIRECTOR OF HIGHWAYS, CHIEF ENGINEER

PRINTED BY THE AUTHORITY
 OF THE STATE OF ILLINOIS