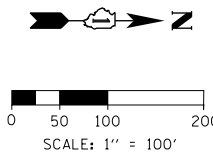
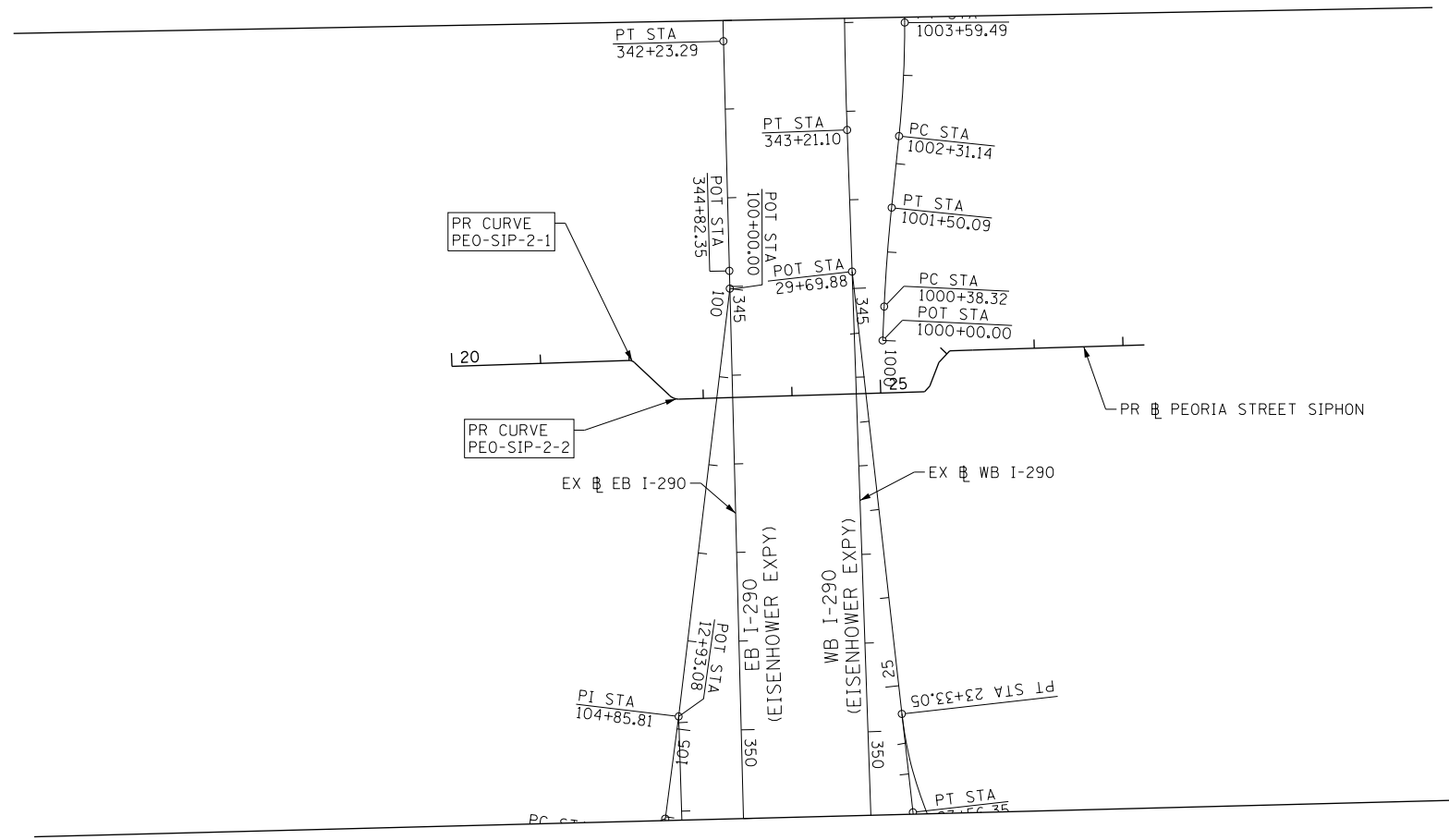


FILE PATH = p:\388035-p\m\1\escomon\me\local\PEO-SIP-2\Documents\01_Americas\Transportation\60269938_Circle\Phase_1\1000_CAD\006_Roadway_Sheets\60X62_Contract\0160X62-Sht-ATB-06.dgn



PEO-SIP-2				
POINT	DESCRIPTION	STATION	NORTHING	EASTING
POT		20+00.00	1,897,592.5361	1,170,498.6879
PC	PEO-SIP-2-1	22+00.13	1,897,792.5550	1,170,492.1566
PI	PEO-SIP-2-1	22+03.45	1,897,795.8806	1,170,492.0480
PT	PEO-SIP-2-1	22+06.43	1,897,798.3023	1,170,494.3298
PC	PEO-SIP-2-2	22+60.78	1,897,837.8544	1,170,531.5977
PI	PEO-SIP-2-2	22+66.99	1,897,842.3790	1,170,535.8609
PT	PEO-SIP-2-2	22+72.56	1,897,848.5928	1,170,535.6737
PI		25+49.46	1,898,125.3678	1,170,527.3345
PI		25+58.29	1,898,131.4107	1,170,520.9047
PI		25+86.65	1,898,141.4457	1,170,494.3806
PI		26+04.51	1,898,153.6828	1,170,481.3601
PI		26+30.31	1,898,179.4937	1,170,480.5615
PI		28+24.28	1,898,373.3447	1,170,474.6693

PROP. CURVE PEO-SIP-2-1
 PI STA. = 22+03.45
 $\Delta = 45^\circ 10' 01''$ (RT)
 D = 716' 11' 50"
 R = 8.00'
 T = 3.33'
 L = 6.31'
 E = 0.66'
 e = ----
 T.R. = ----
 P.C. STA = 22+00.13
 P.T. STA = 22+06.43

PROP. CURVE PEO-SIP-2-2
 PI STA. = 22+66.99
 $\Delta = 45^\circ 01' 21''$ (LT)
 D = 381' 58' 19"
 R = 15.00'
 T = 6.22'
 L = 11.79'
 E = 1.24'
 e = ----
 T.R. = ----
 P.C. STA = 22+60.78
 P.T. STA = 22+72.56



DI60X62-Sht-ATB-06.dgn	DESIGNED - JLV	REVISED -
USER NAME = BAW:tor.t	DRAWN - BAW	REVISED -
PLOT SCALE = 200.0000' / in.	CHECKED - JMG	REVISED -
PLOT DATE = 8/19/2014	DATE - 8/20/2014	REVISED -

**STATE OF ILLINOIS
DEPARTMENT OF TRANSPORTATION**

ALIGNMENT, TIES AND BENCHMARKS			
SCALE: 1" = 100'	SHEET 6	OF 9 SHEETS	STA. TO STA.

F.A.I. RTE.	SECTION	COUNTY	TOTAL SHEETS	SHEET NO.
90/94/290	2013-0741	COOK	58	15
CONTRACT NO. 60X62				
ILLINOIS FED. AID PROJECT				