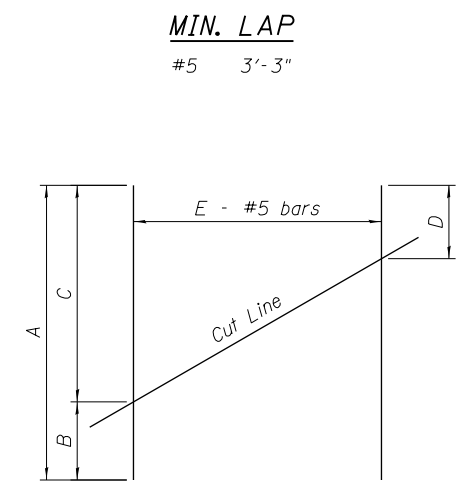
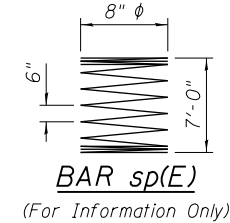
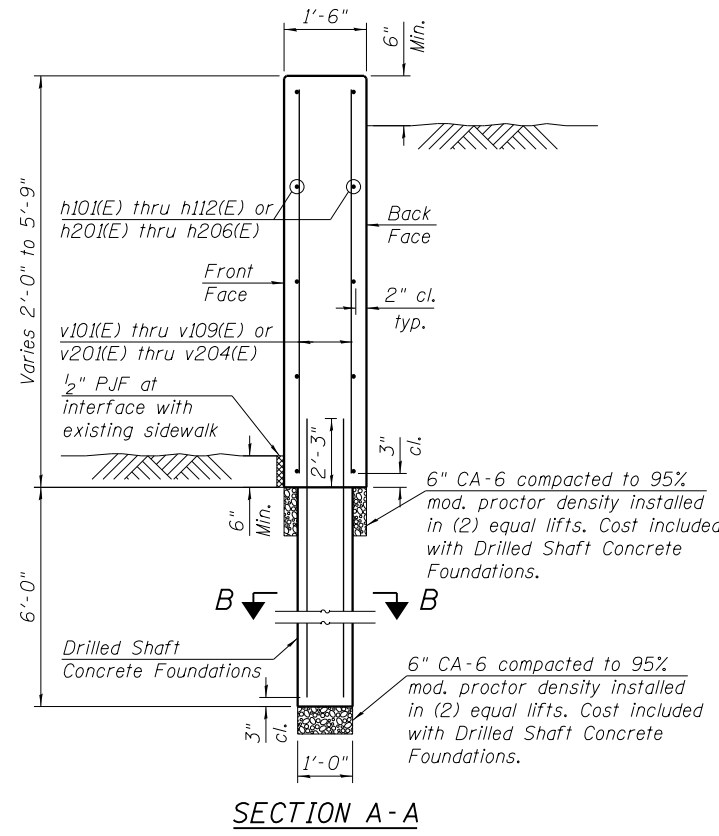
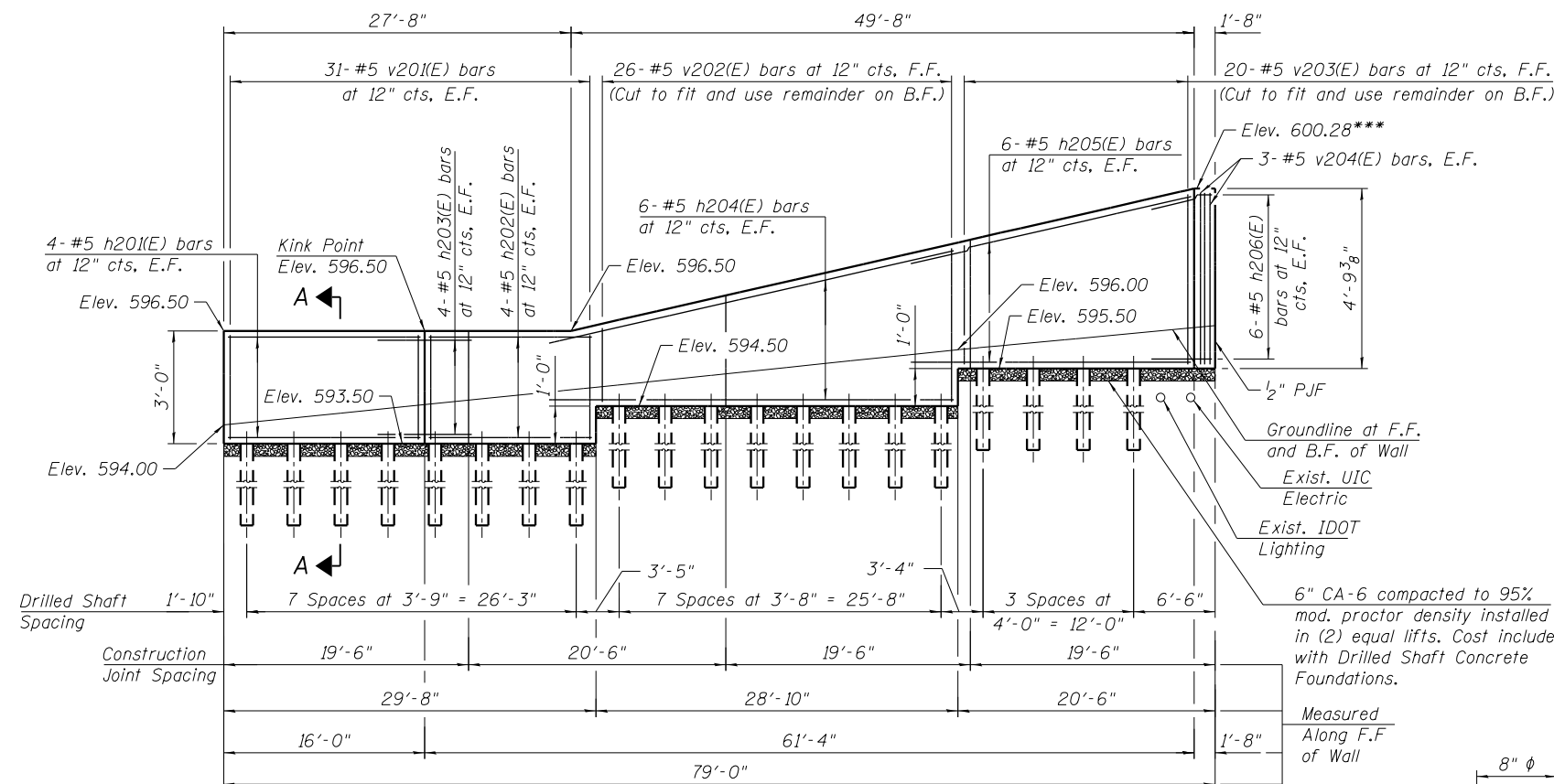


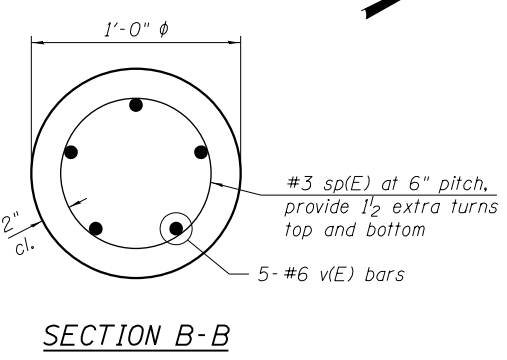
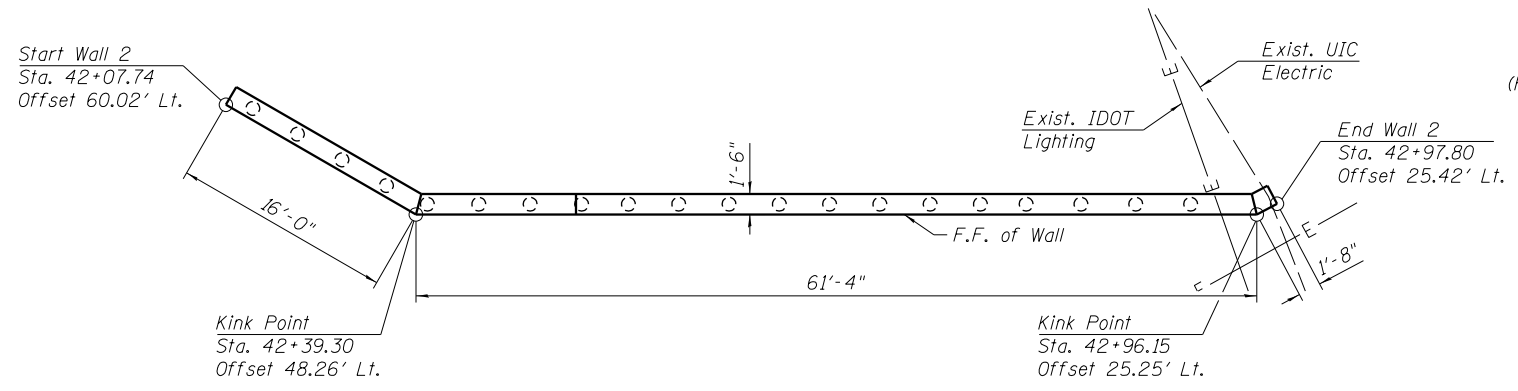
BILL OF MATERIAL - WALLS 1 & 2

Bar	No.	Size	Length	Shape
h101(E)	12	#5	10'-8"	—
h102(E)	2	#5	9'-8"	—
h103(E)	14	#5	7'-10"	—
h104(E)	8	#5	45'-3"	—
h105(E)	6	#5	19'-10"	—
h106(E)	8	#5	7'-10"	—
h107(E)	8	#5	21'-6"	—
h108(E)	8	#5	41'-10"	—
h109(E)	10	#5	41'-2"	—
h110(E)	12	#5	26'-9"	—
h111(E)	12	#5	7'-8"	—
h112(E)	12	#5	8'-2"	—
h201(E)	8	#5	15'-3"	—
h202(E)	8	#5	12'-11"	—
h203(E)	8	#5	7'-8"	—
h204(E)	12	#5	32'-2"	—
h205(E)	12	#5	22'-5"	—
h206(E)	12	#5	4'-8"	—
v101(E)	4	#5	4'-6"	—
v102(E)	20	#5	5'-2"	—
v103(E)	21	#5	7'-10"	—
v104(E)	54	#5	2'-8"	—
v105(E)	23	#5	4'-10"	—
v106(E)	40	#5	3'-7"	—
v107(E)	42	#5	4'-6"	—
v108(E)	28	#5	7'-3"	—
v109(E)	20	#5	4'-2"	—
v201(E)	62	#5	2'-7"	—
v202(E)	26	#5	5'-9"	—
v203(E)	20	#5	7'-4"	—
v204(E)	6	#5	4'-4"	—
			Cu. Yd.	50.4
			Sq. Ft.	1,328
			Sq. Yd.	249
			Pound	5,090
			Cu. Yd.	11.9



Bar	A	B	C	D	E
v103(E)	7'-10"	2'-8"	5'-2"	2'-8"	21
v105(E)	4'-10"	2'-2"	2'-8"	2'-2"	23
v106(E)	3'-7"	1'-5"	2'-2"	1'-5"	40
v107(E)	4'-6"	1'-5"	3'-1"	1'-5"	42
v108(E)	7'-3"	3'-1"	4'-2"	3'-1"	28
v202(E)	5'-9"	1'-9"	4'-0"	1'-9"	26
v203(E)	7'-4"	3'-0"	4'-4"	3'-0"	20

*** Match top of existing bridge parapet



BARS h103(E), h106(E), h111(E), h203(E) and h206(E)

Bar	A	B	C
h103(E)	3'-11"	3'-11"	2'-9 1/4"
h106(E)	3'-11"	3'-11"	2'-5 5/8"
h111(E)	3'-10"	3'-10"	1'-10 7/8"
h203(E)	3'-10"	3'-10"	1'-11"
h206(E)	3'-6"	1'-2"	6 1/2"

Notes:
 Drilled shaft foundations shall be constructed according to the applicable requirements of Sections 503 and 516.
 When obstructions are encountered, the Contractor shall request to relocate the foundation. Any abandoned holes shall be backfilled to the satisfaction of the Engineer. Backfill will be paid for according to Article 109.04.
 The contract unit price for "Drilled Shaft Concrete Foundations" shall include: All necessary excavation or drilling (except in rock); backfilling with excavated material; disposal of unsuitable or surplus material; formwork; and furnishing and placing the Concrete, reinforcement bars.
 Minimum required service bearing pressure is 2.0 KSF. If actual factored resistance is less than required factored resistance, the Engineer shall be notified.
 Preformed Flexible Foam Expansion Joint Filler (called out as RJF in plans) shall follow Article 1051.09 of IDOT Standard Specifications. Cost included with Concrete Structures.
 Skate deterrents shall be spaced at ±2'-0" centers. See Detail B on sheet 5 of 7. Cost included with Concrete Structures.
 Rubbed Finish shall be applied to the F.F. and top of wall only.

BILL OF MATERIAL - DRILLED SHAFTS (WALLS 1 & 2)
 (For Information Only)

Bar	No.	Size	Length	Shape
sp(E)	67	#3	7'-0"	—
v(E)	335	#6	8'-0"	—
			Pound	4,785

* Length is height of spiral

1:50:46 PM 01/17/08-60x62-5003-Wall2.dgn



USER NAME = BAWItoft	DESIGNED = WJC	REVISED
PLOT SCALE = 14.0000' / in.	CHECKED = DL	REVISED
PLOT DATE = 8/19/2014	DRAWN = WJC	REVISED
	CHECKED = DL/KAH	REVISED

**STATE OF ILLINOIS
 DEPARTMENT OF TRANSPORTATION**

**RETAINING WALL 2
 PLAN AND ELEVATION**

SHEET NO. 3 OF 7 SHEETS

MUN	SECTION	COUNTY	TOTAL SHEETS	SHEET NO.
2090	2013-0741	COOK	58	50
CONTRACT NO.			60X62	
ILLINOIS FED. AID PROJECT				