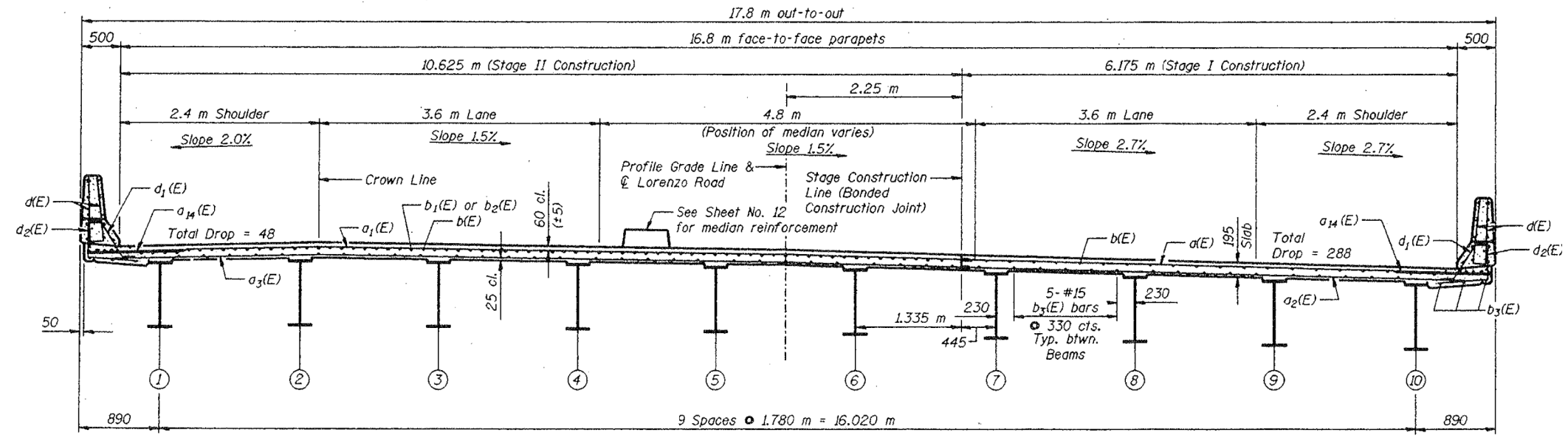
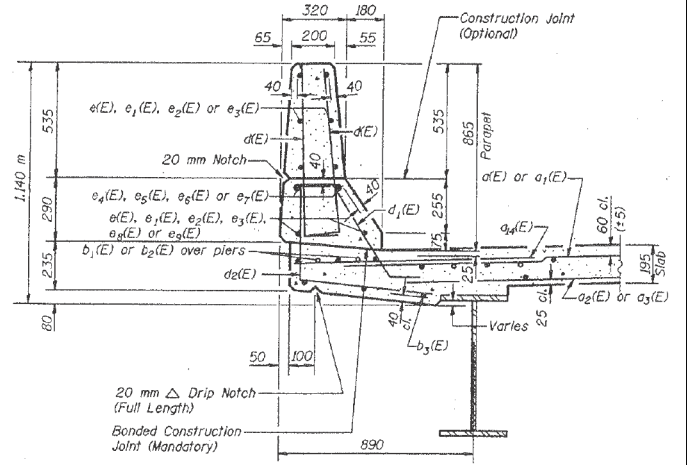


MINIMUM BAR LAPS
 #15 = 640
 #20 = 790

DECK PLAN



CROSS SECTION
(Looking East)



SECTION THRU PARAPET

FILE NAME =	USER NAME = osbornnp	DESIGNED -	REVISED -	STATE OF ILLINOIS DEPARTMENT OF TRANSPORTATION	TYPICAL CROSS SECTION & DECK PLAN VIEW LOCATION 19: SN 099-0193				RT#	SECTION	COUNTY	TOTAL SHEETS	SHEET NO.
Default	Default	DRAWN -	REVISED -						VARIOUS	2014-0351	WILL	50	29
		CHECKED -	REVISED -		SCALE: SHEET OF SHEETS STA. TO STA.				CONTRACT NO. 60Y29				
		DATE -	REVISED -		ILLINOIS FED. AID PROJECT								