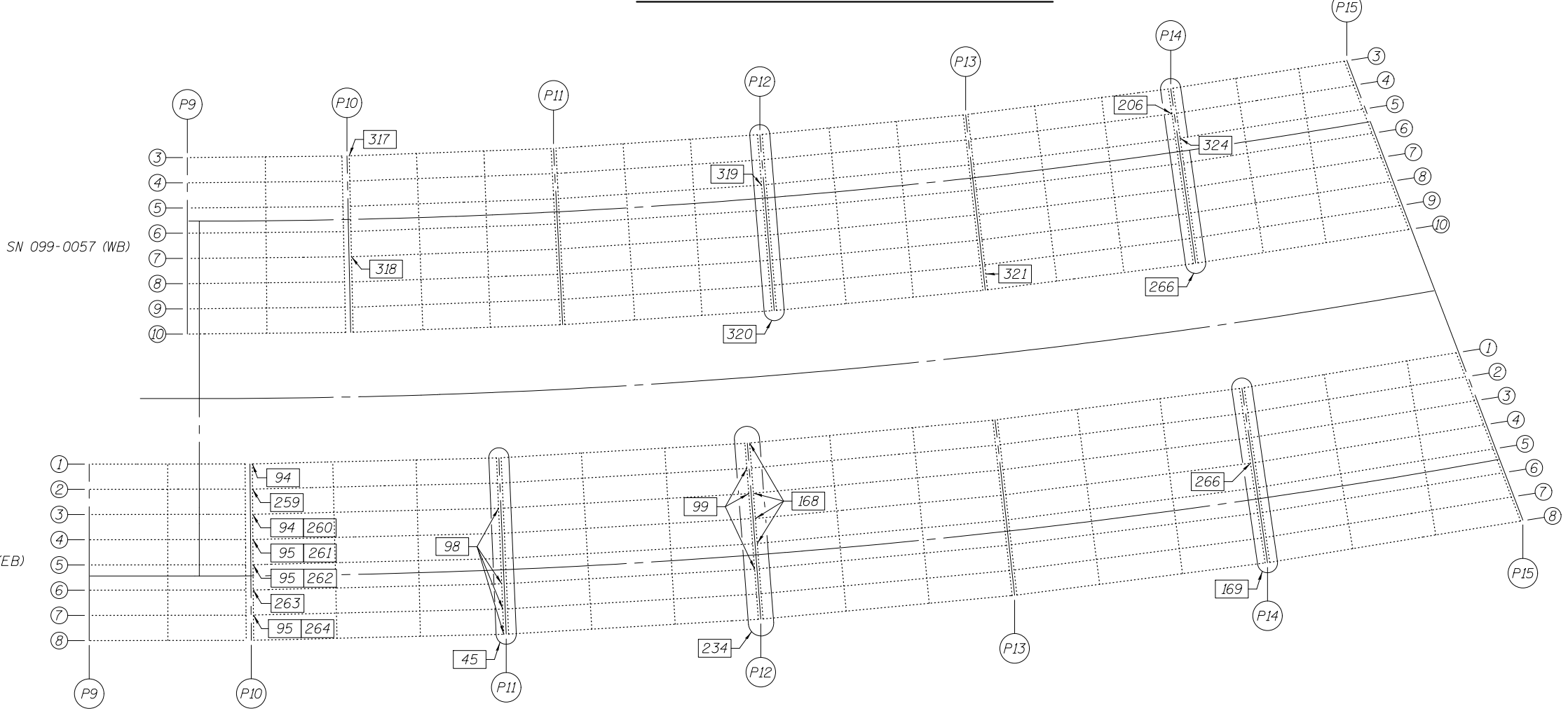


FRAMING PLAN - TRUSS SPANS 7 THRU 9



FRAMING PLAN - EAST APPROACH SPANS 10 THRU 15

DESIGNED - GGE
 CHECKED - TLC
 DRAWN - Kyle M. Steffen/balva
 CHECKED - GGE TLC

EXAMINED
 PASSED
 ACTING ENGINEER OF STRUCTURAL SERVICES
 ACTING ENGINEER OF BRIDGES AND STRUCTURES

DATE - OCTOBER 17, 2014

STATE OF ILLINOIS
 DEPARTMENT OF TRANSPORTATION

FRAMING PLAN - SPANS 7 THRU 15
 SN 099-0056 (E.B.) & 099-0057 (W.B.)

SHEET NO. 2 OF 24 SHEETS

F.A.I. RTE.	SECTION	COUNTY	TOTAL SHEETS	SHEET NO.
80	99-3-BR-2	WILL	57	5
CONTRACT NO. 60Y64			ILLINOIS FED. AID PROJECT	