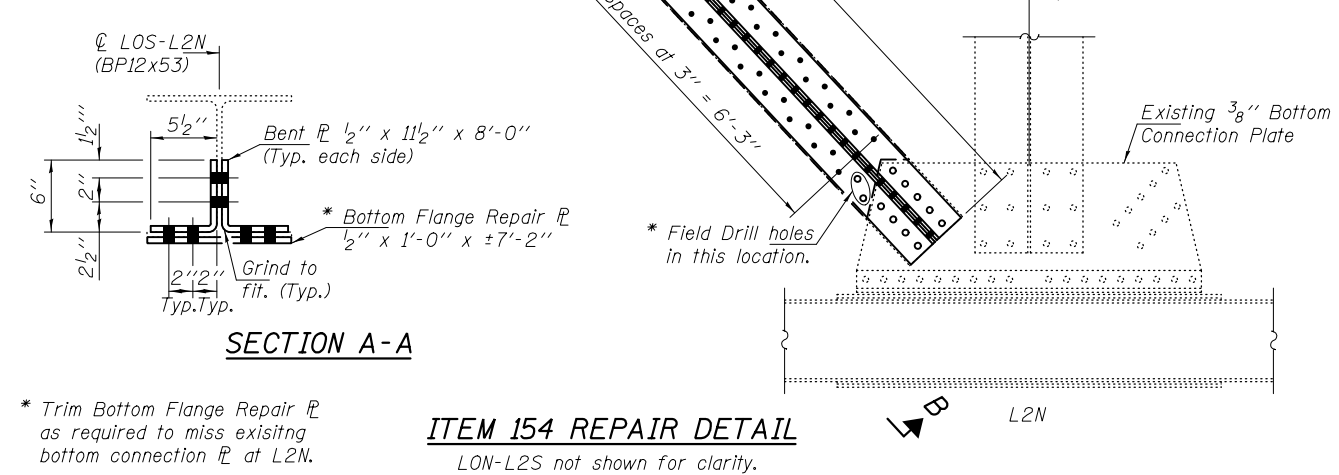
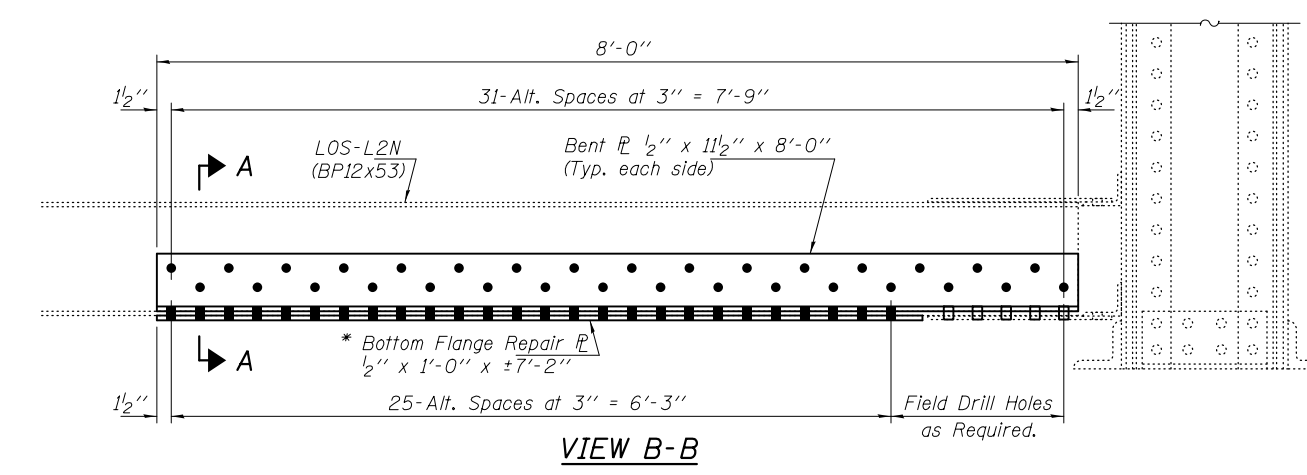
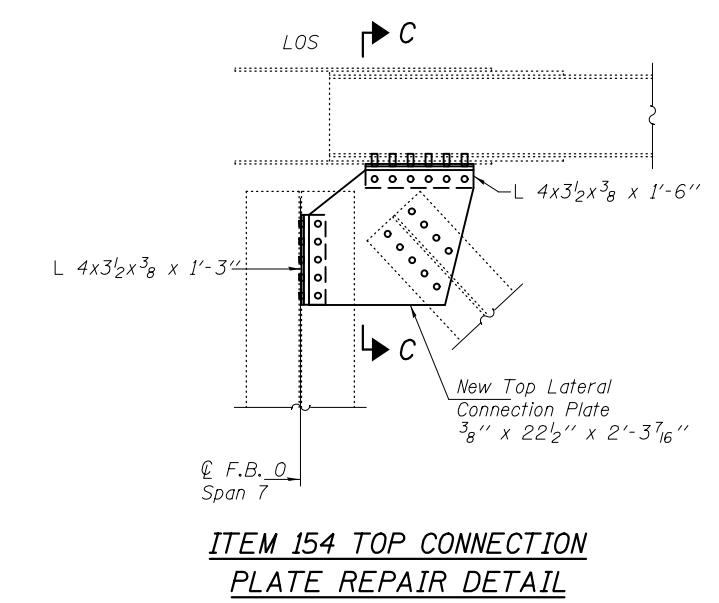
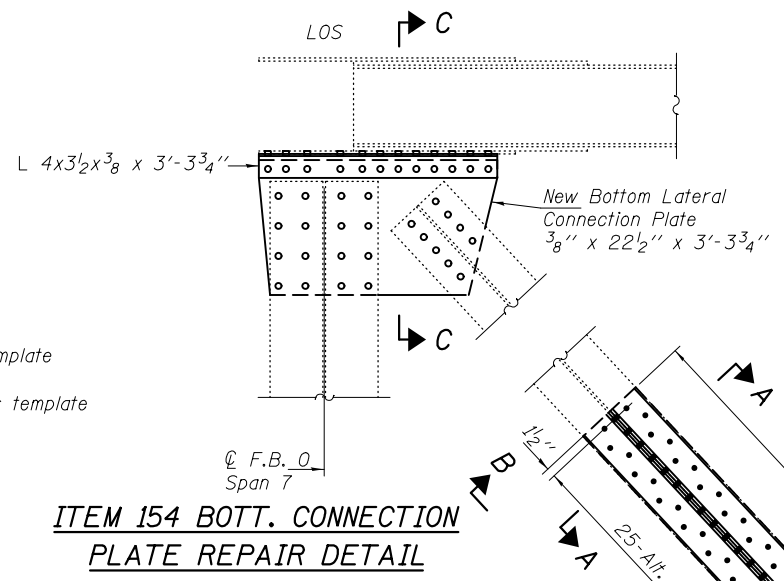


BOLT HOLE LEGEND

- - Use holes in new steel as template
- - Use holes in existing steel as template



* Trim Bottom Flange Repair PL as required to miss existing bottom connection PL at L2N.

ITEM 154 REPAIR DETAIL
LON-L2S not shown for clarity. (SN 099-0057)

DESIGNED - GGE	EXAMINED - <i>Timothy A. Daulton</i>	DATE - OCTOBER 17, 2014
CHECKED - TLC	ACTING ENGINEER OF STRUCTURAL SERVICES	
DRAWN - Kyle M. Steffen/balva	PASSED - <i>Carl Berger</i>	
CHECKED - GGE TLC	ACTING ENGINEER OF BRIDGES AND STRUCTURES	

STATE OF ILLINOIS
DEPARTMENT OF TRANSPORTATION

REPAIR DETAIL 120 & 154
SN 099-0056 & 0057
SHEET NO. 6 OF 24 SHEETS

F.A.I. RTE.	SECTION	COUNTY	TOTAL SHEETS	SHEET NO.
80	99-3-BR-2	WILL	57	9
ILLINOIS FED. AID PROJECT			CONTRACT NO. 60Y64	