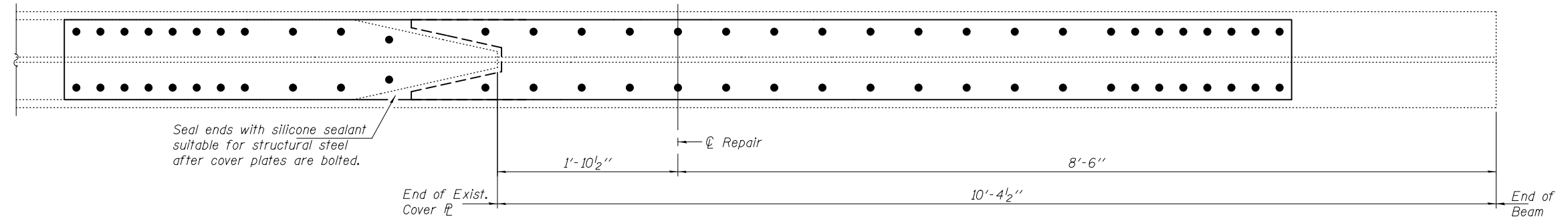
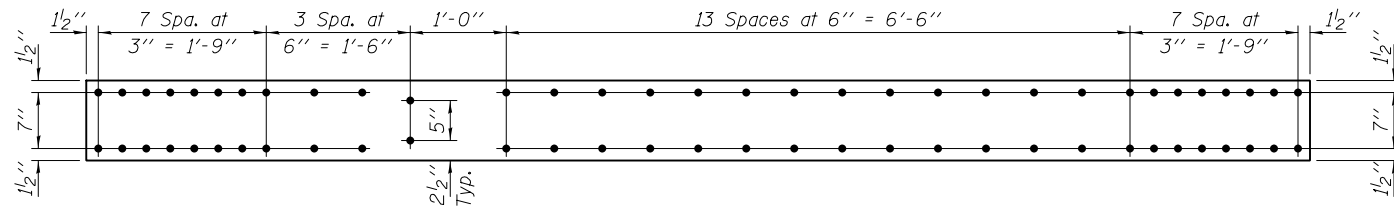


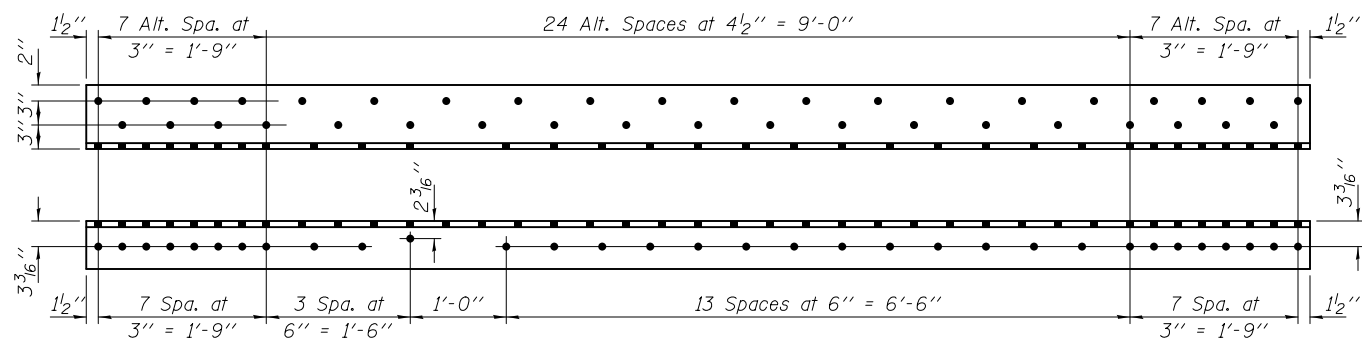
**ELEVATION - REPAIR DETAIL 180**  
(Looking North)



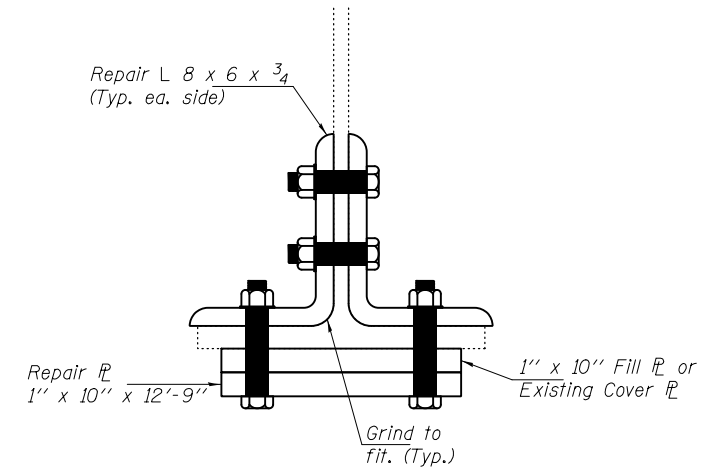
**PLAN - REPAIR DETAIL 180**  
Repair Angles not shown for clarity.



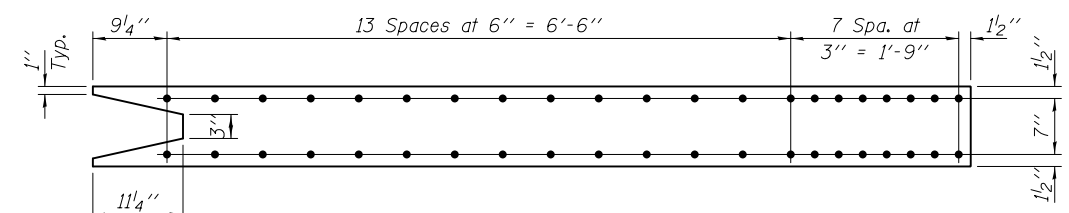
**REPAIR PLATE B**  
P 1" x 10" x 12'-9" (1-Required)



**REPAIR ANGLE B**  
L 8 x 6 x 3/4 x 12'-9" (2-Required)



**SECTION B-B**



**FILL PLATE B**  
P 1" x 10" x 9'-1 3/4" (1-Required)

DESIGNED - GGE	EXAMINED - <i>Timothy A. D... ACTING ENGINEER OF STRUCTURAL SERVICES</i>	DATE - OCTOBER 17, 2014	<b>STATE OF ILLINOIS DEPARTMENT OF TRANSPORTATION</b>		<b>REPAIR DETAIL 180 SN 099-0056</b>		F.A.I. RTE.	SECTION	COUNTY	TOTAL SHEETS	SHEET NO.
CHECKED - TLC	PASSED - <i>Carl... ACTING ENGINEER OF BRIDGES AND STRUCTURES</i>						80	99-3-BR-2	WILL	57	10
DRAWN - Kyle M. Steffen/balva			SHEET NO. 7 OF 24 SHEETS		ILLINOIS FED. AID PROJECT		CONTRACT NO. 60Y64				
CHECKED - GGE TLC											