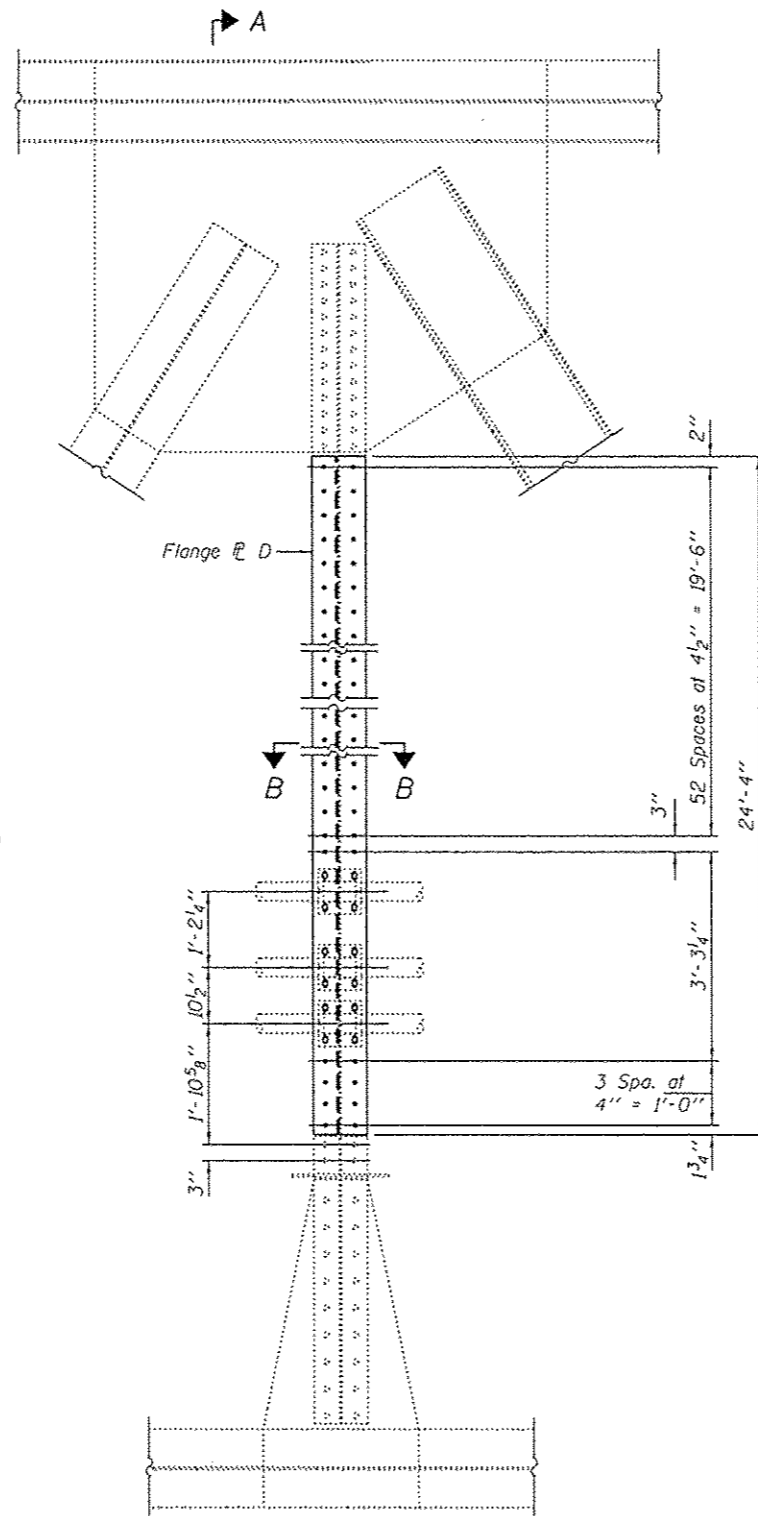
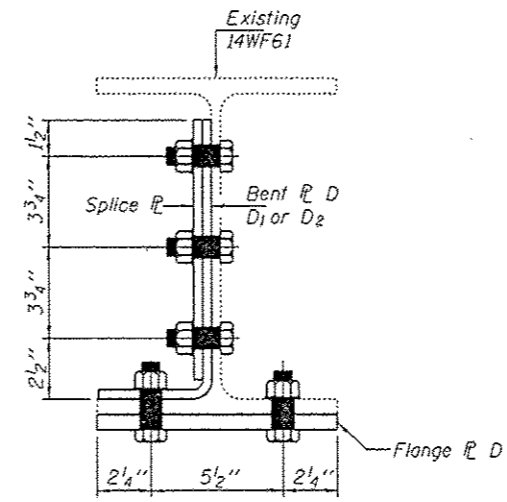


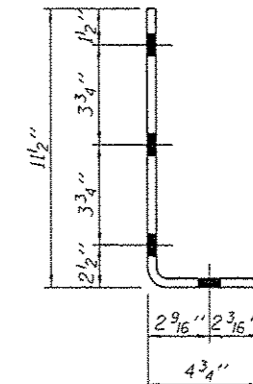
VIEW A-A



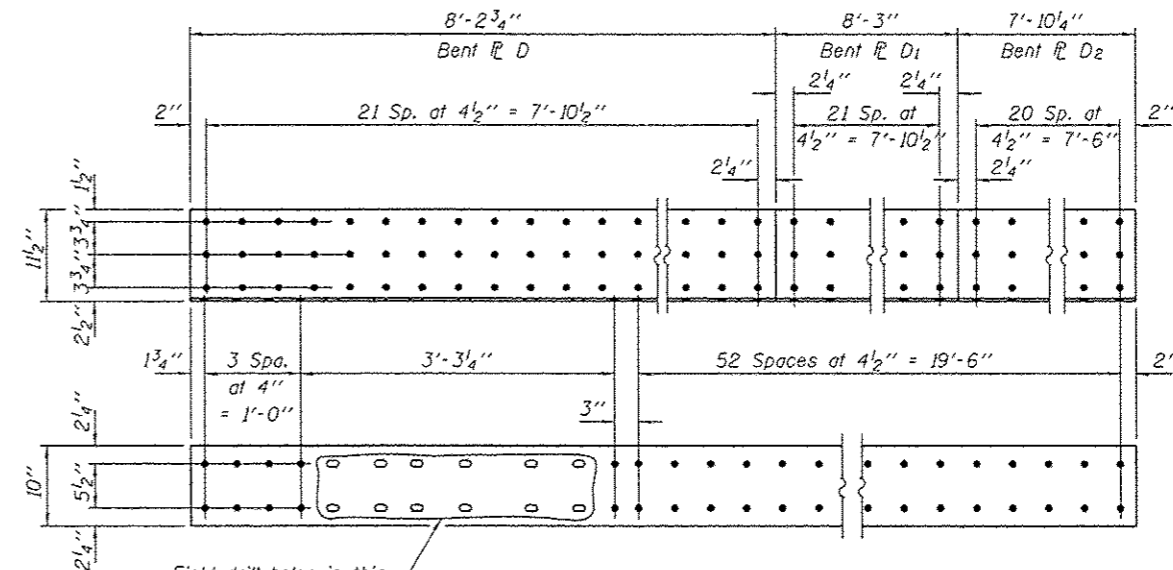
REPAIR 155 AT U22N-L22N  
(Looking North)



SECTION B-B



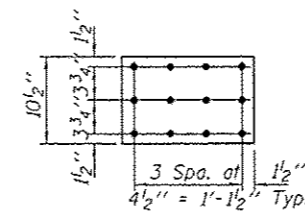
SECTION THRU BENT R D, D1 & D2



Field drill holes in this area using existing Rail Brackets as template.

**BENT R D, D1 & D2 & FLANGE R D**

- Bent R D, 3/8" x 1'-4 1/4" x 8'-2 3/4", 1 Required
- Bent R D1, 3/8" x 1'-4 1/4" x 8'-3", 1 Required
- Bent R D2, 3/8" x 1'-4 1/4" x 7'-10 1/4", 1 Required
- Flange R D, 5/8" x 10" x 24'-4", 1 Required



**SPLICE R**

- R 3/8" x 10 1/2" x 1'-4 1/2"
- (2 Required)

DESIGNED - GGE  
CHECKED - TLC  
DRAWN - Kyle M. Steffen/balvo  
CHECKED - GGE TLC

EXAMINED  
ACTING ENGINEER OF STRUCTURAL SERVICES  
PASSED  
ACTING ENGINEER OF BRIDGES AND STRUCTURES

DATE - OCTOBER 17, 2014

STATE OF ILLINOIS  
DEPARTMENT OF TRANSPORTATION

REPAIR DETAIL 155  
SN 099-0056

SHEET NO. 8 OF 24 SHEETS

F.A.I. RTE.	SECTION	COUNTY	TOTAL SHEETS	SHEET NO.
80	99-3-BR-2	WILL	57	11
CONTRACT NO. 60Y64				
ILLINOIS FED. AID PROJECT				