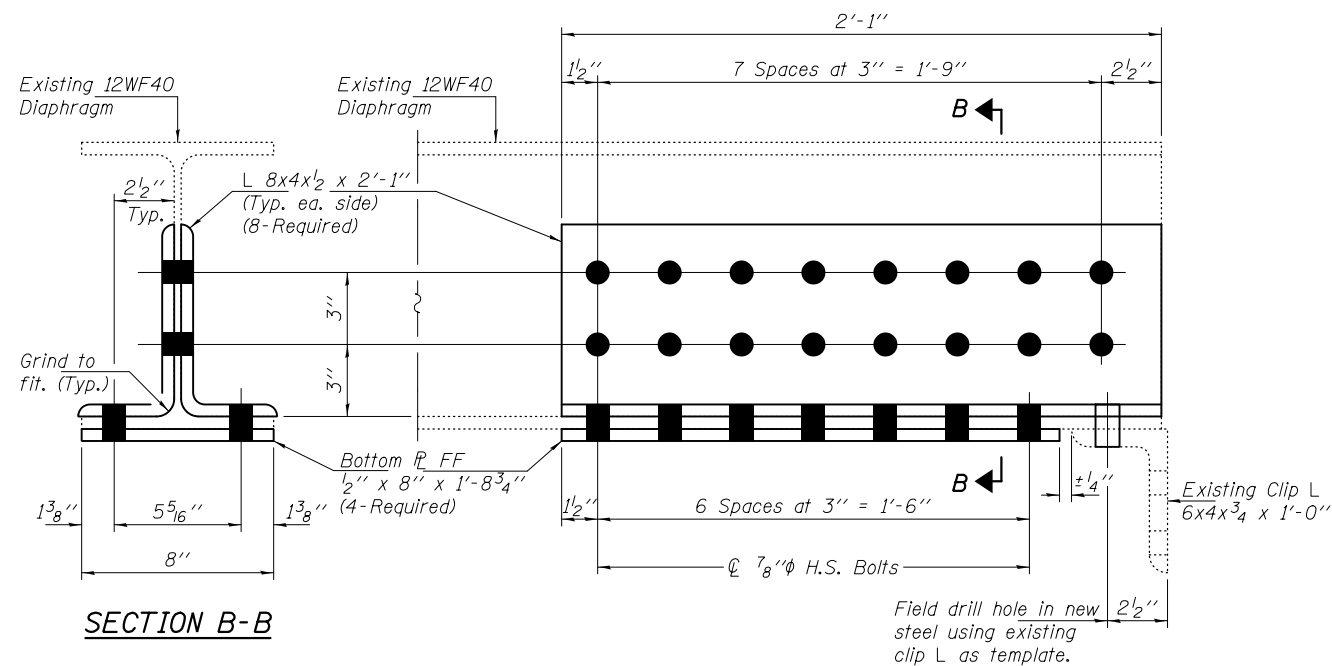
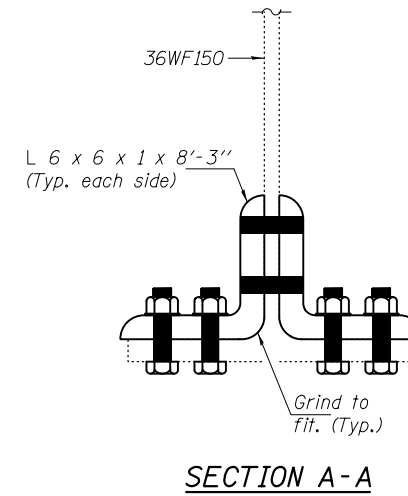


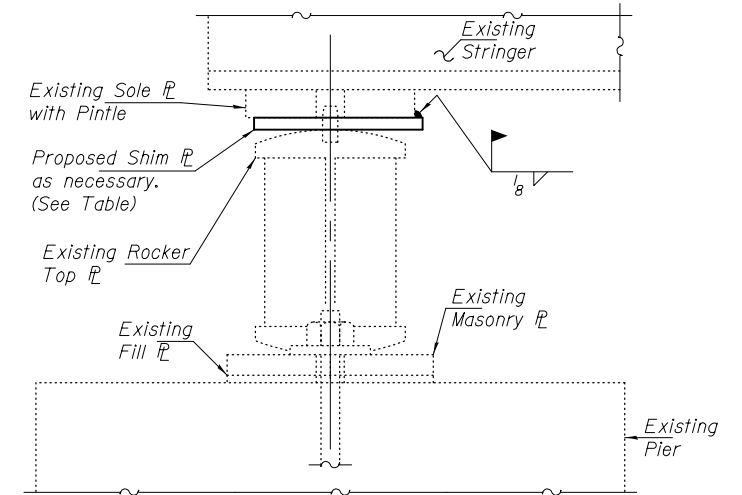
REPAIR 190 PLAN



REPAIR DETAIL 102, 119 & 270



SECTION A-A



REPAIR DETAIL 94, 95, 98, 99, 168, 266, 170, 171, 175, 110, 189

REPAIR PROCEDURE

1. Jack existing stringer 1/4" max.
2. Clean existing Bearing between Top of Rocker and Bottom of Sole PL, removing pack rust accumulation.
3. Lower Beams.
4. Provide shim between Sole PL and Rocker as necessary to ensure full Bearing contact between Sole PL and Rocker.

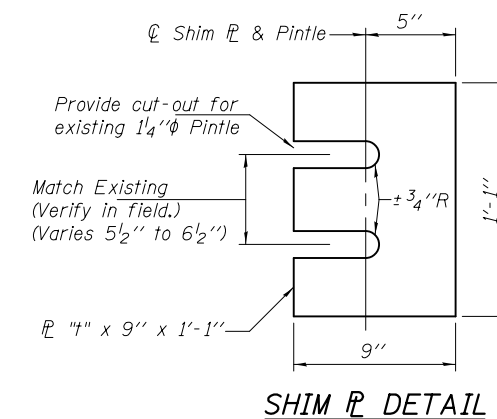
NOTES

1. See Special Provision Jack and Clean Bearings.
2. Cleaning existing Bearings and Shim PL's shall be included in the cost of Jack and Clean Bearings.
3. Shim PL's shall be AASHTO M270 Grade 36 (ASTM A36).

** Verify in field.

JACK & CLEAN BEARING SCHEDULE

NBIS Item No.	Location	Span	Girder	** "H"
94	Pier 10	11	1 & 3	1/8"
95	Pier 10	11	4, 5, 7	1/16"
98	Pier 11	11, 12	3, 6, 7, 8	1/4"
99	Pier 12	12	2, 3, 6	1/16"
168	Pier 12	13	1, 3, 4, 5	1/4"
266	Pier 14	14	4	1/16"
170	Pier 16	16	2	1/16"
171	Pier 16	17	2, 4, 5, 6	1/16"
175	Pier 19	19	1, 3, 4, 5, 7	±1/16"
110	Pier 22	23	4, 5, 6	1/16"
189	Pier 20	20	7	1/8"



SHIM PL DETAIL

DESIGNED - GGE
 CHECKED - TLC
 DRAWN - Kyle M. Steffen/balva
 CHECKED - GGE TLC

EXAMINED
 PASSED
 ACTING ENGINEER OF STRUCTURAL SERVICES
 ACTING ENGINEER OF BRIDGES AND STRUCTURES

DATE - OCTOBER 17, 2014

STATE OF ILLINOIS
 DEPARTMENT OF TRANSPORTATION

REPAIR DETAIL 190, 102, 119, 270, 94, 95, 98, 99,
 168, 266, 170, 171, 175, 110, 189
 SN 099-0056

SHEET NO. 9 OF 24 SHEETS

F.A.I. RTE.	SECTION	COUNTY	TOTAL SHEETS	SHEET NO.
80	99-3-BR-2	WILL	57	12

CONTRACT NO. 60Y64
 ILLINOIS FED. AID PROJECT