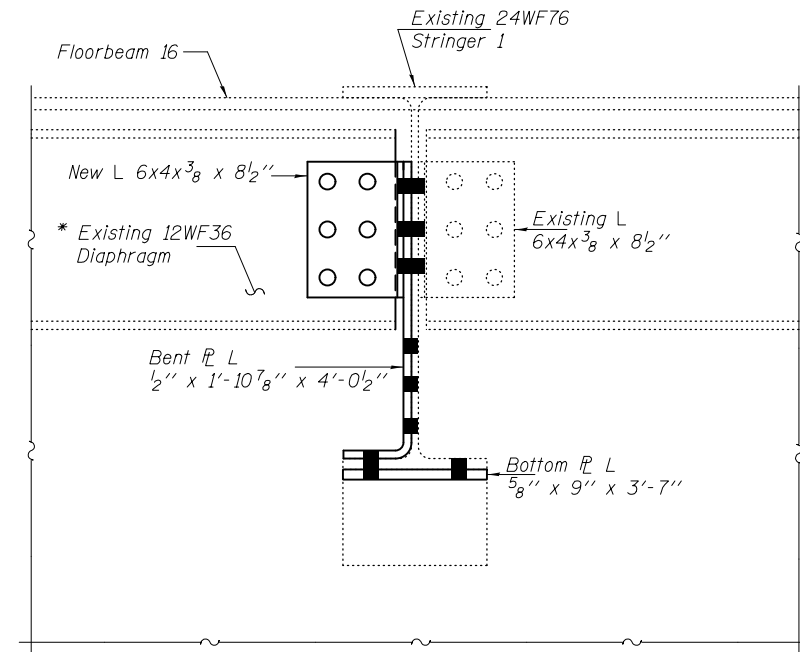


REPAIR 183 ELEVATION
(Looking North)

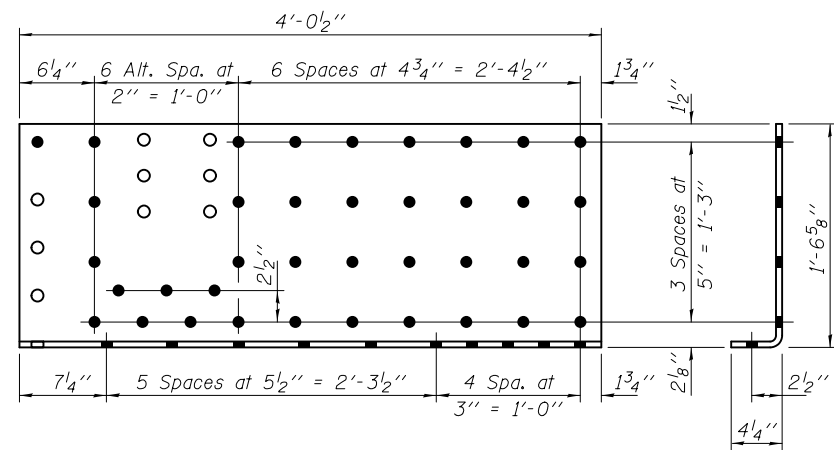


SECTION A-A

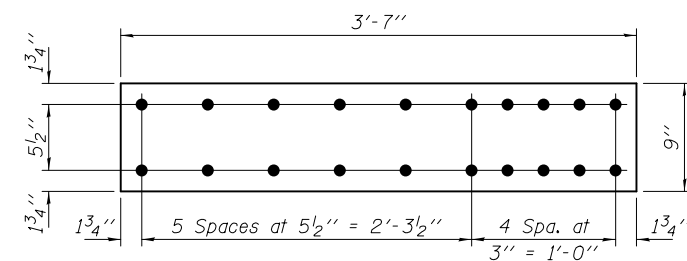
* Trim diaphragm as required to facilitate installation of Bent PL.

BOLT HOLE LEGEND

- - Use holes in new steel as template
- - Use holes in existing steel as template



BENT PLATE L
PL 1/2" x 1'-10 7/8" x 4'-0 1/2" (1-Req'd)



BOTTOM PLATE L
PL 5/8" x 9" x 3'-7" (1-Req'd)

DESIGNED - GGE	EXAMINED
CHECKED - TLC	PASSED
DRAWN - Kyle M. Steffen/balva	
CHECKED - GGE TLC	

 ACTING ENGINEER OF STRUCTURAL SERVICES	DATE - OCTOBER 17, 2014
 ACTING ENGINEER OF BRIDGES AND STRUCTURES	

**STATE OF ILLINOIS
DEPARTMENT OF TRANSPORTATION**

**REPAIR DETAIL 183
SN 099-0056**

SHEET NO. 11 OF 24 SHEETS

F.A.I. RTE.	SECTION	COUNTY	TOTAL SHEETS	SHEET NO.
80	99-3-BR-2	WILL	57	14
CONTRACT NO. 60Y64			ILLINOIS FED. AID PROJECT	