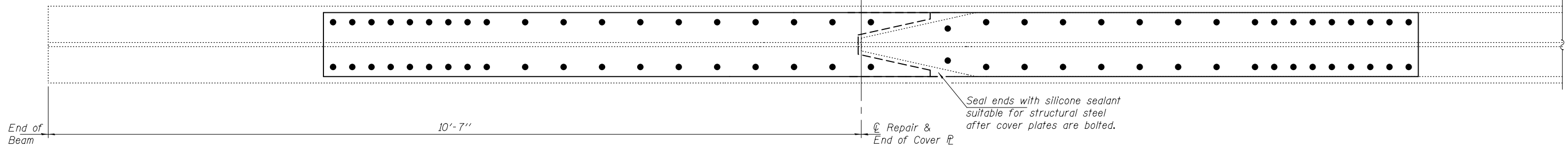
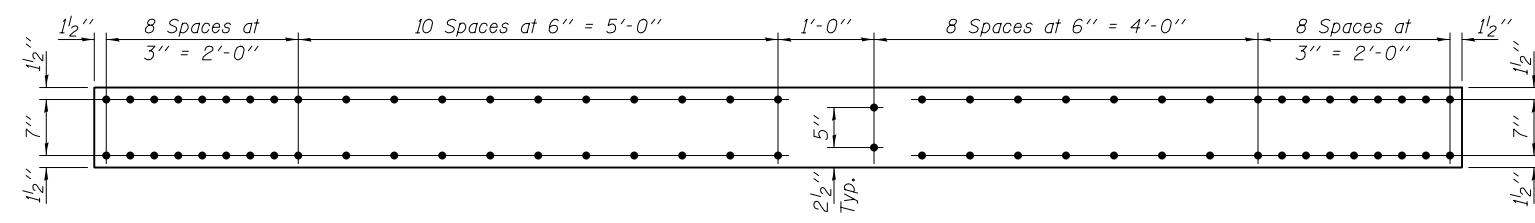


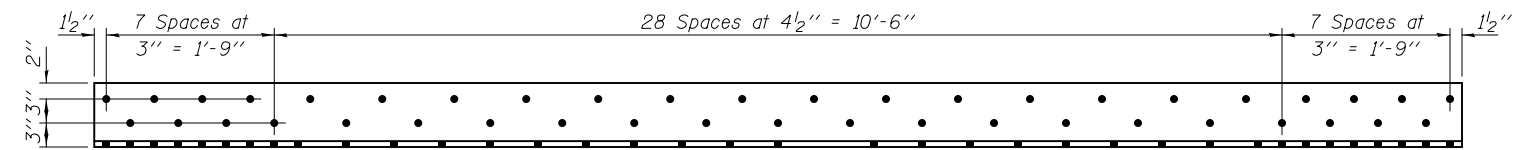
ELEVATION - REPAIR DETAIL 191
(Looking North)



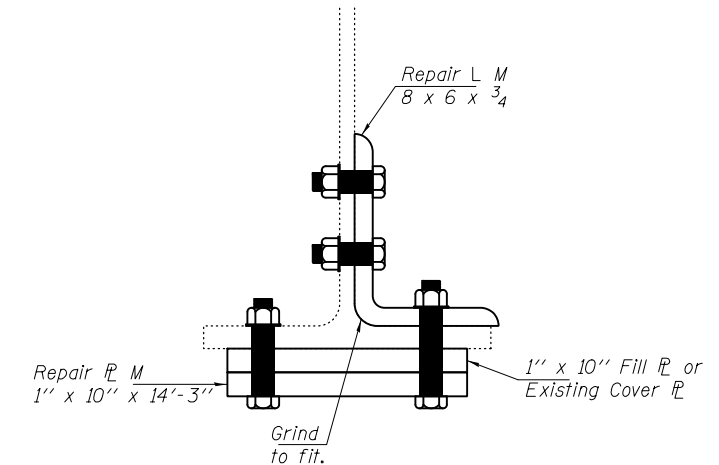
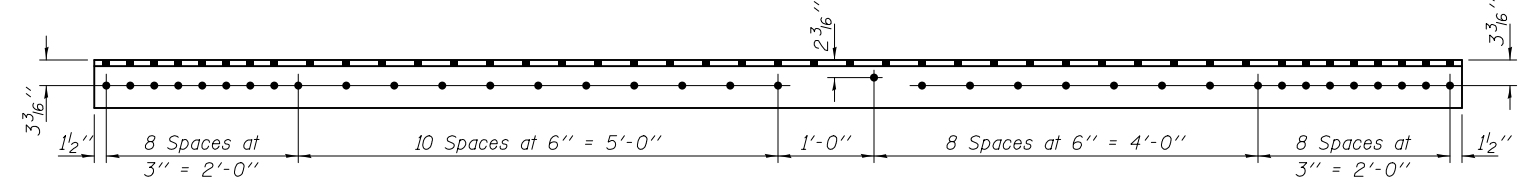
PLAN - REPAIR DETAIL 191
Repair Angles not shown for clarity.



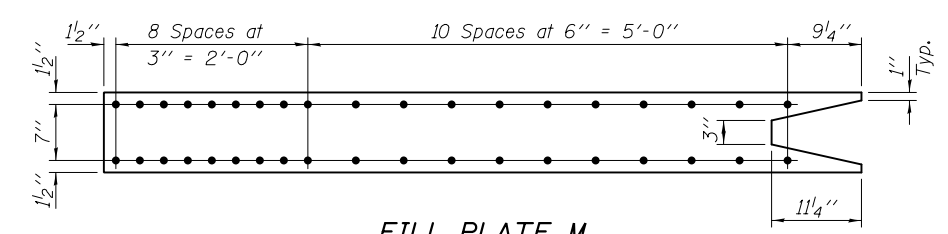
REPAIR PLATE M
P 1" x 10" x 14'-3" (1-Required)



REPAIR ANGLE M
L 8 x 6 x 3/4 x 14'-3" (1-Required)



SECTION B-B



FILL PLATE M
P 1" x 10" x 7'-10 3/4" (1-Required)

DESIGNED - GGE	EXAMINED - <i>Timothy A. Daulton</i> ACTING ENGINEER OF STRUCTURAL SERVICES	DATE - OCTOBER 17, 2014	STATE OF ILLINOIS DEPARTMENT OF TRANSPORTATION	REPAIR DETAIL 191 SN 099-0056	F.A.I. RTE.	SECTION	COUNTY	TOTAL SHEETS	SHEET NO.	
CHECKED - TLC	PASSED - <i>Carl Kasper</i> ACTING ENGINEER OF BRIDGES AND STRUCTURES				80	99-3-BR-2	WILL	57	15	
DRAWN - Kyle M. Steffen/balva					CONTRACT NO. 60Y64					
CHECKED - GGE TLC					ILLINOIS FED. AID PROJECT					
				SHEET NO. 12 OF 24 SHEETS						