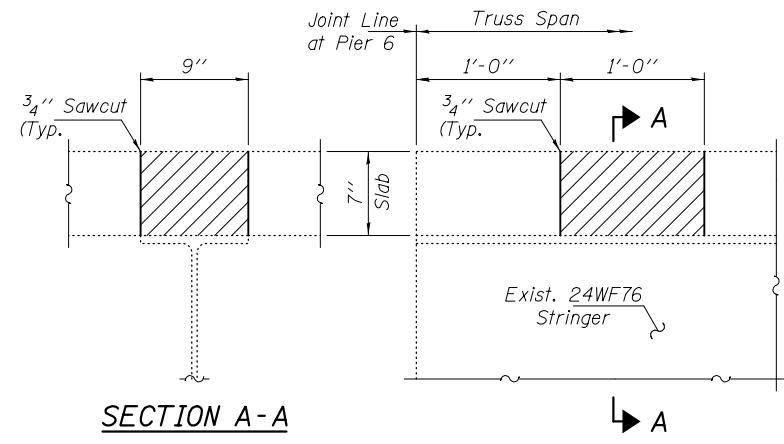
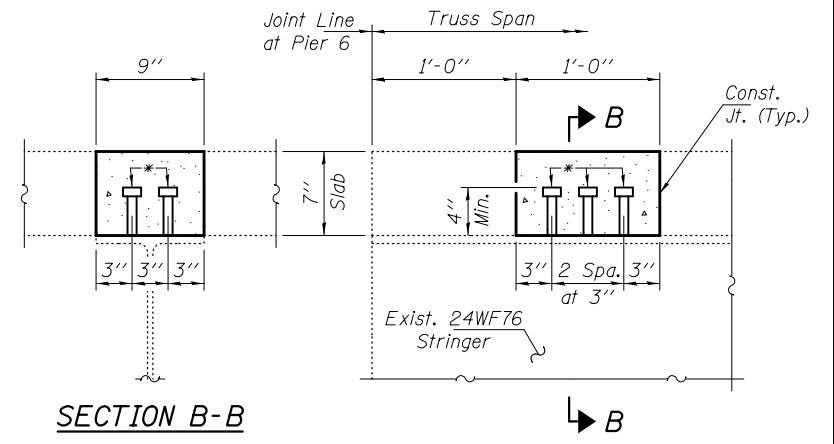


SECTION E-E
REPAIR DETAIL 225
 Span 3, Pier 3 between Girders 6 & 7



SECTION A-A
REPAIR 227 CONCRETE REMOVAL
 Span 7, Stringer 1 & 2, Above Pier 6



SECTION B-B
REPAIR 227 CONCRETE REPLACEMENT
 Span 7, Stringer 1 & 2, Above Pier 6

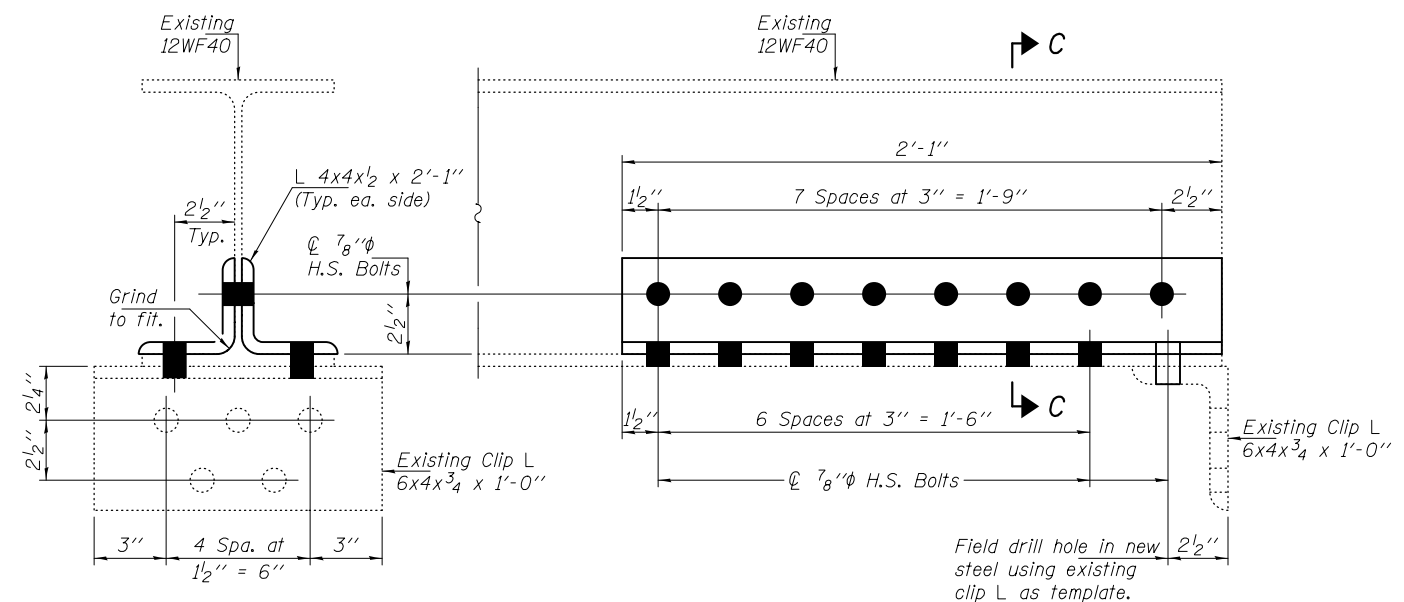
Existing reinforcement bars extending into the removal area shall be cleaned, straightened and incorporated into the new construction. Any reinforcement bars that are damaged during concrete removal shall be replaced with an approved bar splicer or anchorage system. Cost included with Structural Steel Repair.

* 3/4"φ x 4" Granular or solid flux filled headed studs, automatically end welded to flange. (12-Required)

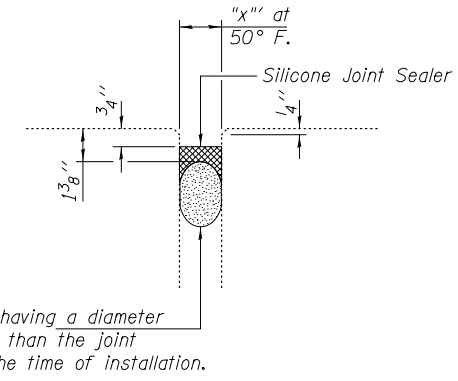
BOLT HOLE LEGEND

- - Use holes in new steel as template
- - Use holes in existing steel as template

Note:
 Hatched areas indicate areas of Concrete Removal. Cost of Concrete and Shear Studs included with Structural Steel Repair.



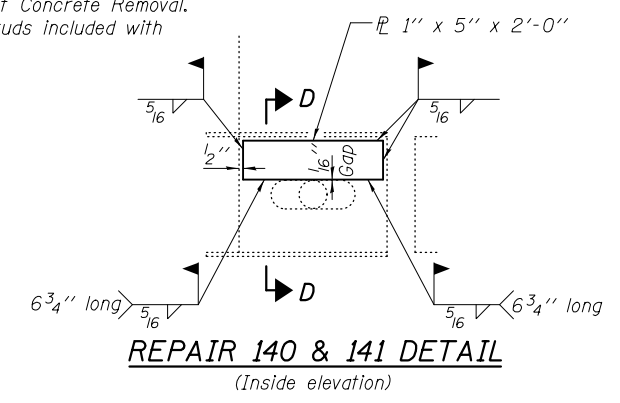
SECTION C-C
REPAIR 226 & 236 DETAIL
 Item 226 - Span 4, Pier 4 between Girders 8 & 9
 Item 236 - Span 20, Pier 19 between Girders 3 & 4



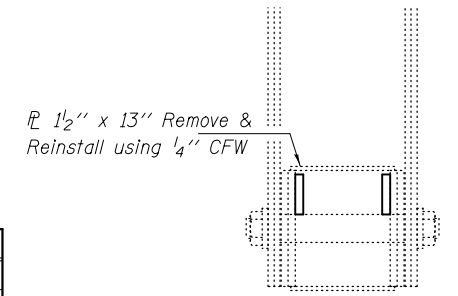
REPAIR 43, 81, 220, 45, 234, 169, 222, 47, 48, 49, 35 & 224 DETAILS
 See Table T for Locations and dimension "x".

TABLE T
SN 099-0056

NBIS #	SPAN	LOCATION	JOINT DEFICIENCY	Dim. "x"
43	7	Panel Point 7	Seal has gaps (full length)	1 3/4"
81	8	Panel Point 13	8' of joint failed	2 3/4"
220	9	Panel Point 30	4' Leaking in N. Lane	2 3/4"
45	11 & 12	Pier 11, N. Curb	5' Leaking	1"
234	12 & 13	Pier 12, btwn. girder 1 & 3	10' of jt. failed (N. Lane)	2 3/4"
169	14	Pier 14	15' of joint failed	2 3/4"
222	16 & 17	Pier 16, N. End	15' of joint failed	2 3/4"
47	17 & 18	Pier 17	20' Leaking	1"
48	18 & 19	Pier 18	2' of joint failed	2"
49	20 & 21	Pier 20	2' Leaking, Lanes 1 & 2	2"
35	22 & 23	Pier 22	3' of jt. failed (Lane 1)	2"
224	23 & 24	Pier 23, N. End	Joint failed, full length	2 3/4"



REPAIR 140 & 141 DETAIL
 (Inside elevation)



SECTION D-D

DESIGNED - GGE
 CHECKED - TLC
 DRAWN - Kyle M. Steffen/balva
 CHECKED - GGE TLC

EXAMINED - *Timothy A. Daulton*
 ACTING ENGINEER OF STRUCTURAL SERVICES

PASSED - *Carl Pinner*
 ACTING ENGINEER OF BRIDGES AND STRUCTURES

DATE - OCTOBER 17, 2014

STATE OF ILLINOIS
DEPARTMENT OF TRANSPORTATION

REPAIR DETAILS 225, 226, 236, 140, 141, 43, 81, 220, 45, 234, 169, 222, 47, 48, 49, 35, 224, 227
SN 099-0056
 SHEET NO. 13 OF 24 SHEETS

F.A.I. RTE. 80
 SECTION 99-3-BR-2
 COUNTY WILL
 TOTAL SHEETS 57
 SHEET NO. 16
 CONTRACT NO. 60Y64
 ILLINOIS FED. AID PROJECT