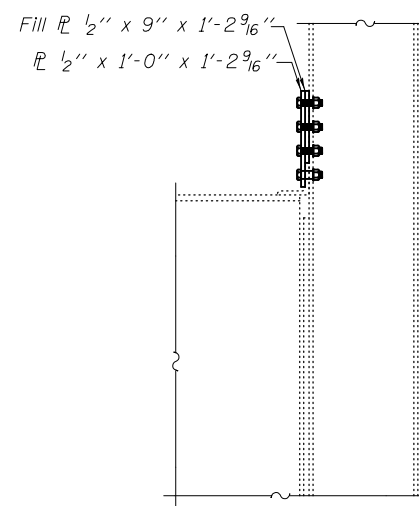
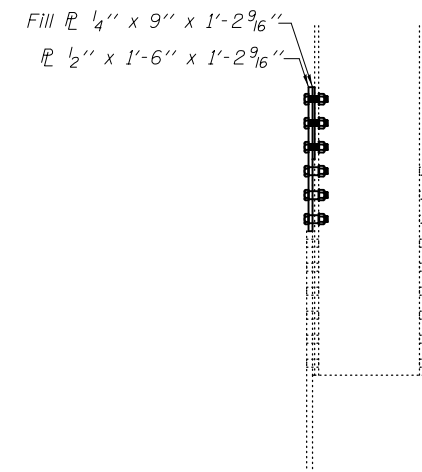


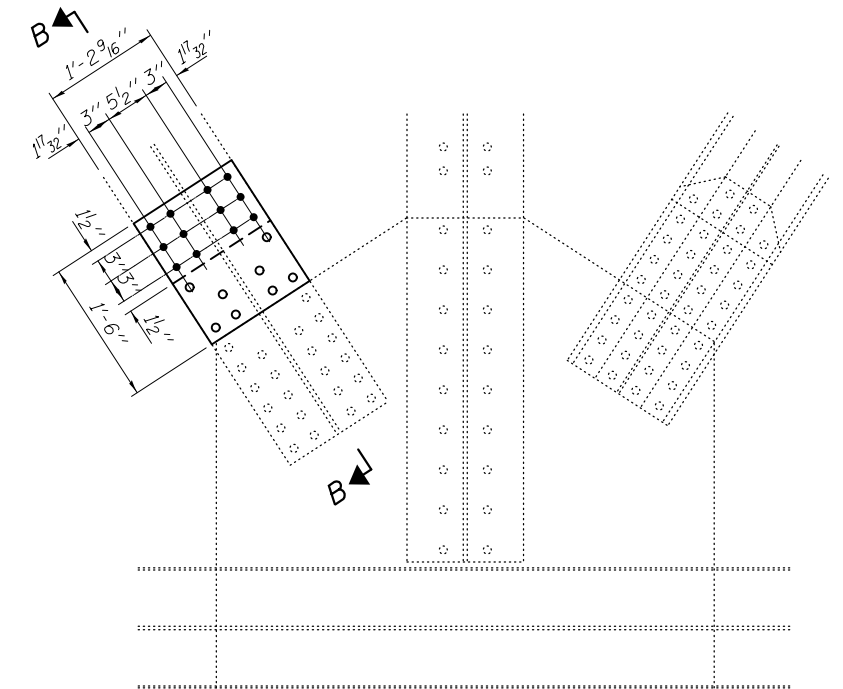
REPAIR 249 ELEVATION



SECTION A-A



SECTION B-B



REPAIR 252 ELEVATION

BOLT HOLE LEGEND

- - Use holes in new steel as template
- - Use holes in existing steel as template

| | | |
|-------------------------------|---|-------------------------|
| DESIGNED - GGE | EXAMINED | DATE - OCTOBER 17, 2014 |
| CHECKED - TLC | <i>Timothy A. Daulton</i> ACTING ENGINEER OF STRUCTURAL SERVICES | |
| DRAWN - Kyle M. Steffen/balva | PASSED | |
| CHECKED - GGE TLC | <i>Carl Kroyer</i> ACTING ENGINEER OF BRIDGES AND STRUCTURES | |

**STATE OF ILLINOIS
DEPARTMENT OF TRANSPORTATION**

**REPAIR 249 & 252 DETAILS
SN 099-0056**

SHEET NO. 14 OF 24 SHEETS

| F.A.I. RTE. | SECTION | COUNTY | TOTAL SHEETS | SHEET NO. |
|---------------------------|-----------|--------|--------------|--------------------|
| 80 | 99-3-BR-2 | WILL | 57 | 17 |
| | | | | CONTRACT NO. 60Y64 |
| ILLINOIS FED. AID PROJECT | | | | |