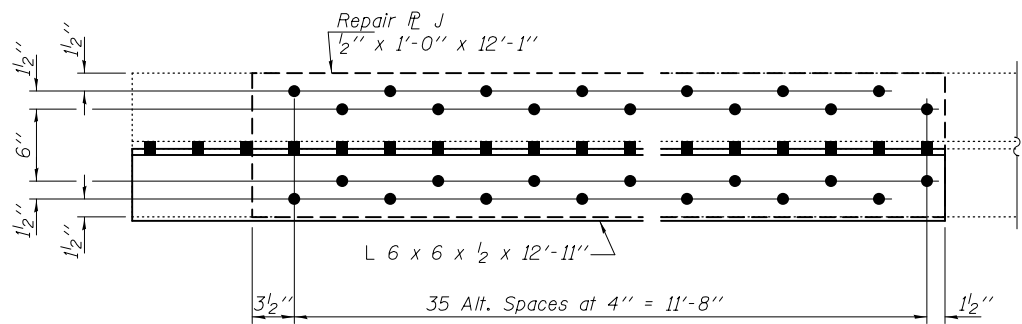
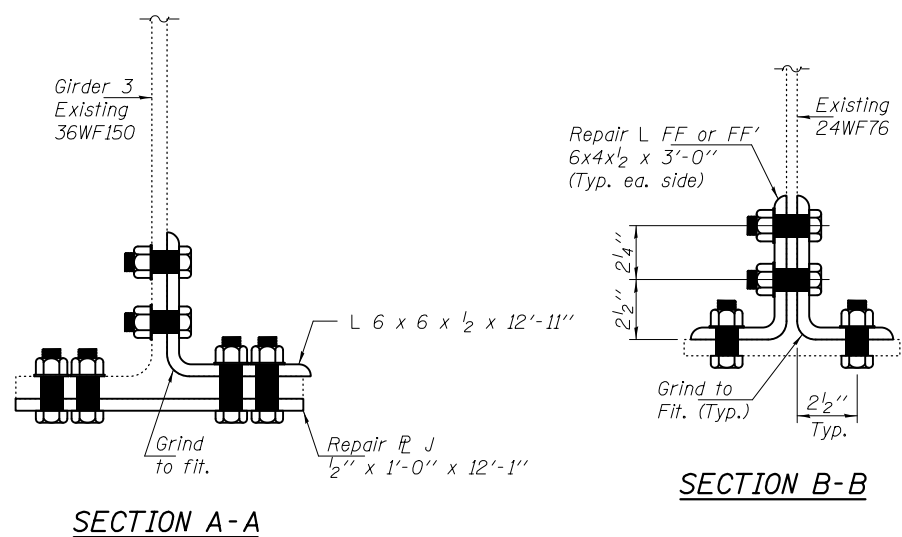


REPAIR 123 ELEVATION
(Looking North)

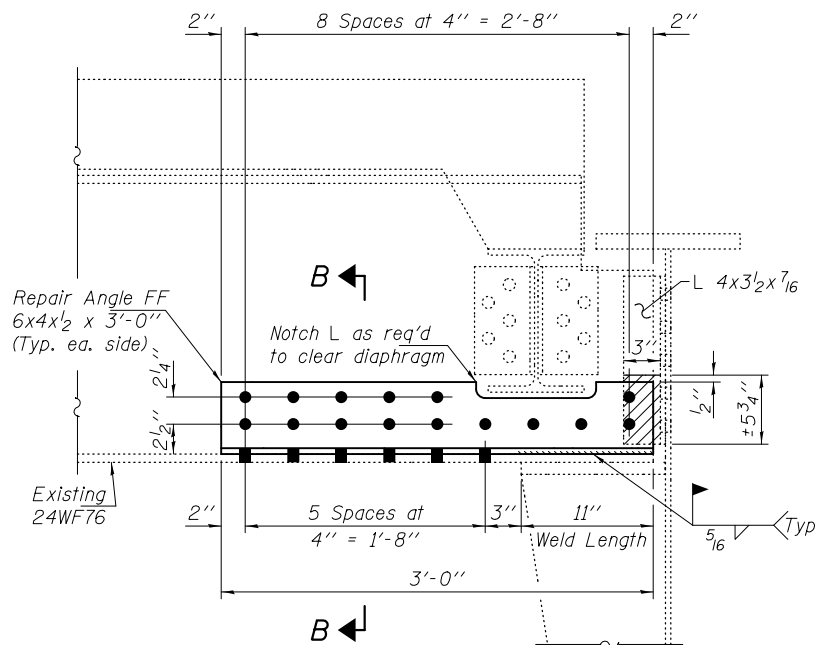


REPAIR 123 PLAN



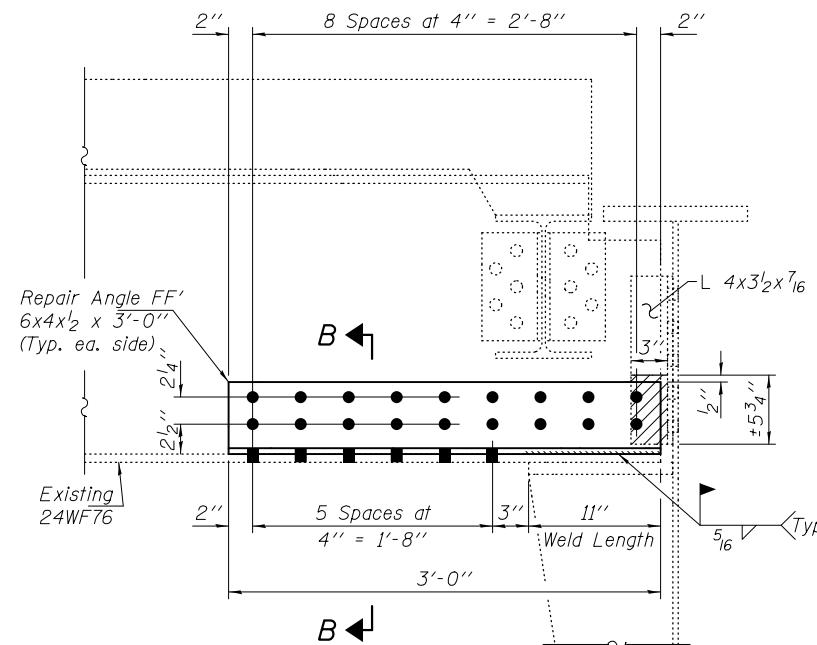
SECTION A-A

SECTION B-B

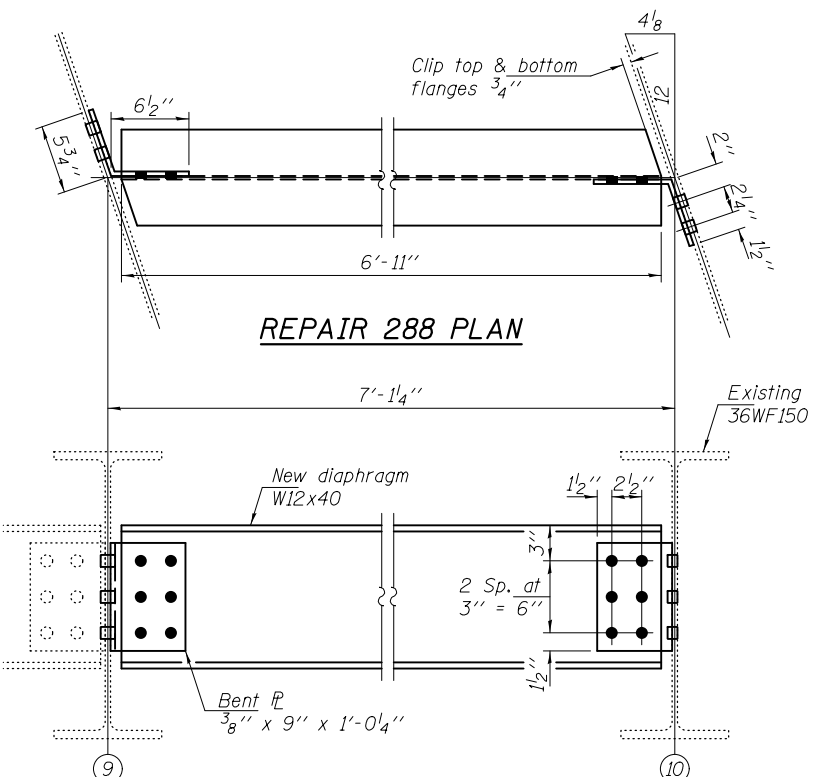


REPAIR 303 & 304 DETAIL
at Span 8, Floor Beam 23, Stringers 2 & 5

Notes:
Hatched area indicates partial removal of angle only. Cost included with Structural Steel Repair.
Contractor shall ensure that no damage shall be done to the Floor Beam web or stringer.



REPAIR 305 DETAIL
at Span 8, Floor Beam 23, Stringer 6



REPAIR 288 PLAN

REPAIR 288 ELEVATION
(All dimensions are typical)

BOLT HOLE LEGEND

- - Use holes in new steel as template
- - Use holes in existing steel as template

DESIGNED - GGE	EXAMINED - <i>Timothy A. Daulton</i> ACTING ENGINEER OF STRUCTURAL SERVICES	DATE - OCTOBER 17, 2014
CHECKED - TLC	PASSED - <i>Carl Berger</i> ACTING ENGINEER OF BRIDGES AND STRUCTURES	
DRAWN - Kyle M. Steffen/balva		
CHECKED - GGE TLC		

STATE OF ILLINOIS
DEPARTMENT OF TRANSPORTATION

REPAIR DETAIL 123, 288, & 303 THRU 305
SN 099-0057

SHEET NO. 19 OF 24 SHEETS

F.A.I. RTE. 80	SECTION 99-3-BR-2	COUNTY WILL	TOTAL SHEETS 57	SHEET NO. 22
CONTRACT NO. 60Y64			ILLINOIS FED. AID PROJECT	