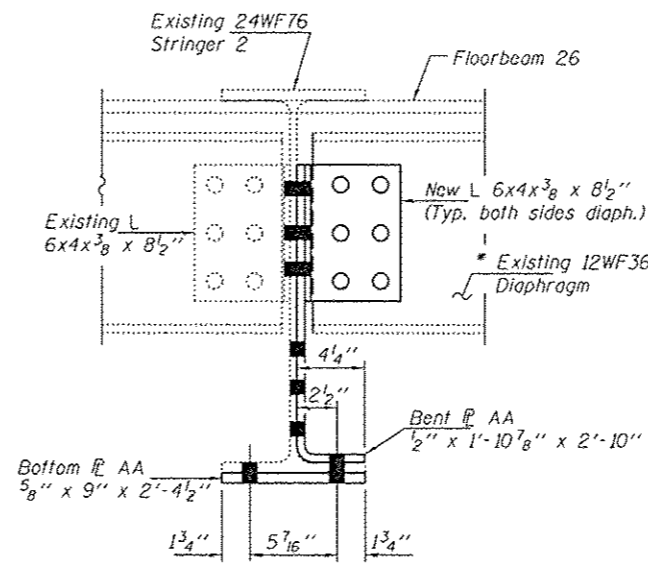
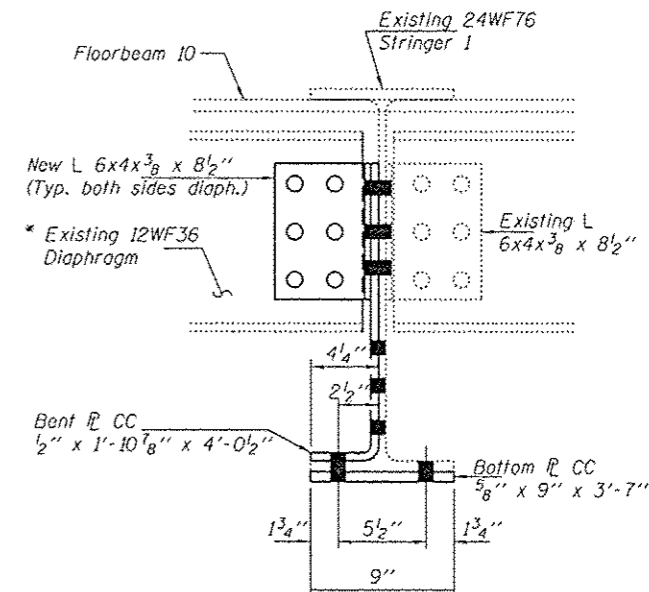


REPAIR DETAIL 106



SECTION F-F

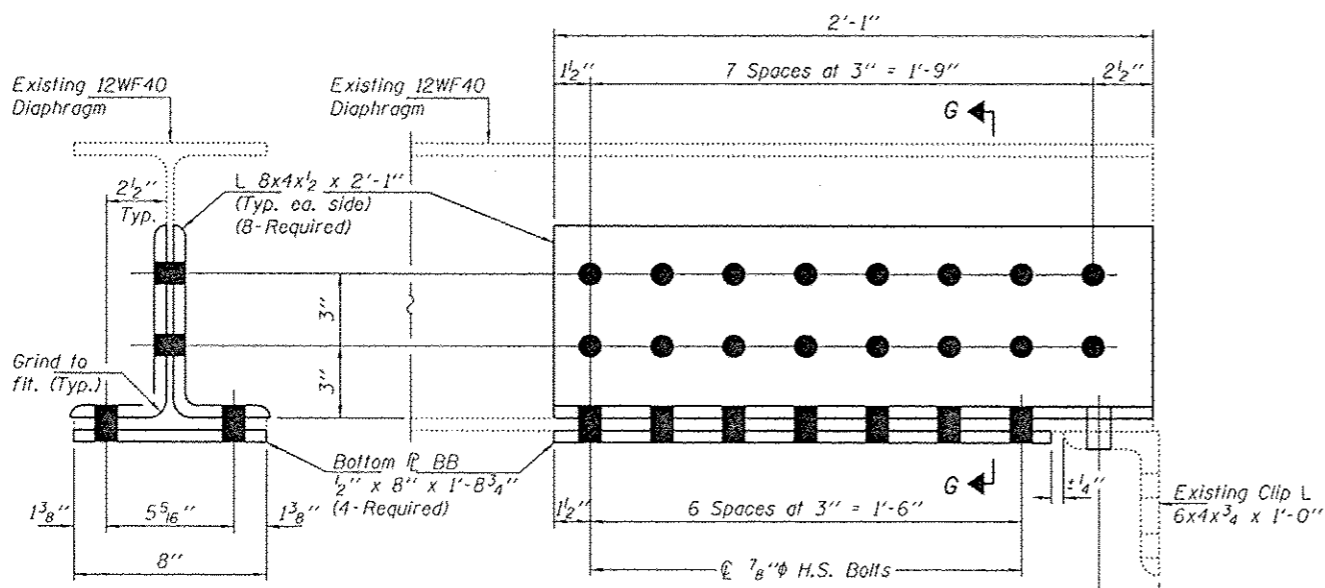


SECTION H-H

* Trim diaphragm as required to facilitate installation of Bent R.

BOLT HOLE LEGEND

- - Use holes in new steel as template
- - Use holes in existing steel as template

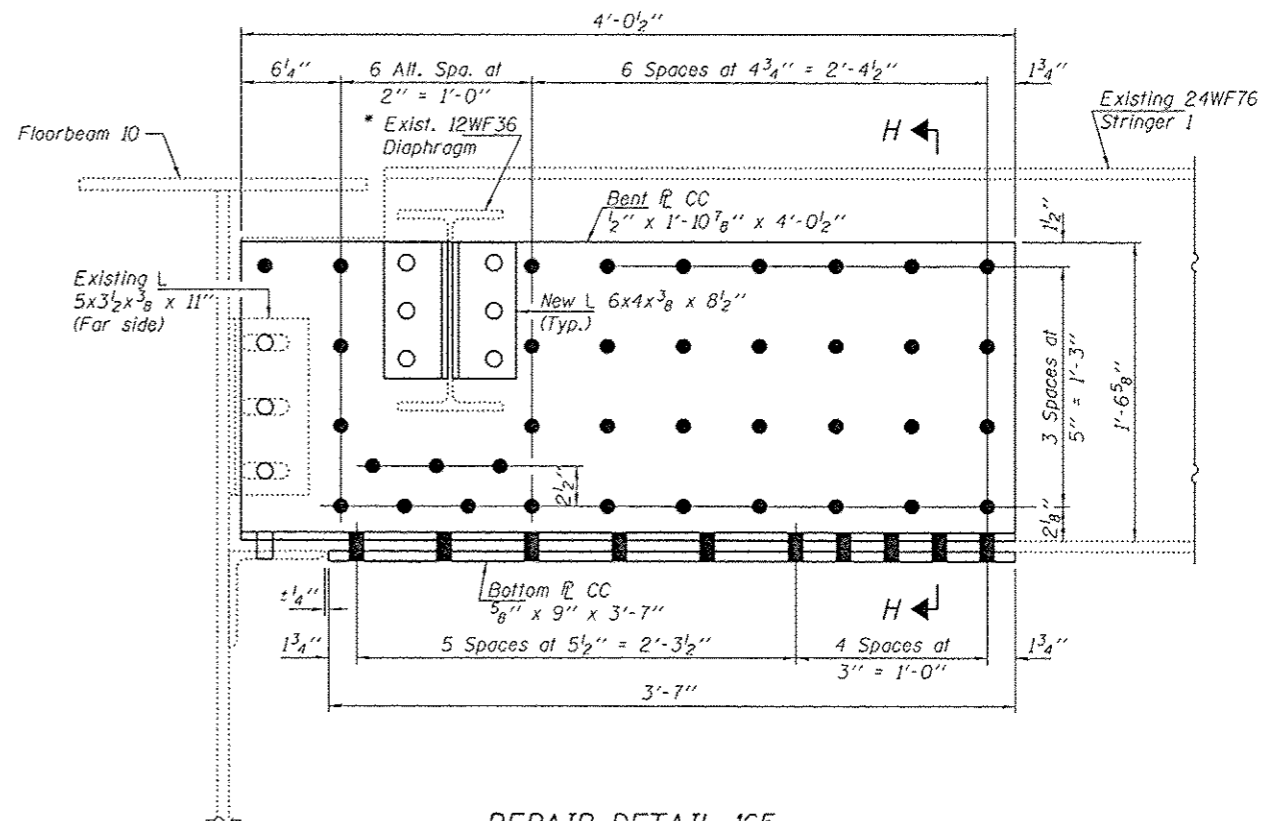


SECTION G-G

REPAIR DETAIL 79, 210 THRU 213, 321 & 332

Repair both ends of diaphragm for Item 212.

Field drill hole in new steel using existing clip L as template.



REPAIR DETAIL 165

DESIGNED - GGE	EXAMINED - <i>Imag A. A. A.</i>
CHECKED - TLC	ACTING ENGINEER OF STRUCTURAL SERVICES
DRAWN - Kyle M. Steffen/balva	PASSED - <i>A. Carl King</i>
CHECKED - GGE	ACTING ENGINEER OF BRIDGES AND STRUCTURES

DATE - OCTOBER 17, 2014

STATE OF ILLINOIS
DEPARTMENT OF TRANSPORTATION

REPAIR DETAILS 79, 106, 165, 210 THRU 213, 321 & 332
SN 099-0057

SHEET NO. 23 OF 24 SHEETS

E.A.I. RTE. 80	SECTION 99-3-BR-2	COUNTY WILL	TOTAL SHEETS 57	SHEET NO. 23C
				CONTRACT NO. 60Y64
ILLINOIS FED. AID PROJECT				