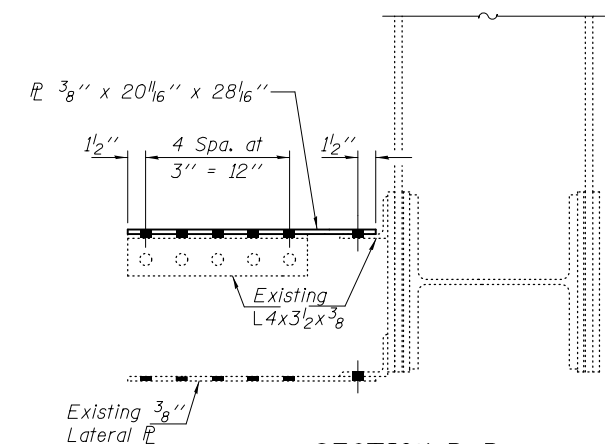
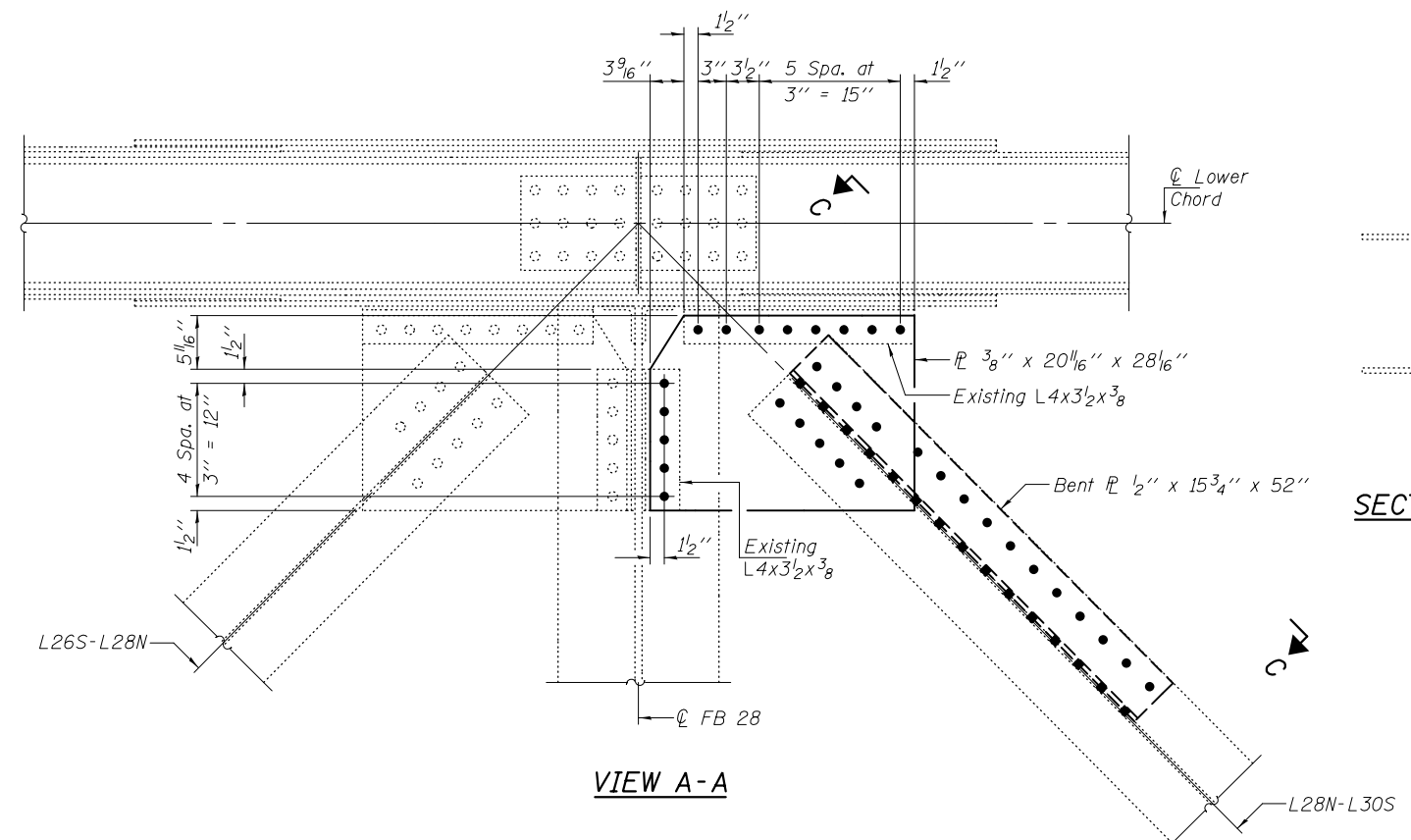


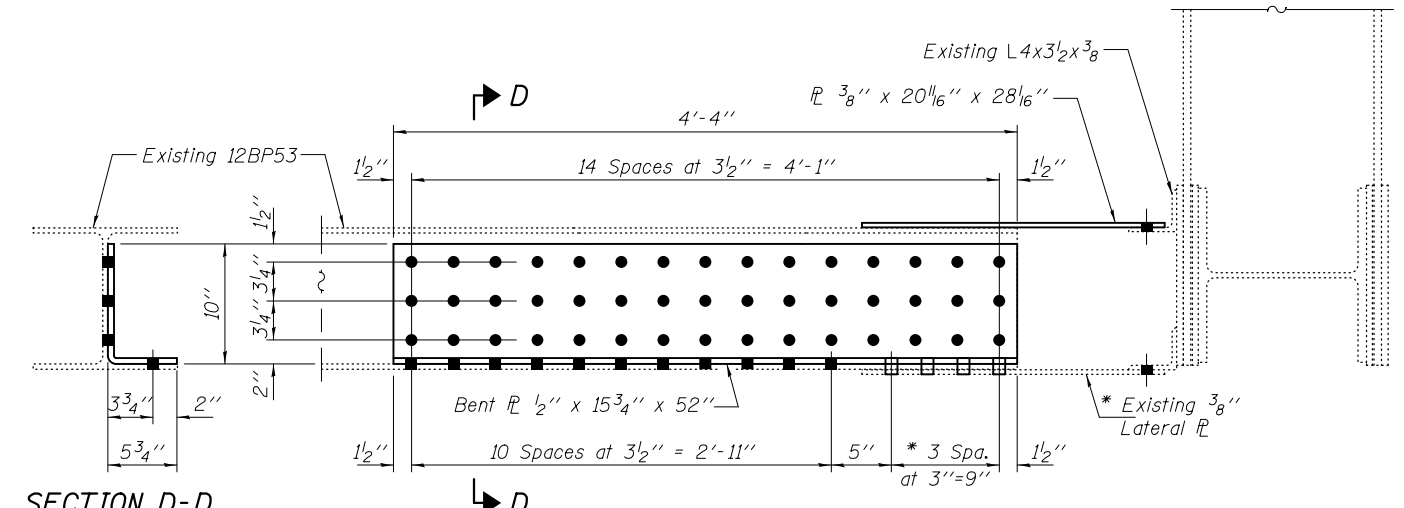
REPAIR 197 DETAIL
(Looking North)



SECTION B-B
(Floor Beam 28 not shown for clarity.)



VIEW A-A



SECTION D-D

VIEW C-C

* Field drill holes in new Bent PL using existing lateral PL as template.

DESIGNED - GGE	EXAMINED - <i>Timothy A. Daulton</i> ACTING ENGINEER OF STRUCTURAL SERVICES	DATE - OCTOBER 17, 2014	STATE OF ILLINOIS DEPARTMENT OF TRANSPORTATION	REPAIR DETAIL 197 SN 099-0057	F.A.I. RTE.	SECTION	COUNTY	TOTAL SHEETS	SHEET NO.	
CHECKED - TLC	PASSED - <i>Carl Meyer</i> ACTING ENGINEER OF BRIDGES AND STRUCTURES				80	99-3-BR-2	WILL	57	23	
DRAWN - Kyle M. Steffen/balva					CONTRACT NO. 60Y64					
CHECKED - GGE TLC					ILLINOIS FED. AID PROJECT					
				SHEET NO. 20 OF 24 SHEETS						