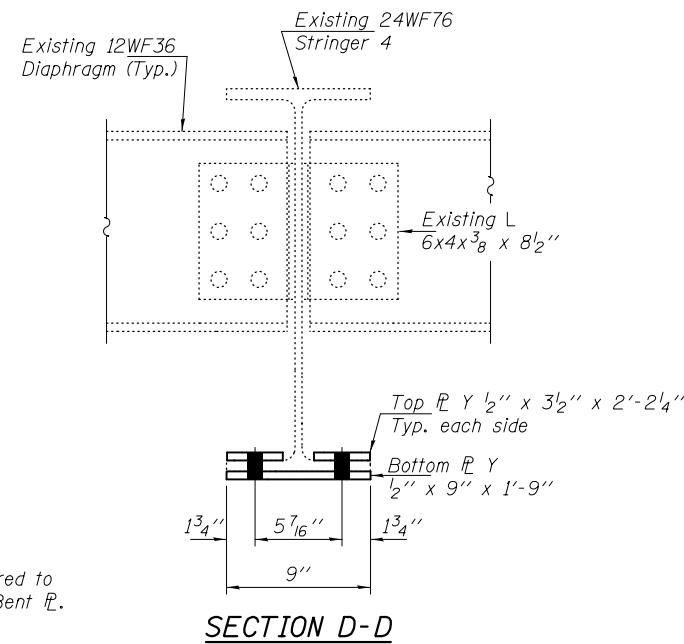


**REPAIR DETAIL 181**

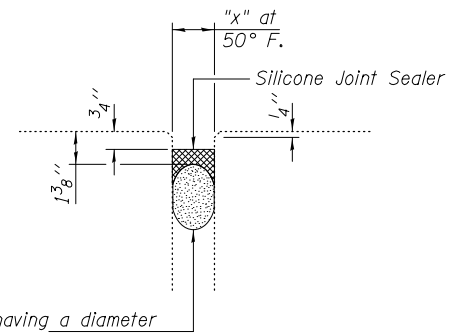
\* Trim diaphragm as required to facilitate installation of Bent P.

**BOLT HOLE LEGEND**

- - Use holes in new steel as template
- - Use holes in existing steel as template



**SECTION D-D**



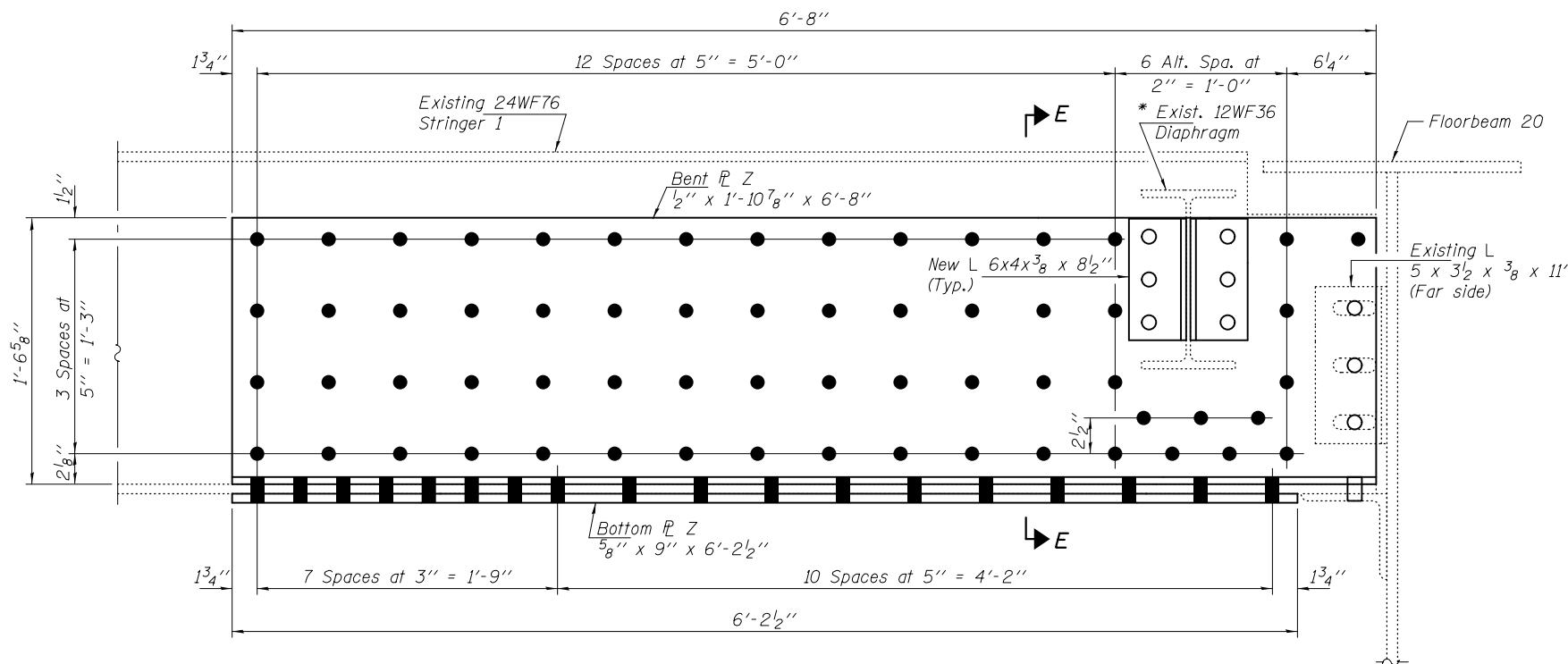
Backer Rod having a diameter 25% greater than the joint opening at the time of installation.

**REPAIR 37, 38, 45, 48, 50, 52, 320, 266, 57, 60, 61 & 336 DETAILS**

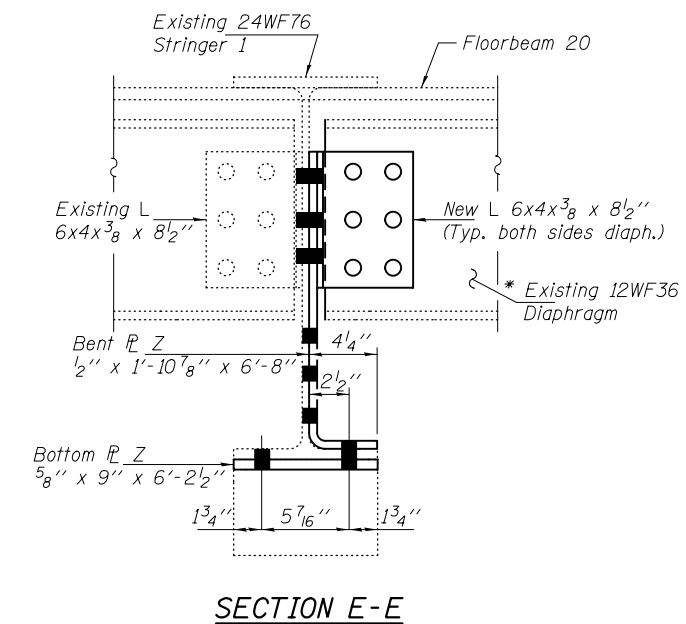
See Table TT for Locations and dimension "x".

**TABLE TT - SN 099-0057**

NBIS #	SPAN	LOCATION	JOINT DEFICIENCY	Dim. "x"
37	1	W. Abut.	20' Leaking	2"
38	4 & 5	Pier 4	15' Leaking	1"
45	8	Panel Point 13	28' of joint failed	2 3/4"
48	8	Panel Point 16	4' of joint failed	1 3/4"
50	8	Panel Point 20	4' of joint failed	1 3/4"
52	8 & 9	Pier 8	4' of joint failed	2 3/4"
320	12 & 13	Pier 12	8' of joint failed	2 3/4"
266	14 & 15	Pier 14	20' of joint failed	2 3/4"
57	18 & 19	Pier 18	Leaking full length	2"
60	21 & 22	Pier 21	6' Leaking	1"
61	22 & 23	Pier 22	8' Leaking	2"
336	24 & 25	Pier 24	Joint failed	2 3/4"



**REPAIR DETAIL 227**



**SECTION E-E**

DESIGNED - GGE  
 CHECKED - TLC  
 DRAWN - Kyle M. Steffen/balva  
 CHECKED - GGE TLC

EXAMINED  
 PASSED  
 ACTING ENGINEER OF BRIDGES AND STRUCTURES

DATE - OCTOBER 17, 2014

**STATE OF ILLINOIS  
 DEPARTMENT OF TRANSPORTATION**

**REPAIR DETAILS 181, 227, 37, 38, 45,  
 48, 50, 52, 320, 266, 57, 60, 61 & 336  
 SN 099-0057**

SHEET NO. 22 OF 24 SHEETS

F.A.I. RTE.	SECTION	COUNTY	TOTAL SHEETS	SHEET NO.
80	99-3-BR-2	WILL	57	23B
CONTRACT NO. 60Y64			ILLINOIS FED. AID PROJECT	