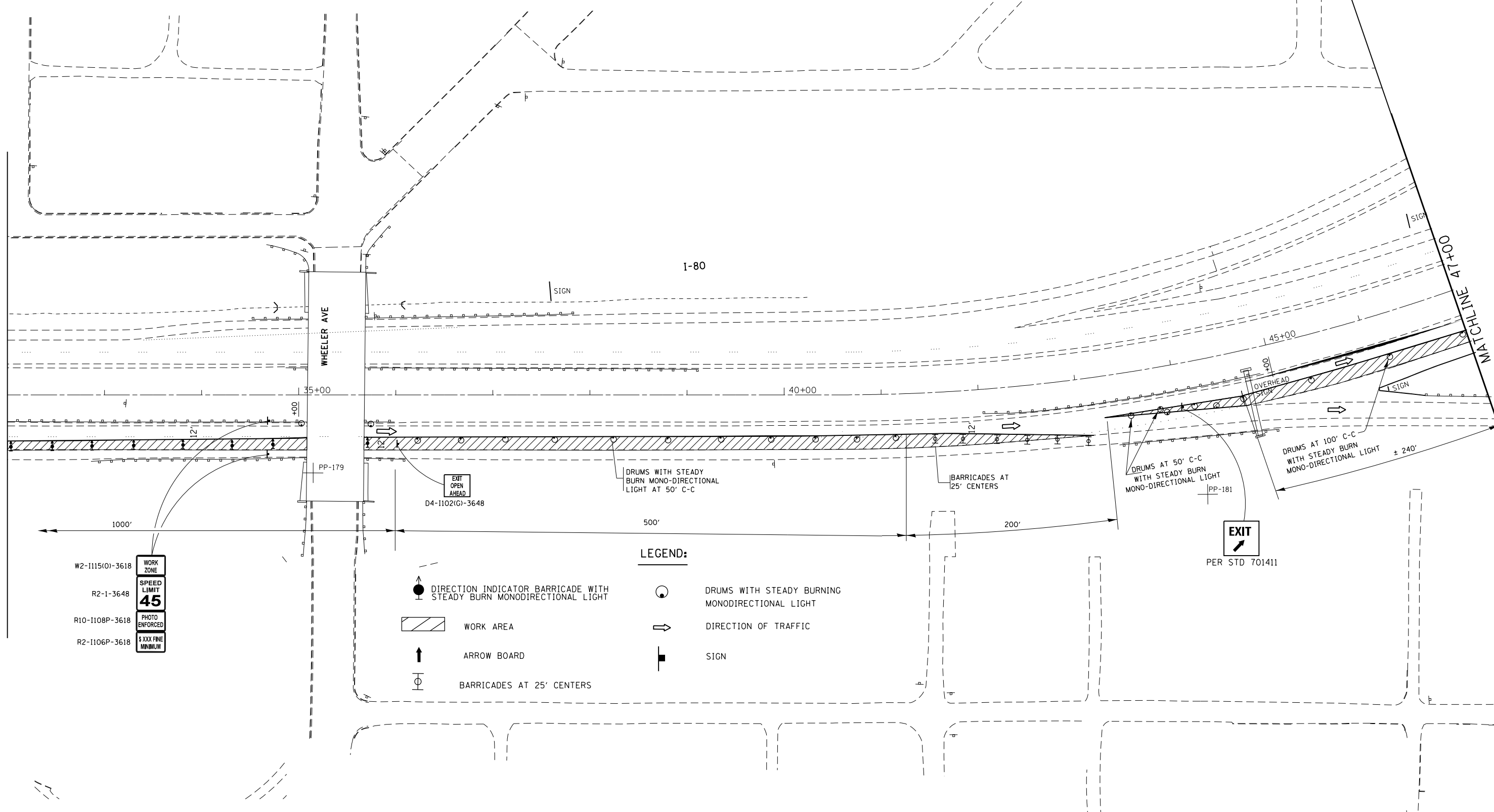


MATCHLINE 32+00



- W2-1115(O)-3618 WORK ZONE
- R2-1-3648 SPEED LIMIT 45
- R10-1108P-3618 PHOTO ENFORCED
- R2-1106P-3618 \$XXX FINE MINIMUM

LEGEND:

- DIRECTION INDICATOR BARRICADE WITH STEADY BURN MONODIRECTIONAL LIGHT
- WORK AREA
- ARROW BOARD
- BARRICADES AT 25' CENTERS
- DRUMS WITH STEADY BURNING MONODIRECTIONAL LIGHT
- DIRECTION OF TRAFFIC
- SIGN

| | | | |
|--|------------------------------|------------|-----------|
| FILE NAME = | USER NAME = Gorengautab | DESIGNED - | REVISED - |
| et:\pw\work\pwidot\gorengautab\d0404850\0144514-sh1-stage1.dgn | | DRAWN - | REVISED - |
| Default | PLOT SCALE = 100.0000' / in. | CHECKED - | REVISED - |
| | PLOT DATE = 9/9/2014 | DATE - | REVISED - |

**STATE OF ILLINOIS
DEPARTMENT OF TRANSPORTATION**

**I-80 OVER DESPLAINES RIVER
TEMPORARY TRAFFIC CONTROL PLAN WITH LANE 2 & 3 CLOSED**

SCALE: 1"=50' SHEET OF SHEETS STA. 32+00 TO STA. 47+00

| F.A.I. RTE. | SECTION | COUNTY | TOTAL SHEETS | SHEET NO. |
|---------------------------|-----------|--------|--------------|-----------|
| 80 | 99-3-BR-2 | WILL | 57 | 36 |
| CONTRACT NO. 60Y64 | | | | |
| ILLINOIS FED. AID PROJECT | | | | |