

EXISTING LEGEND

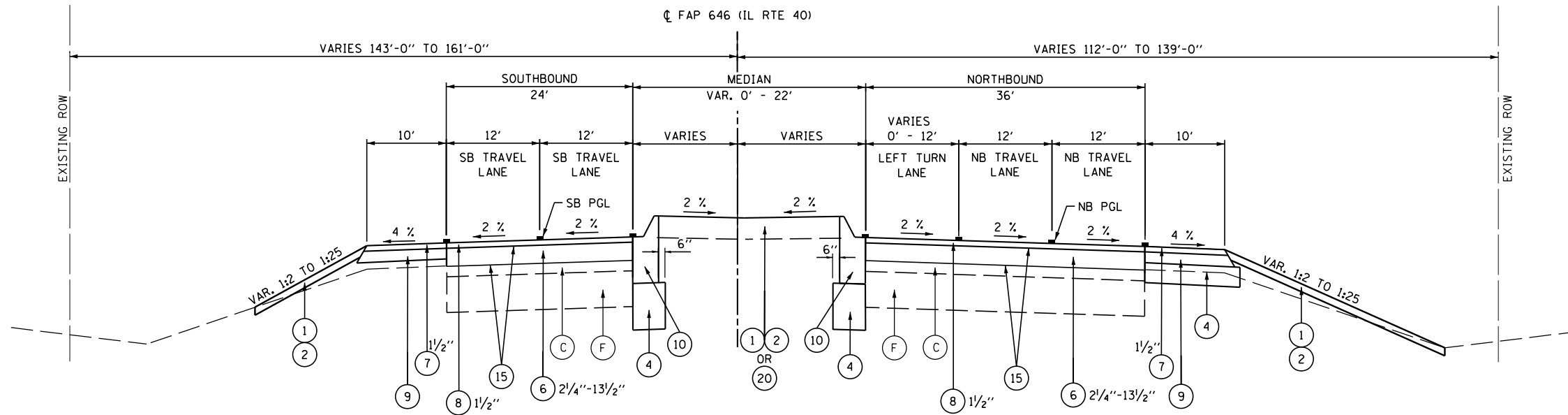
- (A) EXISTING GUARDRAIL
- (B) EXISTING HMA SHOULDER
- (C) EXISTING HMA SURFACE COURSE
- (D) EXISTING CURB AND GUTTER
- (E) EXISTING CONCRETE MEDIAN
- (F) EXISTING PCC PAVEMENT
- (G) EXISTING GROUND
- (H) EXISTING PAVEMENT MARKING
- (I) TIE BARS
- (X) REMOVAL ITEMS

PROPOSED LEGEND

- (1) TOPSOIL FURNISH AND PLACE, 4"
- (2) SEEDING, CLASS 2A
- (3) MIXTURE FOR CRACKS, JOINTS, AND FLANGEWAYS
- (4) AGGREGATE SUBGRADE IMPROVEMENT, 12"
- (5) LEVELING BINDER (MACHINE METHOD), N70 (112 LBS/SY-IN)
- (6) HOT-MIX ASPHALT BINDER COURSE, IL-19.0, N70 (112 LBS/SY-IN)
- (7) HOT-MIX ASPHALT SURFACE COURSE, MIX "C", N50 (112 LBS/SY-IN)
- (8) HOT-MIX ASPHALT SURFACE COURSE, MIX "D", N70 (112 LBS/SY-IN)
- (9) HOT-MIX ASPHALT SHOULDERS, 6 1/2"
- (10) COMBINATION CONCRETE CURB AND GUTTER, TYPE M-6.24
- (11) CONCRETE MEDIAN SURFACE, 4 INCH
- (12) TRAFFIC BARRIER TERMINAL, TYPE 1 (SPECIAL), 2, 5, OR 6
- (13) SAW CUTS (INCIDENTAL TO C&G REMOVAL)
- (14) TIE BARS
- (15) BITUMINOUS MATERIALS (PRIME COAT)
- (16) PAVEMENT BREAKING
- (17) AGGREGATE SUBGRADE IMPROVEMENT
- (18) PAVEMENT REMOVAL
- (19) STRIP REFLECTIVE CRACK CONTROL TREATMENT
- (20) CONCRETE MEDIAN, TYPE SM-6.24

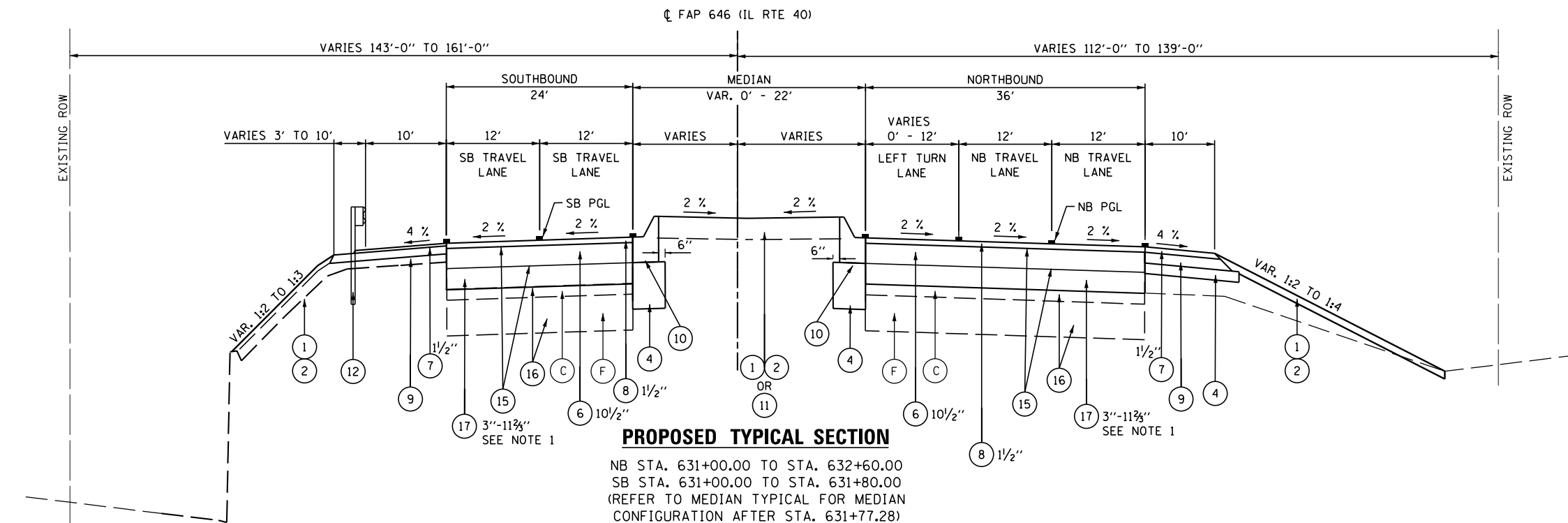
NOTES:

1. THE TOP 3" OF THE AGGREGATE SUBGRADE IMPROVEMENT ON TOP OF PAVEMENT BREAKING SHALL BE CA 6 OR CA 10, TO BE INCLUDED IN THE COST OF AGGREGATE SUBGRADE IMPROVEMENT.



PROPOSED TYPICAL SECTION

NB AND SB STA. 629+30.00 TO STA. 631+00.00 *
 NB AND SB STA. 634+65.00 TO STA. 636+45.00 **



PROPOSED TYPICAL SECTION

NB STA. 631+00.00 TO STA. 632+60.00
 SB STA. 631+00.00 TO STA. 631+80.00
 (REFER TO MEDIAN TYPICAL FOR MEDIAN CONFIGURATION AFTER STA. 631+77.28)

FILE NAME = s:\p1\6380--6395\6346\025\micro\Sh\0264C17-sht-typical.dgn



1170 SOUTH HOUBOLT ROAD
 JOLIET, ILLINOIS 60431
 (815) 744-4200
 USER NAME = brianf
 PLOT SCALE = 100.0000' / in.
 PLOT DATE = 8/14/2014

DESIGNED - VLF
 DRAWN - DJW
 CHECKED - MAG
 DATE - 8-14-14

REVISED -
 REVISED -
 REVISED -
 REVISED -

STATE OF ILLINOIS
 DEPARTMENT OF TRANSPORTATION

TYPICAL SECTIONS

SCALE: NTS SHEET 4 OF 5 SHEETS STA. TO STA.

F.A.P. RTE.	SECTION	COUNTY	TOTAL SHEETS	SHEET NO.
646	101 BR-3	WHITESIDE	130	17
CONTRACT NO. 64C17			FED. ROAD DIST. NO. 2 ILLINOIS FED. AID PROJECT	